

**STAKING CONTROL LABELING LEGEND**

- BC-COR= Back of Curb @ Corner
- BC-RP= Back of Curb @ Radius Point
- CP= Center Point of Radius
- CTR-DR=Center of Drive
- SW-COR= Corner of Sidewalk
- CTR-RMP= Center of Boat Ramp
- COR= Corner
- RMP-SD= Side of Boat Ramp

**SOUTHLAKES FISHING LAKE STAKING CONTROL POINTS**

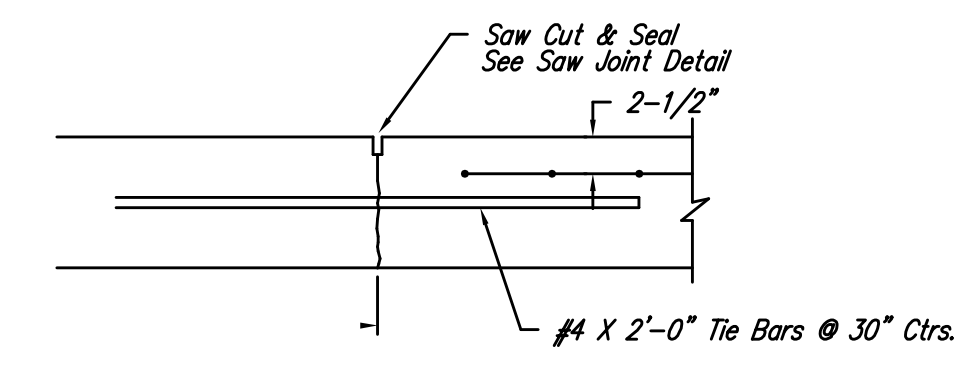
Number	Northing	Easting	Elevation	Raw Desc	Full Desc
2000	19911.84	20087.82	0	CP	CP
2001	119881.84	20088.04	84.23	RP	RP
2002	119911.37	20117.82	84.83	BC-RP	BC-RP
2003	19937.47	20117.82	83.74	BC-RP	BC-RP
2004	19952.33	20103.16	82.78	BC-RP	BC-RP
2005	19952.33	20039.82	83.39	BC-COR	BC-COR
2006	19977.33	20039.82	83.15	BC-COR	BC-COR
2007	19981.83	20044.32	0	CP	CP
2008	19981.83	20048.82	83.03	BC-RP	BC-RP
2009	19995.33	20048.82	82.9	BC-COR	BC-COR
2010	20000.33	20048.82	82.9	SW-COR	SW-COR
2011	20000.33	20070.32	82.69	SW	SW
2012	19995.33	20130.3	81.59	SW	SW
2013	20000.33	20200.32	83	SW	SW
2014	20000.33	20211.82	83.15	SW-COR	SW-COR
2015	19981.83	20211.82	83.28	BC-RP	BC-RP
2016	19981.83	20216.32	0	CP	CP
2017	19977.33	20216.32	0	BC-RP	BC-RP
2018	19977.33	20220.82	83.4	BC-COR	BC-COR
2019	19952.33	20220.82	83.64	BC-COR	BC-COR
2020	19952.33	20157.33	82.83	BC-RP	BC-RP
2021	19937.83	20157.31	0	CP	CP
2022	19938.11	20142.82	83.79	BC-RP	BC-RP
2023	19912.13	20142.82	84.7	BC-RP	BC-RP
2024	19911.36	20130.32	84.22	CTR-DR	CTR-DR
2025	19953.88	20130.32	82.01	CTR-DR	CTR-DR
2026	19964.33	20220.82	0	CTR-DR	CTR-DR
2027	19883.27	20173.35	84.1	RP	RP
2028	19977.4	20237.08	82.1	RP	RP
2029	19997.3	20255.16	82.44	RP	RP
2030	19997.33	20262.16	82.29	CTR-RMP	CTR-RMP
2031	19997.33	20269.16	82.43	RP	RP
2032	19977.48	20286.71	82.74	RP	RP
2033	19977.33	20310.26	82.96	COR	COR
2034	19952.33	20310.26	83.21	COR	COR
2035	19952.33	20262.16	82.75	CTR-DR	CTR-DR
2036	20035.22	20262.16	79.13	CTR-RMP	CTR-RMP
2037	20077.69	20262.16	72.29	CTR-RMP	CTR-RMP
* 2038	20057.33	20255.16	76.5	RMP-SD	RMP-SD
* 2039	20057.33	20269.16	76.5	RMP-SD	RMP-SD

**HORIZONTAL CONTROL POINTS**

C.P. NO.	N	E	Description
C.P. NO. 1	N 20000.00	E 20000.00	75ft. West of the North Corner of the Existing Gravel Parking Lot 1/2" pin w/Red Cap TRAV.PT Savoy On It.
C.P. NO. 2	N 19891.41	E 21562.49	SE Corner of SECTION 19 Cen. of Senca & 55 ST. S. TH - THIMBAL
C.P. NO. 3	N 19892.37	E 18913.70	SW Corner of Lot 30 Block 3 SIMMONS PARK ADDITION. 3/8" REBAR (Found)

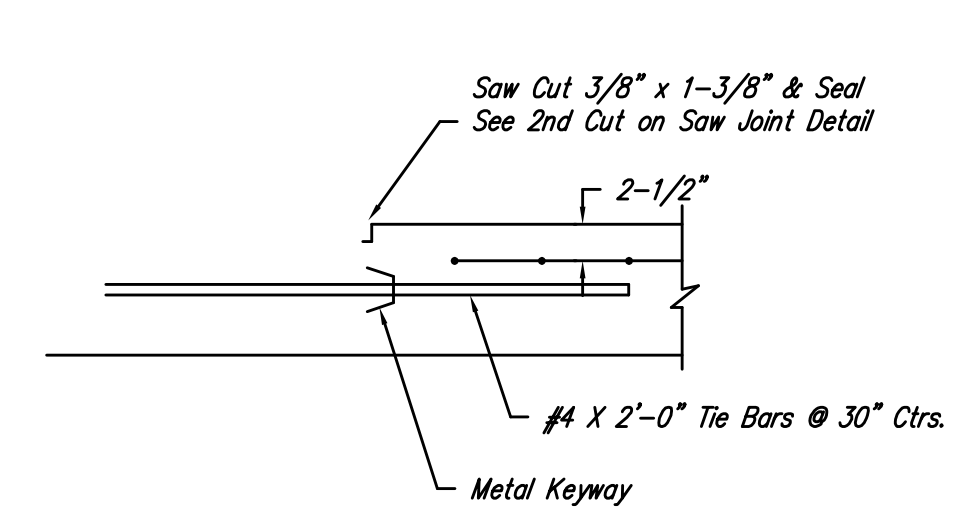
**SOUTHLAKES FISHING LAKE JOINT LAYOUT & CONTROL PLAN**  
 1524 West 68th St S.  
 PROJ. NO.: 472-84196 (785048)  
**CERTIFIED ENGINEERING DESIGN, P.A.**  
 810 WEST DOUGLAS, SUITE C  
 WICHITA, KANSAS 67203  
 PH.(910)202-8808 FAX.(910)202-1000

DESIGNED: HDF	SCALE: 1" = 10'	SHEET 3
DRAWN: BAP	DATE: 5/05	CHECKED: HDF
CED FILE: SOUTHLAKE-BASE	TOTAL 7	

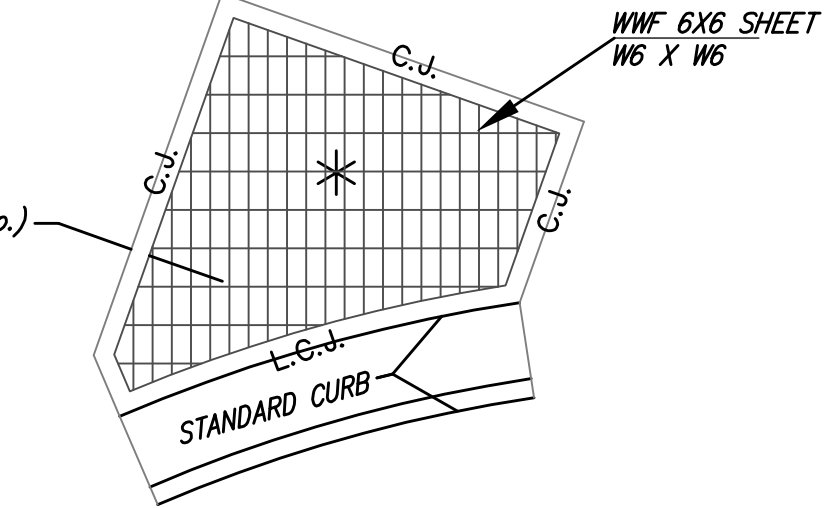


**LONGITUDINAL JOINT DETAIL (L.J.) OR CONTRACTION JOINT DETAIL (C.J.)**

**NOTE:**  
 -Dowels are to be used only in "Cold Joint" locations such as at the end of each day's paving or at unplanned interruptions which suspend operations for an extended time.  
 -If an unplanned construction joint occurs at or near the location of a planned contraction joint, a butt-type joint with smooth dowels is recommended.  
 -If the unplanned construction joint occurs in the middle two-thirds of the normal joint interval, a keyed joint with deformed tiebars should be used.

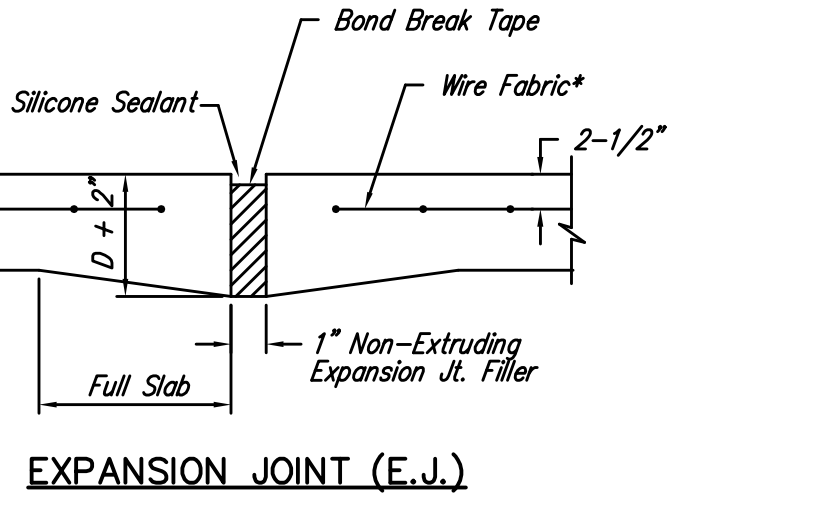


**LONGITUDINAL CONSTRUCTION JOINT DETAIL (L.C.J.)**



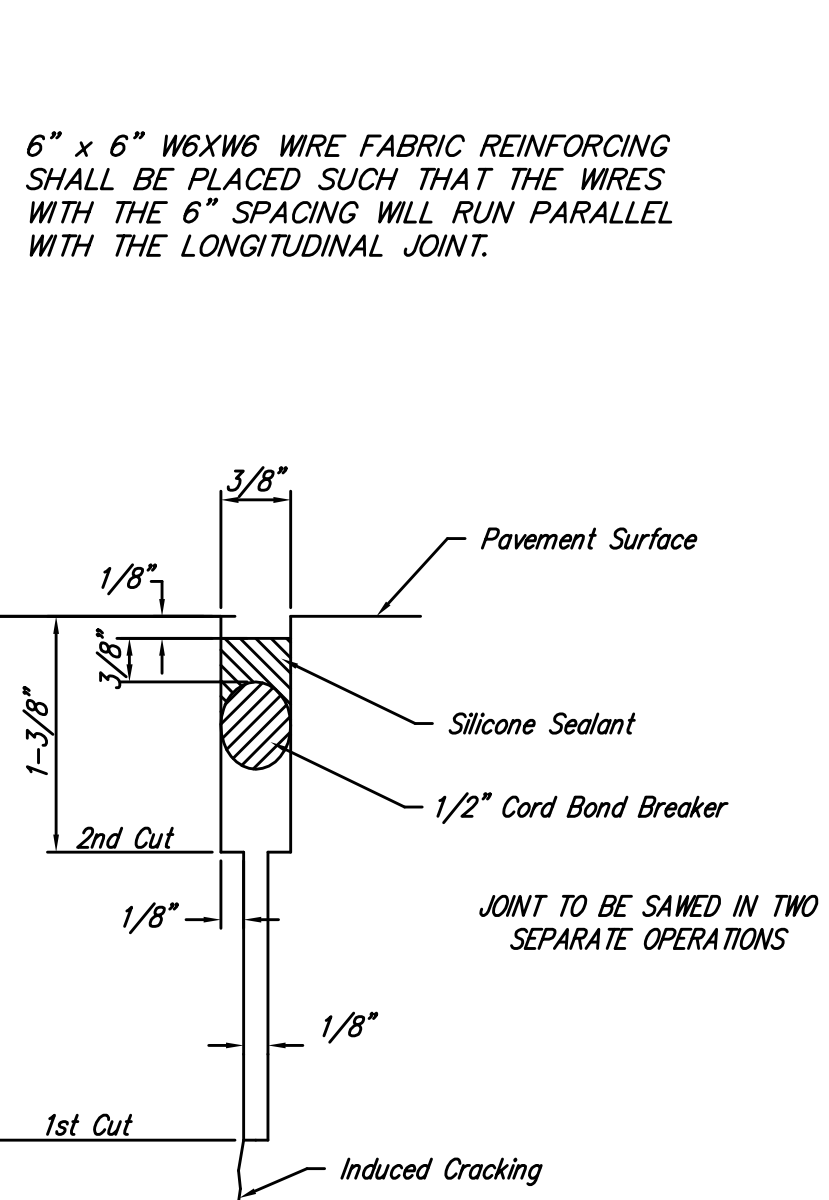
**WIRE FABRIC EXAMPLE DETAIL**

\* Indicates on Plan the use of Wire Fabric

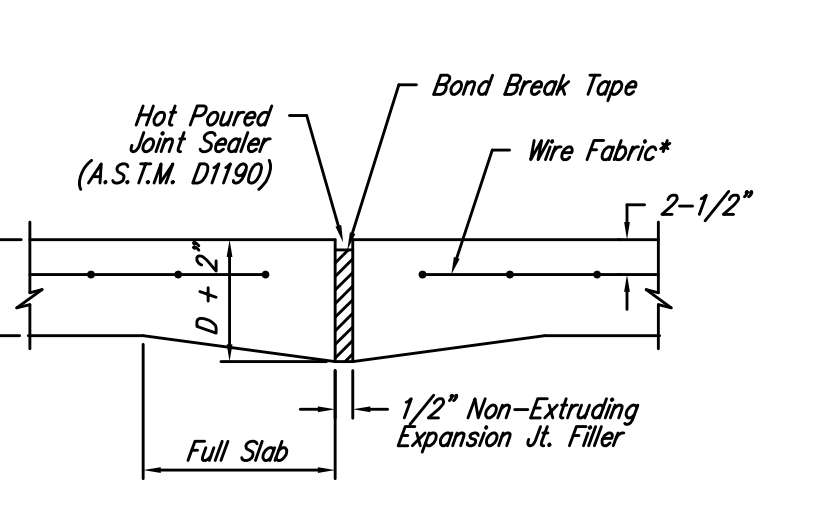


**EXPANSION JOINT (E.J.)**

**NOTE:**  
 -Extra Thickness to be Subsidiary to Price of Square Yards Pavement  
 -Construct at all curb radius point locations.

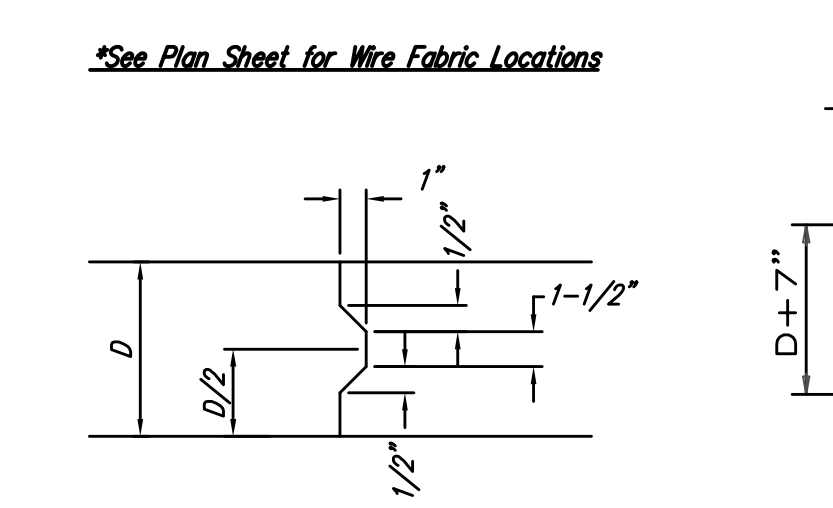


**SAW JOINT DETAIL**  
 Contractor Shall Rope Sawed Joints if Not Sealed Before there is Traffic.

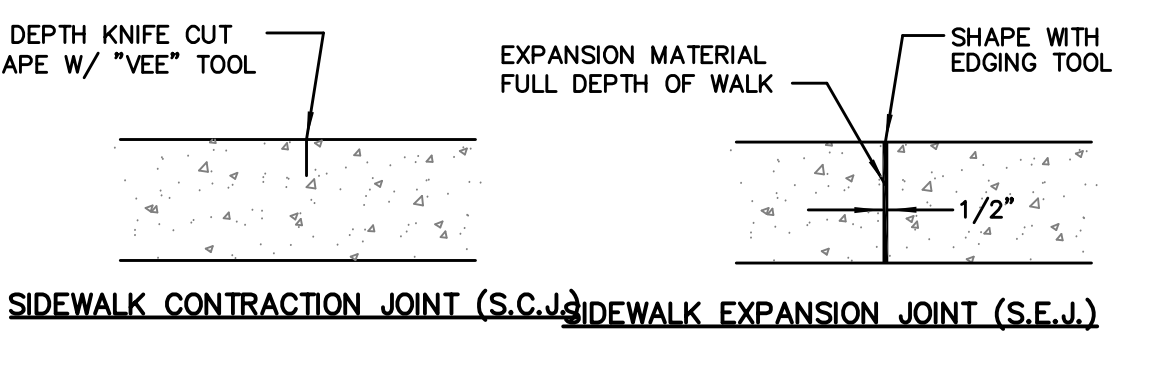


**ISOLATION JOINT (I.J.)**

**NOTE:** Extra Thickness to be Subsidiary to Price of Square Yards Pavement

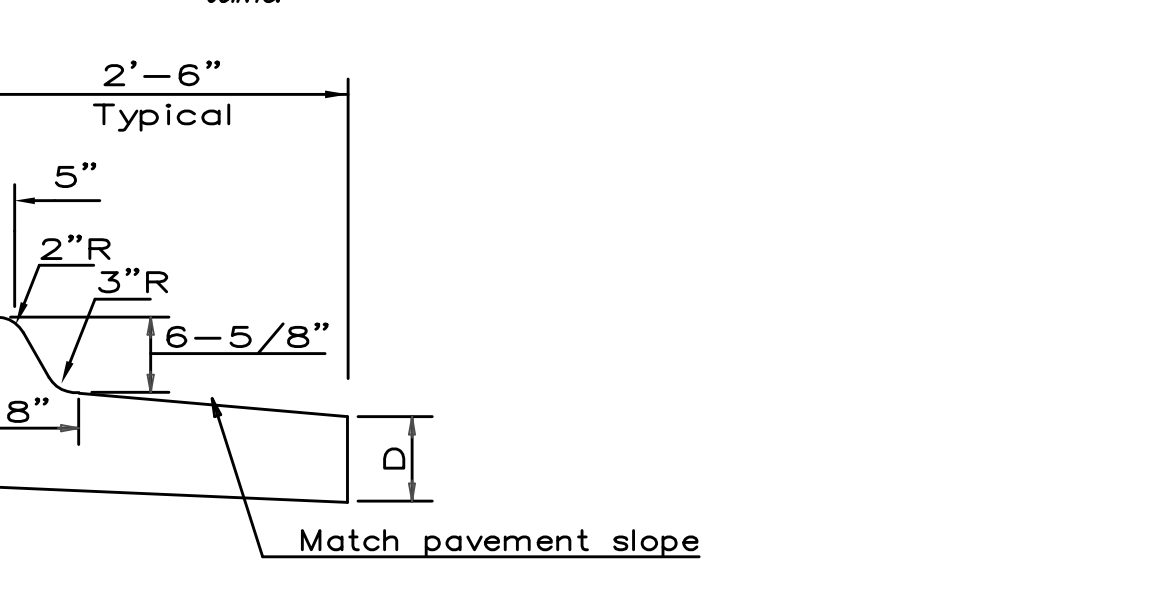


**KEYWAY DETAIL**



**SIDEWALK JOINT DETAILS**  
 NO SAWN JOINTS WILL BE ALLOWED

REFER TO SECTION "407.5 SIDEWALKS" IN THE PROJECT STANDARD SPECIFICATIONS MANUAL FOR THE PROPER PLACEMENT OF THE SIDEWALK CONTRACTION & EXPANSION JOINTS.



**CURB & GUTTER DETAIL (DRAIN AWAY)**