

PROJECT NO.	SHEET NO.	TOTAL SHEET
448 88612	1	1

88612

WATER LINE RELOCATION PLAN AND PROFILE OF PROPOSED SENECA STREET FROM UNIVERSITY AVENUE TO 272 FEET SOUTH OF MCLEAN BOULEVARD

WICHITA, KANSAS SEDGWICK COUNTY

PROJECT NO. 448 88612
INDEX CODE NO.

INDEX OF SHEETS

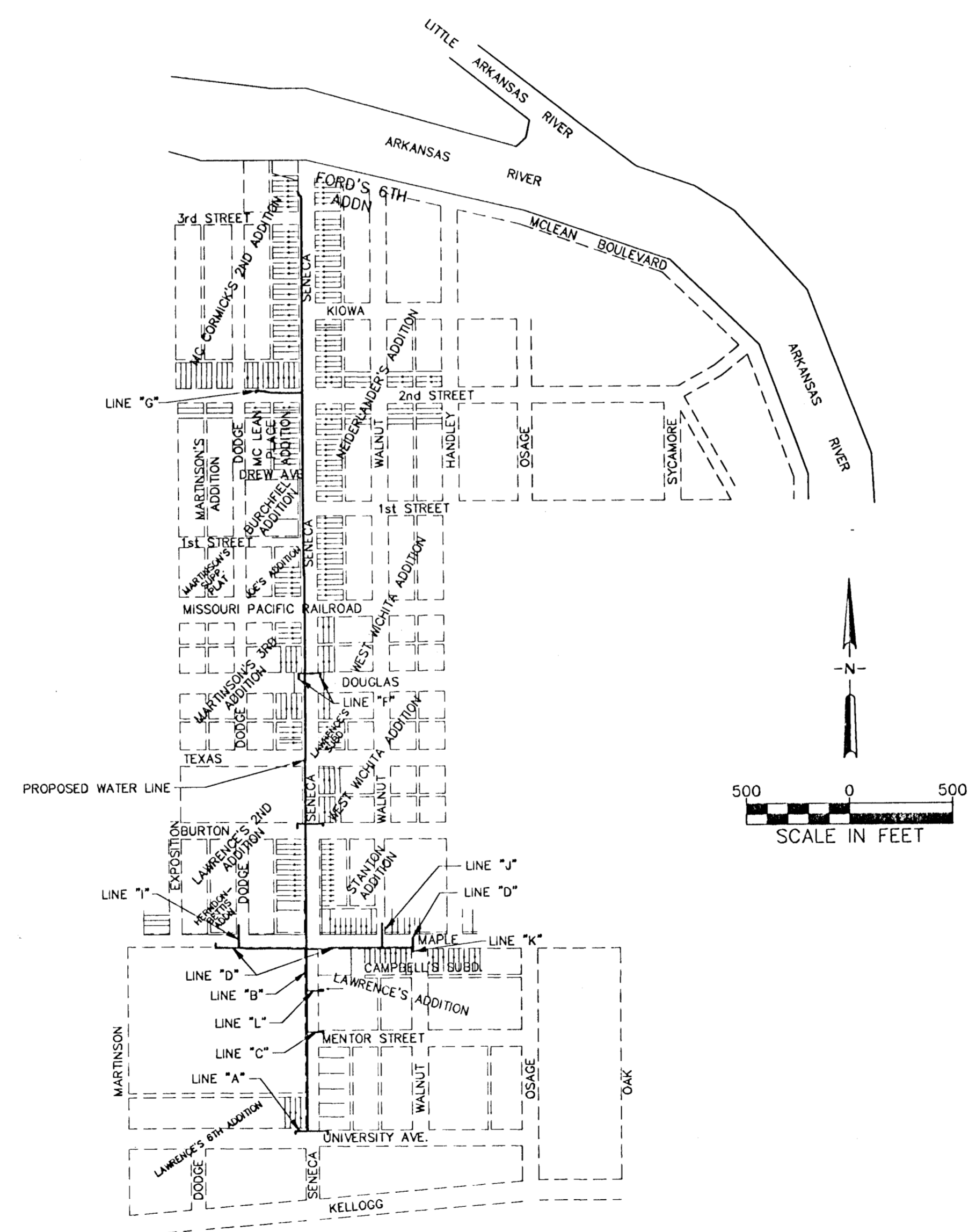
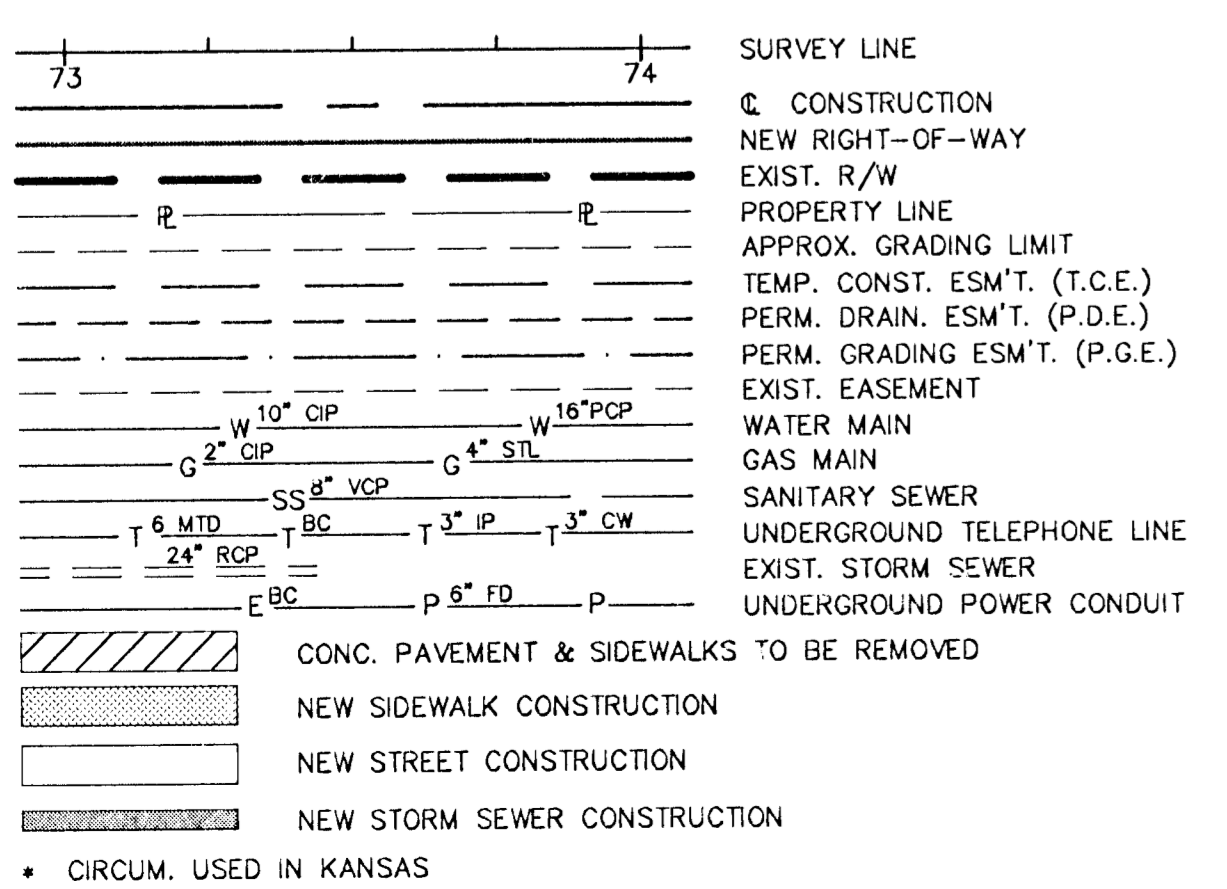
- 1 COVER
- 2 WATER LINE "A","B" PLAN/PROFILE
- 3 WATER LINE "B","C","D" PLAN, LINE "B" PROFILE
- 4 WATER LINE "C","D","E","F" PROFILE
- 5 WATER LINE "B","E" PLAN, LINE "B" PROFILE
- 6 WATER LINE "B" PLAN/PROFILE
- 7 WATER LINE "B","F" PLAN, LINE "B" PROFILE
- 8 WATER LINE "B" PLAN/PROFILE
- 9 WATER LINE "B","G","H" PLAN, LINE "B","H" PROFILE
- 10 WATER LINE "H" PLAN/PROFILE
- 11 WATER LINE "D","I" PLAN/PROFILE
- 12 WATER LINE "D","J","K" PLAN/PROFILE
- 13 WATER LINE "G" PLAN/PROFILE
- 14 WATER LINE DETAILS

ABBREVIATIONS

C.I.P.	CAST IRON PIPE	§	SURVEY LINE
C.S.P.A.	CORRUGATED STEEL PIPE ARCH	⊖	BASE LINE
C.S.P.	CORRUGATED STEEL PIPE	⊖	CENTERLINE
D.I.P.	DUCTILE IRON PIPE	ESMT.	EASEMENT
M.T.D.	MULTIPLE TILE DUCT	T.C.E.	TEMPORARY CONSTRUCTION EASEMENT
P.V.C.	POLY VINYL CHLORIDE PIPE	P.D.E.	PERMANENT DRAINAGE EASEMENT
R.C.P.	REINFORCED CONCRETE PIPE	P.G.E.	PERMANENT GRADING EASEMENT
R.C.B.	REINFORCED CONCRETE BOX	CLF	CHAIN LINK FENCE
L.S.	LAWN SPRINKLER	WWF	WOVEN WIRE FENCE
A.C.	ASPHALTIC CONCRETE	BWF	BARBED WIRE FENCE
P.C.C.	PORTLAND CEMENT CONCRETE	MH	MANHOLE
CR. STN.	CRUSHED STONE	CI	CURB INLET
H.B. C&G	HIGH BACKED CURB & GUTTER	DI	DITCH INLET
L.B. C&G	LOW BACKED CURB & GUTTER	BC	BURIED CABLE
U.I.P.	USE IN PLACE	BK CB	BACK OF CURB
L.I.P.	LEAVE IN PLACE	V.C.P.	VITRIFIED CLAY PIPE

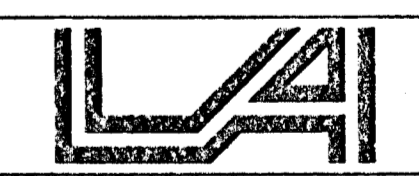
LEGEND

- ⊕ TH TEST HOLE
- ⊗ TSL TRAFFIC SIGNAL LIGHT
- FH FIRE HYDRANT (EXISTING)
- FH FIRE HYDRANT (NEW)
- ⊖ TP TELEPHONE POLE
- ⊖ Tel. Riser TELEPHONE RISER
- SAN MH, STORM MH SANITARY SEWER MANHOLE OR STORM SEWER MANHOLE
- YL YARD LIGHT
- ⊖ LP, FLP STREET LIGHT OR FLOOD LIGHT POLE
- ⊖ E.MH, TEL.MH ELECTRICAL MANHOLE OR TELEPHONE MANHOLE
- ⊗ IPPC IRON PIN PROPERTY CORNER
- ⊕ PP, TPP, GP POWER POLE, TELEPHONE POWER POLE OR GUY POLE
- ⊕ LTPP LIGHT TELEPHONE POWER POLE
- ⊖ G.M. GAS METER
- ⊖ W.M. WATER METER (EXISTING)
- ⊖ W.M. WATER METER (RESET)
- ⊗ G.V. GAS VALVE
- ⊗ W.V. WATER VALVE (EXISTING)
- ⊗ W.V. WATER VALVE (NEW)
- ⊖ SS STREET SIGN
- ⊖ ANCH GUY ANCHOR
- ⊖ M.B. MAIL BOX
- BUSH (DIAMETER)
- ⊙ EVERGREEN TREE (APPROX. TRUNK . . .)
- ⊙ DECIDUOUS TREE (APPROX. TRUNK . . .)
- X = ITEM TO BE REMOVED IN CONSTRUCTION
- (R) ITEM TO BE REMOVED IN CONSTRUCTION



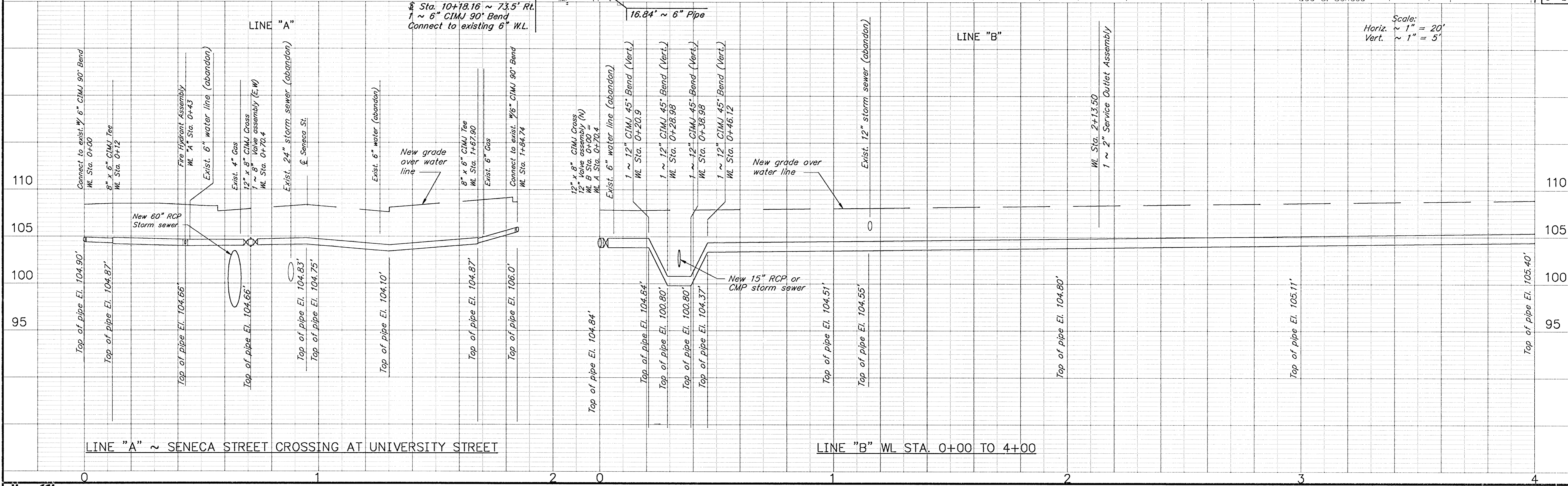
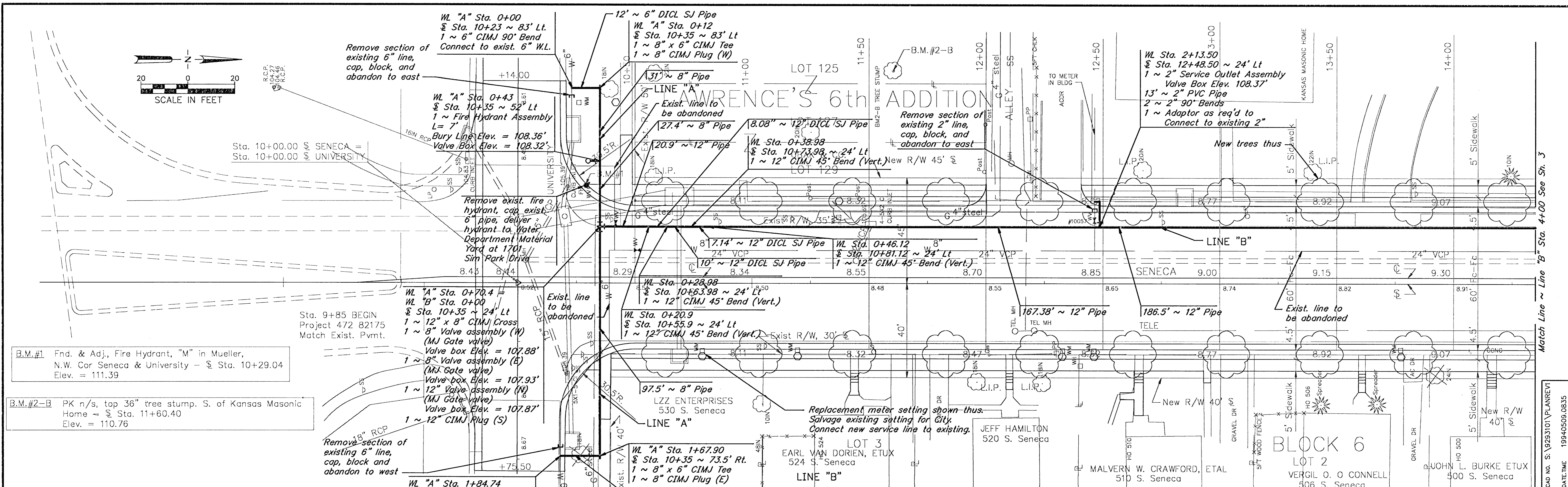
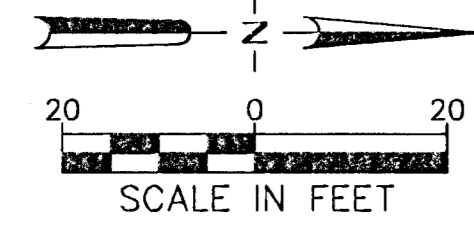
M. E. LINDEBAK, P.E.
CITY ENGINEER

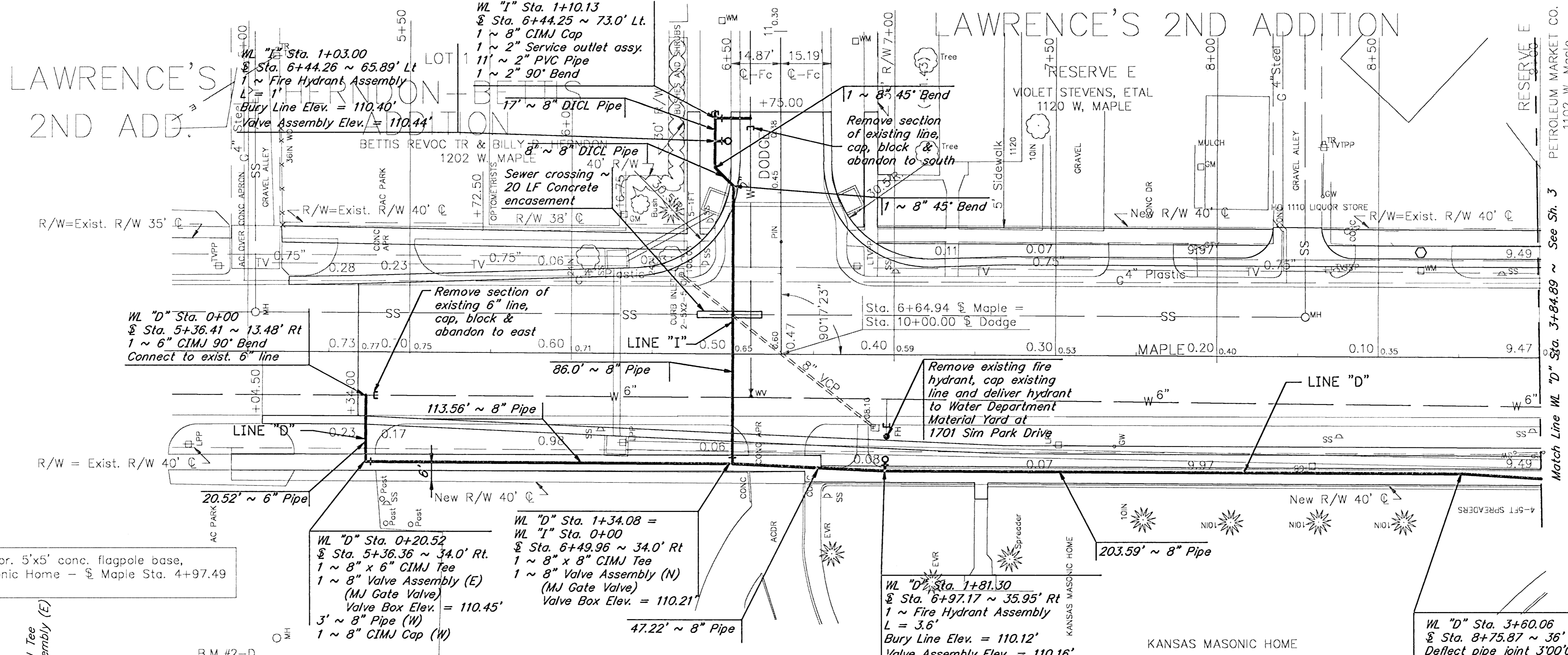
STEVEN R. LACKEY, P.E.
DIRECTOR, PUBLIC WORKS



Larkin Associates
Consulting Engineers, Inc.

ENGINEER	DATE
CITY ENGINEER	DATE
DIRECTOR, PUBLIC WORKS	DATE





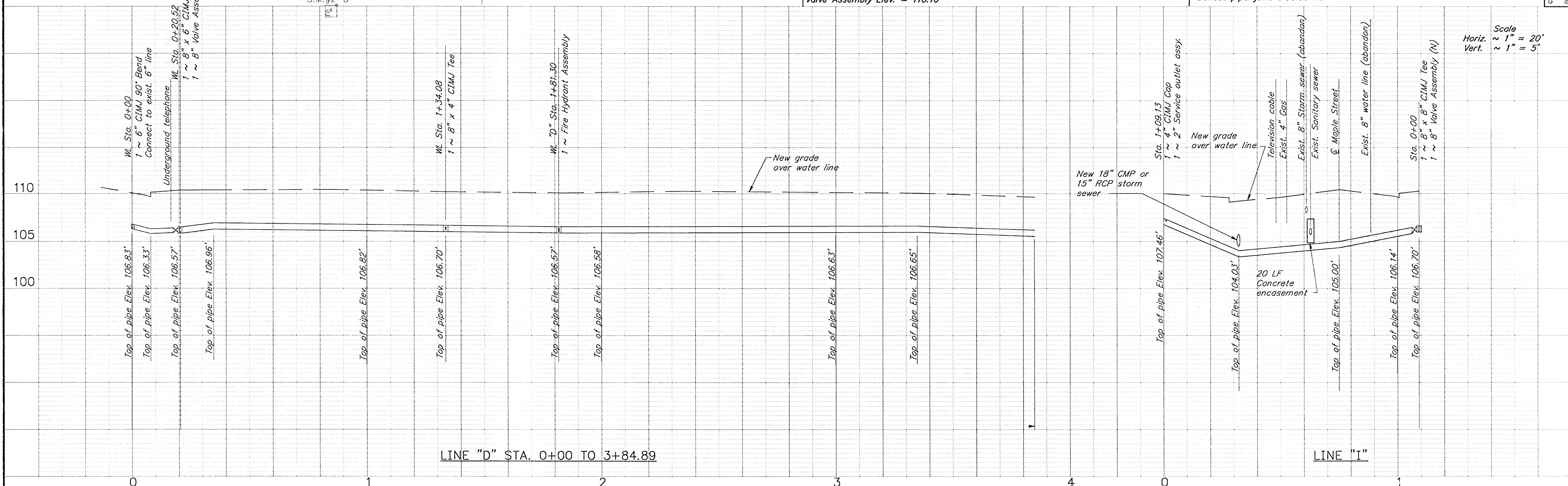
B.M. #2-D Chis. "a" Top N.E. Cor. 5'x5' conc. flagpole base, N. Side Kansas Masonic Home - \pm Maple Sta. 4+97.49 Elev. = 112.37

WL "D" Sta. 0+20.52 \pm Sta. 5+36.36 ~ 34.0' Rt. 1 ~ 8" x 6" CIMJ Tee 1 ~ 8" Valve Assembly (E) (MJ Gate Valve) Valve Box Elev. = 110.45' 3' ~ 8" Pipe (W) 1 ~ 8" CIMJ Cap (W)

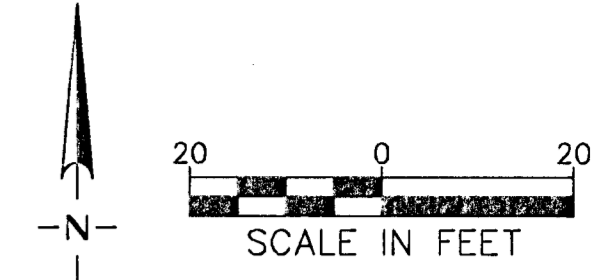
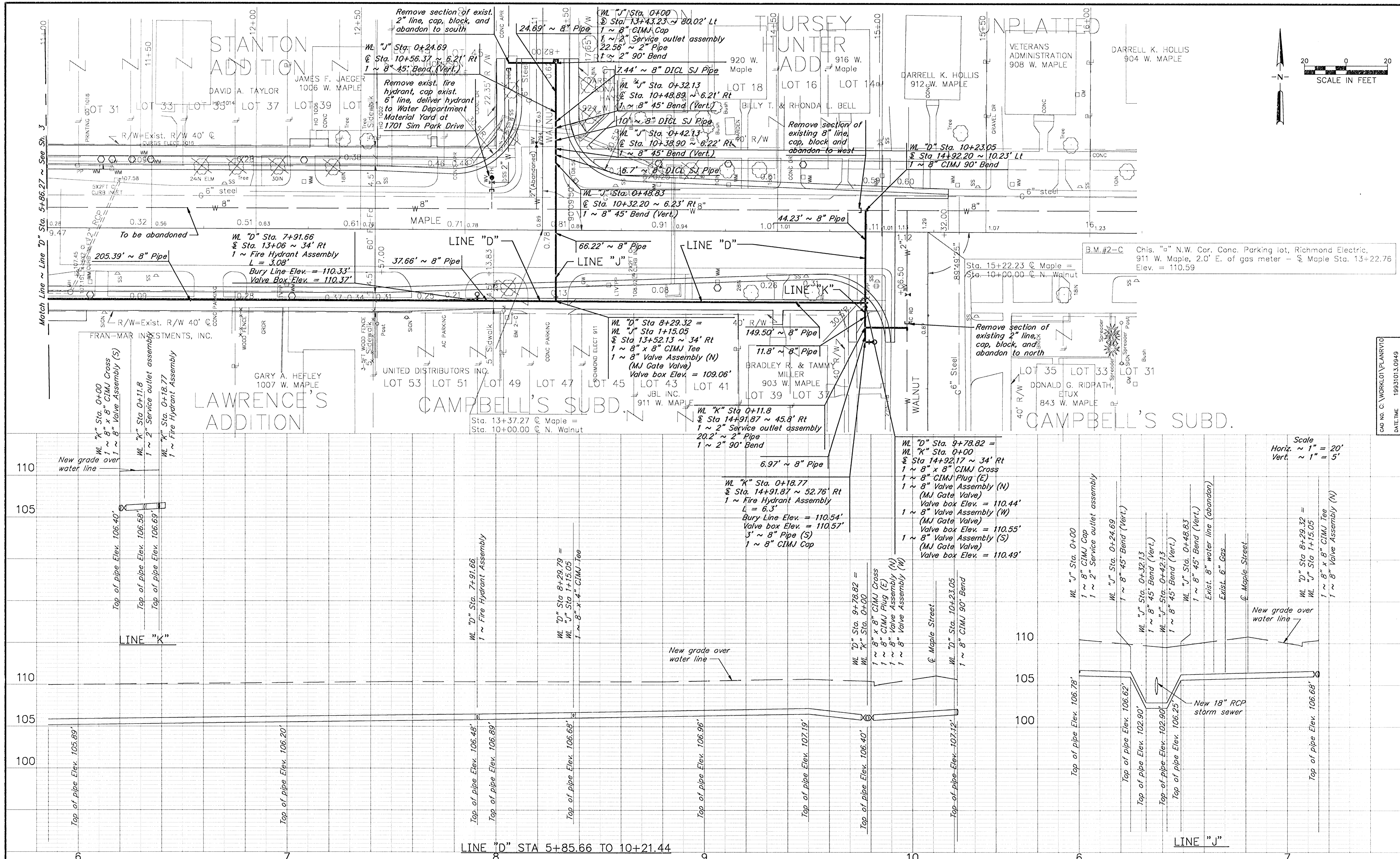
WL "I" Sta. 0+00 = \pm Sta. 6+49.96 ~ 34.0' Rt 1 ~ 8" x 8" CIMJ Tee 1 ~ 8" Valve Assembly (N) (MJ Gate Valve) Valve Box Elev. = 110.21'

WL "D" Sta. 1+81.30 \pm Sta. 6+97.17 ~ 35.95' Rt 1 ~ Fire Hydrant Assembly L = 3.6' Bury Line Elev. = 110.12' Valve Assembly Elev. = 110.16'

WL "D" Sta. 3+60.06 \pm Sta. 8+75.87 ~ 36' Rt Deflect pipe joint 3'00"00'Rt.

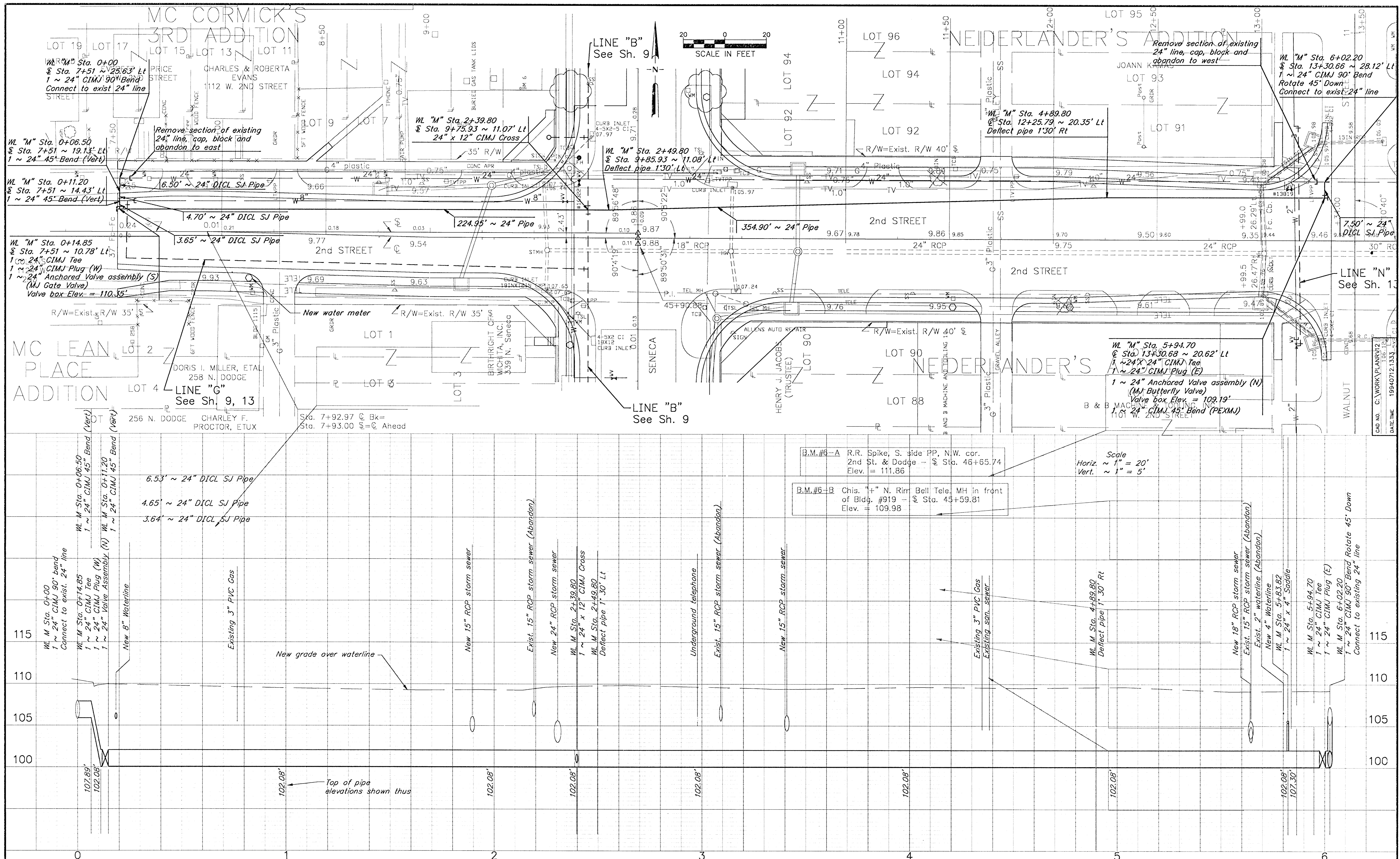


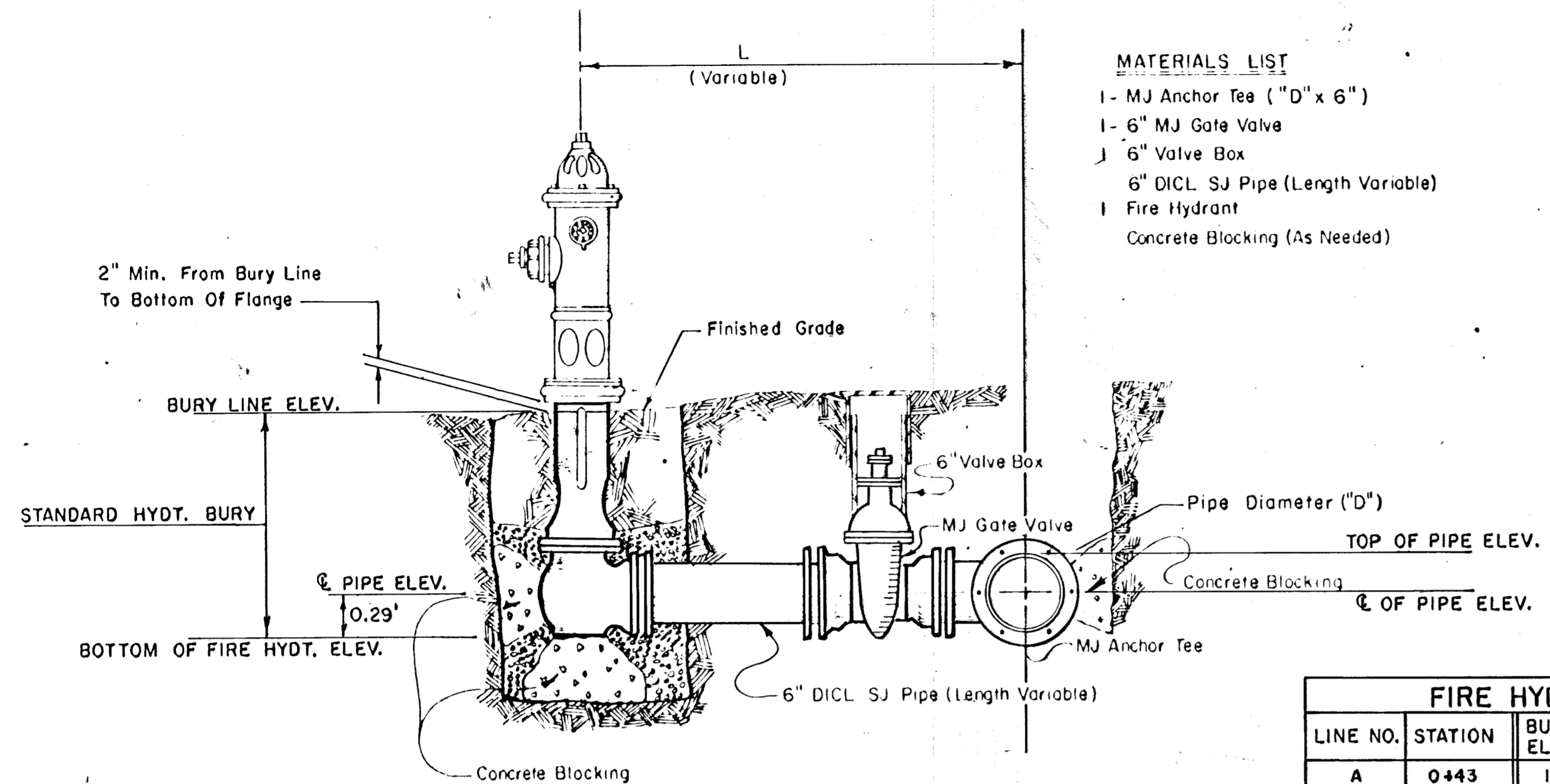
Scale
 Horiz. ~ 1" = 20'
 Vert. ~ 1" = 5'



Scale
 Horiz. ~ 1" = 20'
 Vert. ~ 1" = 5'

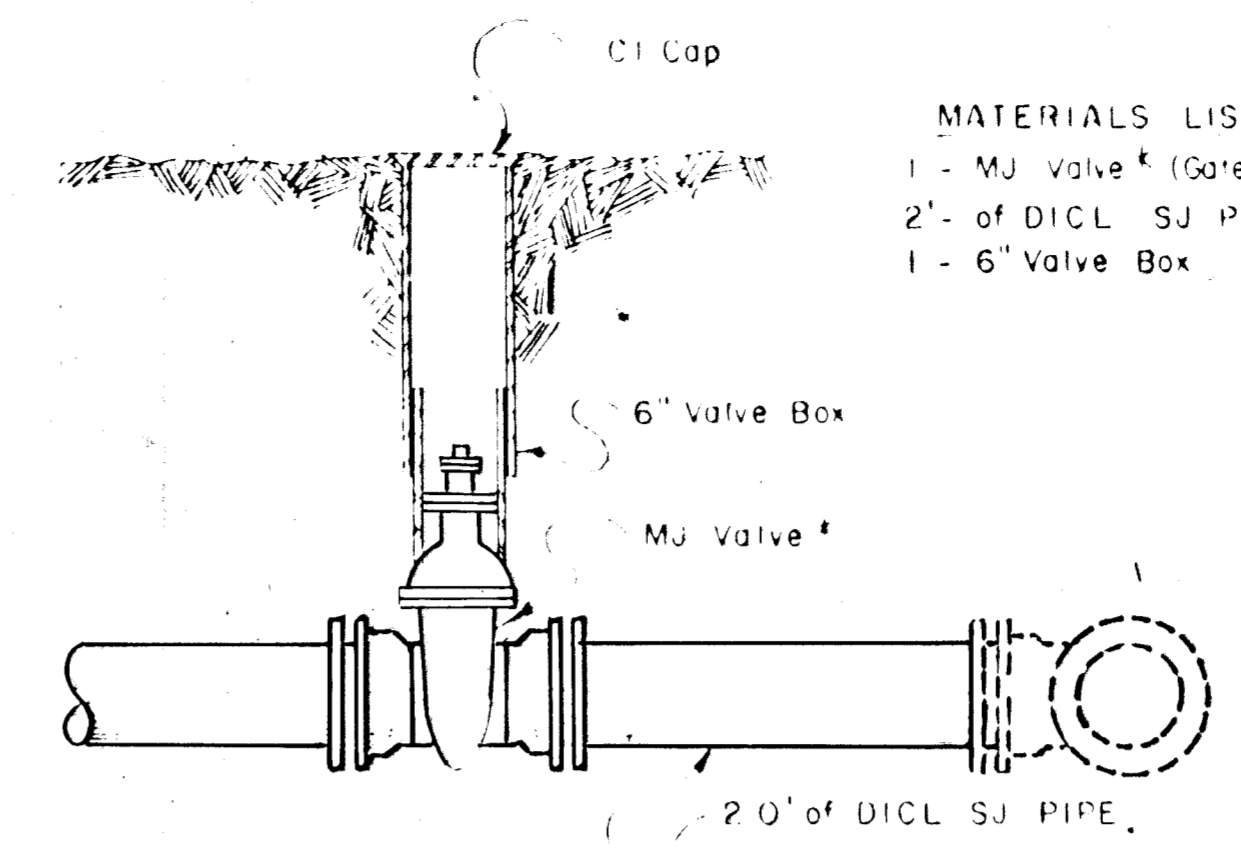
CAD NO. C:\WORK\LOT\PLANR\VO
 DATE: TIME 19931013.0949





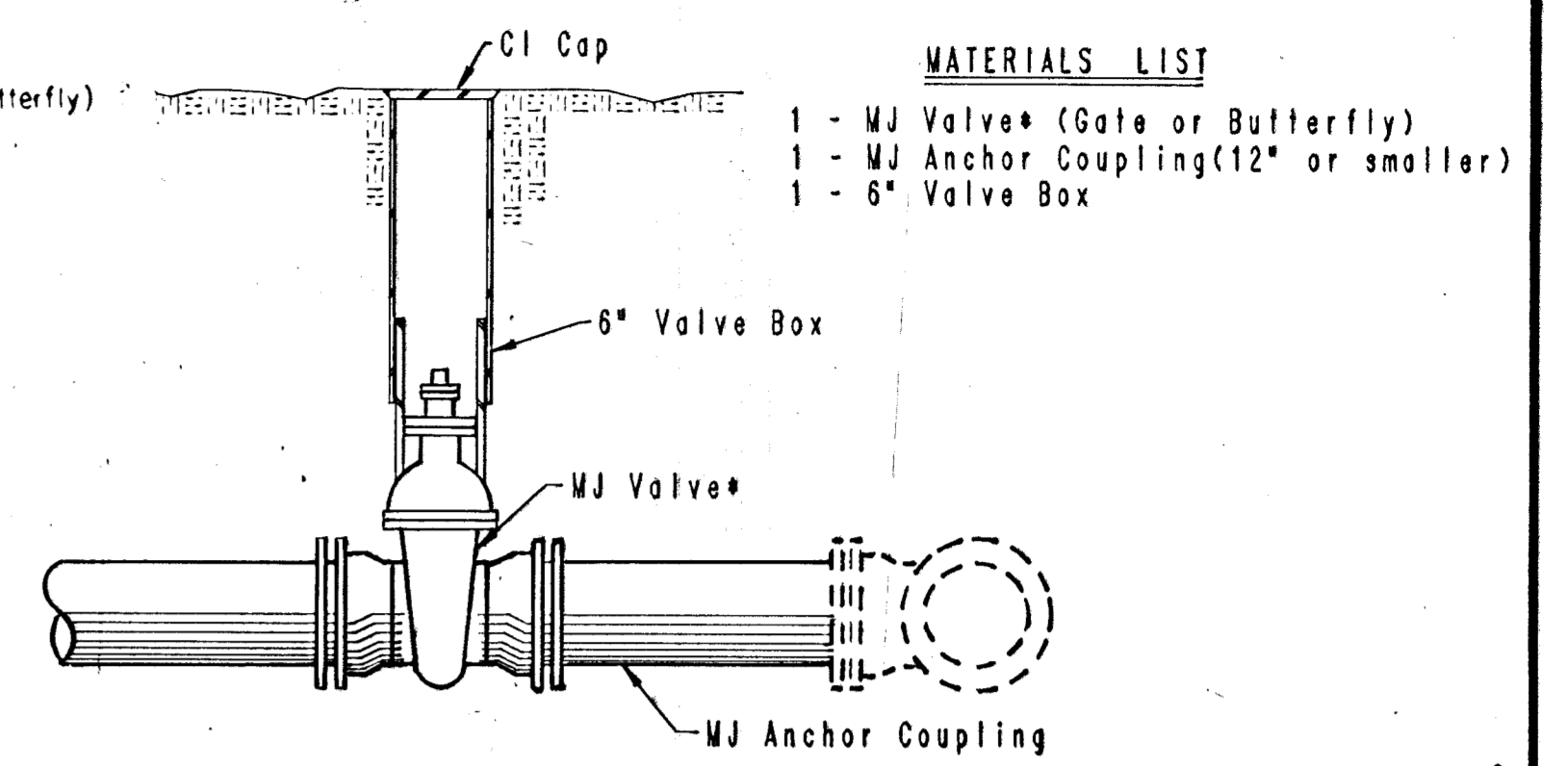
- MATERIALS LIST**
- 1 - MJ Anchor Tee (12" x 6")
 - 1 - 6" MJ Gate Valve
 - 1 - 6" Valve Box
 - 6" DI CL SJ Pipe (Length Variable)
 - 1 Fire Hydrant
 - Concrete Blocking (As Needed)

FIRE HYDRANT ASSEMBLY



- MATERIALS LIST**
- 1 - MJ Valve* (Gate or Butterfly)
 - 2' - of DI CL SJ Pipe
 - 1 - 6" Valve Box

VALVE ASSEMBLY



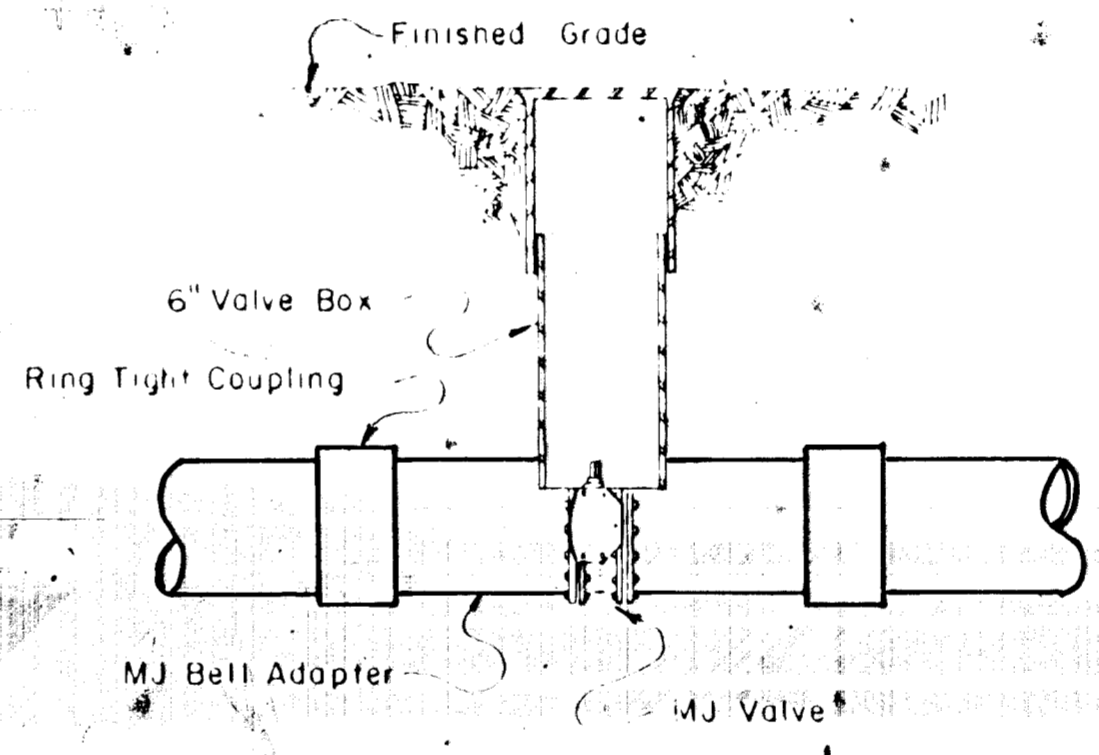
- MATERIALS LIST**
- 1 - MJ Valve* (Gate or Butterfly)
 - 1 - MJ Anchor Coupling (12" or smaller)
 - 1 - 6" Valve Box

ANCHORED VALVE ASSEMBLY

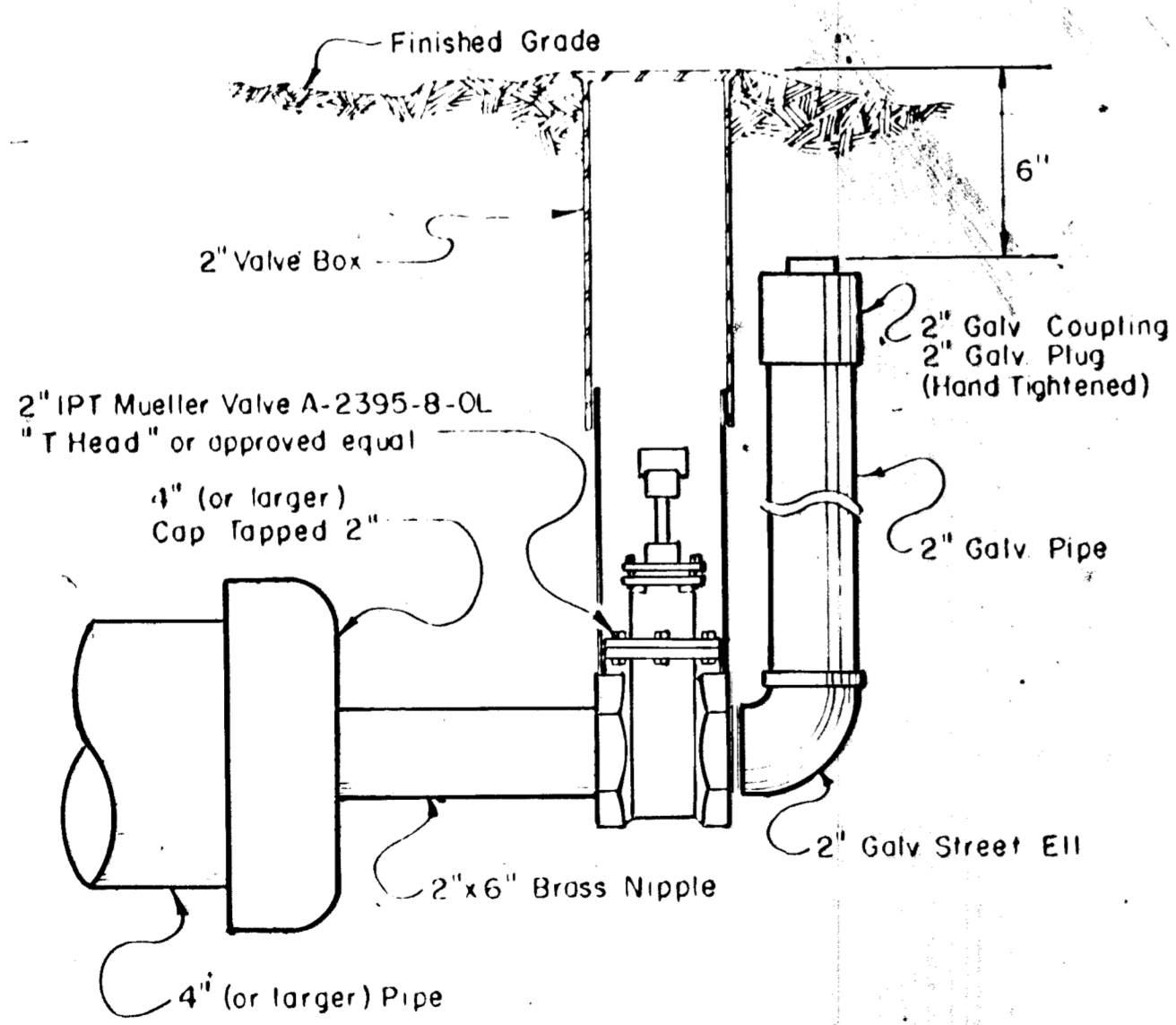
FIRE HYDRANTS REQUIRED

LINE NO.	STATION	BURY LINE ELEVATION	TOP OF PIPE ELEVATION	FIRE HYDRANT BURY REQUIRED
A	0+43	108.36	104.68	4.5'
B	9+71.3	109.70	106.02	4.5'
B	18+35.13	111.80	107.46	4.5'
B	27+35.95	113.62	109.94	4.5'
B	31+58.05	111.70	108.02	4.5'
C	0+64	109.11	105.17	4.5'
D	1+81.3	110.12	106.57	4.5'
D	7+91.66	110.33	106.48	4.5'
E	0+27.1	111.05	107.57	4.5'
F	0+32.81	113.09	103.24	4.5'
G	2+00	109.60	102.81	5.0'
H	3+72.26	110.76	107.08	4.5'
H	8+00.26	111.33	107.65	4.5'
K	0+18.77	110.54	106.69	4.5'
B*	30+30.12	112.00	107.50	4.5'
J	1+81.30	110.40	105.90	4.5'

* Contractor to use std. 5.0' bury hydrant and hydrant barrel extensions as required.



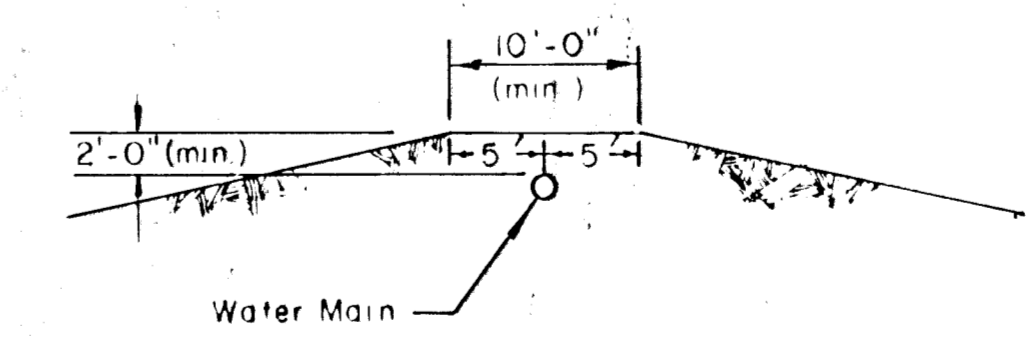
LINE VALVE ASSEMBLY



2" BLOWOFF ASSEMBLY

- MATERIALS LIST**
- 1 - 2" Valve Box
 - 1 - CIMJ Cap
 - 1 - 2"x6" Brass Nipple
 - 1 - 2" IPT Mueller Valve A-2395-B-01
 - "T Head" or approved equal
 - 1 - 2" Galv Street Ell
 - 2" Galv Pipe (as required)
 - 1 - 2" Galv Coupling
 - 1 - 2" Galv Plug (Hand Tightened)

- MATERIALS LIST**
- 1 - MJ Valve (Gate or Butterfly)
 - 1 - 6" Valve Box
 - 2 - Ring Tight Couplings
 - 2 - MJ Bell Adaptors



PROTECTIVE FILL DETAIL

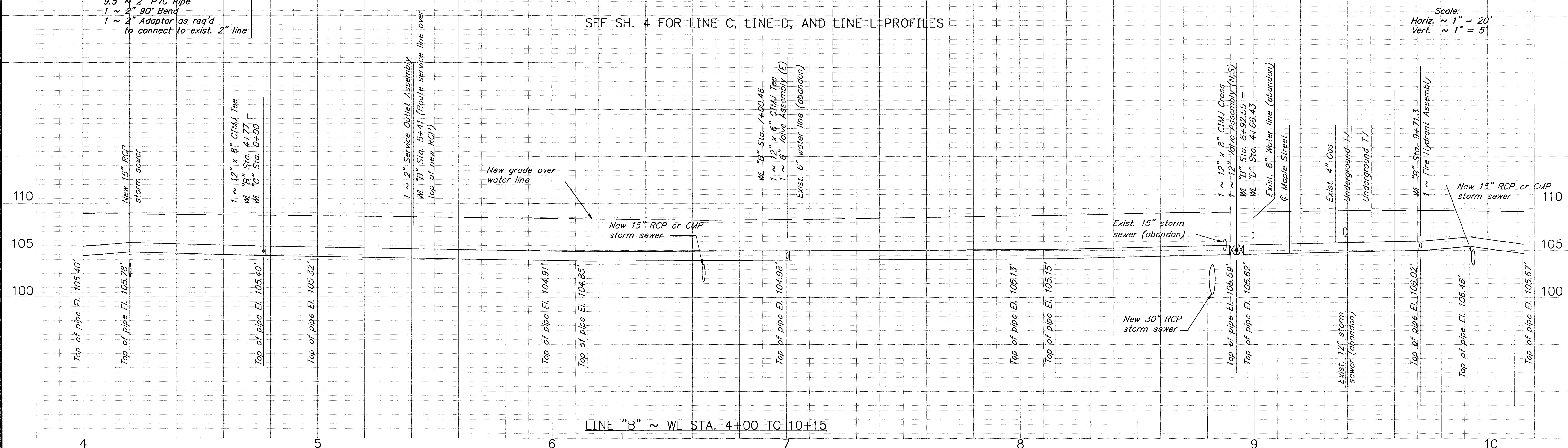
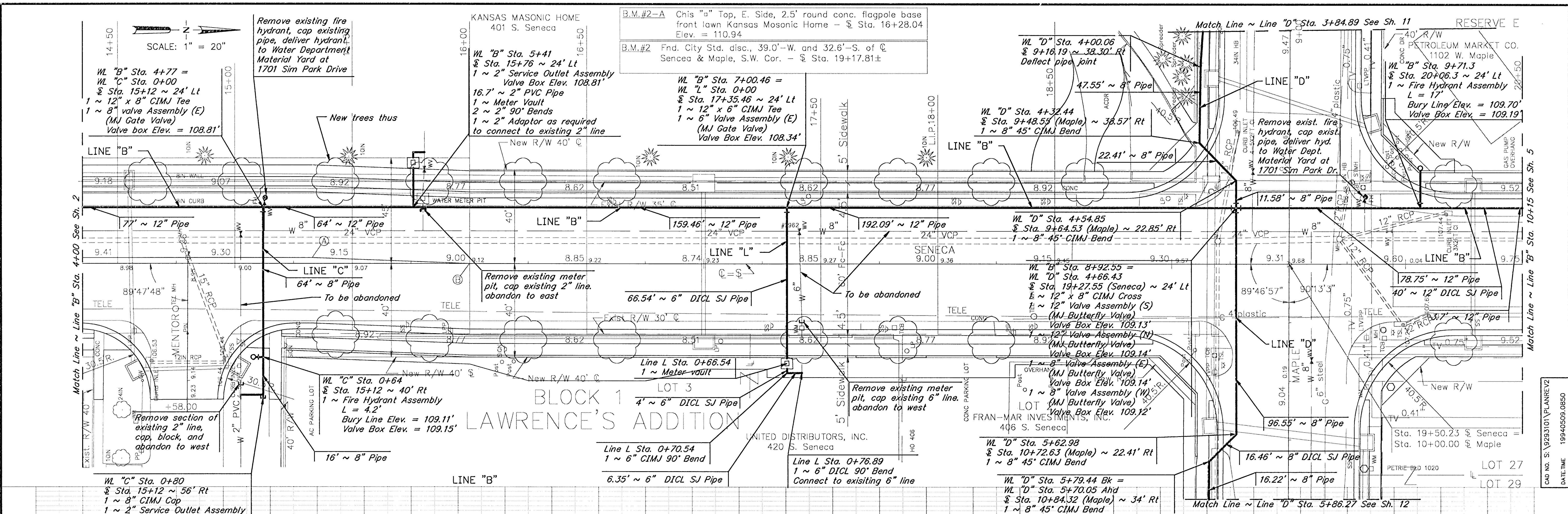
MINIMUM PROTECTIVE FILL SHALL BE PROVIDED IN ALL INSTANCES WHERE COVER OVER THE PROPOSED WATER LINE IS LESS THAN TWO (2) FEET. (COST SUBSIDIARY TO PIPE INSTALLATION.)

Revised 2-17-1988

STANDARD WATER ASSEMBLY DETAILS
CITY OF WICHITA, KANSAS

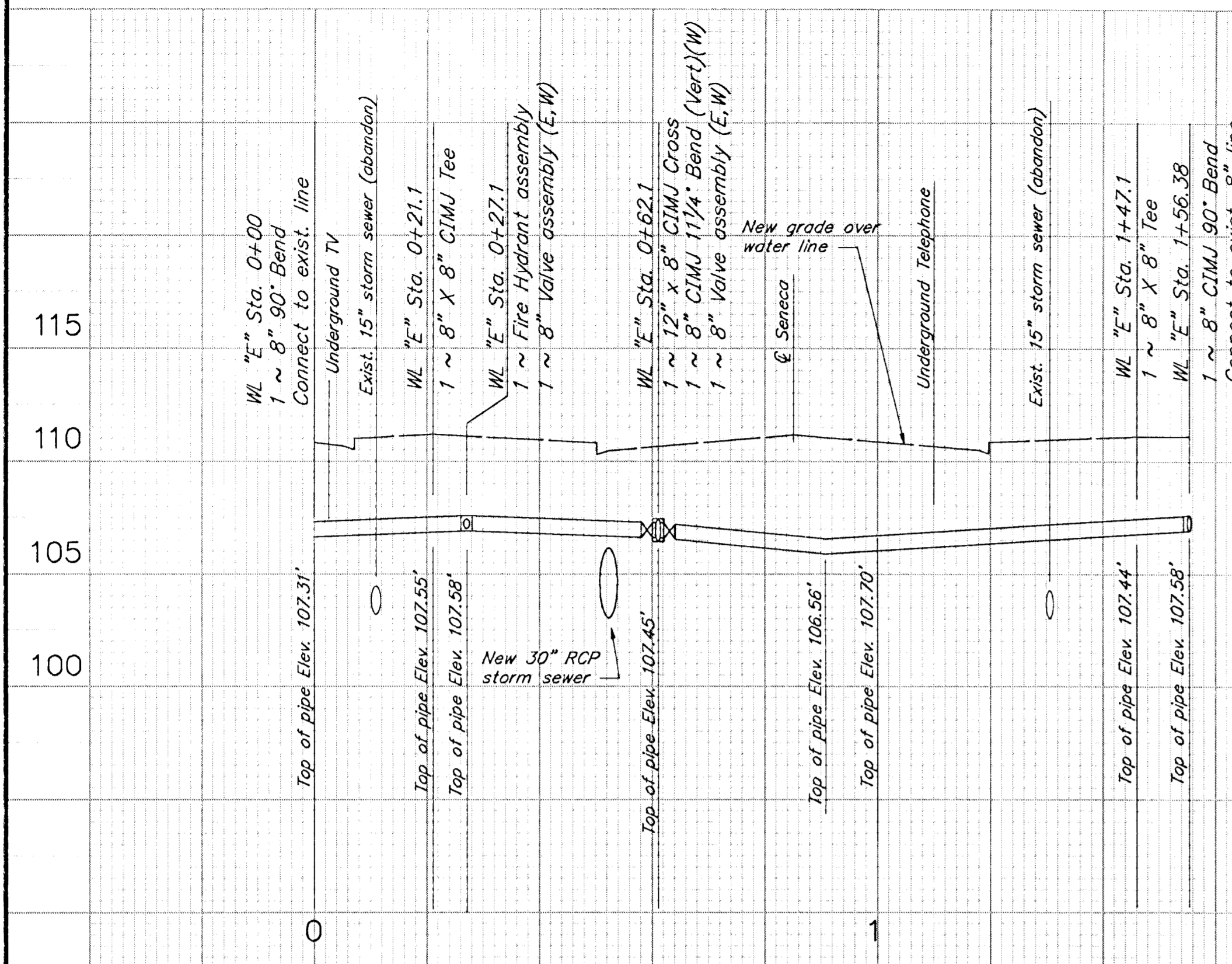
JANUARY, 1987

15
15

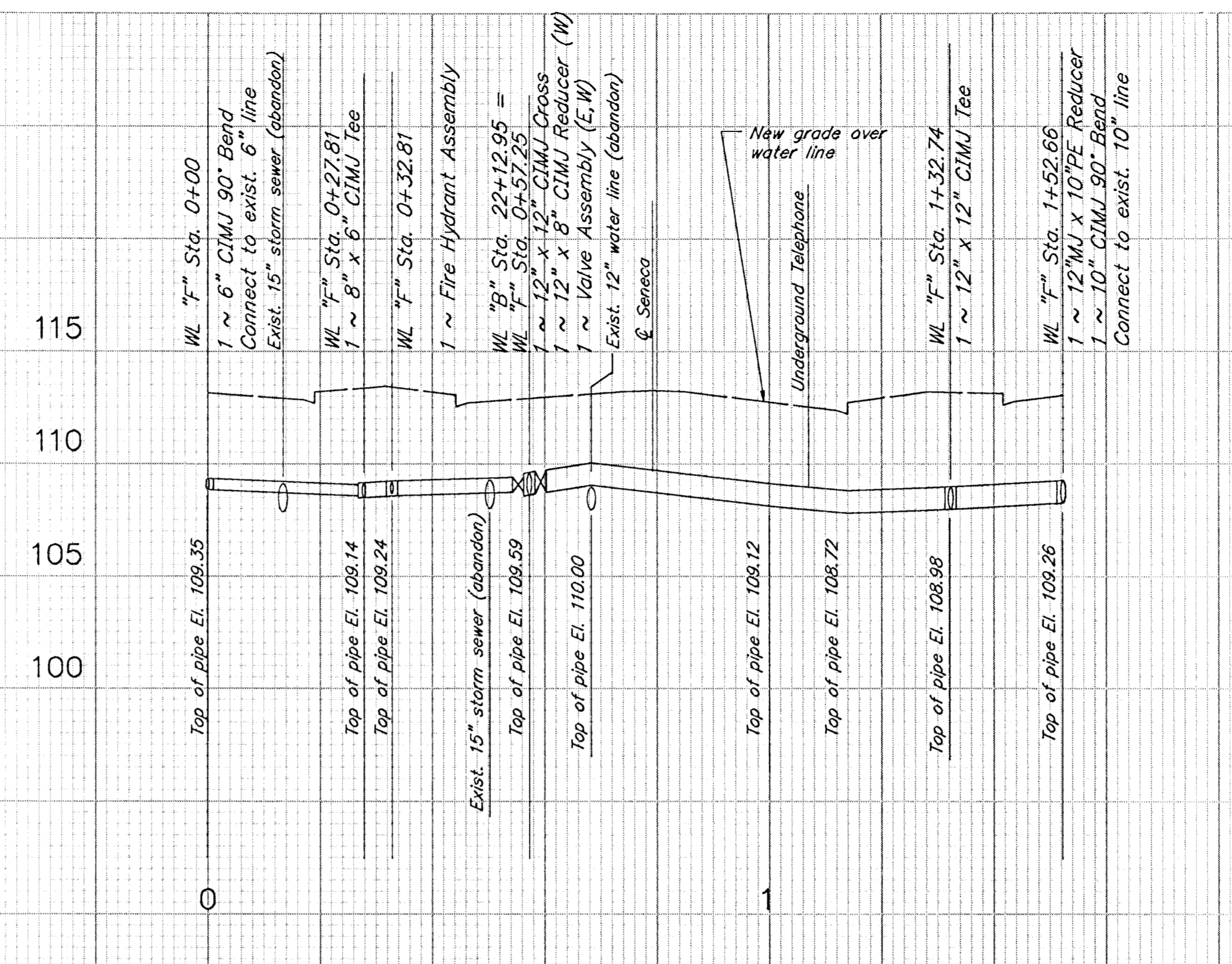


SEE SH. 4 FOR LINE C, LINE D, AND LINE L PROFILES

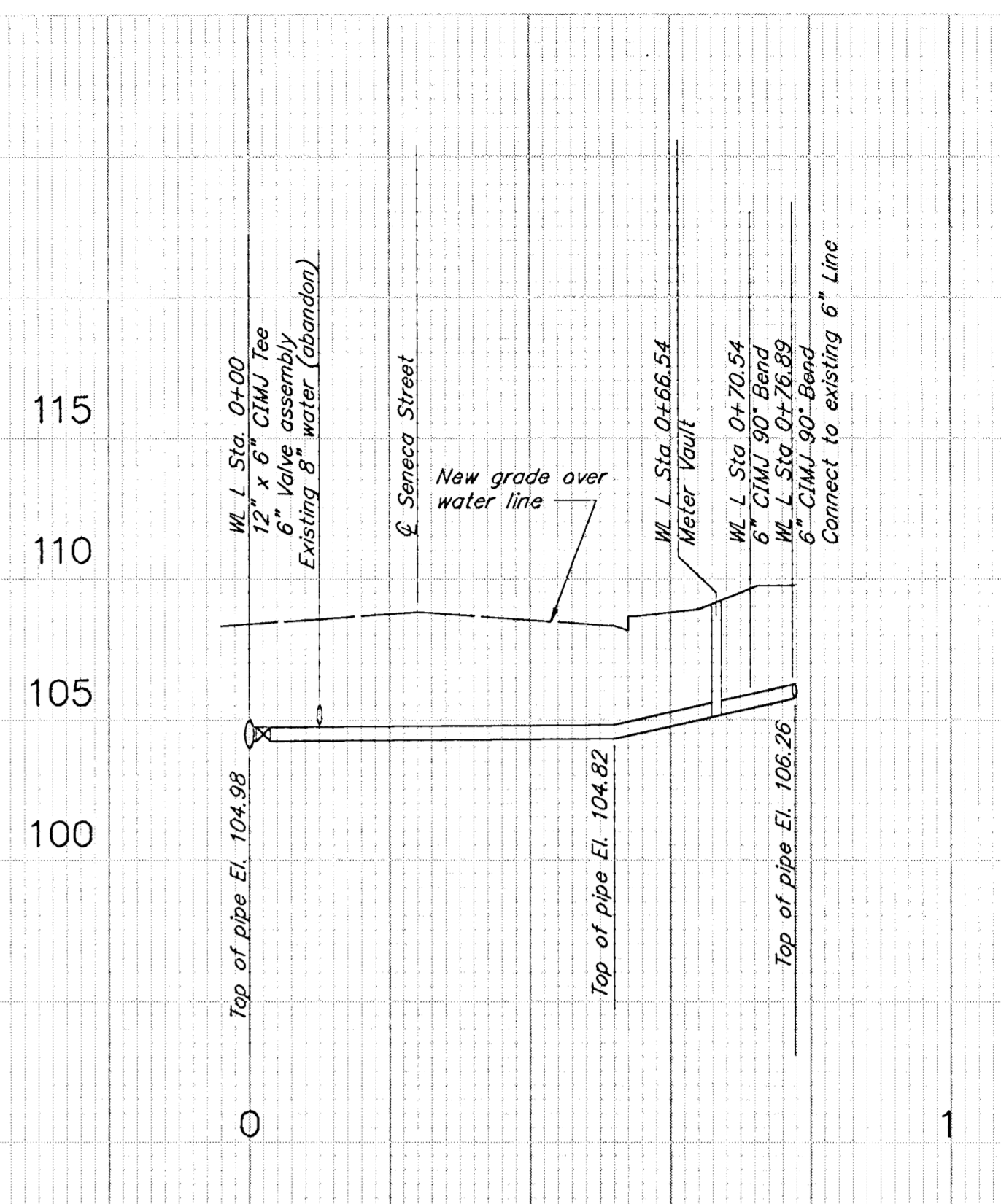
Scale:
 Horiz. ~ 1" = 20'
 Vert. ~ 1" = 5'



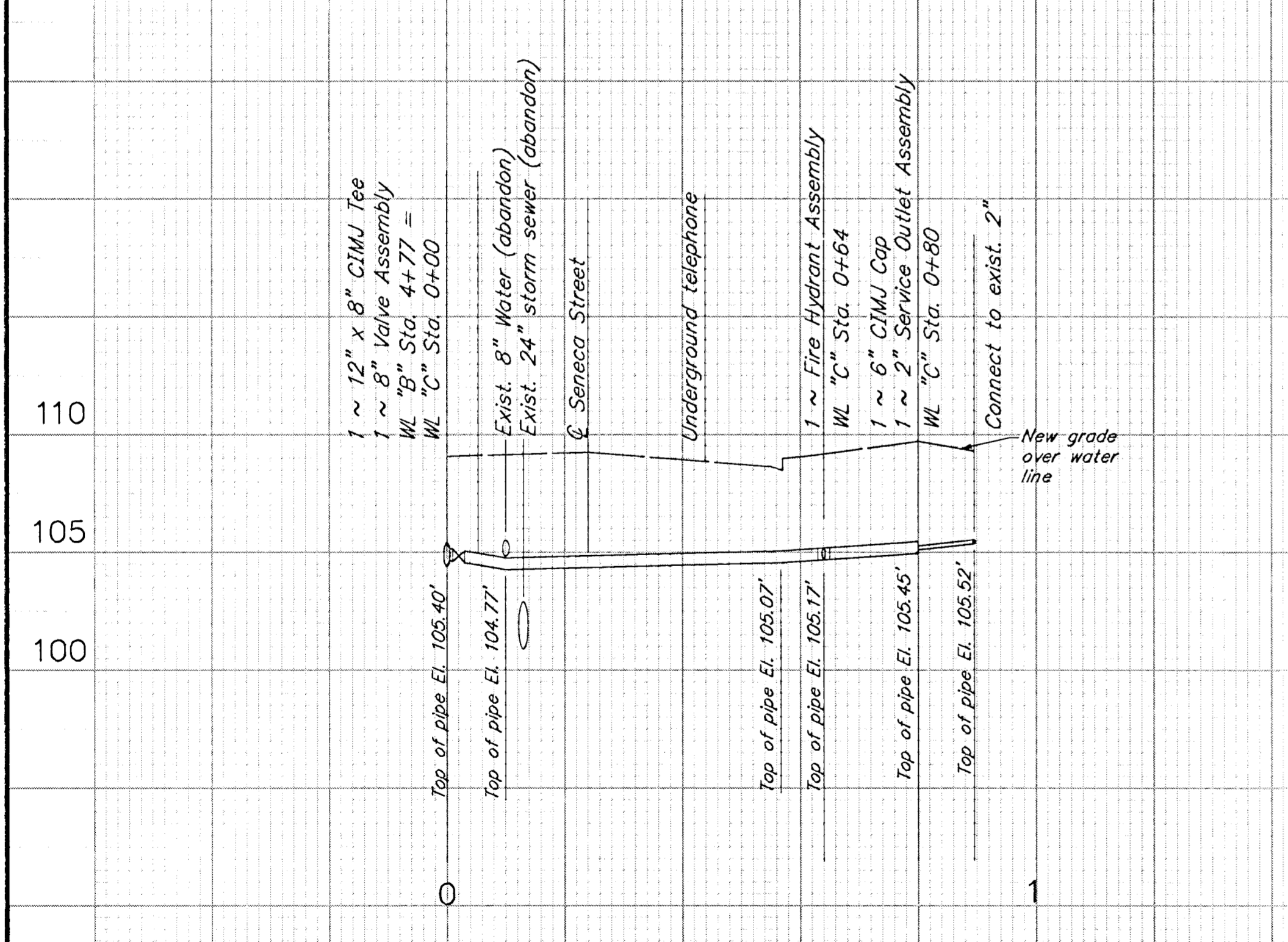
LINE "E" ~ BURTON STREET WATER LINE
SEE SH 5 FOR PLAN



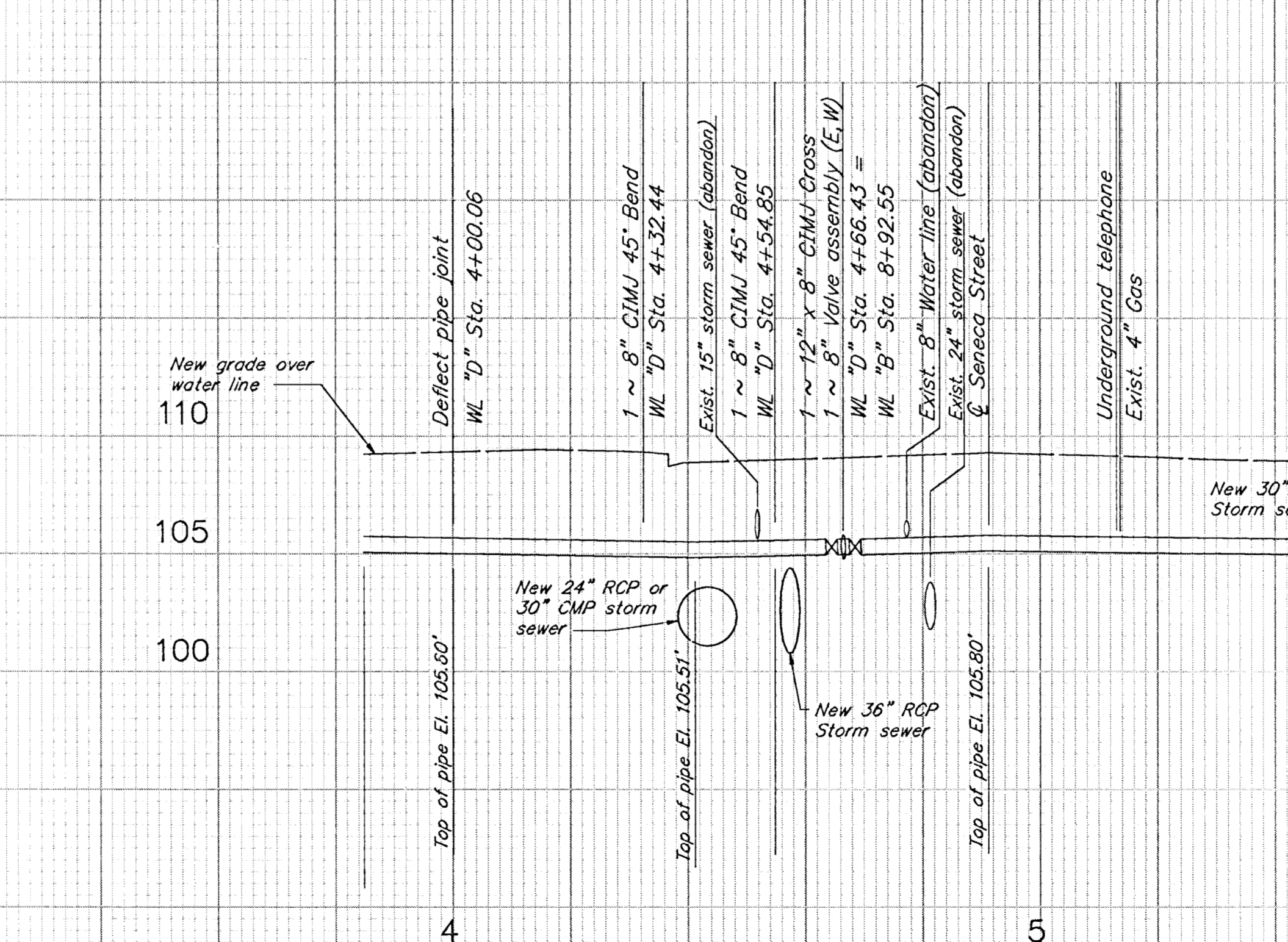
LINE "F" ~ DOUGLAS STREET WATER LINE
SEE SH 7 FOR PLAN



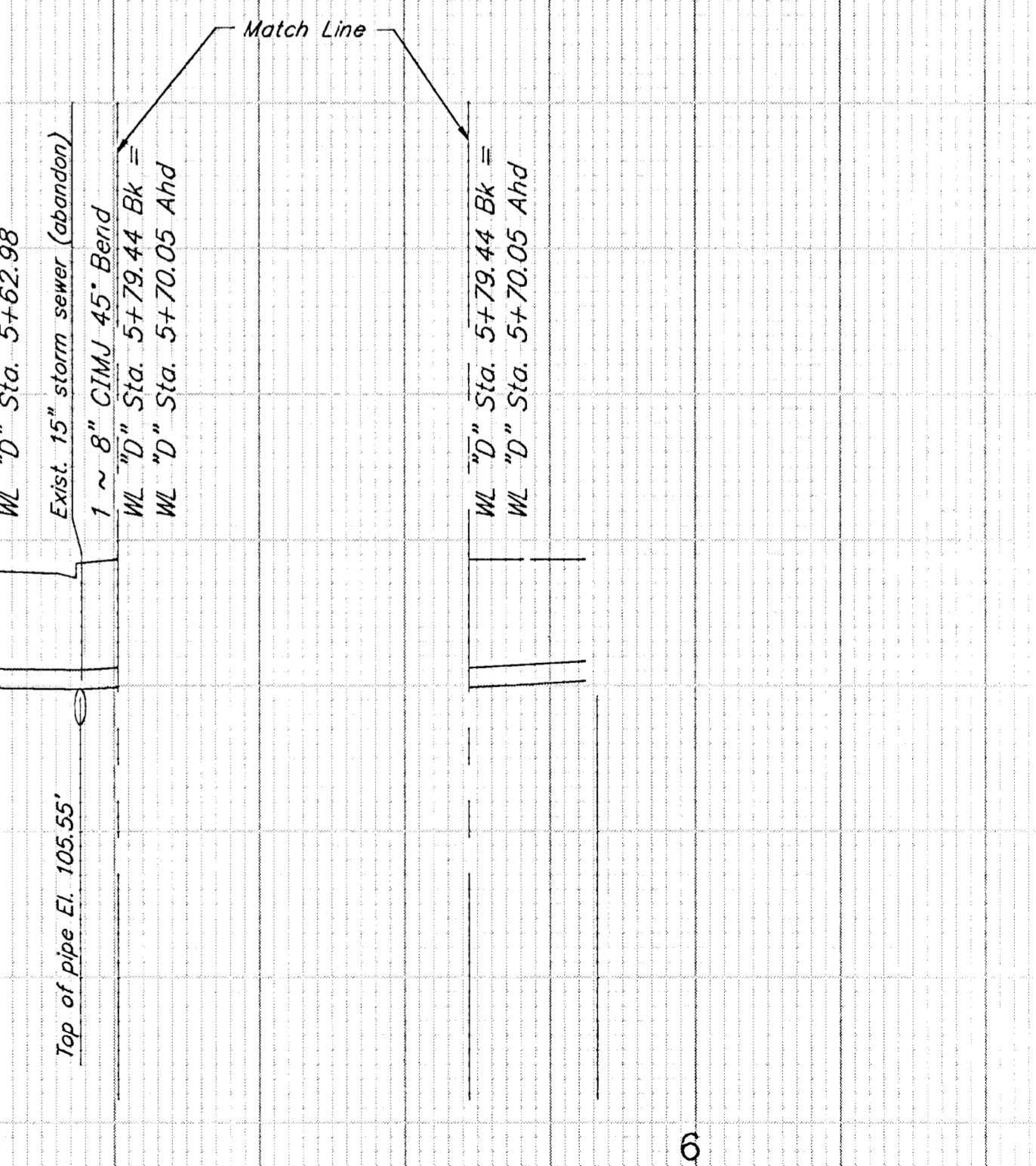
LINE "L" ~ 6" SERVICE LINE
SEE SH 3 FOR PLAN



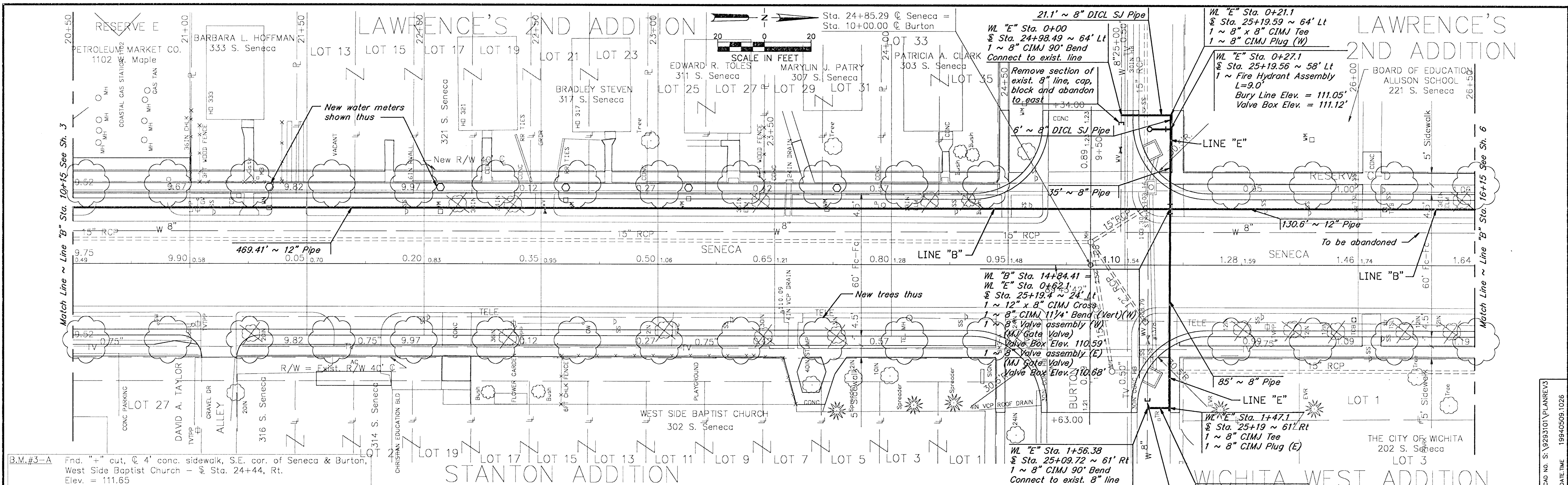
LINE "C" ~ MENTOR STREET WATER LINE
SEE SH 3 FOR PLAN

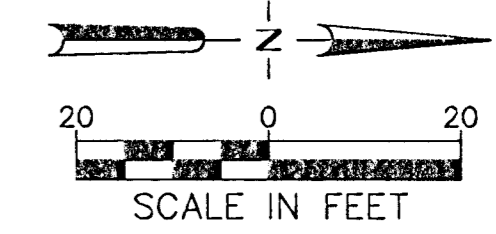
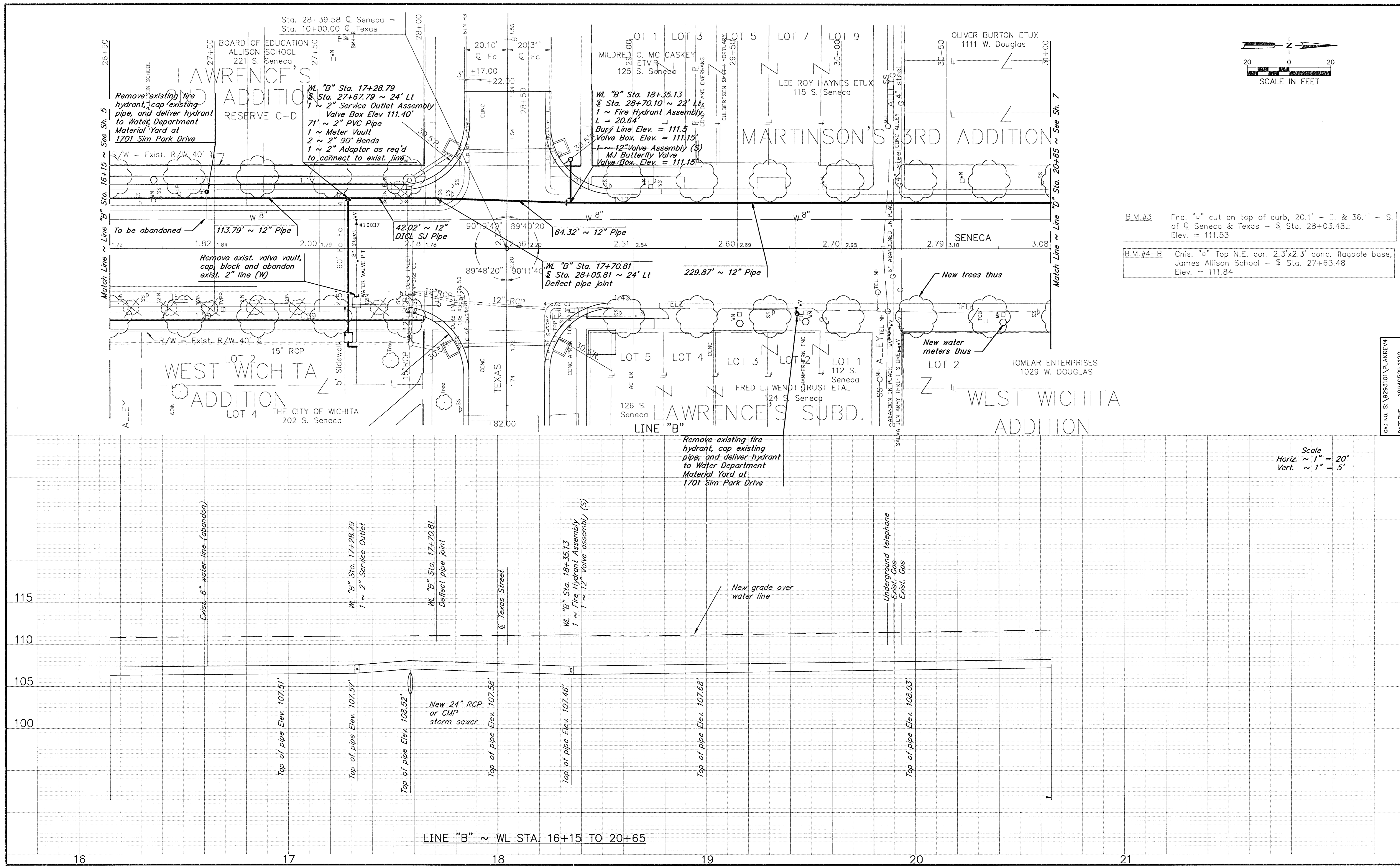


LINE "D" ~ MAPLE STREET WATER LINE STA. 3+84.89 TO 5+86.27
SEE SH 3 FOR PLAN



CAD NO. S:\9293101\W4
DATE/TIME 19940509.1004





B.M.#3 Fnd. "a" cut on top of curb, 20.1' - E. & 36.1' - S. of \odot Seneca & Texas - \S Sta. 28+03.48± Elev. = 111.53

B.M.#4-B Chis. "a" Top N.E. cor. 2.3'x2.3' conc. flagpole base, James Allison School - \S Sta. 27+63.48 Elev. = 111.84

Scale
 Horiz. ~ 1" = 20'
 Vert. ~ 1" = 5'

CAD No. S:\9293101\PLANREV4
 DATE/TIME 19940509.1120

