

	BY	DATE

Plotted on: 04-JAN-2005 12:46 \*time\*  
 dJamison Plot Queue: #queue\*  
 Plot Scale: #scale\* Pen Table: #pentable\*  
 Design Filename: K:\B29049\BridgesDec2004\Base Bid\Douglas\Drawings\d03.dgn.

STATE	PROJECT NO.	YEAR	SHEET NO.	TOTAL SHEETS
KANSAS	472-840T1	2005	B.11	

NOTES:  
 Field verify all dimensions and sizes.  
 Fabrication and workmanship shall conform to the current AREMA Manual for Railway Engineering.

All structural steel for the super-structure shall conform to ASTM A709, Grade S0T'2, unless noted otherwise.

Each fastener shall be composed of a Heavy Hex Structural Bolt, ASTM A325 Type 1; each with one circular Hardened Washer, ASTM F436 Type 1; and one Heavy Hex Nut, ASTM A563 Grade C, unless noted otherwise.

High strength bolts connecting members with sloping faces shall have hardened beveled washers, ASTM F436 Type 1, under the bolt head or nut in addition to a standard hardened washer under the turned element.

All fasteners shall be 7/8" diameter, unless noted otherwise.

All fastener holes will be 1/16" larger than the nominal fastener diameter, unless noted otherwise.

All holes through main structural members shall be drilled full-size or shall be sub-drilled 1/4" less than full diameter and reamed to full-size.

All washers shall be located under the turned element.

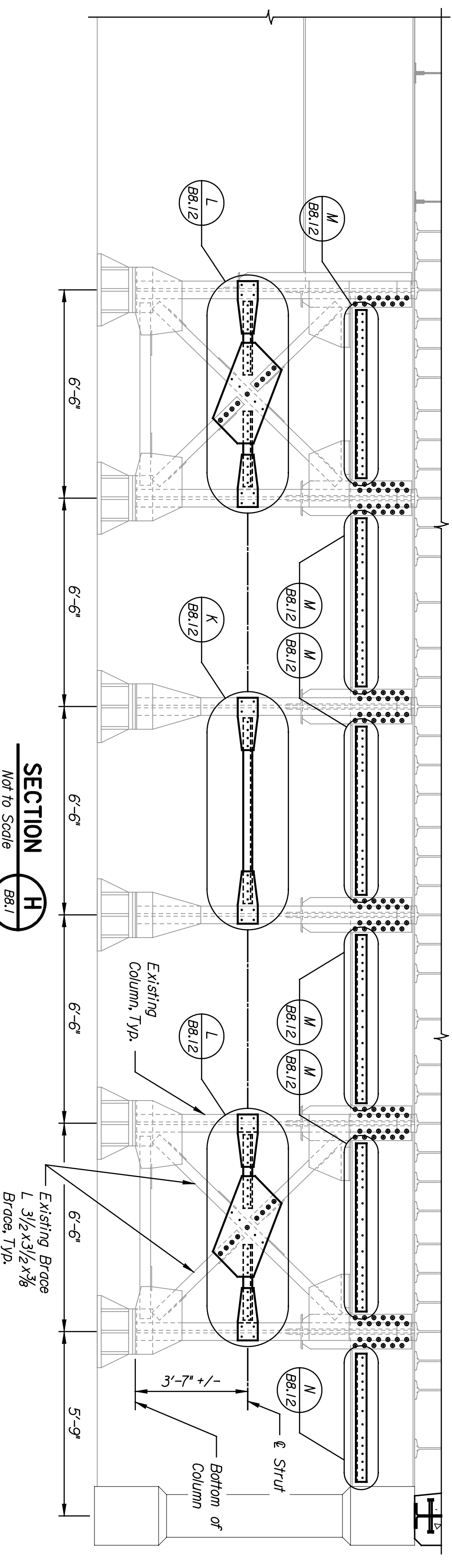
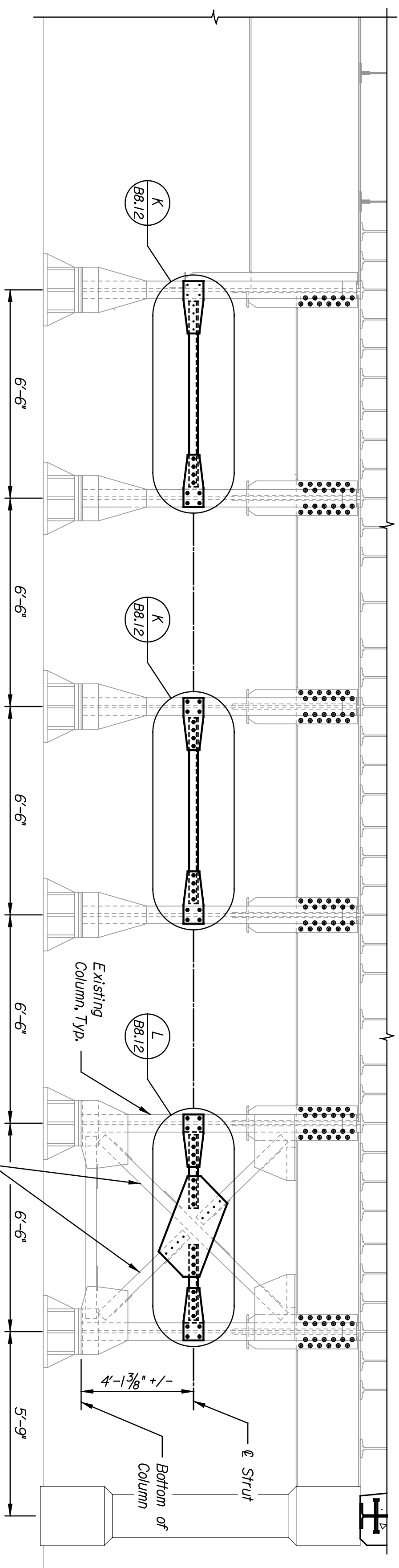
Welding shall conform to the AREMA Manual for Railway Engineering and the Bridge Welding Code, AWS D1.5M/D1.5.

The steel surface preparation shall be pressurized water spray, SSPC-1, SSPC-2 and SSPC-3 in accordance with the specifications. This surface preparation is subsidiary to the bid item Bridge Painting.

Rust Penetrating sealer, primer and top coat are in accordance with the specifications.

The top coat of paint shall match the color and finish of the existing pier.

Prior to painting, submit samples to the Engineer for approval of the color.



This sheet designed by:



ARCHITECTS ENGINEERS PLANNERS

LOCATION: PMSF BR. 201A

WICHITA, KS

LINE SEGMENT 7400

SHEET NO.	OF	SCALE AS NOTED	APP'D.	DESIGNED BY	ENR	SCALE AS NOTED	APP'D.	TRACED BY	DJL
1	1	DETAILED	DJL	QUANTITIES	DJL	TRACED	CR.	CR.	DJL
2	1	DETAILED	DJL	QUANTITIES	DJL	TRACED	CR.	CR.	DJL
3	1	DETAILED	DJL	QUANTITIES	DJL	TRACED	CR.	CR.	DJL
<b>CITY OF WICHITA</b> DOUGLAS AVENUE PIER MODIFICATIONS									
REVISIONS NO. DATE BY APP'D.									