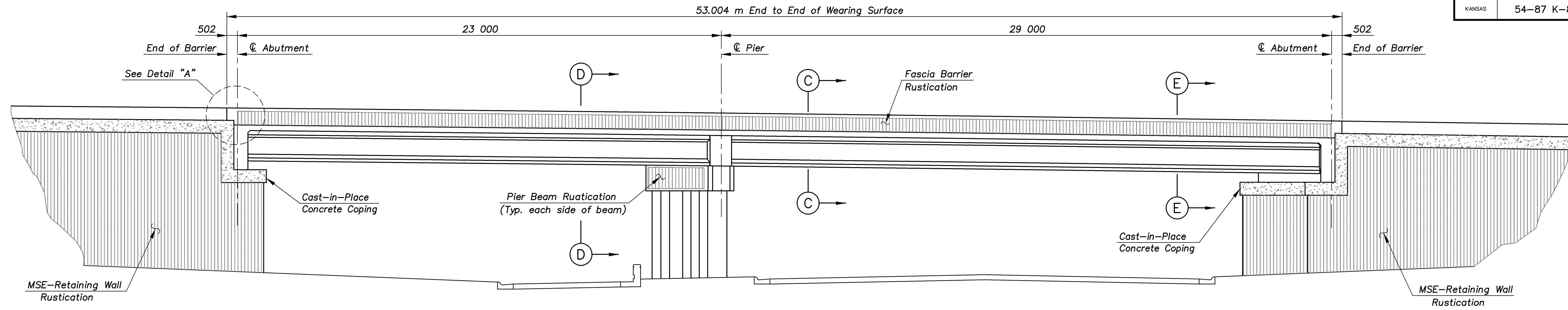
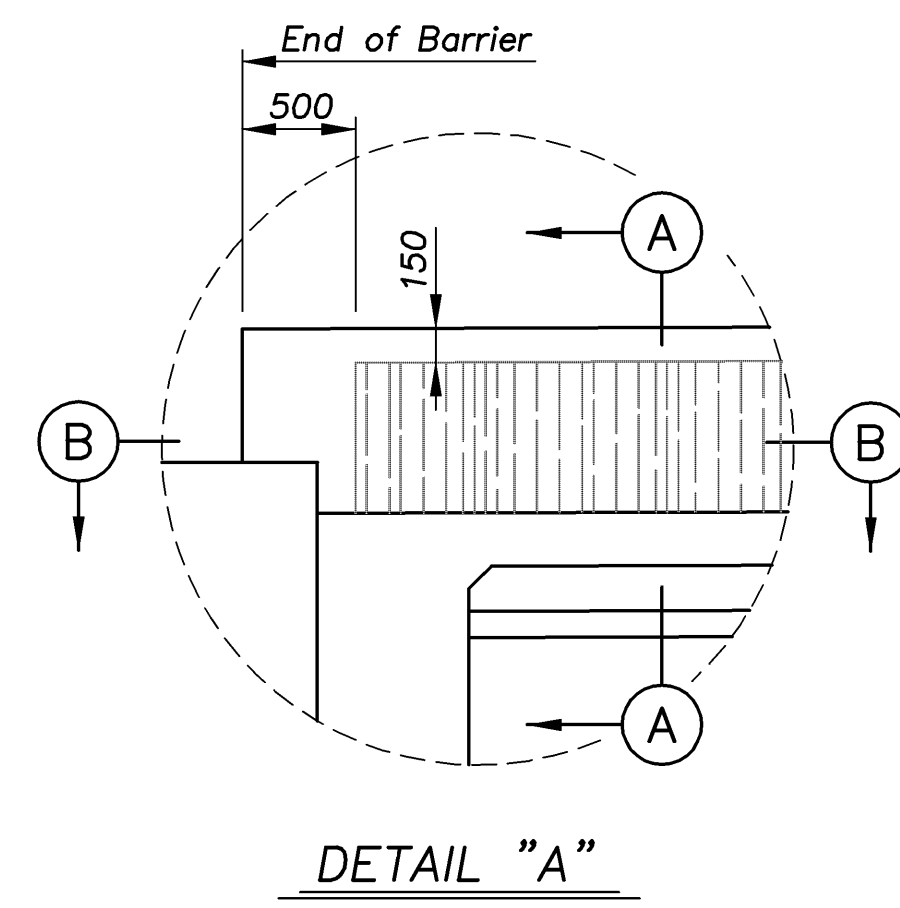


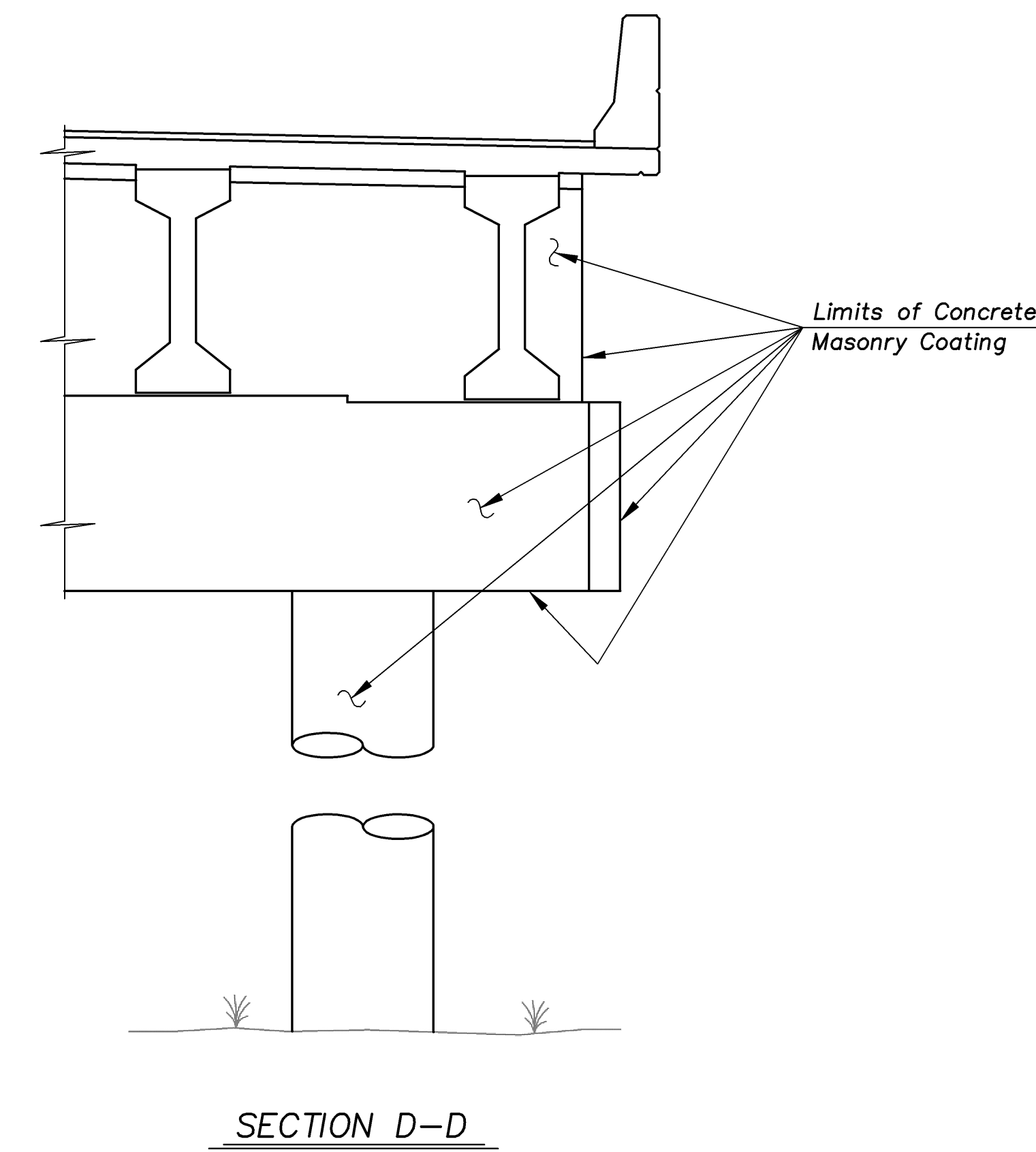
STATE	PROJECT NO.	YEAR	SHEET NO.	TOTAL SHEETS
KANSAS	54-87 K-8258-01	2007	216	556



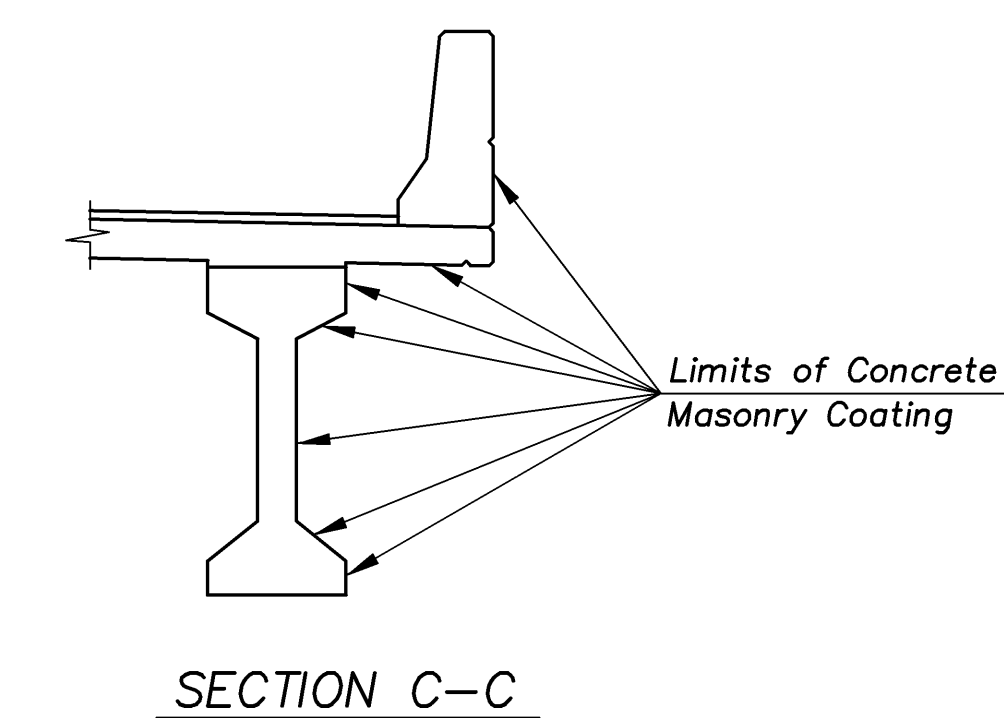
TYPICAL ELEVATION



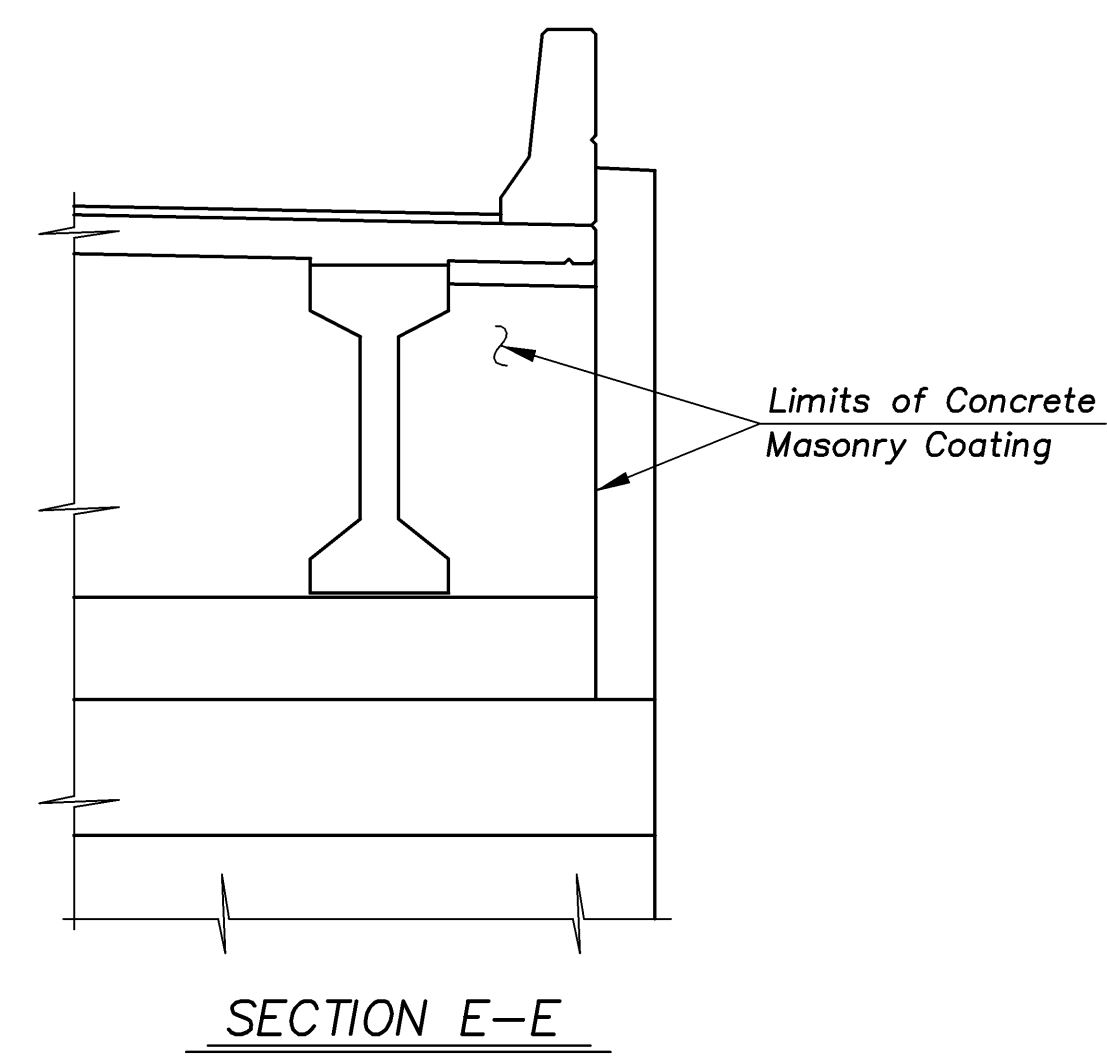
DETAIL "A"



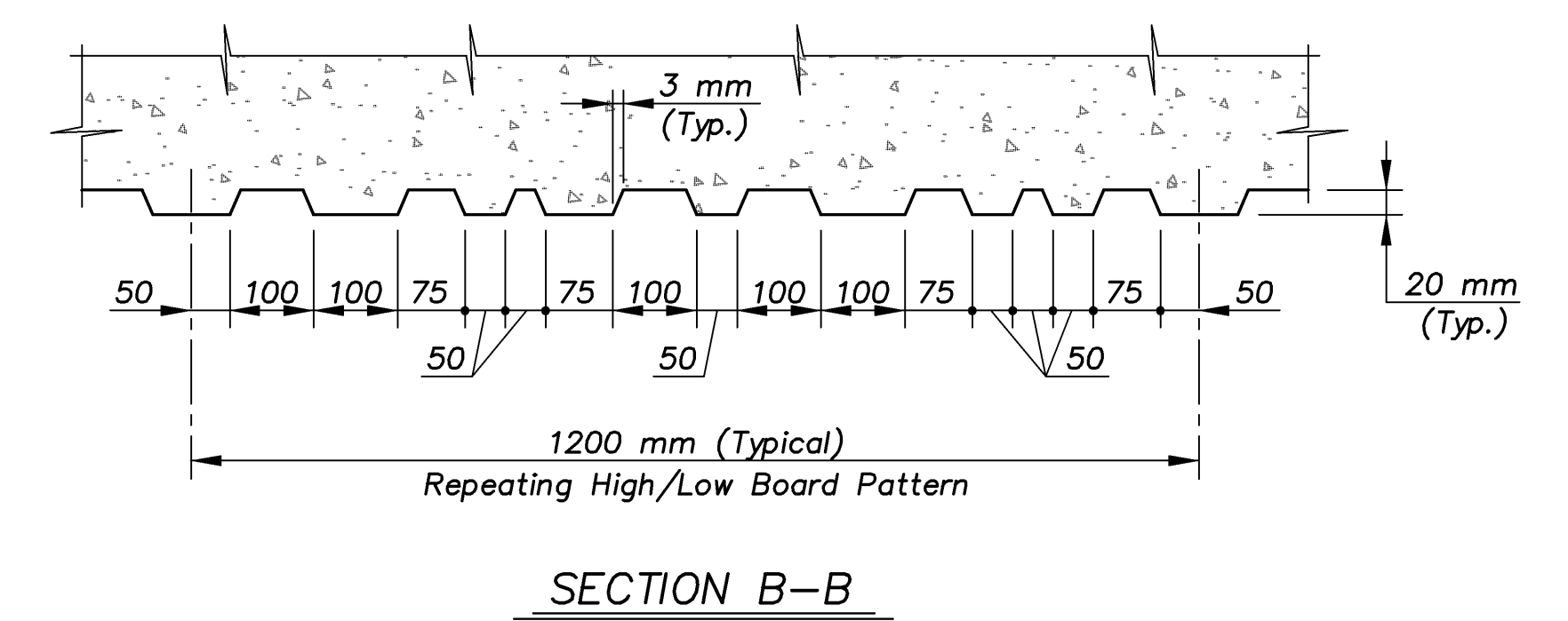
SECTION D-D



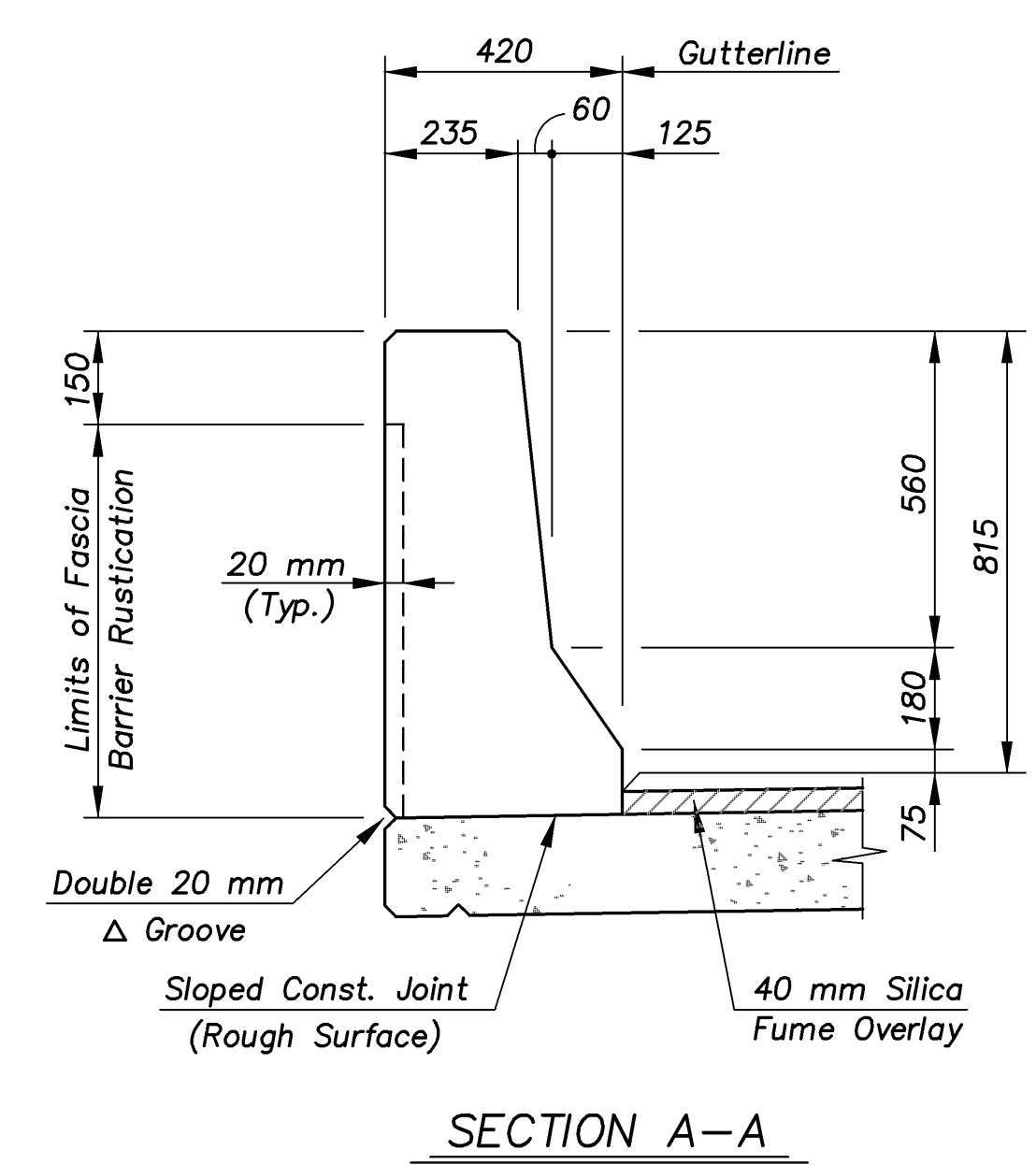
SECTION C-C



SECTION E-E



SECTION B-B



SECTION A-A

LIMITS OF CONCRETE MASONRY COATING

Concrete Masonry Coating shall be applied to all exterior concrete surfaces of the Fascia Barrier Rail, Deck, P.C. Beams, all exposed surfaces of the Pier and Abutment Diaphragms, Pier Beams (except the top) and the Pier Columns within the limits detailed on this sheet. The color of the Concrete Masonry Coating shall match Color No. 30318 (Limestone Tan) of Federal Standard 595B, unless an equal is approved by the Engineer. A non-petroleum based form release agent shall be used on formed surfaces to be coated. All labor, materials and incidentals necessary to perform this work shall not be paid for directly, but shall be considered Subsidiary to the bid item "Concrete (Grade 31) (AE)".

KANSAS DEPARTMENT OF TRANSPORTATION  
 BR. NO. 54-87-30.81(700) W.B. STA. 3+378.725  
 BR. NO. 54-87-30.82(701) E.B.  
**BARRIER RUSTICATION DETAILS**  
 KELLOGG AVENUE OVER ARMOUR ROAD  
 Proj. No. 54-87 K-8258-01 SEDGWICK COUNTY

**CFS**  
 Cook, Flatt & Strobel  
 ENGINEERS, P. A.  
 DESIGNED R.S.C. SCALE Varies  
 DETAILED T.R.G. DATE  
 QUANTITIES T.R.G. SHEET 36 OF 39

ARMOUR/RUSTICATION 1:100