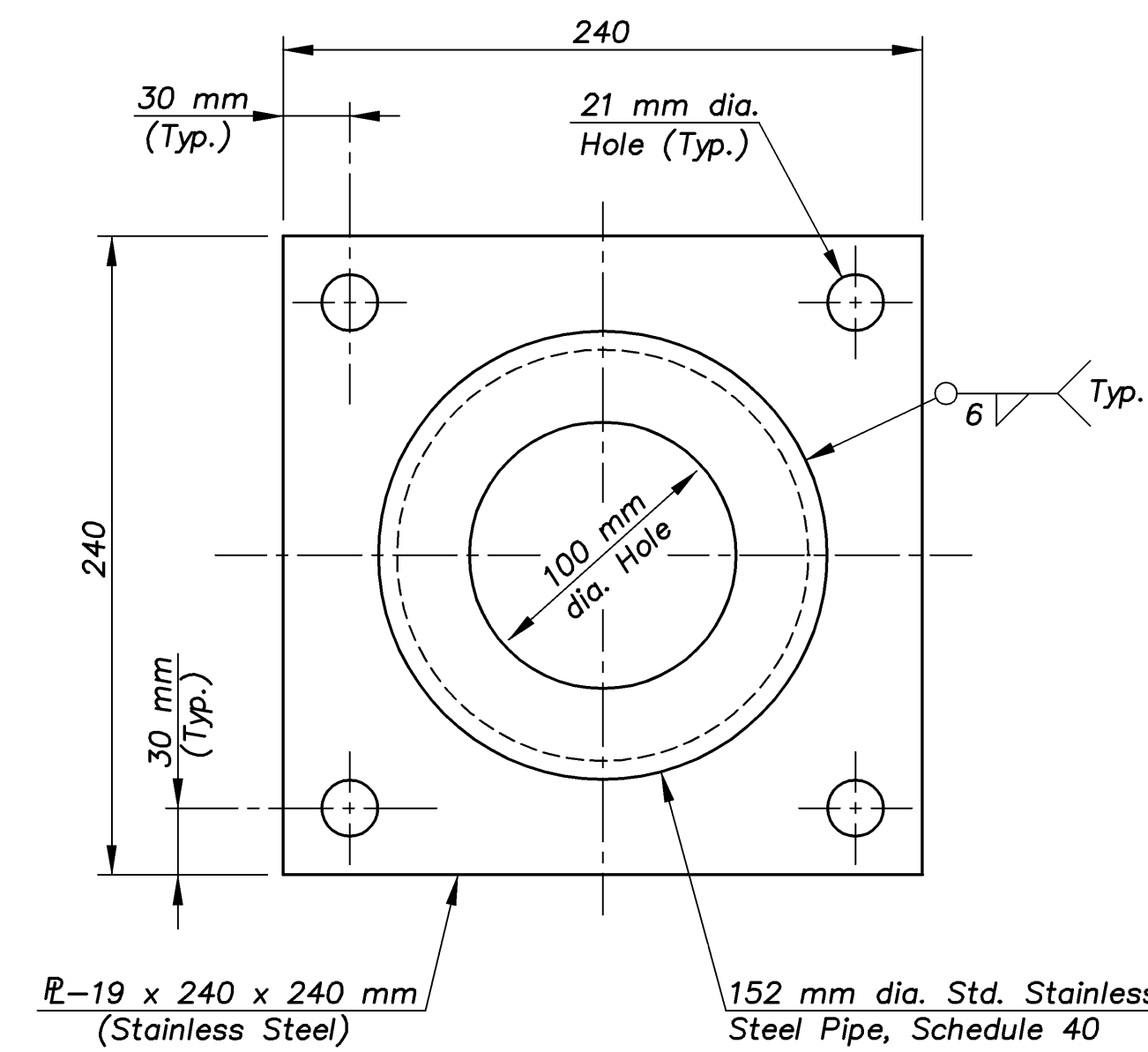
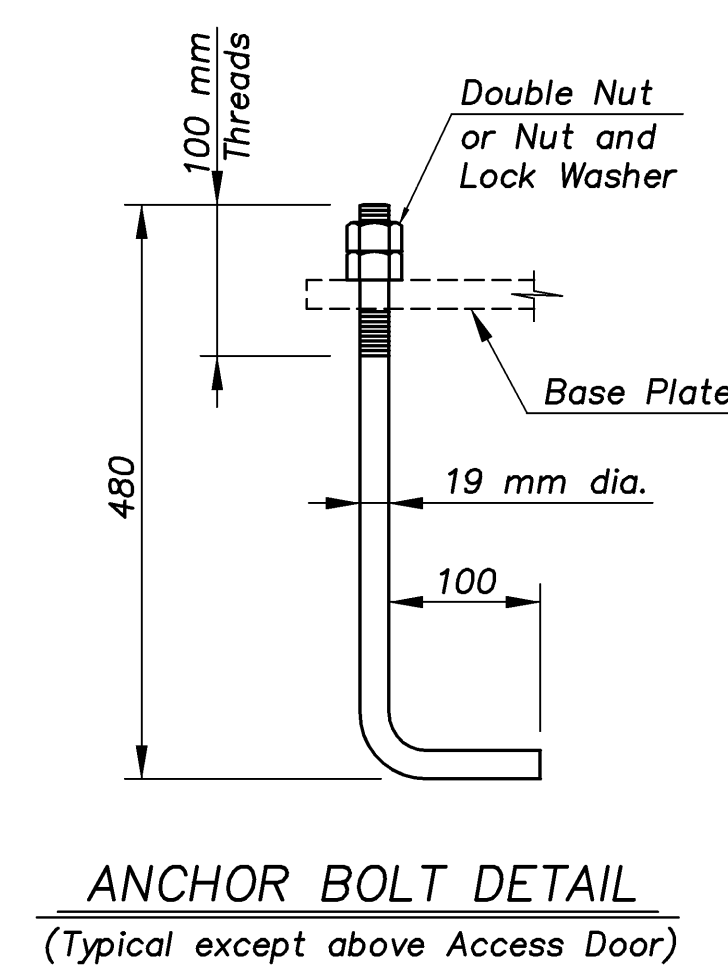


STATE	PROJECT NO.	YEAR	SHEET NO.	TOTAL SHEETS
KANSAS	54-87 K-8258-01	2007	283	556

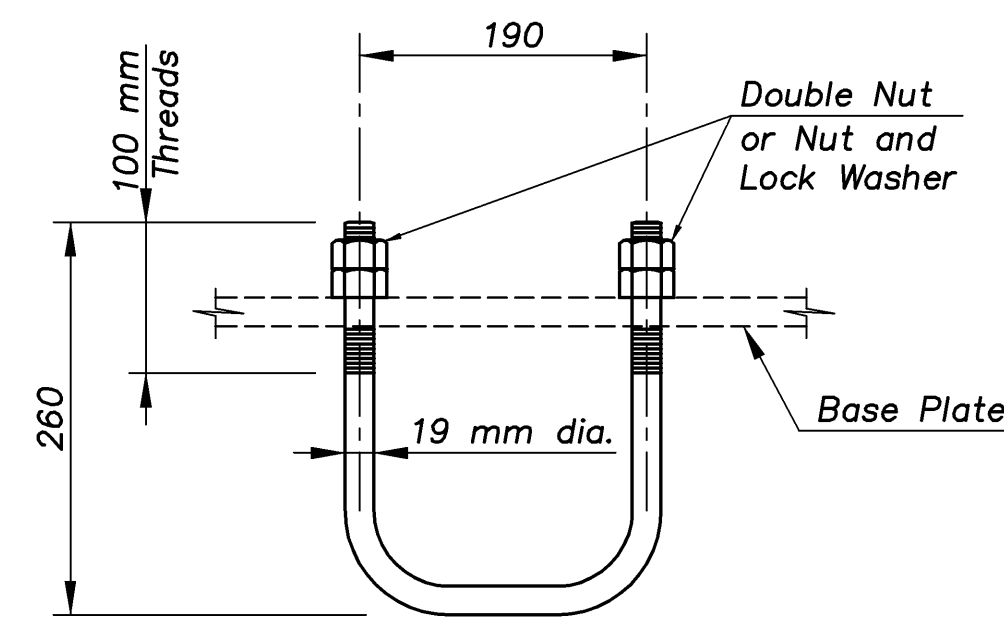
E.F. INDICATES EACH FACE.
N.F. INDICATES NEAR FACE.
F.F. INDICATES FAR FACE.



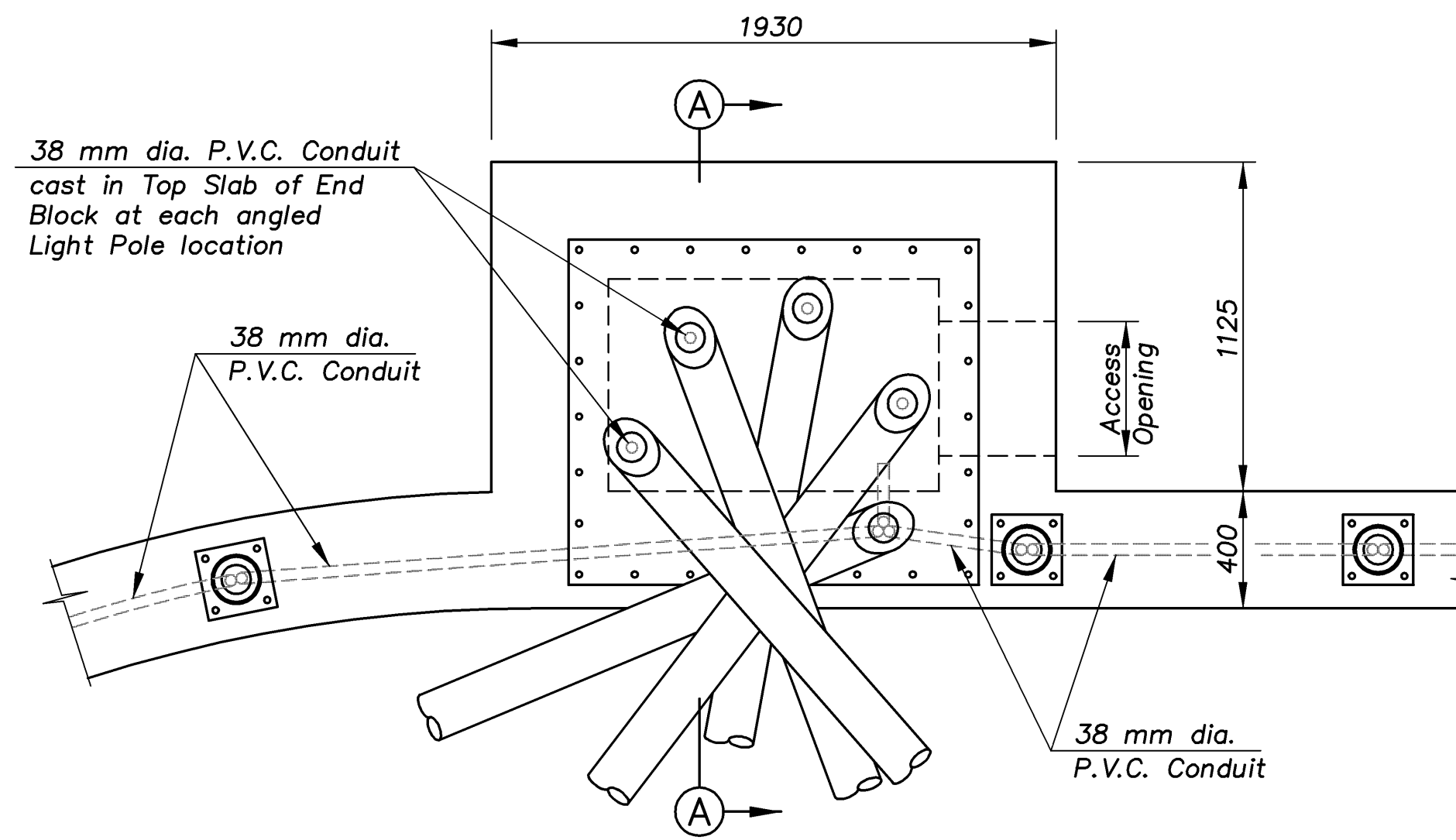
LIGHT POLE BASE PLATE DETAIL
(Typical all vertical Light Poles)



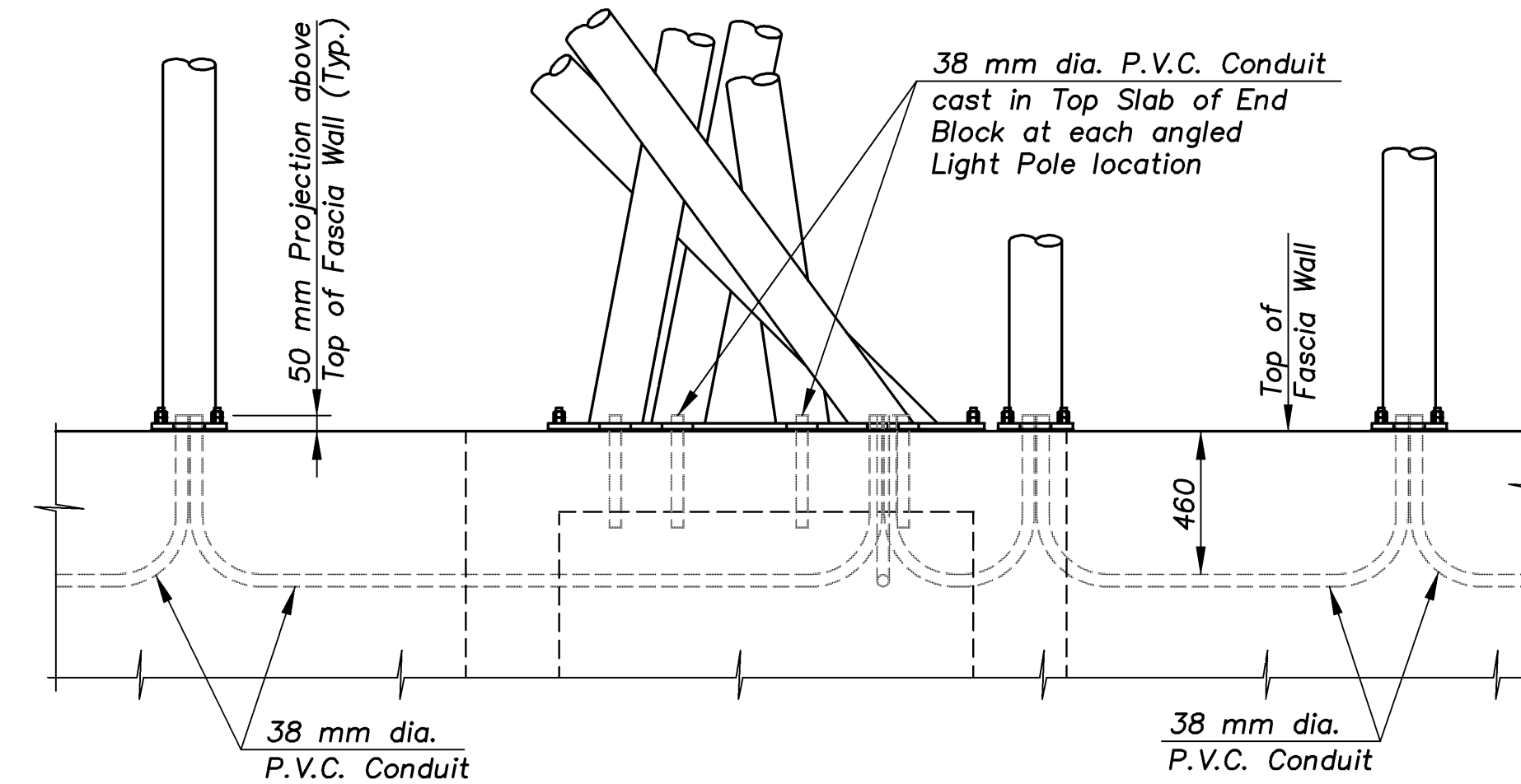
ANCHOR BOLT DETAIL
(Typical except above Access Door)



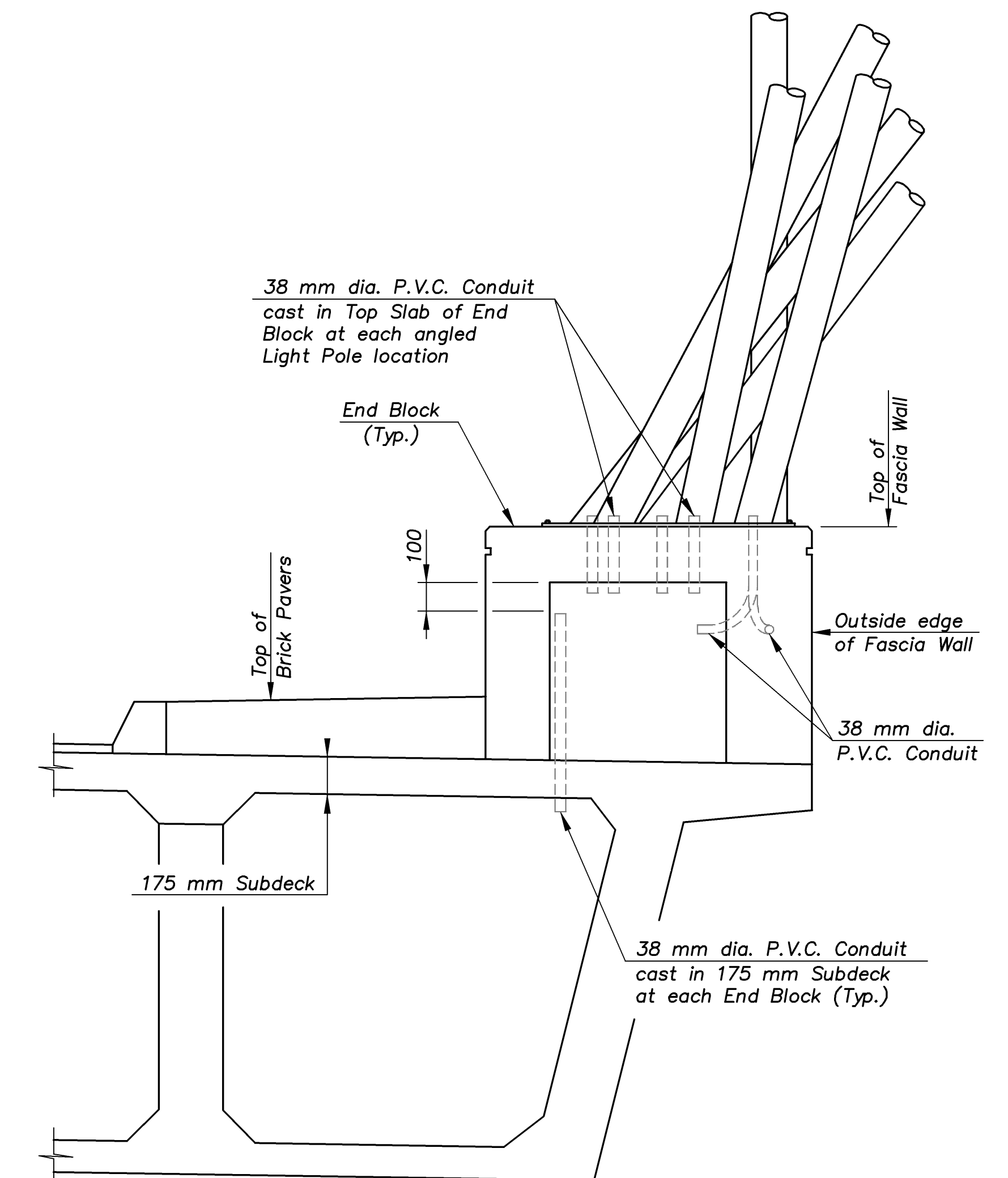
ANCHOR BOLT DETAIL
(Above Access Door Only)



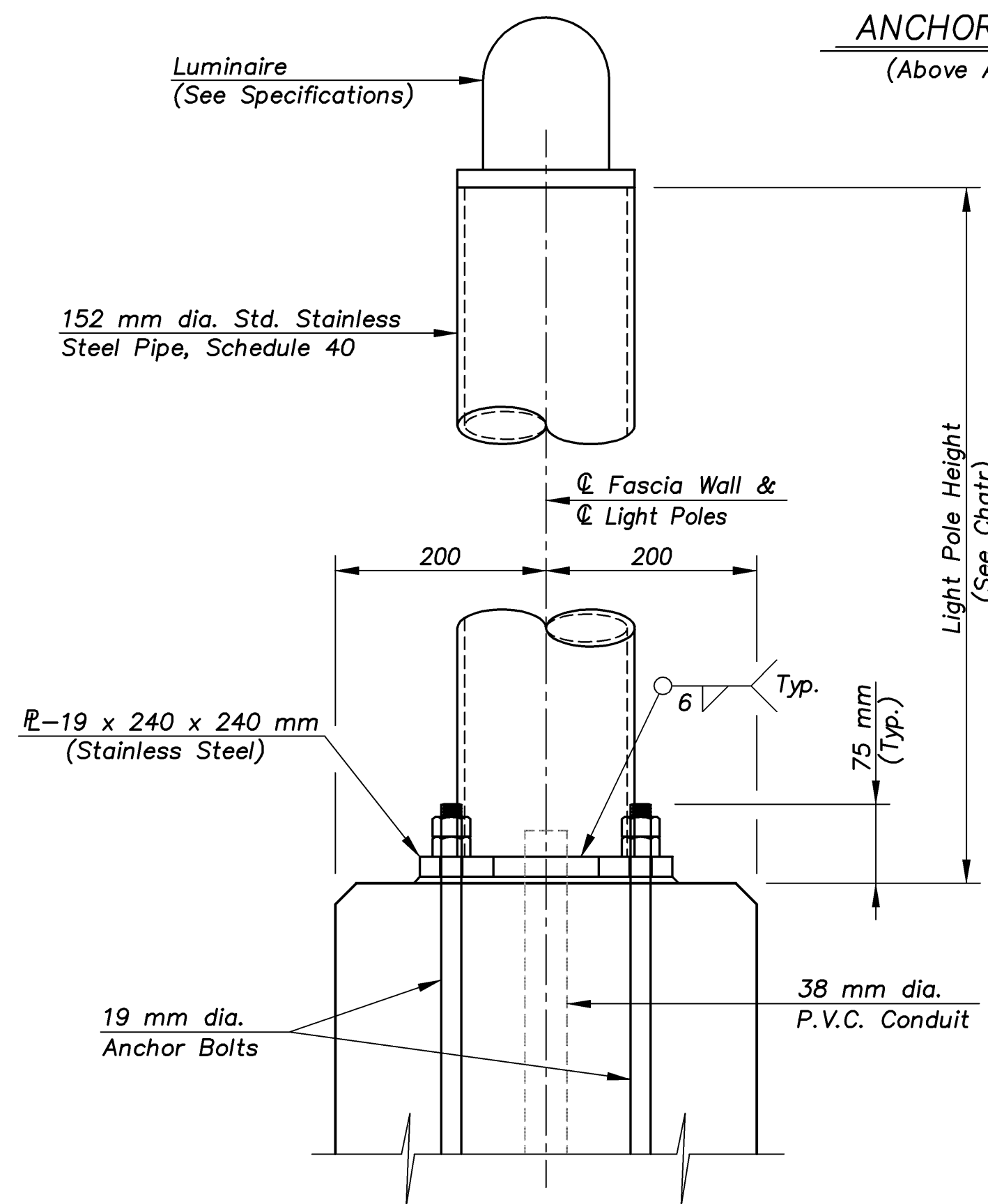
PARTIAL PLAN SHOWING CONDUIT LAYOUT



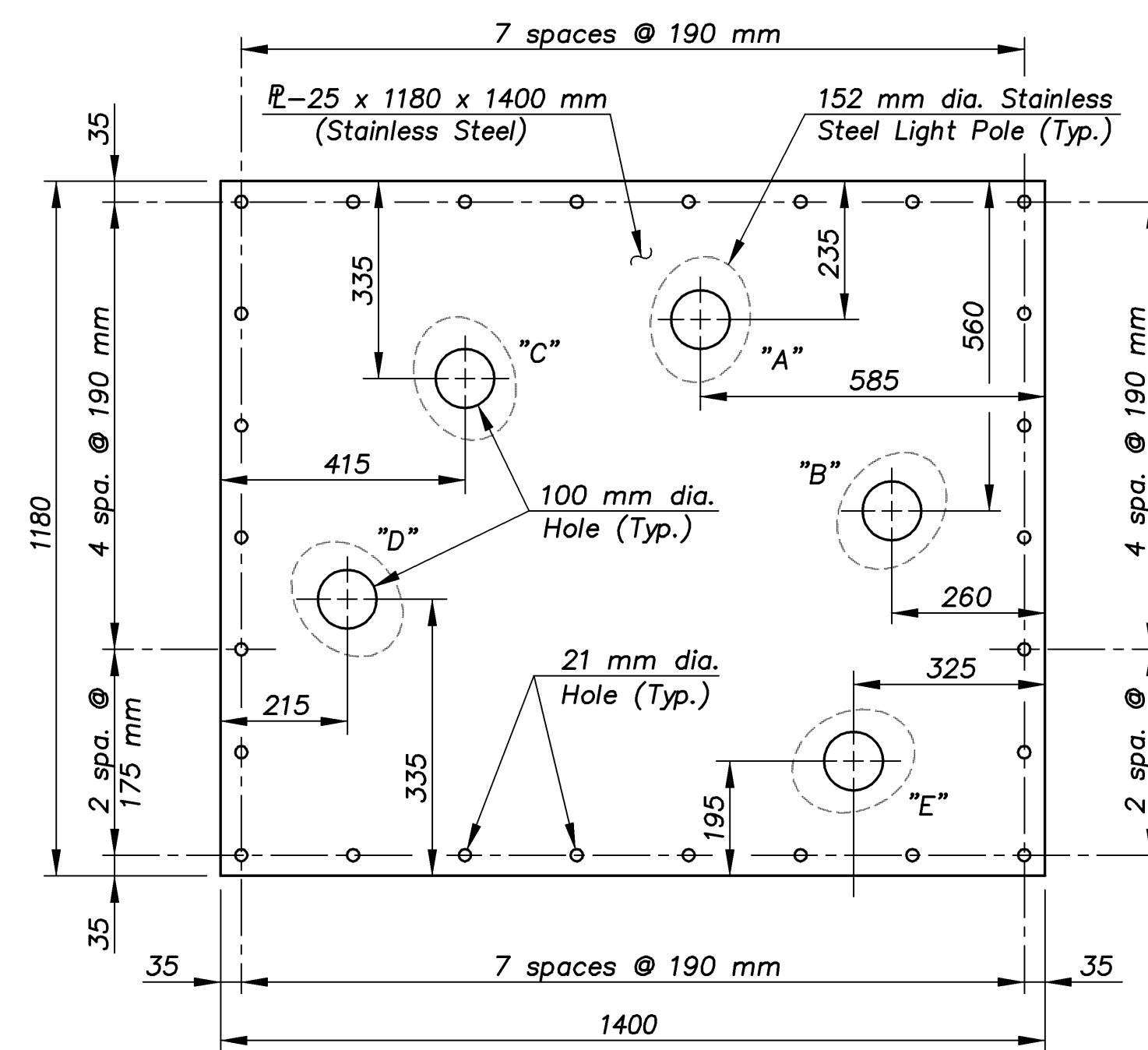
TYPICAL ELEVATION SHOWING CONDUIT



SECTION A-A



TYPICAL LIGHT POLE DETAIL
(Typical all vertical Light Poles)



LIGHT POLE BASE PLATE DETAIL
(Typical all Angled Light Poles)

BRIDGE LIGHT POLE NOTES

The light poles shall be 152 mm dia. standard stainless steel pipe conforming to ASTM A358M, Class 2, Grade 304 (146 mm I.D.) (168 mm O.D.) Material for base plates shall conform to ASTM A167M or ASTM A240M, Type 302, 304 or 305. All anchor bolts, nuts and washers shall be stainless steel. All electrical conduit and necessary fittings shall be rigid p.v.c. conduit.

The (vertical) light poles shall be centered on the fascia wall with base plates set normal to outside of wall and/or on radial lines as detailed. Stainless steel shims may be used between the concrete and the base plate of all light poles.

All material, labor, conduit, shims and the installation shall be paid for under bid item "Electrical Lighting System", Lump Sum. The Contractor shall submit shop drawings to the Engineer for approval prior to fabrication of the bridge light poles.

KANSAS DEPARTMENT OF TRANSPORTATION	
BR. NO. 54-87-31.12(702)	STA. 3+877.518
ALTERNATE BRIDGE HANDRAIL DETAILS	
ROCK ROAD OVER KELLOGG AVENUE	
Proj. No. 54-87 K-8258-01	SEDGWICK COUNTY

CFS
Cook, Flatt & Strobel
ENGINEERS, P. A.

DESIGNED	R.S.C.	SCALE	Varies
DETAILED	T.R.G.	DATE	
QUANTITIES	T.R.G.	SHEET	37 OF 41

ROCK/ALTERNATE 1:20