

Ref. Ctr. Cor. Sec. 30-T27S-R2E = Sta. 10+00
 Fnd. 1/2" Iron Pipe & 40d Nail
 1. "x" Cut Cor. Sdwk. 68.92' NE
 2. "x" Cut Cor. Sdwk. 68.80' SE
 3. "x" Cut Cor. Sdwk. 56.03' SW
 4. "+ " Cut Top Curb 41.10' NW
 5. In C E-W Asph. Rd.
 6. C S. Bnd. Lane Governour 14.0' W

Ref. P.O.T. @ Sta. 15+17.43
 Set 1/2" Rebar @ P.O.T.
 1. "x" Cut Top Curb NE ECR Dr. 20.29' SSE
 2. "x" Cut Top Curb NW ECR Dr. 26.78' SW
 3. "x" Cut Top Curb SW ECR Dr. 27.09' NE
 N 1680986.042 E 1673780.499

Willie A. Hathaway, ETUX
 870 S. Watson Ln.
 C 23067

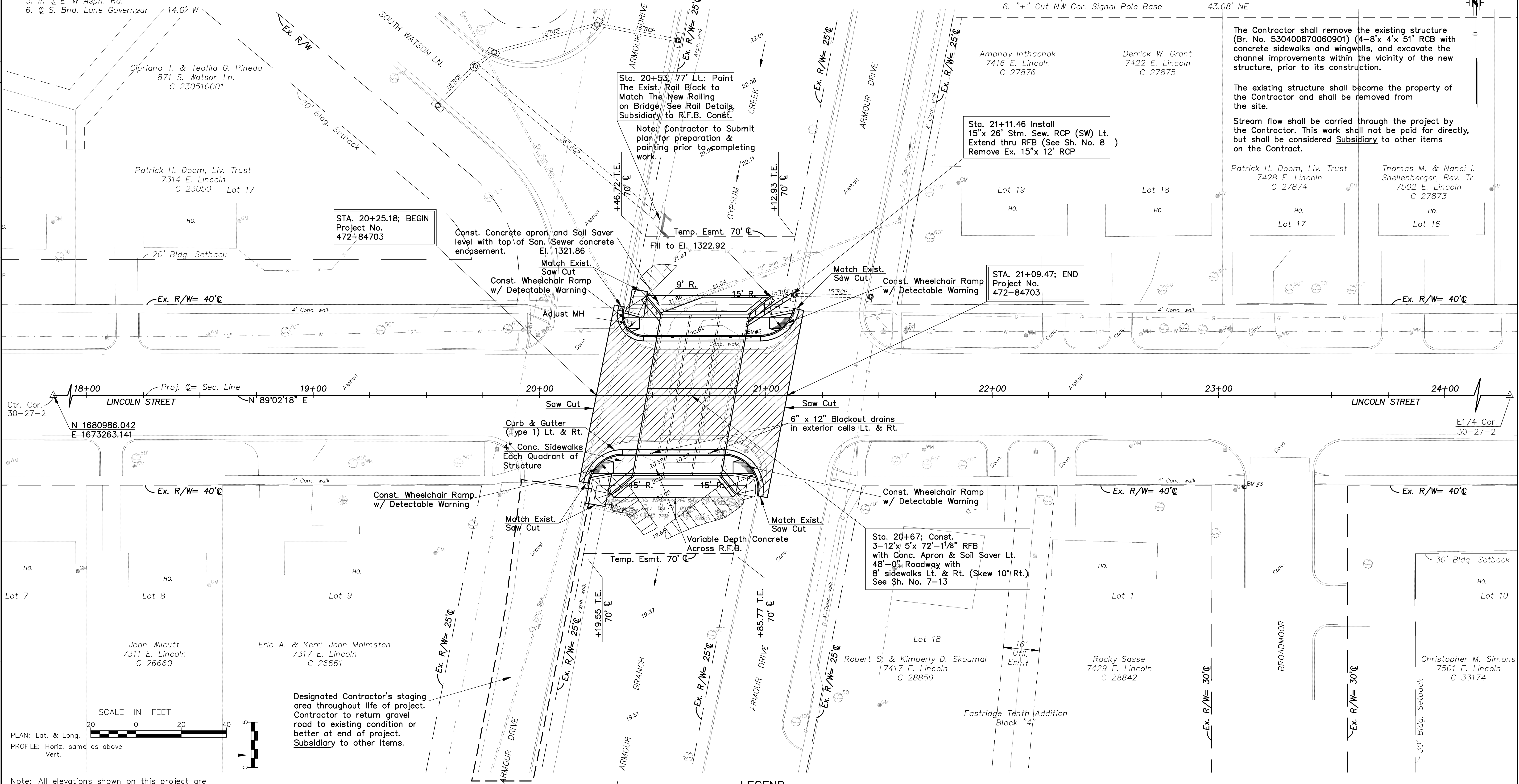
Ref. P.O.T. @ Sta. 25+42.95
 Set 1/2" Rebar @ P.O.T.
 1. "x" Cut Top Curb NW ECR 19.96' SSW
 2. "x" Cut Top Curb NE ECR 36.52' ESE
 3. "x" Cut Top Curb SE ECR 32.62' ENE
 N 1681011.823 E 1674805.874

Ref. E 1/4 Cor. Sec. 30-T27S-R2E = Sta. 36+54.75
 Fnd. 1/2" Iron Bar in Drill Hole In Conc.
 1. In C N-S Conc. Rd. (Rock Rd.)
 2. In Line w/Asph. Rd. to W. (Lincoln Rd.)
 3. "x" Cut Top Curb
 4. "x" Cut Top Curb
 5. "x" Cut Top Curb
 6. "+ " Cut NW Cor. Signal Pole Base
 68.10' NW
 63.50' SW
 32.75' E
 43.08' NE

STATE	PROJECT NO.	YEAR	SHEET NO.	TOTAL SHEETS
KANSAS	472-84703	2010	4	36

DATE	BY	REFERENCE NOTED	REFERENCE CHECKED

SEC. 30 T27S R2E



Sta. 20+53, 77' Lt.: Paint The Exist. Rail Block to Match The New Railing on Bridge, See Rail Details, Subsidiary to R.F.B. Const.
 Note: Contractor to Submit plan for preparation & painting prior to completing work.

Sta. 21+11.46 Install 15"x 26' Stm. Sew. RCP (SW) Lt. Extend thru RFB (See Sh. No. 8) Remove Ex. 15"x 12" RCP

Sta. 21+09.47; END Project No. 472-84703

Sta. 20+67; Const. 3-12' x 5' x 72'-1/8" RFB with Conc. Apron & Soil Saver Lt. 48'-0" Roadway with 8' sidewalks Lt. & Rt. (Skew 10' Rt.) See Sh. No. 7-13

Designated Contractor's staging area throughout life of project. Contractor to return gravel road to existing condition or better at end of project. Subsidiary to other items.

Note: The Contr. shall construct Slope Protection (Riprap Stone)(24" Light Stone) on the down stream side as shown. See Sh. No. 7 Total = 60 Sq. Yds.

LEGEND
 [Hatched Box] Removal of Existing Asphalt Surfacing, Curb & Gutter and sidewalks (Rock Excavation)

B.M. #1- "a" Cut Top Curb N. End Curb @ SW W. Side of Drive, 36.0' Lt. @ Sta. 16+00 Elev. 1335.21

B.M. #2- COW-BM Brass Cap Top NE Wingwall of 4-8'x4' RCB Stamped (City of Wichita Bench Mark 1325.56), 27.0' Lt. @ Sta. 20+90 Elev. 1326.29

CFS Cook, Flatt & Strobel ENGINEERS, P.A.

CITY OF WICHITA
 PLAN
 Lincoln Street Bridge at Armour Drive
 STA. 18+00 to STA. 24+00
 City of Wichita Proj. No. 472-84703

J:\2008Proj\08566\DWGS\08566T.dwg 7/20/2010 7:28am Imartin
 SCALE
 PLAN: Lat. & Long.
 PROFILE: Horiz. same as above
 Vert. as above

