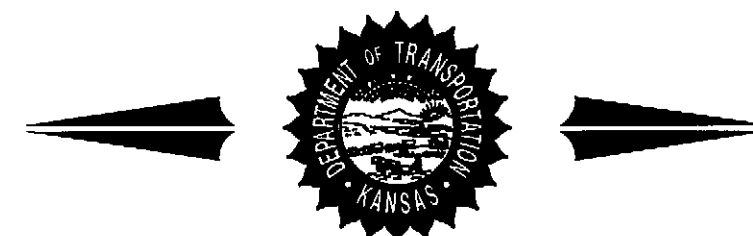


DEPARTMENT OF TRANSPORTATION



**PLAN AND PROFILE OF PROPOSED
119TH STREET W. - US-54 TO MAPLE STREET
KDOT PROJECT NO. 87N-0388-01
CITY OF WICHITA PROJECT NO. 472-84850 O.C.A. NO. 707011
FEDERAL AID PROJECT NO. STP-N 038(801)
WATERLINE IMPROVEMENTS
(NON-PARTICIPATING)
CITY OF WICHITA PROJECT NO. 448-90493 O.C.A. NO. 635696
FEDERAL AID PROJECT NO. STP-N 038(801)
SEDGWICK COUNTY**

STATE	PROJECT NO.	YEAR	SHEET NO.	TOTAL SHEETS
KANSAS	87 N-0388-01	2010	1	152
FEDERAL AID PROJ. NO. STP-N038(801)				

GRADING & SURFACING 707011
SEEDING & SODDING 635696
 SIGNING
 PAVEMENT MARKING
 TRAFFIC SIGNALIZATION

GENERAL NOTES

ALL ELEVATIONS SHOWN ARE NGVD29 DATUM.
 THE CONTRACTOR SHALL NOT START WORK ON THE PROJECT UNTIL THE PROJECT INSPECTOR IS ASSIGNED TO THE PROJECT AND IS PRESENT ON THE SITE. ANY WORK DONE WITHOUT INSPECTION WILL BE REQUIRED TO BE UNCOVERED FOR INSPECTION.
 ALL CONSTRUCTION WORK AND MATERIAL IN THIS PROJECT SHALL COMPLY WITH CITY OF WICHITA STANDARD SPECIFICATIONS FOR THE CONSTRUCTION OF CITY PROJECTS UNLESS OTHERWISE NOTED IN THE PLANS OR SPECIAL PROVISIONS.
 UNDERGROUND UTILITY SERVICE LINES AND OVERHEAD UTILITY POLE LINES ARE TO BE ADJUSTED AS NECESSARY BY OTHERS PRIOR TO CONSTRUCTION UNLESS THE PLANS SPECIFICALLY CALL FOR THEIR ADJUSTMENT BY THE CONTRACTOR. EXISTING UTILITIES AND THEIR LOCATION, AS SHOWN ON THE PLANS, REPRESENT THE BEST INFORMATION OBTAINABLE FOR DESIGN. LOCATION INFORMATION HAS BEEN OBTAINED FROM THE VARIOUS UTILITY COMPANIES AND IS EITHER FROM COMPANY RECORD DRAWINGS OR COMPANY PROVIDED FIELD LOCATIONS. THE CONTRACTOR WILL BE REQUIRED TO WORK AROUND EXISTING UTILITIES WITHIN THE RIGHT-OF-WAY WHICH DO NOT CONFLICT WITH PROPOSED CONSTRUCTION.
 TREES AND SHRUBS IN PUBLIC RIGHT-OF-WAY WHICH ARE IN DIRECT CONFLICT WITH PROPOSED NEW CONSTRUCTION SHALL BE REMOVED BY THE CONTRACTOR WITH THE ENGINEER'S APPROVAL. TREES AND SHRUBS WHICH ARE NOT IN DIRECT CONFLICT WITH PROPOSED NEW CONSTRUCTION SHALL BE SAVED AND PROTECTED FROM DAMAGE.
 RUBBLE FROM THE REMOVAL OF MISCELLANEOUS STRUCTURES SHALL BE DISPOSED OF ON SITES TO BE PROVIDED BY THE CONTRACTOR AND APPROVED AS NOTED BELOW.
 ALL DISPOSAL SITES MUST BE APPROVED BY THE KANSAS DEPARTMENT OF HEALTH AND ENVIRONMENT. MATERIAL EITHER STOCKPILED OR DISPOSED OF IN A FLOOD PLAIN WOULD REQUIRE A KANSAS STATE BOARD OF AGRICULTURE PERMIT. ANY MATERIAL DUMPED IN WATERS OF THE UNITED STATES OR WETLANDS IS SUBJECT TO U.S. CORPS OF ENGINEERS PERMITTING REGULATIONS. ANY MATERIAL BURIED OR STOCKPILED BEYOND APPROVED CONSTRUCTION LIMITS WOULD REQUIRE ADDITIONAL ARCHEOLOGICAL INVESTIGATIONS UNLESS BURIED IN A PREVIOUSLY APPROVED BORROW LOCATION.
 CONTRACTOR SHALL SATISFY HIMSELF OF SURFACE AND SUBSURFACE CONDITIONS PRIOR TO BIDDING.
 FIELD LOCATE ALL EXISTING UTILITIES PRIOR TO BEGINNING ANY EXCAVATION WORK. CONTACT THE KANSAS ONE-CALL SYSTEM AT 316-687-2470 AT LEAST 48 HOURS IN ADVANCE TO REQUEST FIELD LOCATES. FOR UTILITIES THAT ARE NOT MEMBERS OF THE KANSAS ONE-CALL SYSTEM, CONTACT THOSE COMPANIES DIRECTLY. UTILITY LOCATES FOR CITY OF WICHITA OWNED UTILITIES MUST BE REQUESTED VIA THE INTERNET AT WWW.WICHITA.GOV/LOCATE.

CONTRACTOR IS RESPONSIBLE FOR PRESERVING EXISTING PROPERTY IRONS. RE-ESTABLISH ANY EXISTING PROPERTY IRONS WHICH ARE DAMAGED OR DESTROYED BY CONSTRUCTION OPERATIONS, OR WHICH ARE COVERED BY 12" OR MORE OF FILL MATERIAL BY THIS PROJECT. SUCH IRONS SHALL BE RE-ESTABLISHED BY A LICENSED LAND SURVEYOR IN ACCORDANCE WITH STATE LAWS AND AT NO ADDITIONAL COST TO THE CITY.
 THE WATER DEPARTMENT SHALL FIELD LOCATE WATER VALVES ONE TIME DURING CONSTRUCTION WHEN REQUESTED BY THE CONTRACTOR. IT SHALL BE THE CONTRACTOR'S RESPONSIBILITY TO PRESERVE SUCH FIELD LOCATIONS DURING THE CONSTRUCTION PROCESS. WATER VALVES, WATER METER BOXES OR FIRE HYDRANTS DAMAGED DURING CONSTRUCTION SHALL BE REPAIRED BY THE CONTRACTOR AT HIS OWN EXPENSE.
 WATER VALVES, METERS AND FIRE HYDRANTS SHALL BE ADJUSTED BY THE CONTRACTOR TO MEET FINAL GRADES, AS DIRECTED BY THE ENGINEER.
 THE CONTRACTOR SHALL REMOVE EXISTING ROAD SIGNS THAT INTERFERE WITH CONSTRUCTION. SIGNS DAMAGED THRU NEGLIGENCE OF THE CONTRACTOR SHALL BE REPLACED BY THE CONTRACTOR AT NO COST TO THE CITY. THE CONTRACTOR SHALL STOCKPILE THE SIGNS ALONG THE R/W (AT A CENTRAL LOCATION) FOR REMOVAL BY CITY FORCES.
 ALL EXISTING PAVEMENT AND CURB AND GUTTER WITHIN THE CONSTRUCTION LIMITS SHALL BE SAW CUT, FULL DEPTH, TO THE NEAT LINES SHOWN ON THE PLANS, OR TO THE NEAREST JOINT, AND REMOVED, UNLESS OTHERWISE NOTED. SAW CUTTING SHALL BE SUBSIDIARY TO THE BID ITEM "CONCRETE AND/OR ASPHALT PAVEMENT REMOVED".
 ALL RCB, STORMWATER SEWER AND WATERLINE EXCAVATION UNDER PROPOSED PAVEMENT SHALL BE SAND FILLED AND FLUSHED (JETTED AND VIBRATED) WITH WATER PER REQUIREMENTS LISTED IN THE STANDARD SPECIFICATIONS FOR THE CITY OF WICHITA, UNLESS FLOWABLE FILL OR OTHER IMPROVED BACKFILL MATERIAL IS OTHERWISE SPECIFIED. THE SAND FILL SHALL BE BROUGHT UP UNIFORMLY TO AN ELEVATION 12 INCHES ABOVE THE TOP OF THE PIPE OR 2 FEET BELOW THE BOTTOM OF PROPOSED PAVEMENT, WHICHEVER IS HIGHER. ALL COSTS FOR SAND FILLING AND FLUSHING SHALL BE INCLUDED IN THE UNIT PRICE BID FOR "FILL, SAND (FLUSHED AND VIBRATED)". THIS ITEM SHALL BE PAID FOR AT THE UNIT PRICE BID PER LINEAR FOOT OF TRENCH FILLED REGARDLESS OF THE TRENCH DEPTH AND/OR PIPE SIZE UNLESS INDICATED OTHERWISE BY THE PLANS OR CONTRACT.
 ALL LABOR, MATERIALS, AND EQUIPMENT NECESSARY TO MAKE CONNECTIONS TO EXISTING PIPE OR EXISTING SMALL STRUCTURES SHALL NOT BE PAID FOR DIRECTLY, BUT SHALL BE SUBSIDIARY TO OTHER ITEMS OF THE CONTRACT.

PLANS PREPARED BY :



APPROVED - DATE 09-02-10

 JAMES L. ARMOUR, P.E. CITY ENGINEER
 CITY OF WICHITA, SEDGWICK COUNTY, KANSAS
 CITY NO. 472-84850

INDEX OF SHEETS

1. Title Sheet and General Notes
- 2.-3. Typical Sections
- 4.-12. 119th St. Road Plans
- 13.-18. Coordinate Geometry Plans
- 19.-20. Curve Stake Out Tables
- 21.-32. Storm Sewer Plan & Profiles
- 33.-36. Intersection and Paving Details
- 37.-38. Borrow Area Plan & Details
- 39.-48. Pavement Details
49. Wheelchair Ramp Details
50. Sidewalks and Steps
51. Std. Type I Curb Inlet (L=10')
52. Special Type II Inlet (L=5')
53. Area Inlet
54. Reinforced Concrete Manhole
55. Manhole Adjustment Details
56. Miscellaneous Details
- 57.-58. Schedule of Inlets and Manholes
- 59.-66. Concrete End Sections
- 67.-68. Bridge Rail Details
- 69.-71. Summary and Recapitulation of Quantities
- 72.-76. Erosion Control BMP's
77. SWPPP Plan
- 78.-83. Landscape Plans
- 84.-87. Traffic Signal Plans
- 88.-92. Signing and Marking Plans
93. Traffic Handling and Construction Sequence
- 94.-115. Traffic Control Plans
- 116.-117. Concrete Safety Barrier (Temporary)
118. Inertial Barrier - General Configuration
- 119.-120. Water Line Details
121. Drainage Map
- 122.-152. Cross Sections (119th St.)

DATE	
BY	
SURVEY	
CADD TECHNICIAN	
DESIGNERS	
SQUAD	

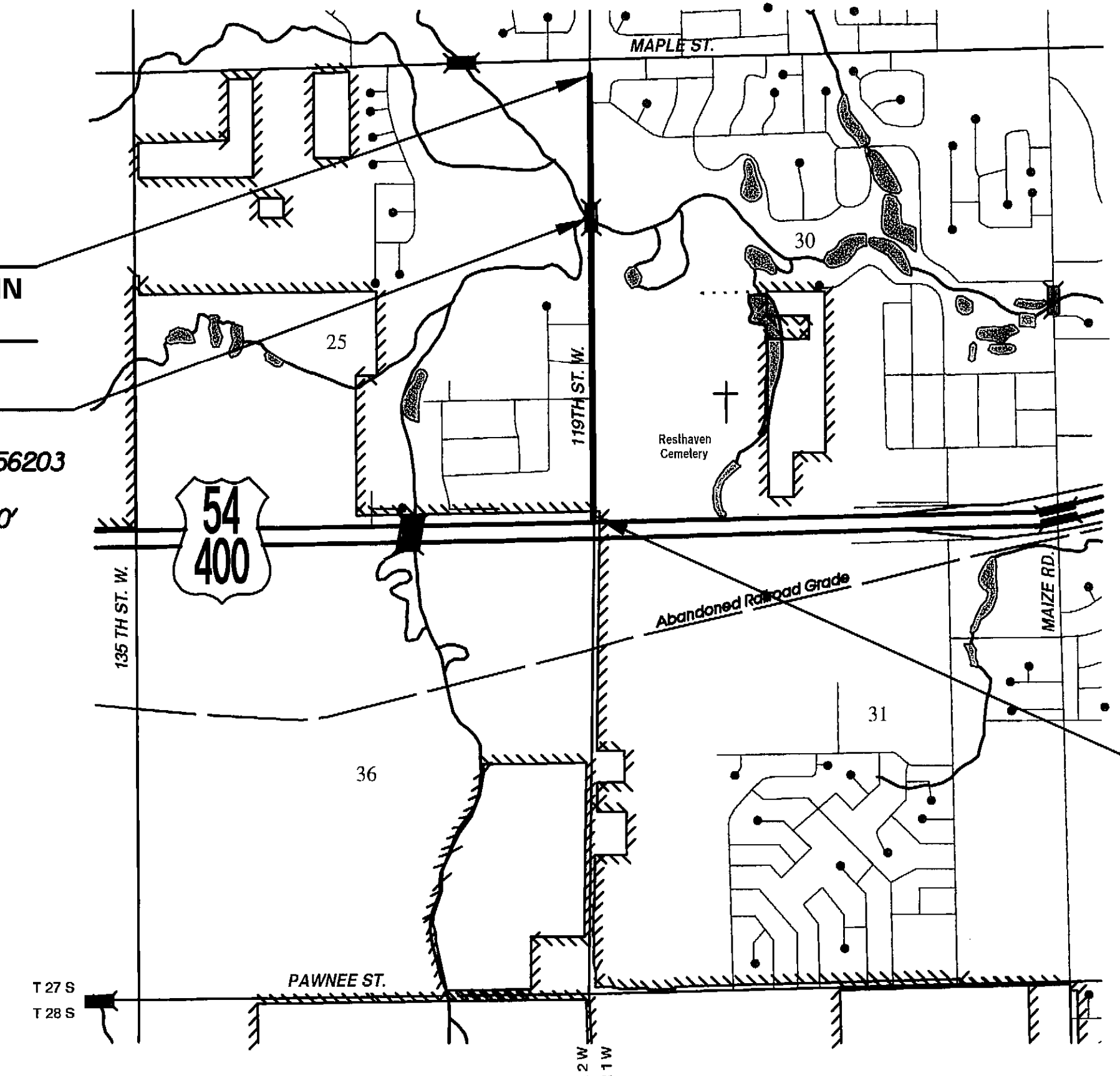
DESIGN DESIGNATION

AADT (2007) = 7,716
 AADT (2030) = 15,000
 DHV = 8.0%
 T = 3%
 V = 40 MPH
 C of A = FULL
 Clear Zone = 6'

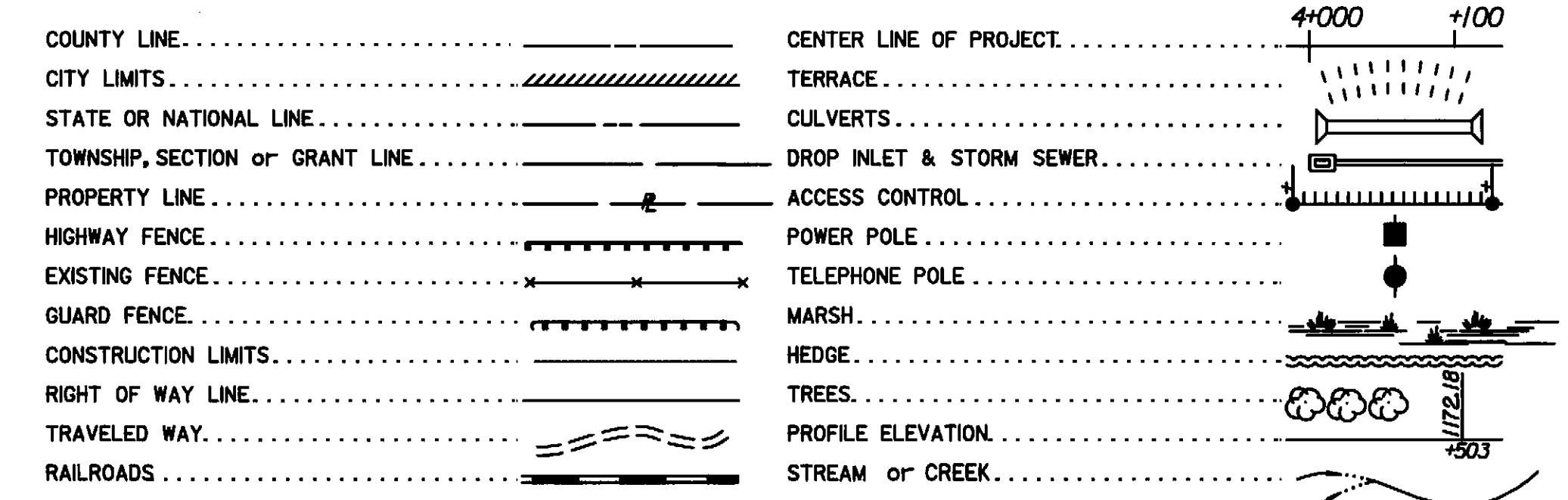
STA. 86+99.57 BEGIN
 Proj. No. 87 N-0388-01

EXCEPTION for
 Bridge No. 530400878056203
 Sta. 103+51.25 to
 Sta. 106+06.25 = 255.00'

STA. 135+50 END
 Proj. No. 87 N-0388-01



CONVENTIONAL SIGNS



GROSS LENGTH OF PROJECT 5,171.24 FT.
 EXCEPTIONS 255.00 FT.

NET LENGTH OF PROJECT 4,916.24 FT. 0.931 MILES
 NET LENGTH OF BRIDGES 0.00 FT.
 NET LENGTH OF ROAD 4,916.24 FT. 0.931 MILES

Construction Traffic Notes
 TRAFFIC TO BE CARRIED THROUGH CONSTRUCTION.
 FOR TRAFFIC HANDLING AND CONSTRUCTION SEQUENCE SEE SH. NO. 93.



Drawn By: DRP
 File: I:\2005\051789\Plan\051789-Title.dgn
 Plot: I:\2005\051789\Plan\051789-Title.dgn