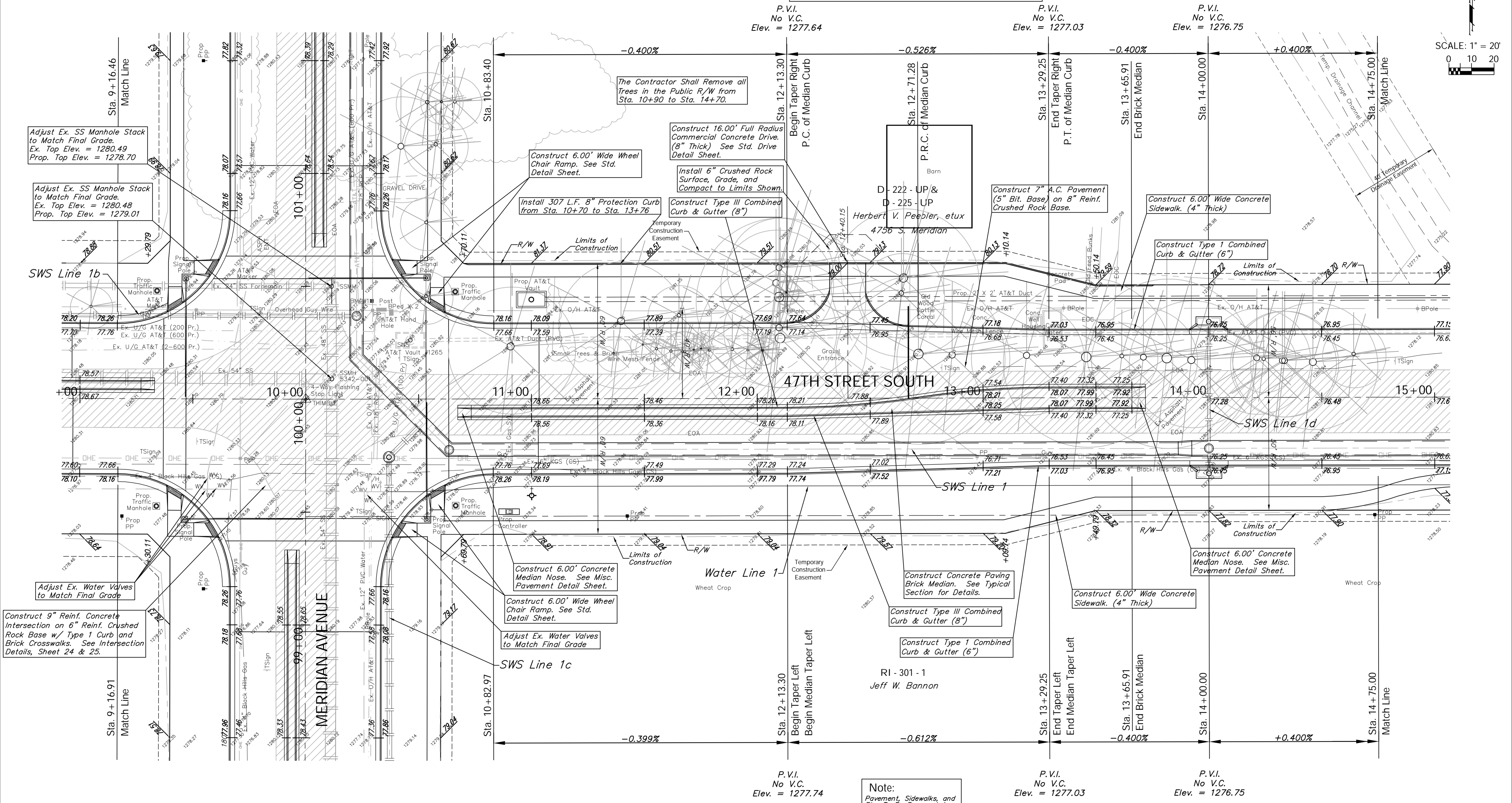
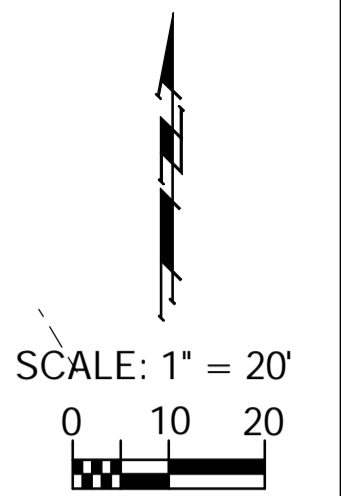


BENCHMARK:
 BM #1 - City of Wichita Disc Located in the Northeast Corner of the Intersection of Meridian and 47th Street South Sta. 10+29, 43' Lt. Elev. = 1279.18 (MSL)

The Water Well located on the north side of 47th Street at approximately Sta. 13+24 shall be plugged in accordance with all applicable laws and requirements as part of this Project. The Contractor is requested to contact Michael Jones, with KDHE, (337-6020, Wichita) for additional information. All costs associated with plugging the well, including the removal of the concrete housing, are to be SUBSIDIARY to the Lump Sum bid item: "Removal of Ex. Structures".

FHWA REGION NO.	STATE	PROJECT NO.	FISCAL YEAR	SHEET NO.	TOTAL SHEETS
7	KANSAS	87-N-0394-01	2010	12	129



Adjust Ex. SS Manhole Stack to Match Final Grade. Ex. Top Elev. = 1280.49 Prop. Top Elev. = 1278.70

Adjust Ex. SS Manhole Stack to Match Final Grade. Ex. Top Elev. = 1280.48 Prop. Top Elev. = 1279.01

Adjust Ex. Water Valves to Match Final Grade

Construct 9" Reinf. Concrete Intersection on 6" Reinf. Crushed Rock Base w/ Type 1 Curb and Brick Crosswalks. See Intersection Details, Sheet 24 & 25.

The Contractor Shall Remove all Trees in the Public R/W from Sta. 10+90 to Sta. 14+70.

Construct 6.00' Wide Wheel Chair Ramp. See Std. Detail Sheet.

Construct 16.00' Full Radius Commercial Concrete Drive. (8" Thick) See Std. Drive Detail Sheet.

Install 307 L.F. 8" Protection Curb from Sta. 10+70 to Sta. 13+76

Construct Type III Combined Curb & Gutter (8")

Construct 7" A.C. Pavement (5" Bit. Base) on 8" Reinf. Crushed Rock Base.

Construct 6.00' Wide Concrete Sidewalk. (4" Thick)

Construct Type 1 Combined Curb & Gutter (6")

Construct 6.00' Concrete Median Nose. See Misc. Pavement Detail Sheet.

Construct 6.00' Wide Concrete Sidewalk. (4" Thick)

Note:
 Pavement, Sidewalks, and Etc. To Be Removed Are Indicated By:

P.V.I. No V.C. Elev. = 1277.74

P.V.I. No V.C. Elev. = 1277.03

P.V.I. No V.C. Elev. = 1276.75

Drawing File: E:\Projects\47th St South\47th Land\dwg\47th Base.dwg (Pav02)
 Project No. 05-10-E397 CAPITAL IMPROVEMENT PROJECT
47TH STREET SOUTH PAVING
 Sta. 9+16.91 to Sta. 14+75.00
 47TH STREET SOUTH- MERIDIAN AVENUE to SENECA STREET

Baughman Company, P.A.
 315 Ellis St., Wichita, KS 67211 P 316.262.7271 F 316.262.0149
 TPVING | SURVEYING | PLANNING | LANDSCAPE ARCHITECTURE

August 2010
 SHEET 12 OF 129