

**PAVING AND INCIDENTAL DRAINAGE PLANS FOR
AVALON PARK 3RD ADDITION
PHASE 2**

CANDLEWOOD

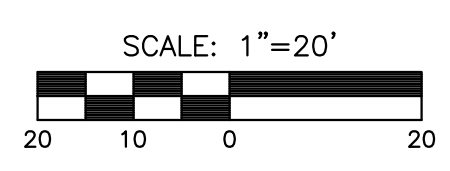
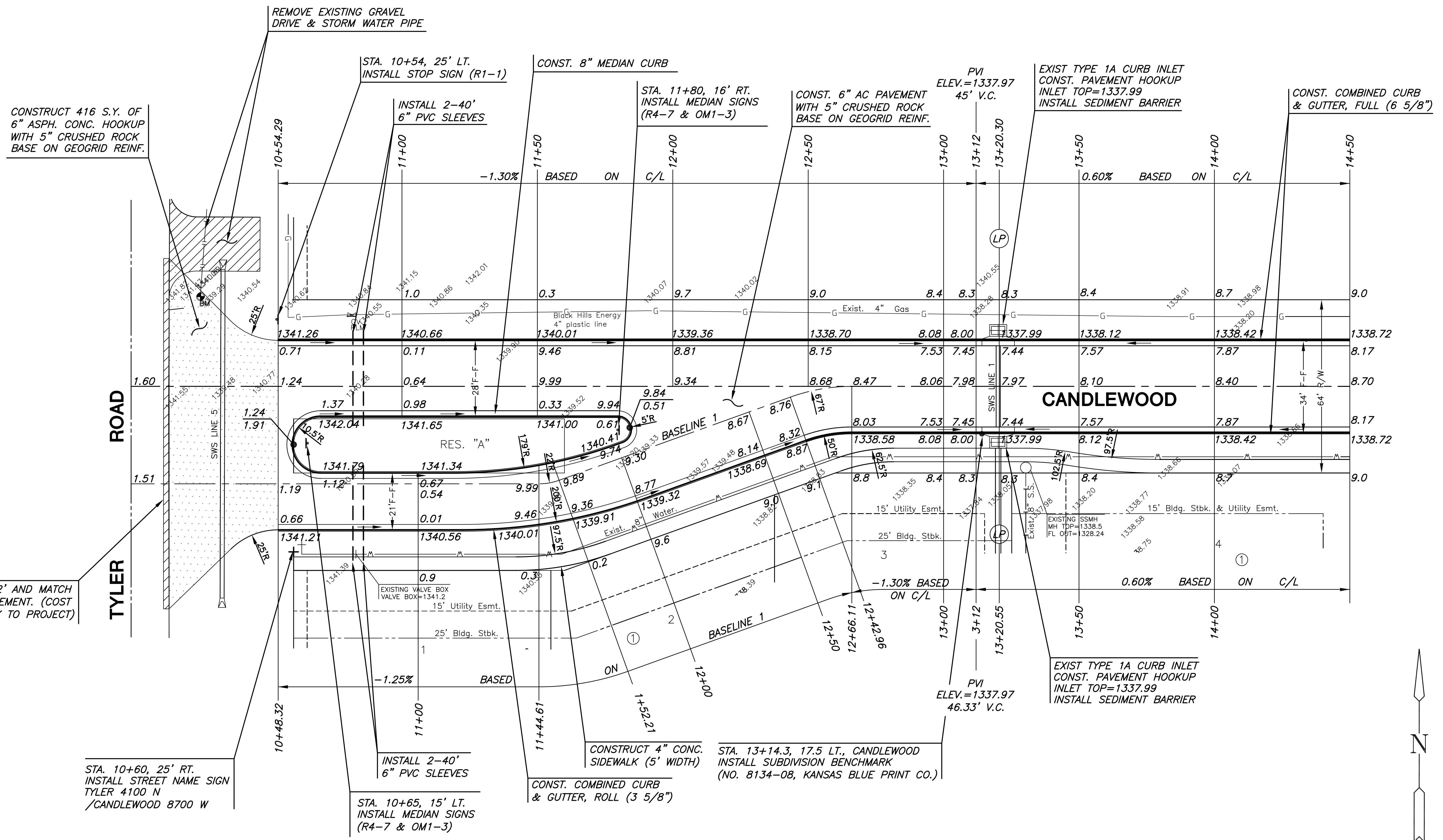
SHEET TITLE
10228
PROJECT NUMBER

DFL / JWC / GJA
DESIGNED / DRAWN / CHECKED

ISSUED
January 2011

REVISED

SHEET NO.
8 of 35



LEGEND

—+— STREET SIGN & SIGN LOCATION
(SEE SIGN ASSEMBLY TABLE
FOR TYPE & STATION OF SIGN)

NOTE:
TOP OF CURB ELEVATIONS SHOWN
ARE FOR FULL CURB. CONSTRUCT
CURB AND GUTTER AS NOTED.

SUBDIVISION BENCH MARKS

NO.	STREET AND STATION	FROM CL	DESCRIPTION	ELEVATIONS
1	CANDLEWOOD, STA. 13+14.3	17.5' RT	TOP OF CURB AT W. END OF STORM SEWER INLET	
2	CANDLEWOOD, STA. 18+26.15	17.5' RT	TOP OF CURB AT E. END OF CURB RETURN OF VALLEY GUTTER	
3	CANDLEWOOD CT., STA. 10+49.99	14.5' RT	TOP OF CURB AT E. END OF CURB RETURN OF CUL-DE-SAC	
4	CANDLEWOOD CT., STA. 10+49.99	14.5' RT	TOP OF CURB AT S.E. END OF CURB RETURN OF CUL-DE-SAC	

NOTE: CONTRACTOR SHALL INSTALL SUBDIVISION BENCH MARKS ("FLAT SURVEY MARKERS NO. 8134-08 3" TOP DIAMETER" PROVIDED BY KANSAS BLUE PRINT CO., INC.) COSTS TO BE CONSIDERED SUBSIDIARY TO CONSTRUCTION OF COMBINED CURB AND GUTTER.

PLOTTED: Tuesday, January 04, 2011 @ 10:53AM

J:\PROJECTS\2010\10228 AVALON PARK\CADD\CIVIL\PAV\10228-ET.DWG