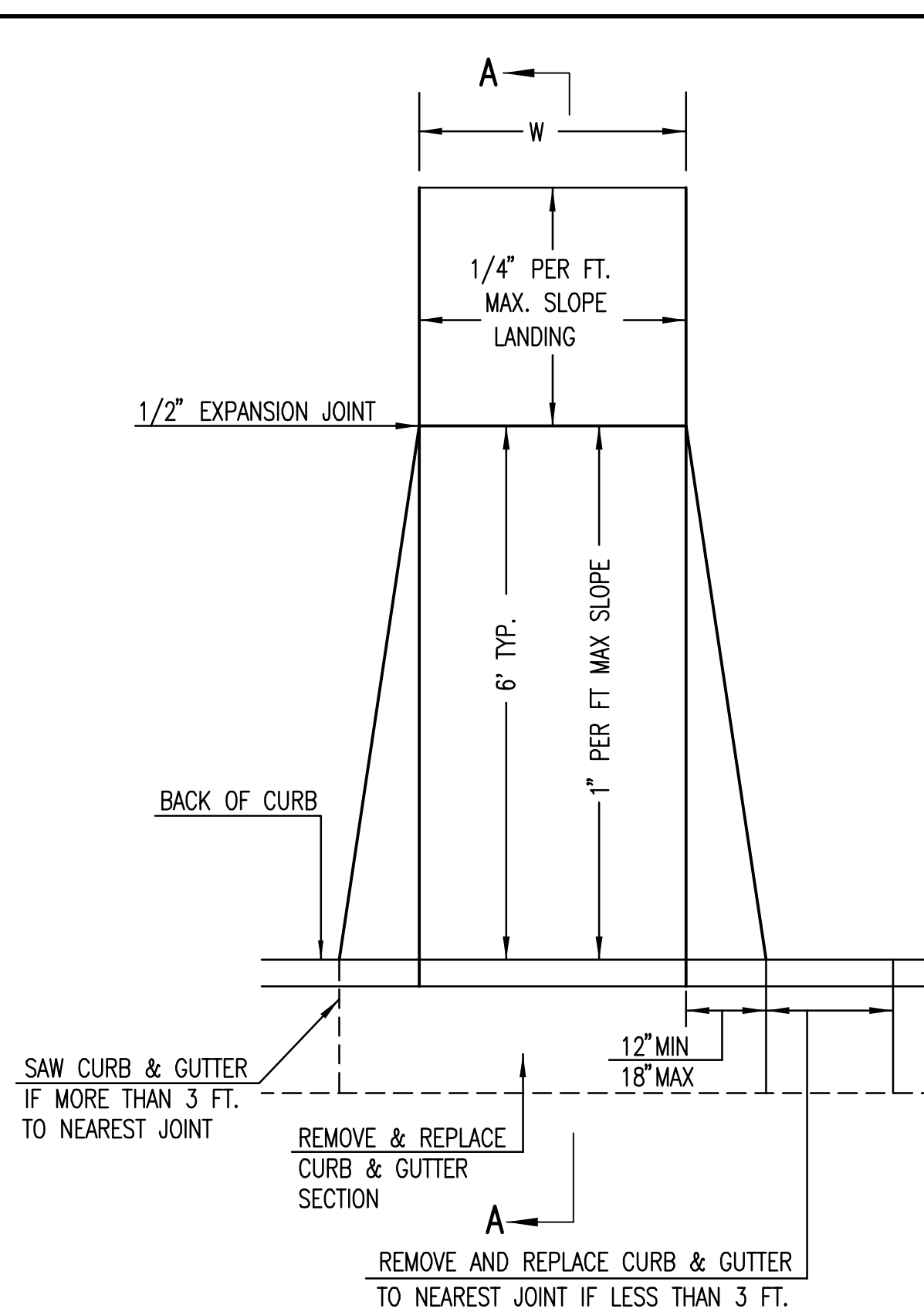
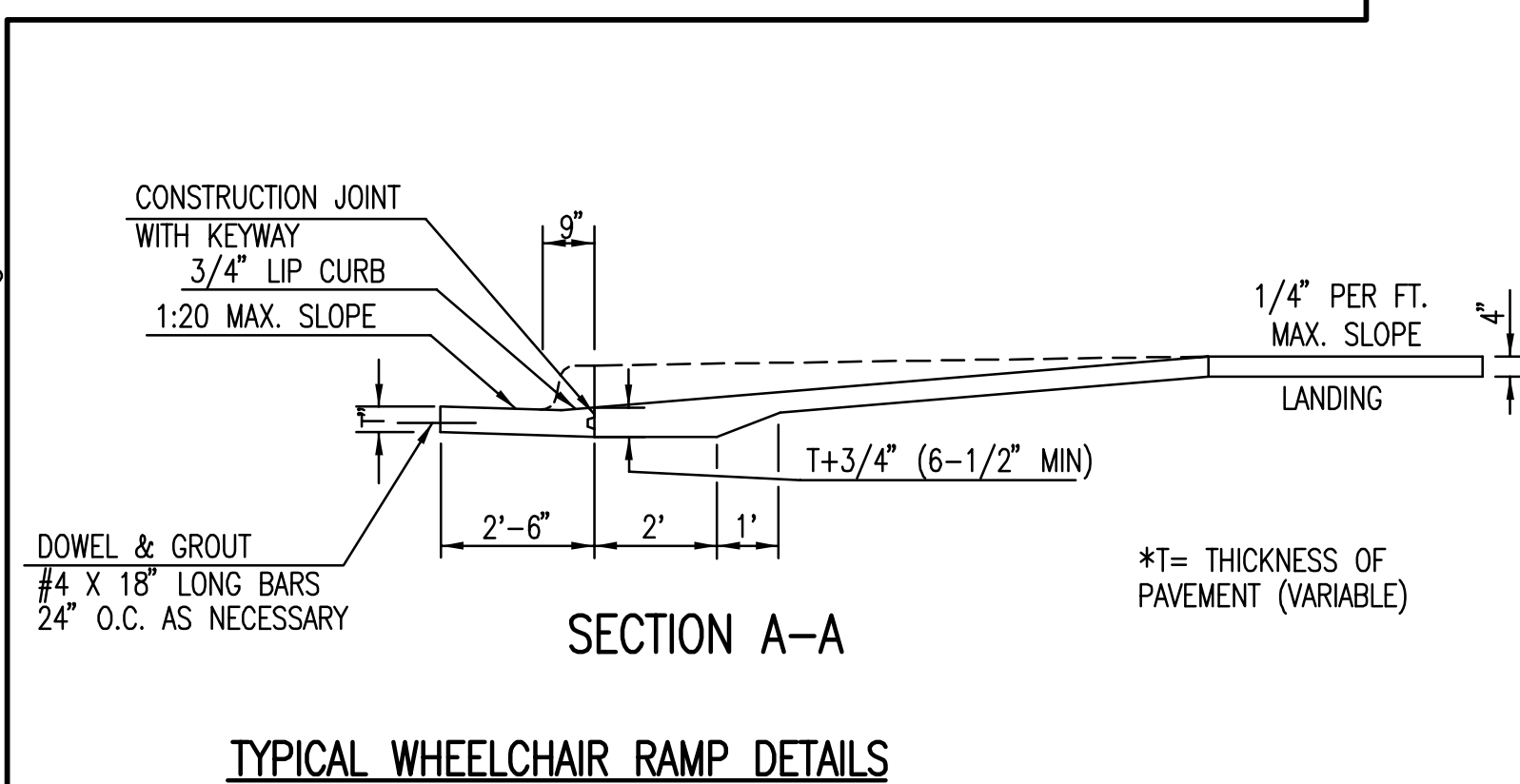
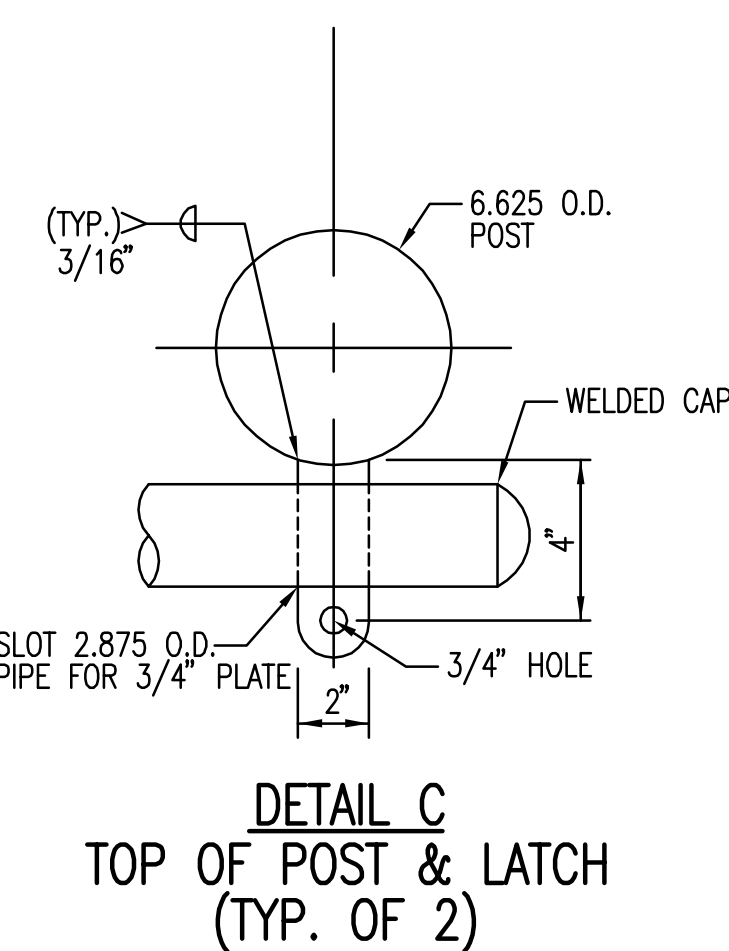
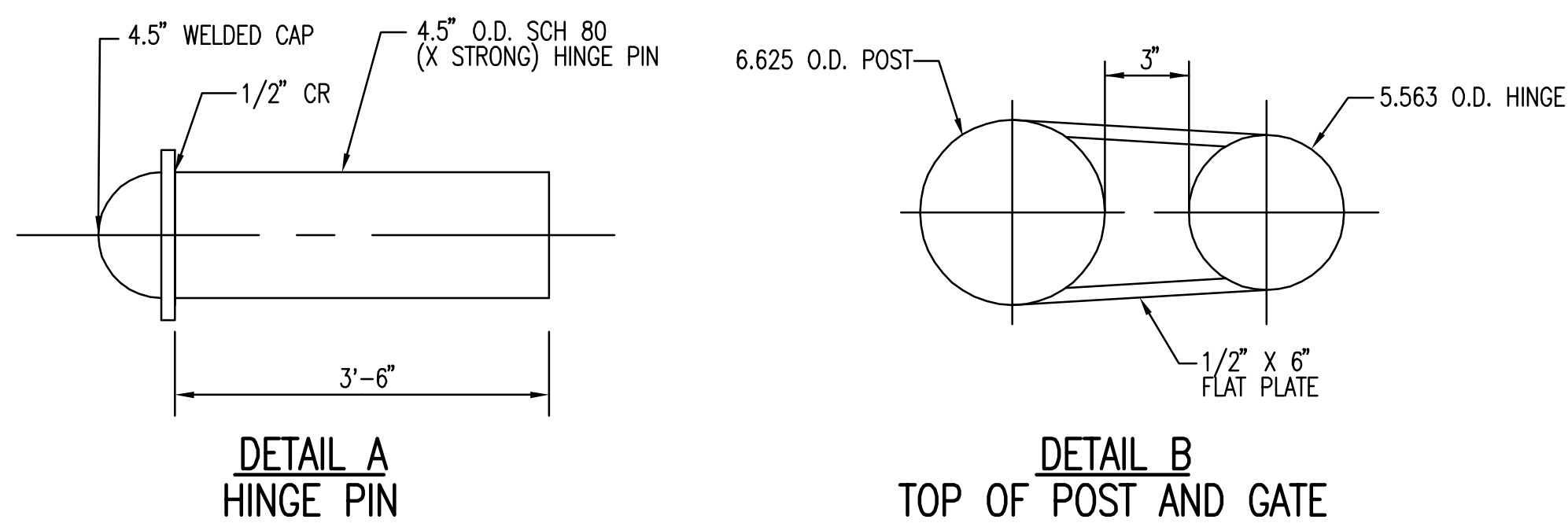
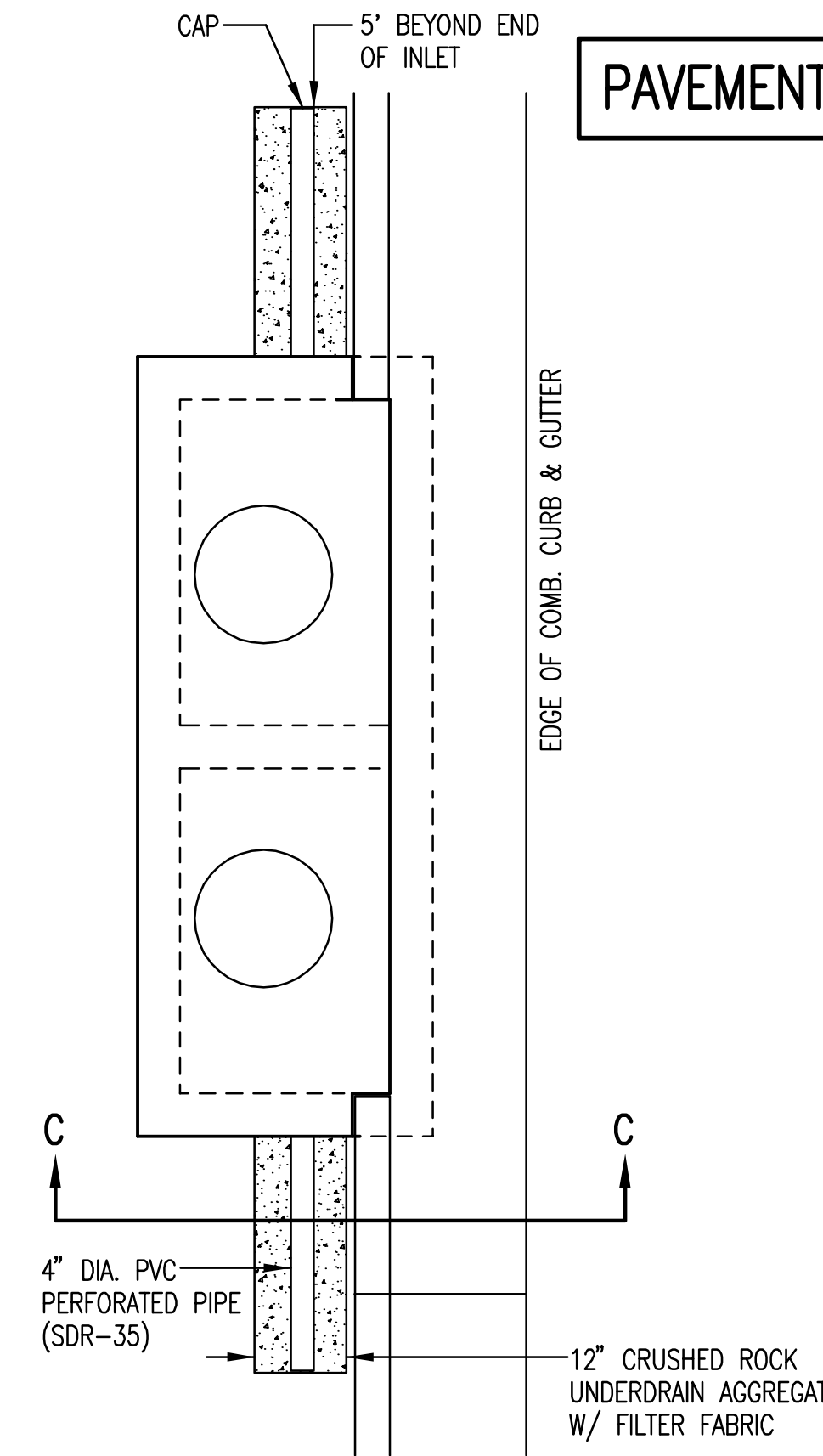


PAVEMENT: THE "SWING GATE" SHALL BE PAID FOR AT THE UNIT PRICE BID PER EACH, WHICH SHALL BE CONSIDERED FULL COMPENSATION FOR ALL MATERIALS, LABOR, TOOLS, EQUIPMENT, AND INCIDENTALS NECESSARY TO COMPLETE THE WORK.

SWING GATE DETAILS

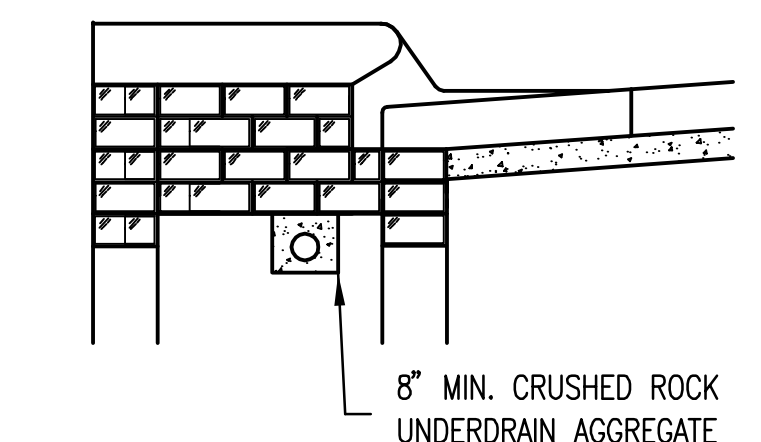


PAVEMENT UNDERDRAIN SHALL BE INSTALLED ON ALL CURB INLETS.



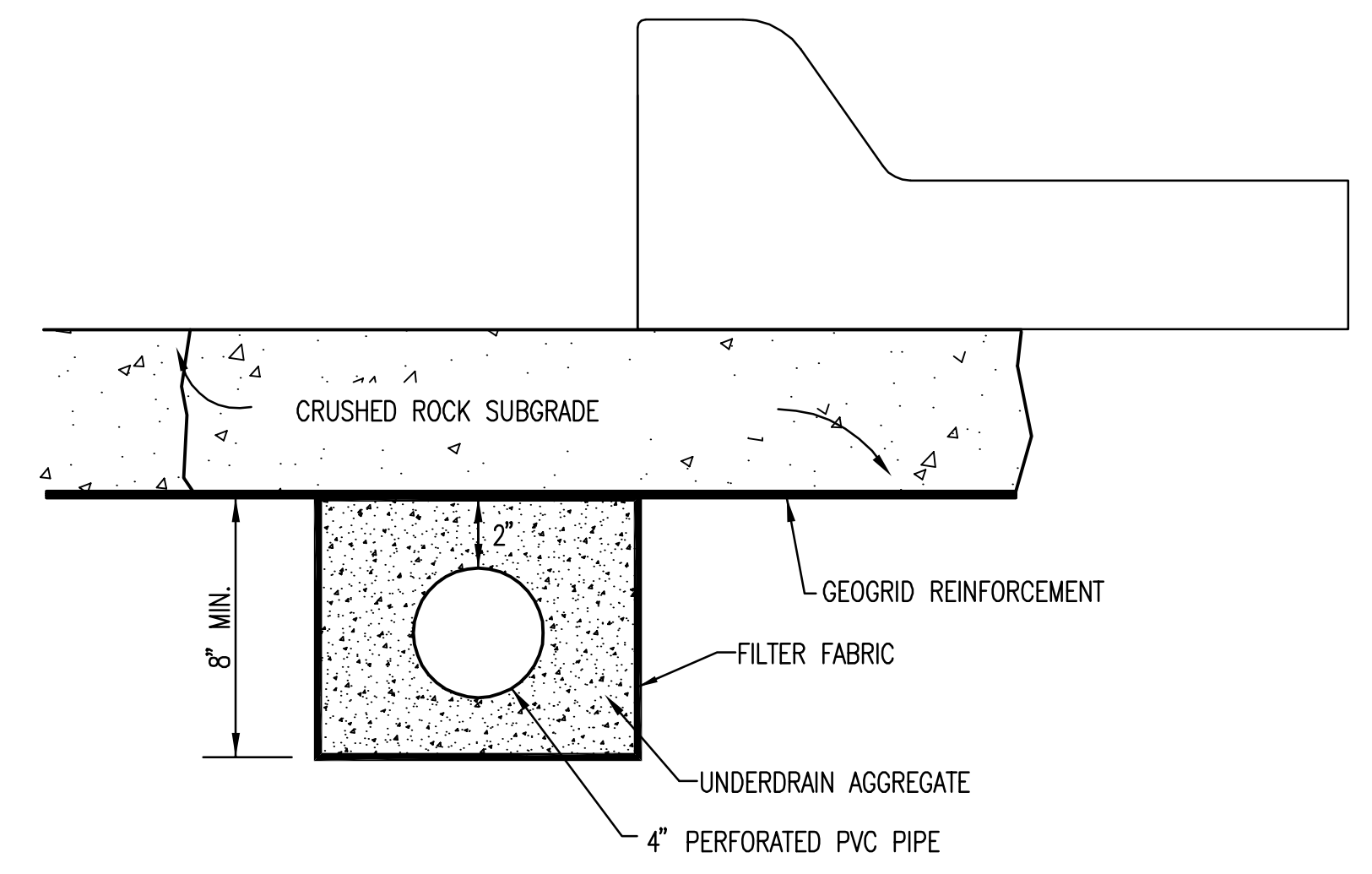
**TYPE 1 INLET
PAVEMENT UNDERDRAIN DETAIL**

BID ITEM TO BE PROVIDED PER 4" PERFORATED UNDERDRAIN PIPE.



(MIN. 16 PERFORATIONS PER LIN. FT. @ 1/4" DIA.)
PERFORATIONS TO BE ON BOTTOM HALF

SECTION C-C



SECTION C-C

PAVEMENT UNDERDRAIN LOCATIONS		
STREET	STATION	SIDE
ACCESS ROAD	22+25.00	LT. & RT.
ACCESS ROAD	26+69.80	LT. & RT.
ACCESS ROAD	29+25.54	RT.
ACCESS ROAD	32+00.00	RT.
ACCESS ROAD	38+29.52	RT.
ACCESS ROAD	42+55.96	RT.
ACCESS ROAD	42+69.96	LT.
ACCESS ROAD	45+50.00	RT.

NOTE: INLET TYPE MAY VARY FROM THAT SHOWN.

**CRUSHED ROCK GRADATION REQUIREMENTS
PERCENT OF AGGREGATE RETAINED**

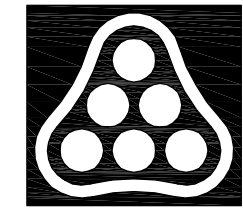
1 1/2"	0
3/4"	15-60
# 4	40-80
#40	74-92
P-200	4-12

ROCK QUALITY SHALL BE THE SAME AS SPECIFIED FOR COARSE AGGREGATE FOR ASPHALT CONCRETE MIXES.

CLASS SDR 21 SLEEVES
PAYMENT FOR "PVC SLEEVES" SHALL BE PER LINEAR FOOT, AND SHALL INCLUDE ITEMS 2 THRU 3.

- ① PAVEMENT/STREET
- ② PERMANENT MARK ON TOP OF CURB, STAMPED IN WET CONCRETE-"X" OR "S"
- ③ 4" CLASS SDR 21 SLEEVE EXTENDED 2' PAST BACK OF CURBS. SLEEVES SHALL BE BEDDED AND BACKFILLED IN ACCORDANCE WITH CITY OF WICHITA SPECIFICATIONS FOR FLEXIBLE SANITARY/STORM SEWER PIPE.
- ④ TEMPORARY T-POST MARKER, UNTIL PERMANENT BENCHMARK IS MADE IN CONCRETE (2 TOTAL)
- ⑤ 8" PVC CAPS-NOT GLUED (2 TOTAL)
- ⑥ ADJUST DEPTH WHERE NECESSARY TO AVOID OTHER UTILITIES.

Scaled 01-18-2011 9:20:36 AM by BIS
 Plot Scale 1:10 01-18-2011 11:55:33 AM by BILL J. SEKSON
 G:\2009\09307\000\PAVING\09307-19C-GATE AND MISC PAVING DTLS



No.	Revision	By	Date
HEARTLAND PREPAREDNESS CENTER PAVING AND DRAINAGE IMPROVEMENTS GATE AND MISCELLANEOUS PAVING DETAILS JAMES L. ARMOUR, P.E. - CITY ENGINEER CITY OF WICHITA PROJ. NO. 472-84898 Professional Engineering Consultants, P.A. 303 S. TOPKA • WICHITA, KANSAS 67202 316-262-2691 • FAX 316-262-3003			
Designed by	BMM	Job No.	35-09307
Drawn by	BJS	Date	December 2009

Sheet 19 of 59