

STATE	PROJECT NO.	YEAR	SHEET NO.	TOTAL SHEETS
KANSAS	87 N-0361-01	2011	46	169

SUMMARY OF QUANTITIES (For Information Only)			
LOCATION	CONCRETE MASONRY COATING (S.Y.)	SURFACE TREATMENT (S.Y.)	PROJECT
Wall "A"	44.4	36.0	Dam
Wall "C"	245.6	245.6	Boat/Fish Pass
Wall "E"	696.3	636.1	Portage
Wall "F"	79.1	62.3	Lincoln Bridge
Wall "H"	12.5	12.5	Lincoln Bridge
Wall "I"	9.6	9.6	Lincoln Bridge
Wall "J"	14.4	14.4	Lincoln Bridge
Wall "K"	20.3	20.3	Lincoln Bridge
Wall "L"	86.5	73.8	Portage
Wall "M"	61.6	50.5	Portage
Lincoln Bridge Deck	229.5	229.5	Lincoln Bridge
Lincoln Traffic Rail	369.2	369.2	Lincoln Bridge
Abutment #1	84.4	84.4	Lincoln Bridge
Abutment #2	84.4	84.4	Lincoln Bridge
Dam Pier #1	54.4	54.4	Dam
Dam Pier #5	17.6	17.6	Dam
Total	2,109.8	2,000.6	

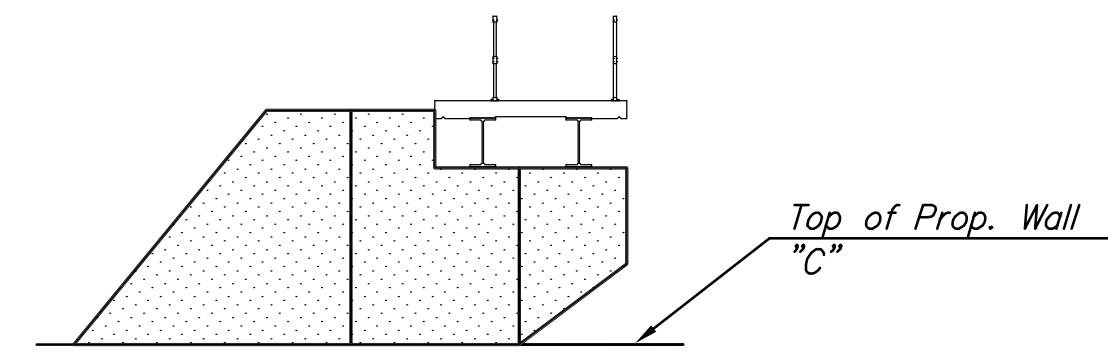
CONCRETE MASONRY COATING NOTES

- Concrete masonry coating shall be an opaque cement based polymer or acrylic polymer water seal for use in coating and sealing the exterior face of exposed concrete surfaces such as Thoro Pigmented Sealer or approved equal as outlined on this sheet.
- Contractor shall submit pigmented color formulation samples to the Engineer for review prior to performing the work.
- Contractor shall provide material with the following properties:
 - Coats and waterproofs concrete and masonry
 - Does not produce a vapor barrier (breathes)
 - Is thermally compatible with Portland cement mortar and concrete
 - Exhibits no chalking, checking, cracking, scaling, blistering, or other deleterious effects after 5000 hours in a weatherometer (ASTM G26).
- Contractor shall provide the Engineer with copies of the coating manufacturer's material safety and technical data sheets. The technical data must include detailed application instructions, minimum and maximum application temperatures, and recommended time between coats.
- Clean the surfaces to be coated so that they are free of foreign materials, projections, and loose mortar particles.
- Store, mix, apply and cure the concrete masonry coating as recommended by the manufacturer.

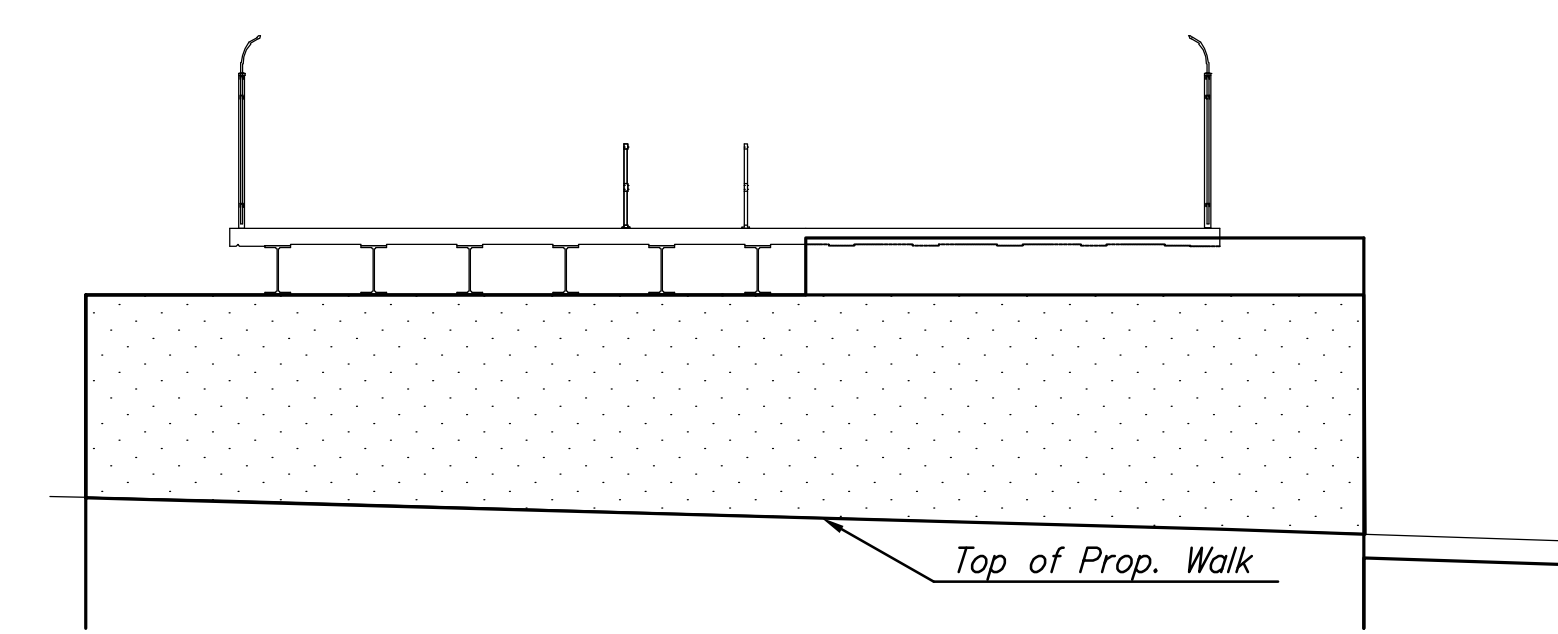
GENERAL NOTES:

- See Sheet 46.001 for Surface Treatment Details.

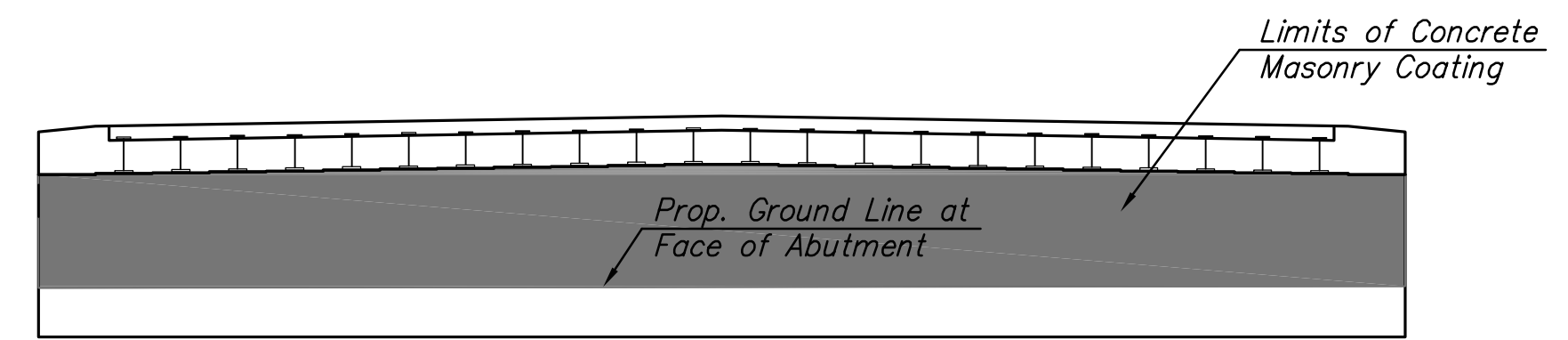
RECAPITULATION OF QUANTITIES		
ITEM	QUANTITY	UNIT
Concrete Masonry Coating and Surface Treatment	1	Lump Sum



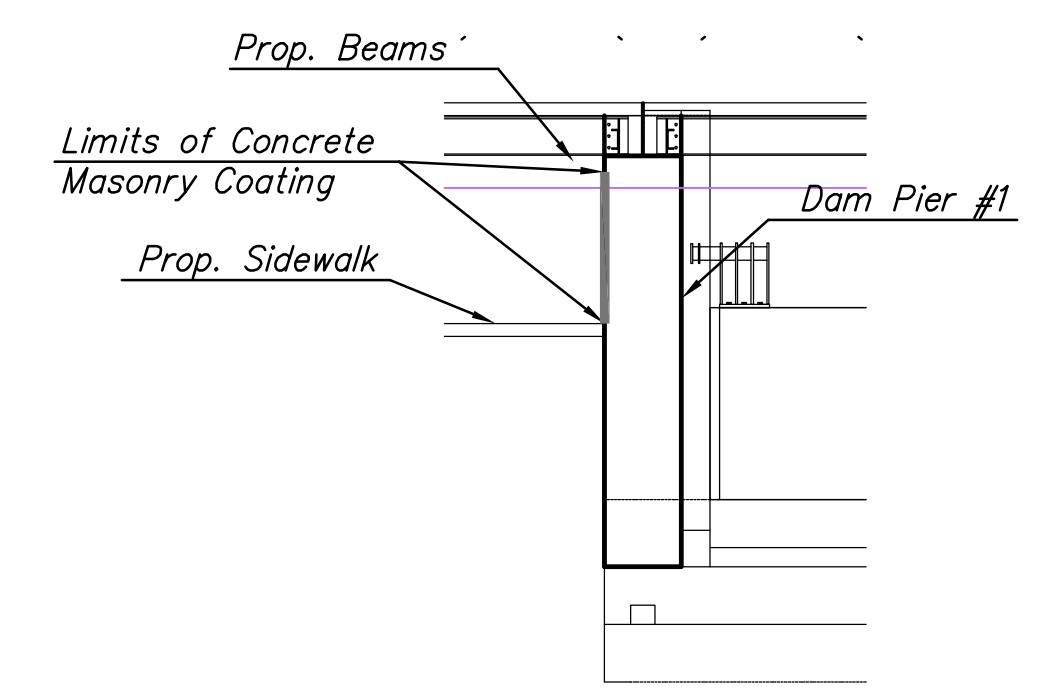
DAM PIER #5



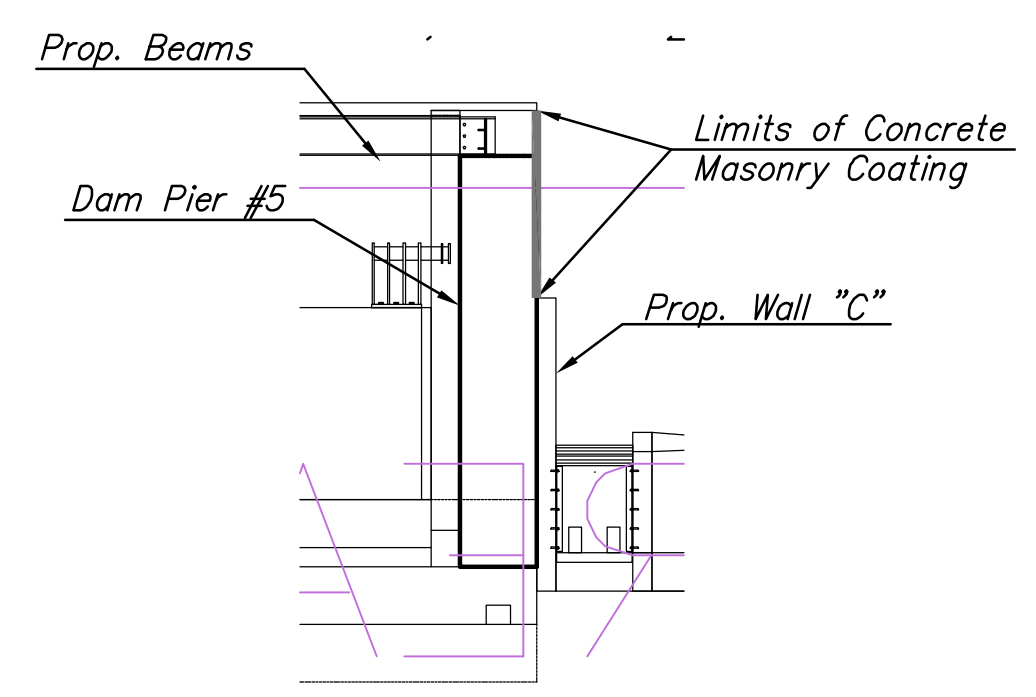
DAM PIER #1



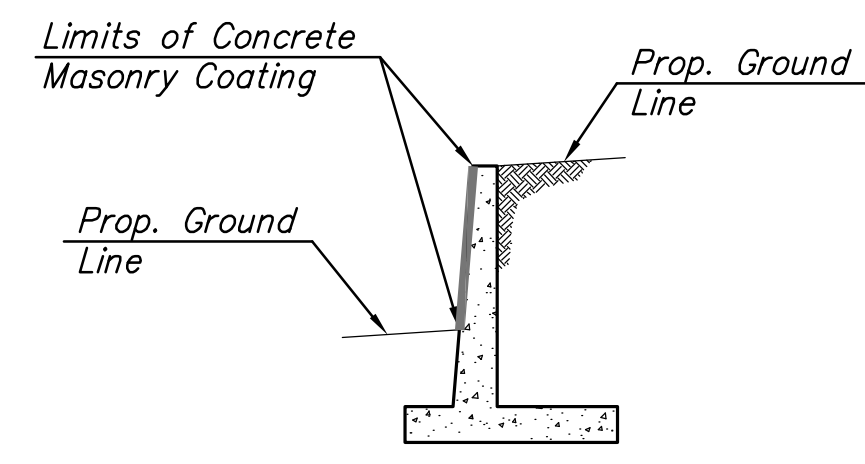
BRIDGE ABUTMENT 1 AND 2



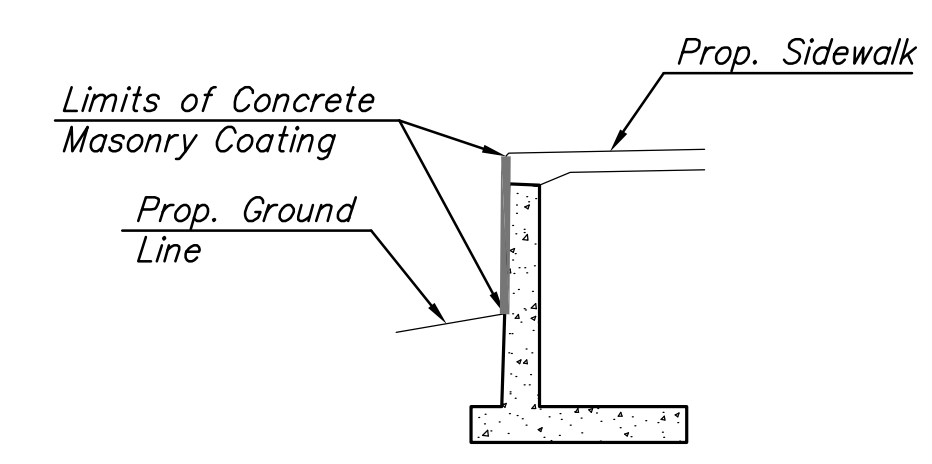
DAM PIER #1



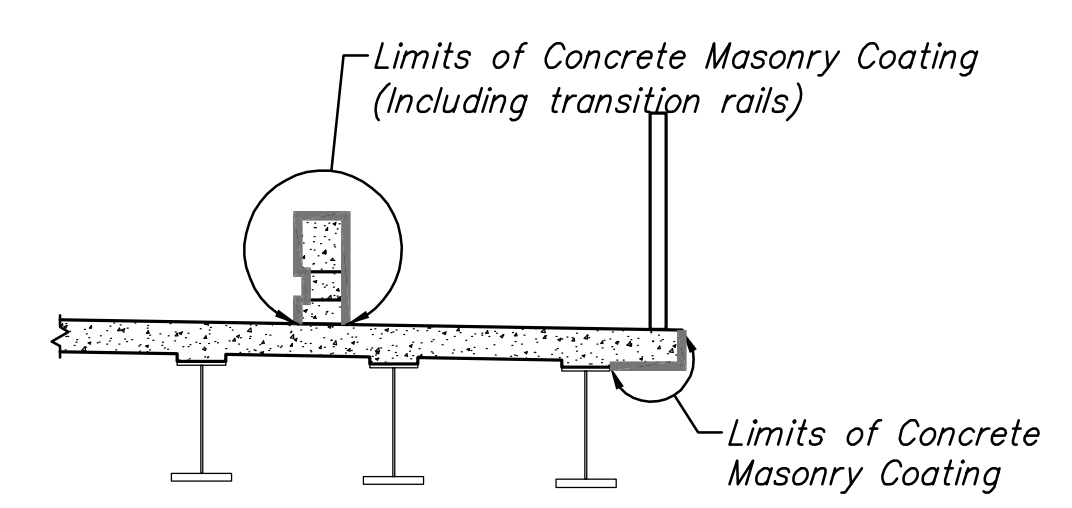
DAM PIER #5



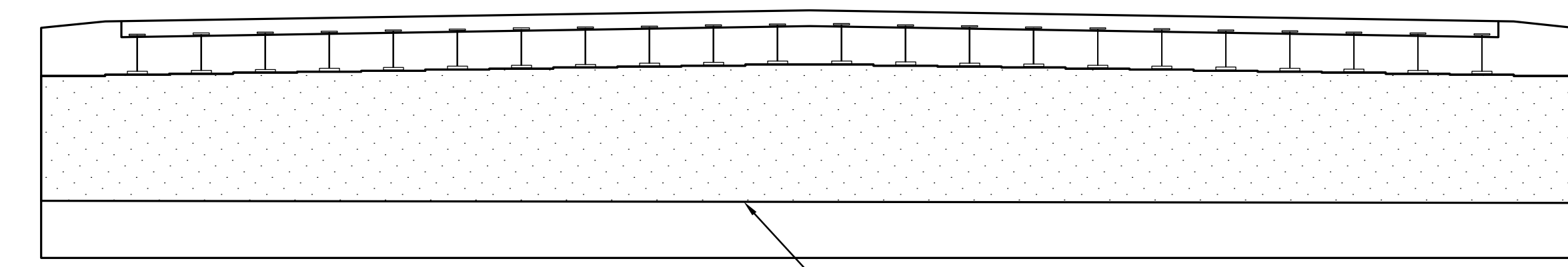
WALLS



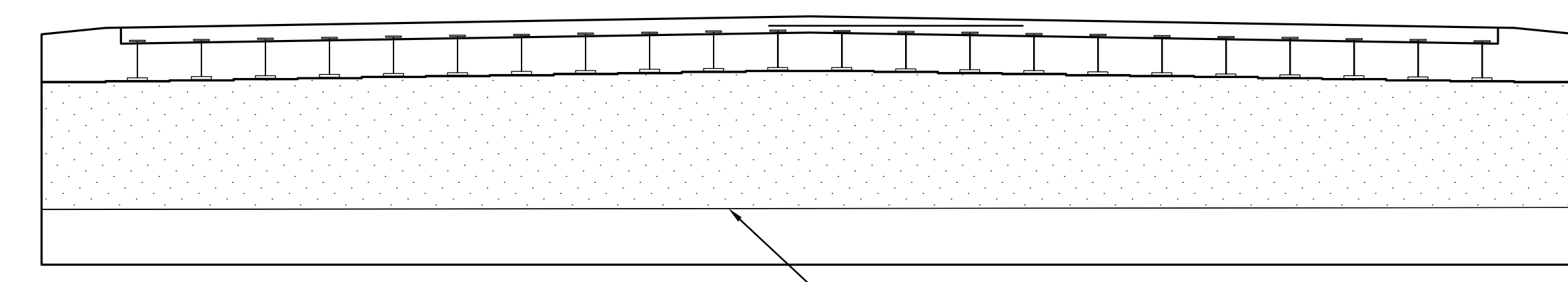
WALLS WITH SIDEWALK
LIMITS OF CONCRETE MASONRY COATING



BRIDGE DECK



BRIDGE ABUTMENT 2



BRIDGE ABUTMENT 1

LIMITS OF SURFACE TREATMENT

**LINCOLN STREET BRIDGE AND
DAM IMPROVEMENTS OVER
ARKANSAS RIVER**

SURFACE TREATMENT AND COATING
SHEET TITLE
472-84883
PROJECT NUMBER

JRA
DESIGN BY
PJD
DRAWN BY
JRA
CHECKED BY

ISSUED
1/24/2011
REVISED

SHEET NO.
46 of 169