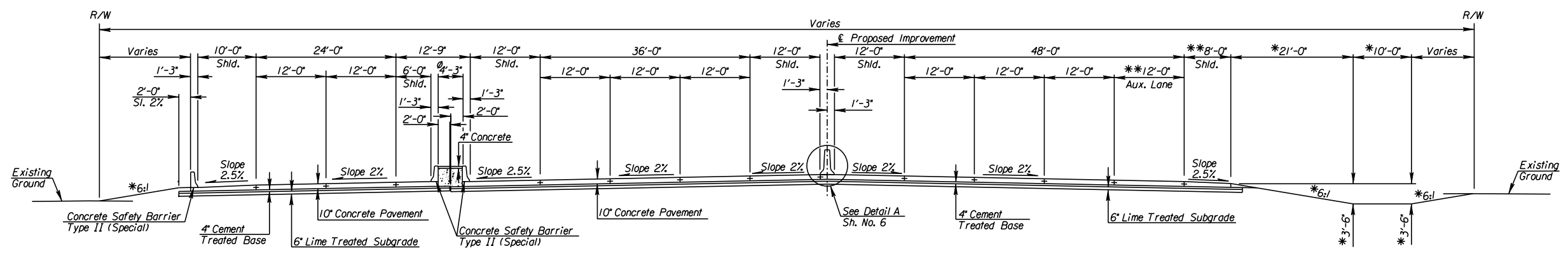


STATE	PROJECT NO.	YEAR	SHEET NO.	TOTAL SHEETS
KANSAS	472 84614	:	4	534



FILL SECTION

KELLOGG W/ CD ROAD TYPICAL SECTION
 STA. 631+00 TO STA. 649+28.67 LT.
 STA. 631+00 TO STA. 646+22.41 RT.
 STA. 656+68.06 TO STA. 661+05.43 RT.

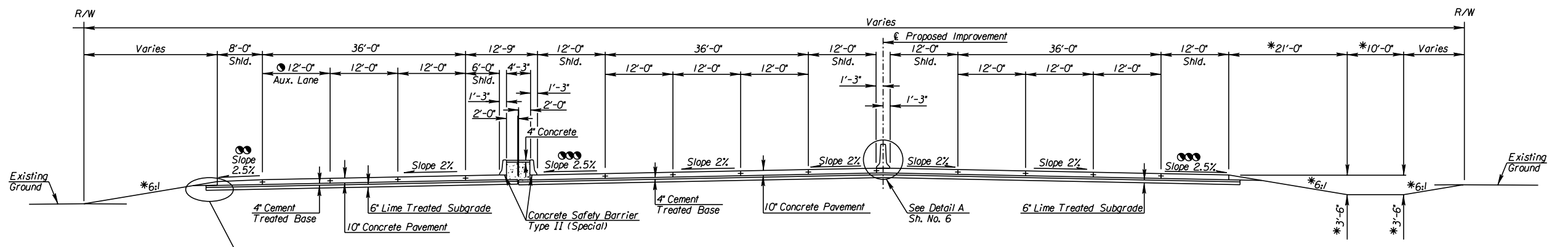
CUT SECTION

Note: Intersection of all slope lines shall be softened and rounded for pleasing appearance.

* Dimensions and slopes for standard ditches and fills. See plan and cross-sections for variations.

** Varies through K-96 Interchange. See Sh. No. 82

∅ Varies from 4'-3" to 6'-2" Sta. 638+10 to Sta. 638+35
 Varies from 6'-2" to 4'-3" Sta. 639+25 to Sta. 639+50



FILL SECTION

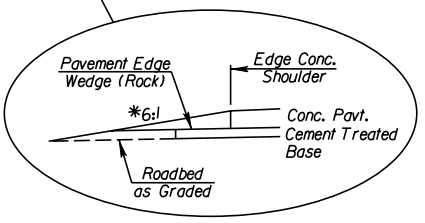
KELLOGG W/ CD ROAD TYPICAL SECTION
 STA. 649+28.67 TO STA. 663+30.37 LT.
 STA. 646+22.41 TO STA. 656+68.06 RT.

CUT SECTION

● Varies Sta. 661+91.79 to Sta. 668+30.37. See Sh. No. 92 (Ramp T).

● Varies from 2.5% to 2% Sta. 658+57.87 to Sta. 658+72.87
 Varies from 2% to 2.5% Sta. 661+00.50 to Sta. 661+15.50

● Varies from 2.5% to 2% Sta. 658+71.50 to Sta. 658+86.50
 Varies from 2% to 2.5% Sta. 661+45.82 to Sta. 661+60.82



CITY OF WICHITA
 EAST KELLOGG
 TYPICAL SECTIONS

10:34:39 AM
 2/9/2011
 T:\35766A\Cadd\Sheets\Roadway\Typ\K2MLTYP01.dgn
 SURV. - PLOT CADD DES. - DR. - TR. - CKD. - APP.