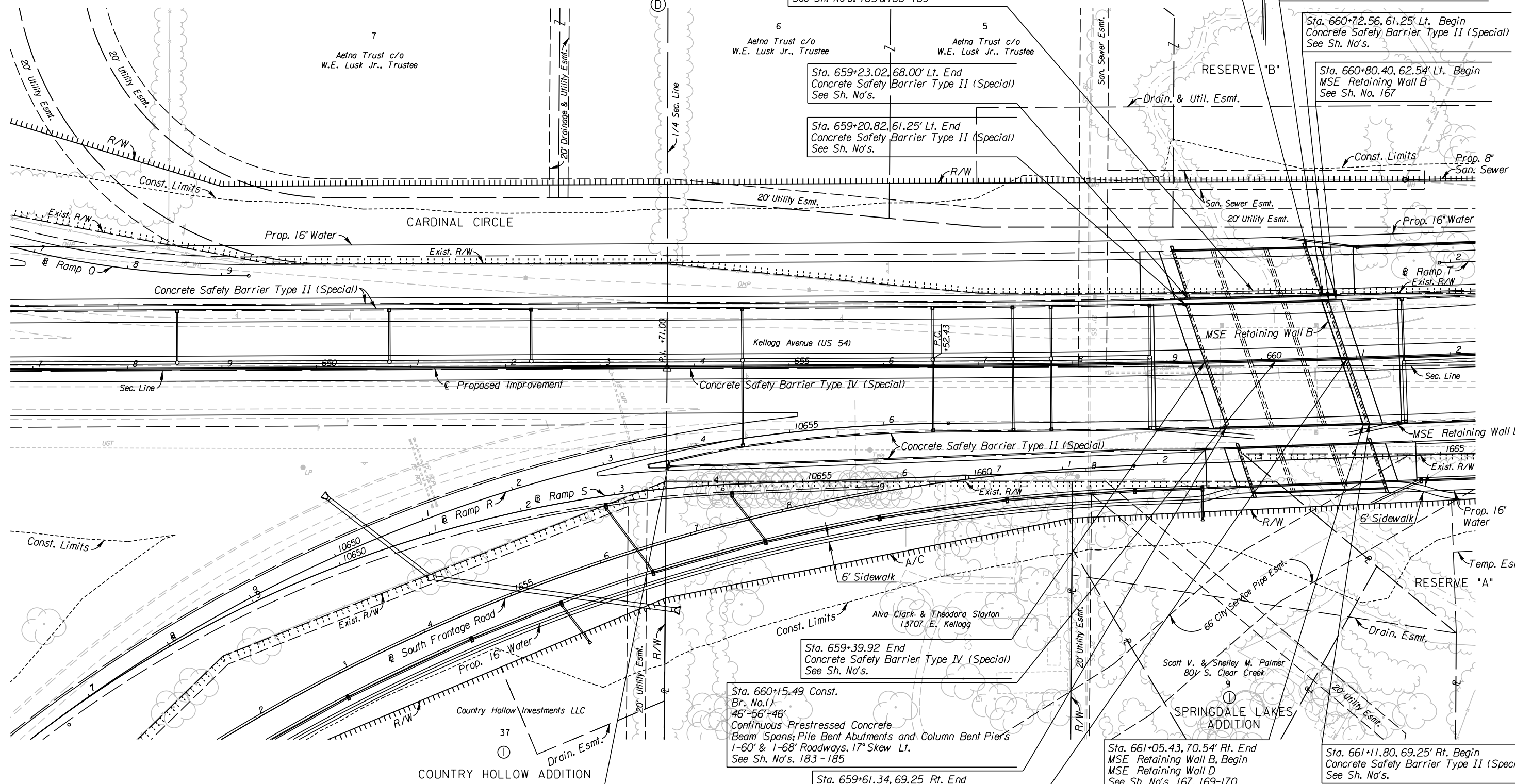


STATE	PROJECT NO.	YEAR	SHEET NO.	TOTAL SHEETS
KANSAS	472 84614	:	15	534

MEADOWLAND ADDITION



Sta. 659+92.76, 74.00' Lt. Const.
Br. No.(1)
42'-56'-42'
Reinforced Concrete Haunched Slab Spans
Pile Bent Abutments and Column Bent Piers
1-50' Roadway, 17°04'36" Skew Lt.
See Sh. No's. 183 & 188-189

Sta. 660+50.97, 118.00' Lt. Begin
Concrete Safety Barrier Type II (Special)
See Sh. No's.

Sta. 660+66.20, 68.00' Lt. Begin
Concrete Safety Barrier Type II (Special)
See Sh. No's.

Sta. 660+72.56, 61.25' Lt. Begin
Concrete Safety Barrier Type II (Special)
See Sh. No's.

Sta. 660+80.40, 62.54' Lt. Begin
MSE Retaining Wall B
See Sh. No. 167

Sta. 659+23.02, 68.00' Lt. End
Concrete Safety Barrier Type II (Special)
See Sh. No's.

Sta. 659+20.82, 61.25' Lt. End
Concrete Safety Barrier Type II (Special)
See Sh. No's.

Sta. 659+39.92 End
Concrete Safety Barrier Type IV (Special)
See Sh. No's.

Sta. 660+15.49 Const.
Br. No.(1)
46'-56'-46'
Continuous Prestressed Concrete
Beam Spans; Pile Bent Abutments and Column Bent Piers
1-60' & 1-68' Roadways, 17° Skew Lt.
See Sh. No's. 183 - 185

Sta. 659+61.34, 69.25' Rt. End
Concrete Safety Barrier Type II (Special)
See Sh. No's.

Sta. 660+91.05 Begin
Concrete Safety Barrier Type IV (Special)
See Sh. No's.

Sta. 661+05.43, 70.54' Rt. End
MSE Retaining Wall B, Begin
MSE Retaining Wall D
See Sh. No's. 167, 169-170

Sta. 661+11.80, 69.25' Rt. Begin
Concrete Safety Barrier Type II (Special)
See Sh. No's.

See Sh. No's. 102-130 for SWS Plans.
See Sh. No's. 136-139 for San. Sewer Plans.
See Sh. No's. 140-162 for Water Plans.

Sta. 653+72.33, 100.21' Rt. =
Sta. 10653+68.46 @ Ramp R, 10.92' Rt. Begin
Concrete Safety Barrier Type II (Special)
Install Impact Attenuator (Severe Duty) (Special)
See Sh. No's.

- UTILITIES**
- Gas2
 - Power
 - Sanitary Sewer
 - Storm Water Sewer
 - Telephone
 - Water
 - Southern Star Pipeline
 - Westar
 - Wichita Water & Sewer
 - Wichita Water & Sewer
 - AT&T
 - Wichita Water & Sewer

CITY OF WICHITA
EAST KELLOGG
PLAN
STA. 647+00 TO STA. 662+00

10:39:17 AM
 2/9/2011
 T:\35766A\Cadd\Sheets\Roadway\EK2ML\PLN03.dgn
 SURV. - PLOT CADD DES. - DR. - TR. - CKD. - APP.