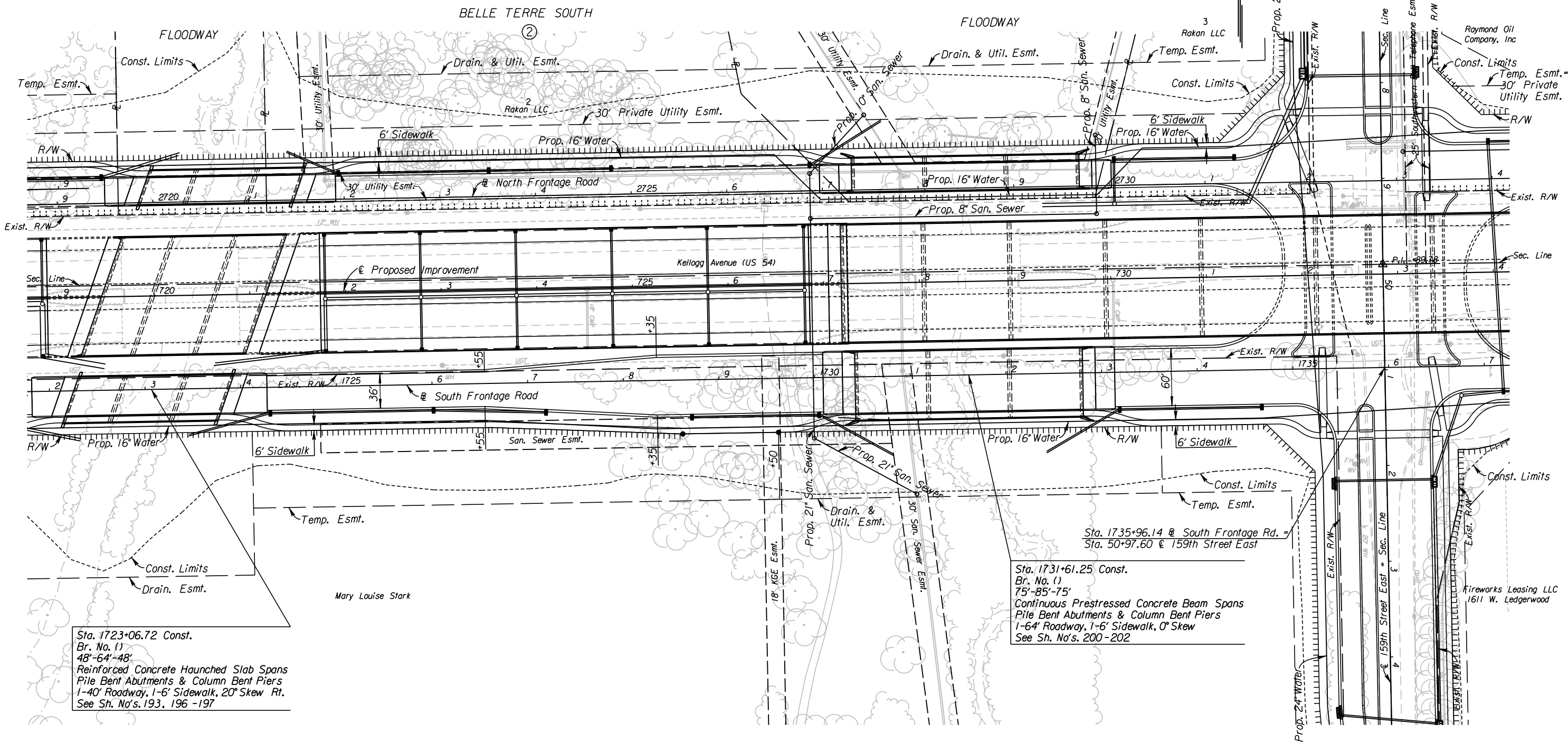


STATE	PROJECT NO.	YEAR	SHEET NO.	TOTAL SHEETS
KANSAS	472 84614	.	47	534



Sta. 1723+06.72 Const.
 Br. No. (1)
 48'-64'-48'
 Reinforced Concrete Haunched Slab Spans
 Pile Bent Abutments & Column Bent Piers
 1-40' Roadway, 1-6' Sidewalk, 20° Skew Rt.
 See Sh. No's. 193, 196 -197

Sta. 1731+61.25 Const.
 Br. No. (1)
 75'-85'-75'
 Continuous Prestressed Concrete Beam Spans
 Pile Bent Abutments & Column Bent Piers
 1-64' Roadway, 1-6' Sidewalk, 0° Skew
 See Sh. No's. 200 -202

- UTILITIES**
- Cable
 - Gas
 - Power
 - Sanitary Sewer
 - Storm Water Sewer
 - Telephone
 - Traffic Signal
 - Water
 - Cox Communications
 - Kansas Gas Service
 - Westar
 - Wichita Water & Sewer
 - Wichita Water & Sewer
 - AT&T
 - City of Wichita
 - Wichita Water & Sewer

See Sh. No's. 102-130 for SWS Plans.
 See Sh. No's. 136-139 for San. Sewer Plans.
 See Sh. No's. 140-162 for Water Plans.

CITY OF WICHITA

SOUTH FRONTAGE ROAD
 PLAN
 STA. 1722+00 TO STA. 1737+00

7:22:22 AM
 2/20/2011
 G:\W06\0035\Road\35766A-Project\1\Design_Management\CADD\Bose\Bor\der.s\EK2\FSP\N10.dgn
 SURV. PLOT CADD DES. DR. TR. CKD. APP.