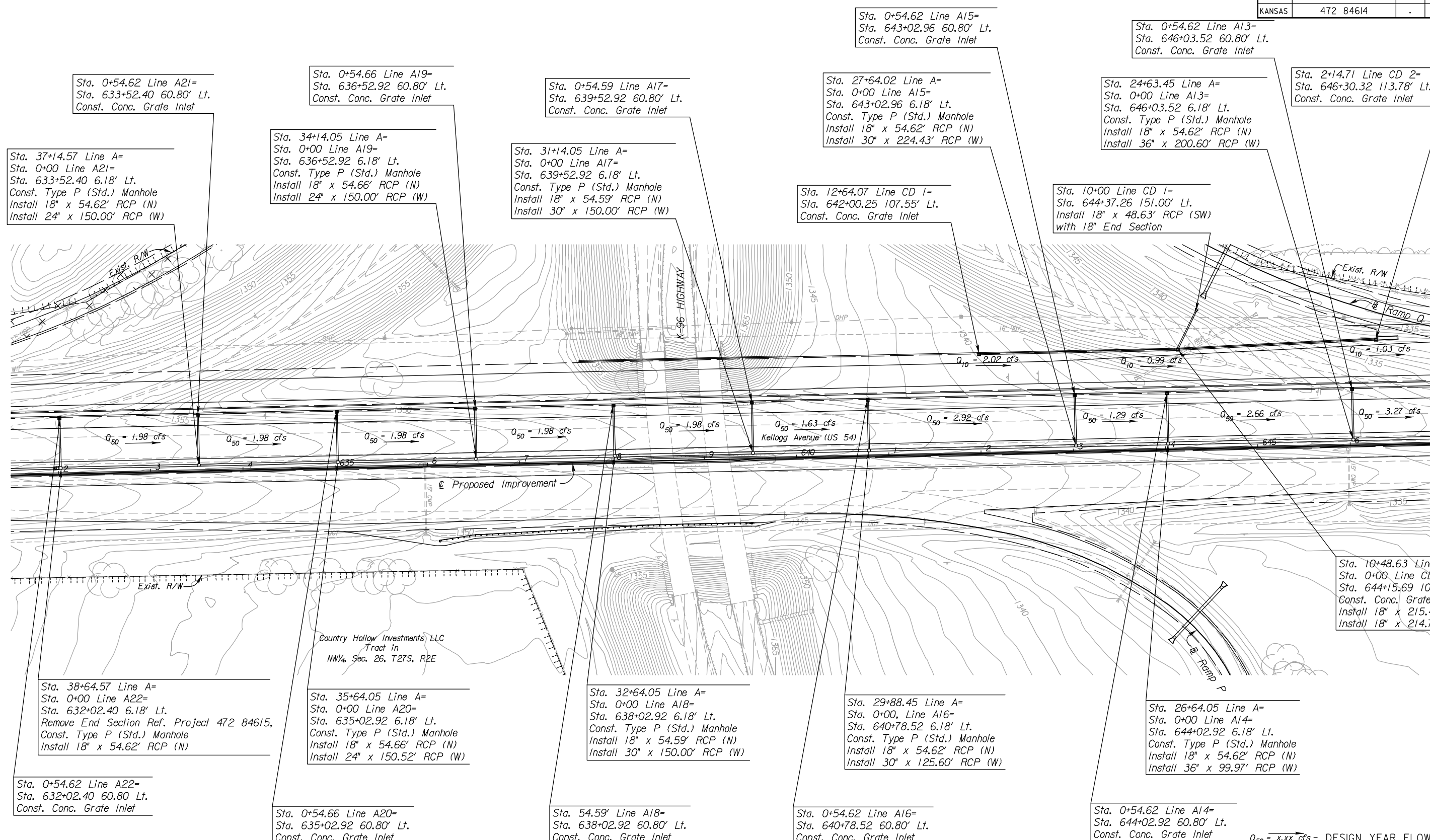


STATE	PROJECT NO.	YEAR	SHEET NO.	TOTAL SHEETS
KANSAS	472 84614	.	102	534

SCALE: 1"=50'



Sta. 0+54.62 Line A21=  
Sta. 633+52.40 60.80' Lt.  
Const. Conc. Grate Inlet

Sta. 0+54.66 Line A19=  
Sta. 636+52.92 60.80' Lt.  
Const. Conc. Grate Inlet

Sta. 0+54.59 Line A17=  
Sta. 639+52.92 60.80' Lt.  
Const. Conc. Grate Inlet

Sta. 0+54.62 Line A15=  
Sta. 643+02.96 60.80' Lt.  
Const. Conc. Grate Inlet

Sta. 0+54.62 Line A13=  
Sta. 646+03.52 60.80' Lt.  
Const. Conc. Grate Inlet

Sta. 2+14.71 Line CD 2=  
Sta. 646+30.32 113.78' Lt.  
Const. Conc. Grate Inlet

Sta. 37+14.57 Line A=  
Sta. 0+00 Line A21=  
Sta. 633+52.40 6.18' Lt.  
Const. Type P (Std.) Manhole  
Install 18" x 54.62' RCP (N)  
Install 24" x 150.00' RCP (W)

Sta. 34+14.05 Line A=  
Sta. 0+00 Line A19=  
Sta. 636+52.92 6.18' Lt.  
Const. Type P (Std.) Manhole  
Install 18" x 54.66' RCP (N)  
Install 24" x 150.00' RCP (W)

Sta. 31+14.05 Line A=  
Sta. 0+00 Line A17=  
Sta. 639+52.92 6.18' Lt.  
Const. Type P (Std.) Manhole  
Install 18" x 54.59' RCP (N)  
Install 30" x 150.00' RCP (W)

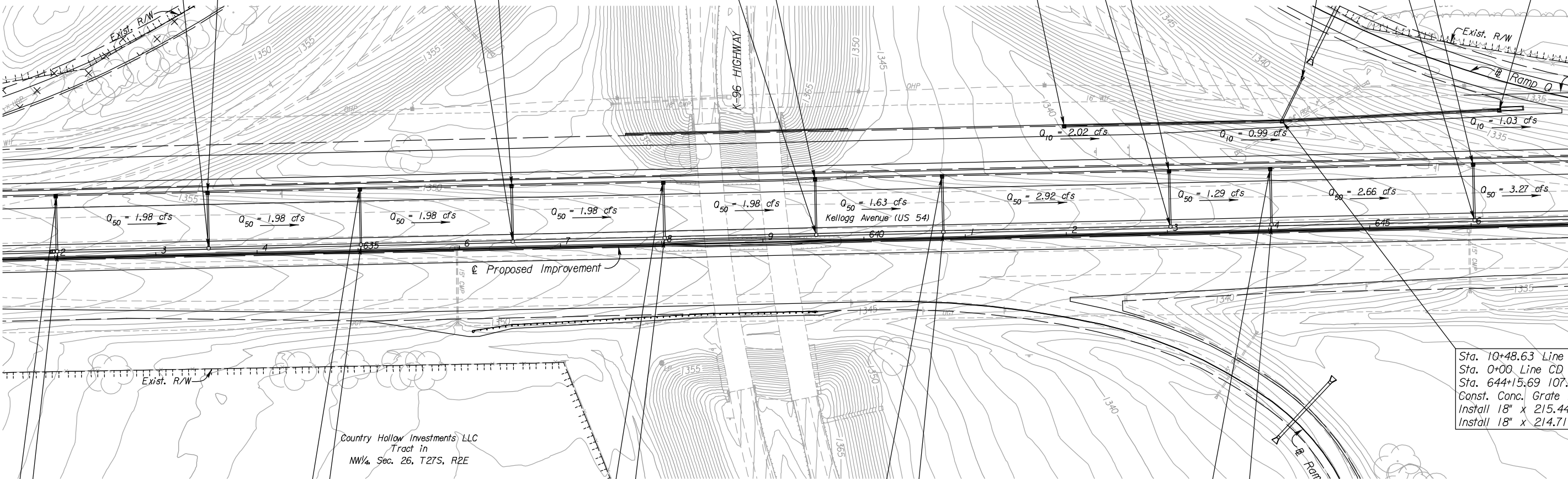
Sta. 27+64.02 Line A=  
Sta. 0+00 Line A15=  
Sta. 643+02.96 6.18' Lt.  
Const. Type P (Std.) Manhole  
Install 18" x 54.62' RCP (N)  
Install 30" x 224.43' RCP (W)

Sta. 24+63.45 Line A=  
Sta. 0+00 Line A13=  
Sta. 646+03.52 6.18' Lt.  
Const. Type P (Std.) Manhole  
Install 18" x 54.62' RCP (N)  
Install 36" x 200.60' RCP (W)

Sta. 12+64.07 Line CD 1=  
Sta. 642+00.25 107.55' Lt.  
Const. Conc. Grate Inlet

Sta. 10+00 Line CD 1=  
Sta. 644+37.26 151.00' Lt.  
Install 18" x 48.63' RCP (SW)  
with 18" End Section

Sta. 10+48.63 Line CD 1=  
Sta. 0+00 Line CD 2=  
Sta. 644+15.69 107.65' Lt.  
Const. Conc. Grate Inlet  
Install 18" x 215.44' (W)  
Install 18" x 214.71' (E)



Country Hollow Investments LLC  
Tract in  
NW/4 Sec. 26, T27S, R2E

Sta. 38+64.57 Line A=  
Sta. 0+00 Line A22=  
Sta. 632+02.40 6.18' Lt.  
Remove End Section Ref. Project 472 84615,  
Const. Type P (Std.) Manhole  
Install 18" x 54.62' RCP (N)

Sta. 35+64.05 Line A=  
Sta. 0+00 Line A20=  
Sta. 635+02.92 6.18' Lt.  
Const. Type P (Std.) Manhole  
Install 18" x 54.66' RCP (N)  
Install 24" x 150.52' RCP (W)

Sta. 32+64.05 Line A=  
Sta. 0+00 Line A18=  
Sta. 638+02.92 6.18' Lt.  
Const. Type P (Std.) Manhole  
Install 18" x 54.59' RCP (N)  
Install 30" x 150.00' RCP (W)

Sta. 29+88.45 Line A=  
Sta. 0+00, Line A16=  
Sta. 640+78.52 6.18' Lt.  
Const. Type P (Std.) Manhole  
Install 18" x 54.62' RCP (N)  
Install 30" x 125.60' RCP (W)

Sta. 26+64.05 Line A=  
Sta. 0+00 Line A14=  
Sta. 644+02.92 6.18' Lt.  
Const. Type P (Std.) Manhole  
Install 18" x 54.62' RCP (N)  
Install 36" x 99.97' RCP (W)

Sta. 0+54.62 Line A22=  
Sta. 632+02.40 60.80 Lt.  
Const. Conc. Grate Inlet

Sta. 0+54.66 Line A20=  
Sta. 635+02.92 60.80' Lt.  
Const. Conc. Grate Inlet

Sta. 54.59' Line A18=  
Sta. 638+02.92 60.80' Lt.  
Const. Conc. Grate Inlet

Sta. 0+54.62 Line A16=  
Sta. 640+78.52 60.80' Lt.  
Const. Conc. Grate Inlet

Sta. 0+54.62 Line A14=  
Sta. 644+02.92 60.80' Lt.  
Const. Conc. Grate Inlet

$Q_{50} = x.xx$  cfs - DESIGN YEAR FLOW PER INLET  
See Sh. No's. 136-139 for San. Sewer Plans.  
See Sh. No's. 140-162 for Water Plans.

UTILITIES

Power	Westar
Storm Water Sewer	Wichita Water & Sewer
Telephone	AT&T
Water	Wichita Water & Sewer

CITY OF WICHITA  
EAST KELLOGG  
STORM WATER SEWER PLAN  
STA. 632+00 TO STA. 647+00

3:00 PM  
 2/18/2011  
 J:\CIVIL\07432\DWG\SWS\EK2ML PLAN\EK2ML\_SWPLO2.DWG  
 SURV. - PLOT CADD DES. - DR. - TR. - CKD. - APP.