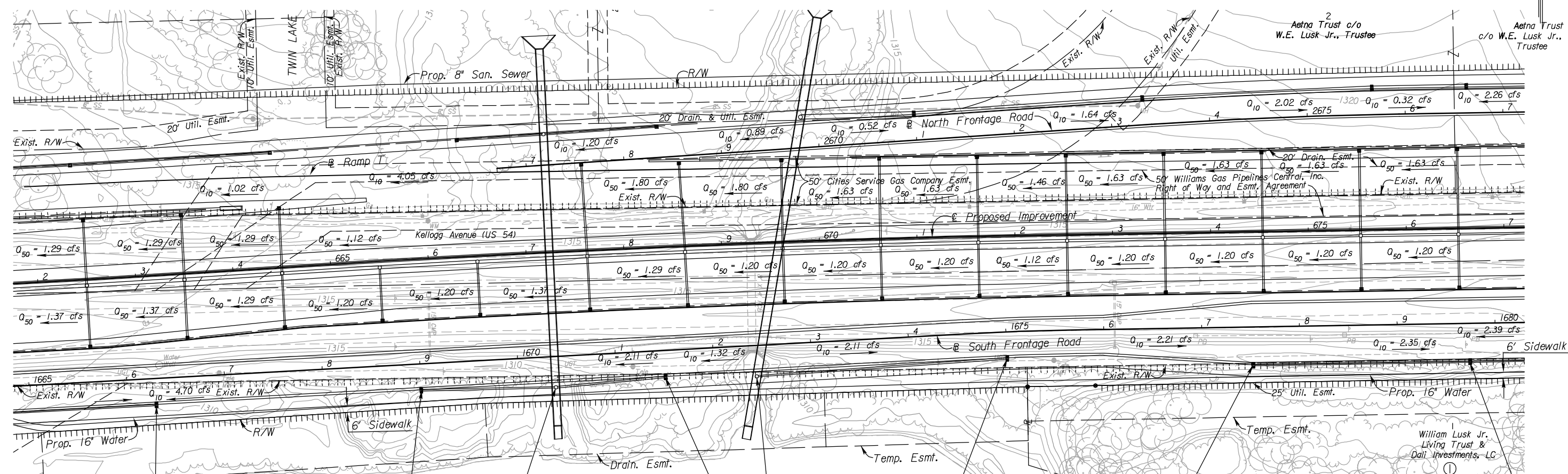


STATE	PROJECT NO.	YEAR	SHEET NO.	TOTAL SHEETS
KANSAS	472 84614	.	113	534



Sta. 12+08.97 Line FS5=
Sta. 1666+29.00 27.00' Rt.
@ South Frontage Road
Const. Curb Inlet, Type 12

Sta. 1+37.60 Line FS6=
Sta. 1668+99.99 27.00' Rt.
@ South Frontage Road
Const. Curb Inlet, Type 12

Sta. 0+00 Line FS6=
Sta. 0+00 Line FS7=
Sta. 1670+40.34 31.48' Rt.
@ South Frontage Road=
Sta. 667+23.77, 138.40 Rt.
Const. Type P (Std.) Manhole Stack
Install 18" x 137.60' RCP (W)
Install 18" x 112.57' RCP (E)

Sta. 1+12.56 Line FS7=
Sta. 1671+50.00 27.00' Rt.
@ South Frontage Road
Const. Curb Inlet, Type 12

Sta. 0+00 Line FS8=
Sta. 1672+43.34 31.49' Rt.
@ South Frontage Road=
Sta. 669+31.24, 135.95 Rt.
Const. Type P (Std.) Manhole Stack
Install 18" x 256.58' RCP (E)

Sta. 2+56.58 Line FS8=
Sta. 1675+00.28 27.00' Rt.
@ South Frontage Road
Const. Curb Inlet, Type 12

Sta. 19+76.91 Line FS9=
Sta. 1677+52.50 39.00' Rt.
@ South Frontage Road
Const. Curb Inlet, Type 12

Sta. 17+55.35 Line FS9=
Sta. 1679+74.06 39.00' Rt.
@ South Frontage Road
Const. Curb Inlet, Type 12
Install 18" x 221.56' RCP (W)

UTILITIES

- Gas2 Southern Star Pipeline
- Gas5 Coffeyville Resources
- Power Westar
- Sanitary Sewer Wichita Water & Sewer
- Storm Water Sewer Wichita Water & Sewer
- Telephone AT&T
- Traffic Signal City of Wichita
- Water Wichita Water & Sewer

$Q_{50} = x.xx$ cfs - DESIGN YEAR FLOW PER INLET
See Sh. No's. 136-139 for San. Sewer Plans.
See Sh. No's. 140-162 for Water Plans.

CITY OF WICHITA
SOUTH FRONTAGE ROAD
STORM WATER SEWER PLAN
STA. 1665+00 TO STA. 1680+00

3:02 PM 2/18/2011 J:\CIVIL\07432\DWG\SWS\EK2ML PLAN\EK2FSSWPL04.DWG SURV. - PLOT CADD DES. - DR. - TR. - CKD. - APP.