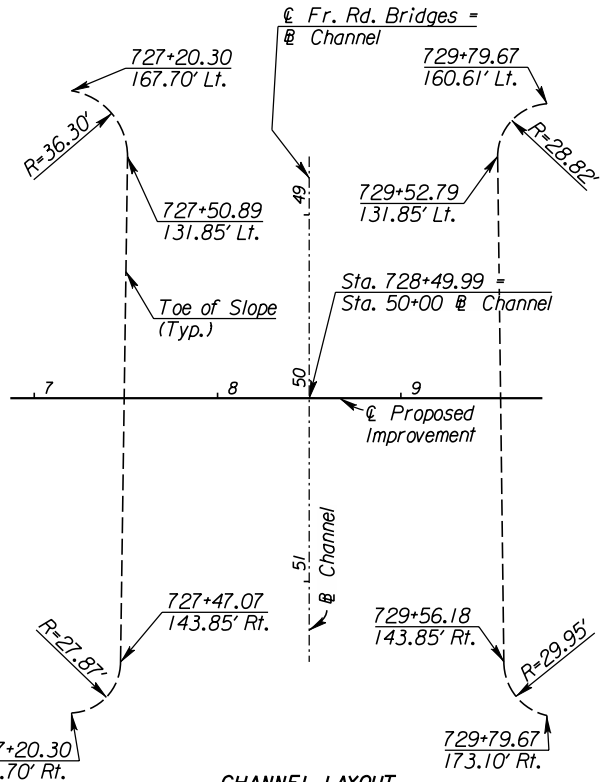
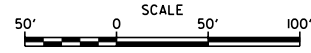
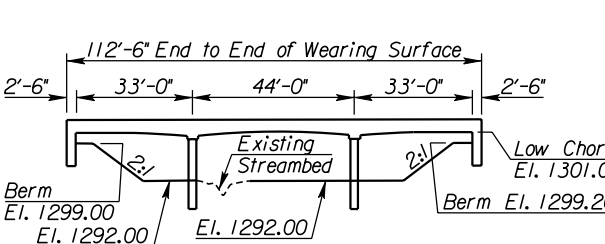


STATE	PROJECT NO.	YEAR	SHEET NO.	TOTAL SHEETS
KANSAS	472 84614	.	200	534



CHANNEL LAYOUT
(Stations/Offsets from C Proposed Improvement)

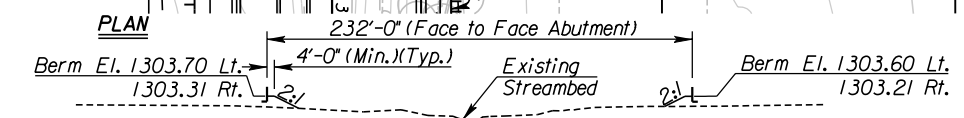
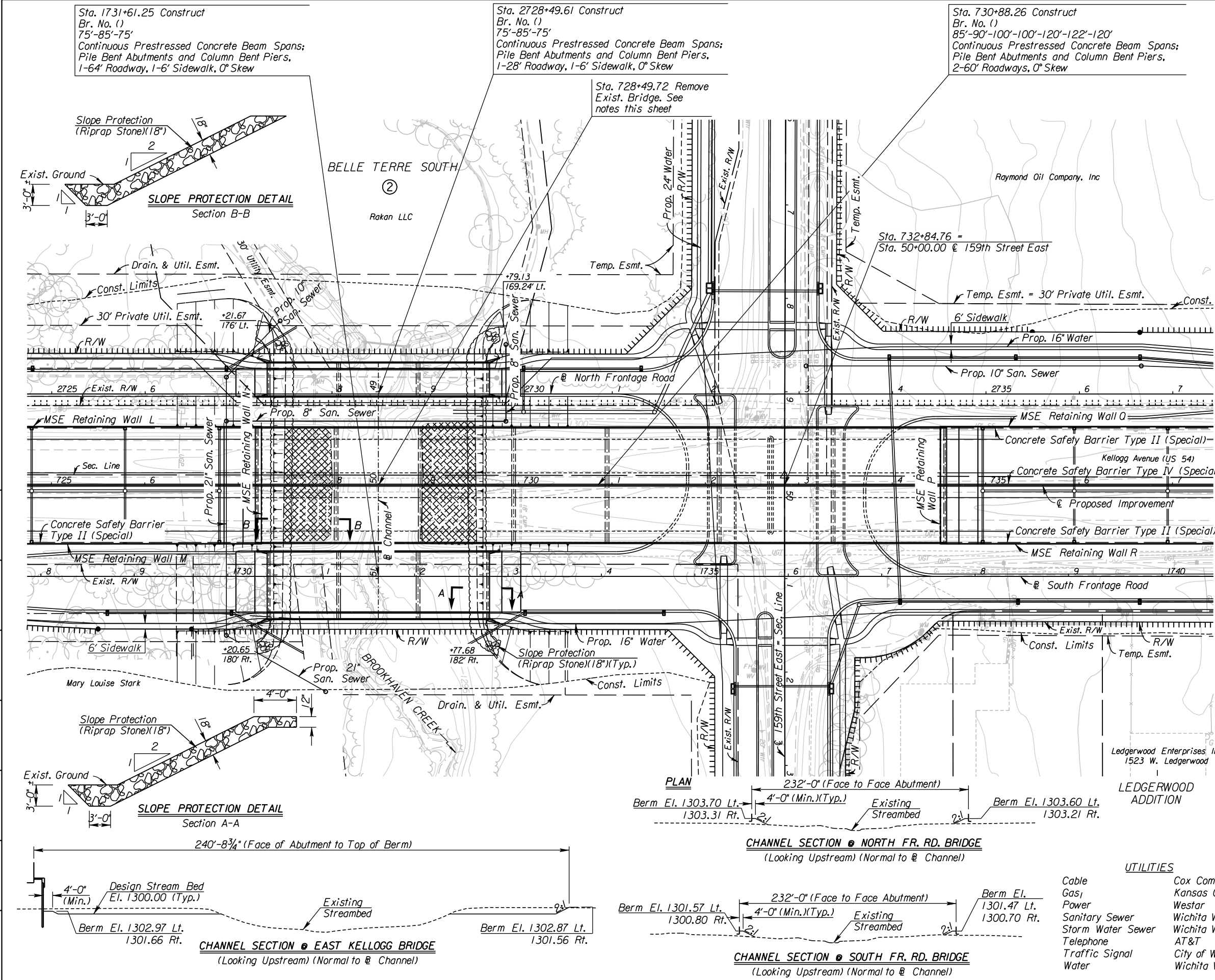
REMOVAL OF EXISTING STRUCTURE
The Contractor shall remove the existing bridge (K.D.O.T. No. XXXX) consisting of 2-41' Roadways. All material removed shall become the property of the Contractor and shall be removed from the project site by the Contractor. Remove all portions of the substructure (pilings, footings, etc.) at least 3' below the existing streambed. All labor and work is included in the bid item "Removal of Existing Structures", Lump Sum.



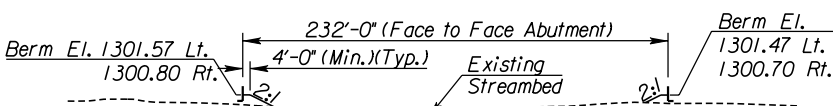
EXISTING EAST KELLOGG HAUNCH SLAB WATERWAY OPENING
(Looking Upstream) (Normal to C Channel)
Waterway Opening = 829 Sq. Ft.

See Sh. No's. 102-130 for SWS Plans.
See Sh. No's. 136-139 for San. Sewer Plans.
See Sh. No's. 140-162 for Water Plans.

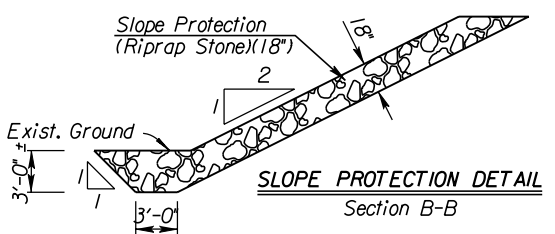
CITY OF WICHITA
EAST KELLOGG & FRONTAGE ROADS
OVER BROOKHAVEN CREEK & 159TH STREET EAST
BR. NO. CONTOUR MAP STA. 2728+49.61
BR. NO. STA. 730+88.26
BR. NO. STA. 1731+61.25



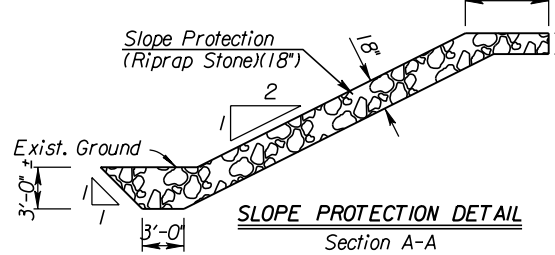
CHANNEL SECTION @ NORTH FR. RD. BRIDGE
(Looking Upstream) (Normal to C Channel)



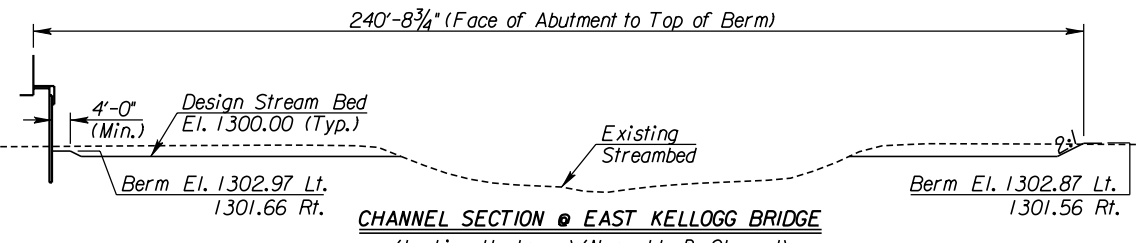
CHANNEL SECTION @ SOUTH FR. RD. BRIDGE
(Looking Upstream) (Normal to C Channel)



SLOPE PROTECTION DETAIL
Section B-B



SLOPE PROTECTION DETAIL
Section A-A



CHANNEL SECTION @ EAST KELLOGG BRIDGE
(Looking Upstream) (Normal to C Channel)

- UTILITIES**
- Cable
 - Gas
 - Power
 - Sanitary Sewer
 - Storm Water Sewer
 - Telephone
 - Traffic Signal
 - Water
 - Cox Communications
 - Kansas Gas Service
 - Westar
 - Wichita Water & Sewer
 - Wichita Water & Sewer AT&T
 - City of Wichita
 - Wichita Water & Sewer

I:\0014 AM
 2/25/2011
 T:\35766A\Cadd\Sheets\Structures\Bridges\159th\EK259CTM.dgn
 SURV. - PLOT CADD DES. - DR. - TR. - APP. - CKD.