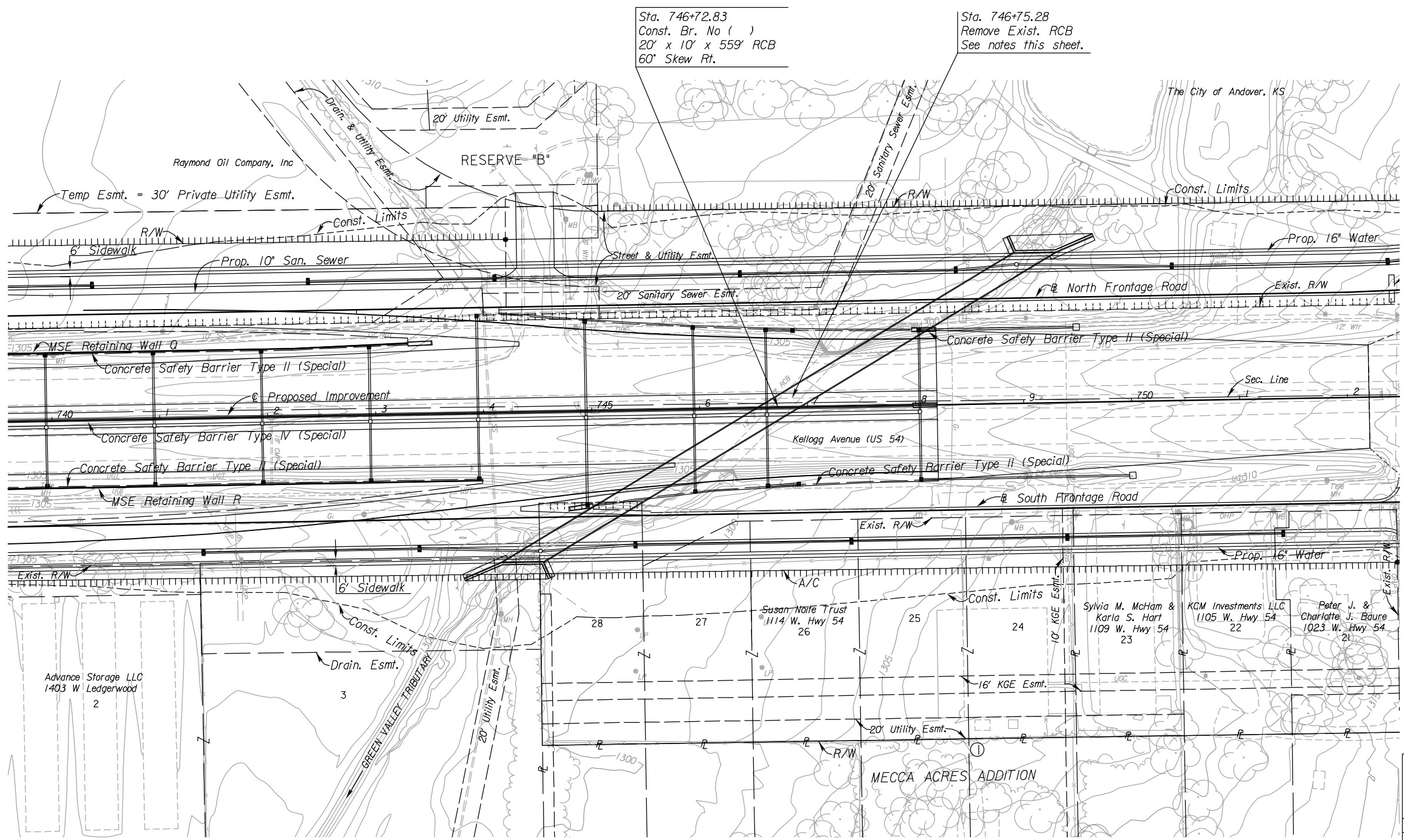
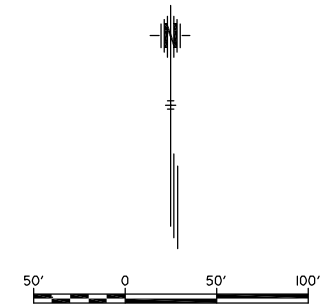


STATE	PROJECT NO.	YEAR	SHEET NO.	TOTAL SHEETS
KANSAS	472 84614	.	214	534



REMOVAL OF EXISTING STRUCTURE

The Contractor shall remove the existing 14'x8' RCB.

All material removed shall become the property of the Contractor and shall be removed from the project site by the Contractor.

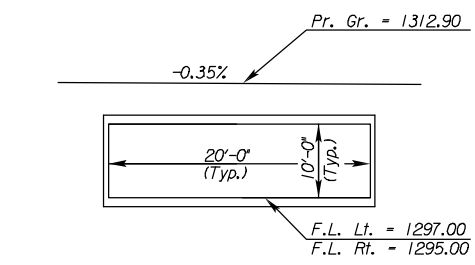
All labor and work is included in the bid item "Removal of Existing Structures", Lump Sum.

DRAINAGE DATA

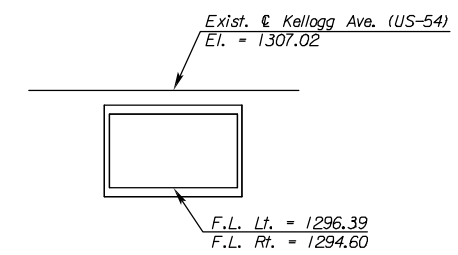
Drainage Area	0.90	Sq. Mi.
Design Frequency	50	Years
Design Discharge	1475	cfs
Design Highwater Elevation	1307.34	Ft.
Q50 Discharge	1475	cfs

Overlapping Elevation (Sta. 747+12)	1310.41	Ft.
Overlapping Discharge	2375	cfs
Overlapping Frequency	>500	Years
Historic High Water Elevation	Unknown	Ft.

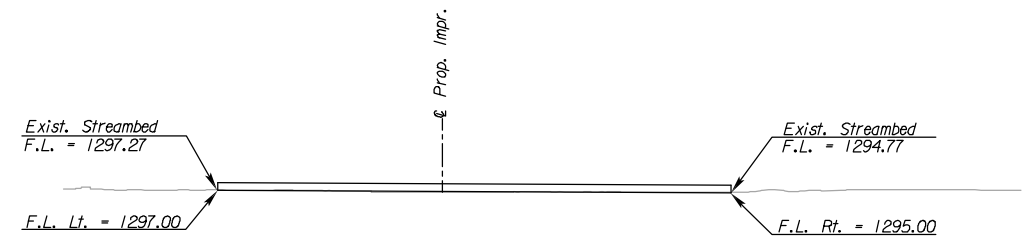
BR. NO. (1) 20' X 10' REINFORCED CONCRETE BOX FIELD CHECK RCB QUANTITIES FOR INFORMATION ONLY		
	QUANTITY	UNIT
Concrete (Grade 4.0)	2,094	C.Y.
Reinforcing Steel (Grade 60)	355,980	LBS
Class III Excavation	864	C.Y.
Foundation Stabilization	275	C.Y.
Granular Backfill (Wingwall)(Set Price)	1	C.Y.
Concrete for Seal Course (Set Price)	1	C.Y.
Removal of Existing Structures	1	L.S.



PROPOSED RCB WATERWAY OPENING
Waterway Opening = 200 Sq. Ft.



EXISTING RCB WATERWAY OPENING
Waterway Opening = 112 Sq. Ft.



EXISTING CHANNEL PROFILE

- UTILITIES**
- Cable
 - Gas
 - Power
 - Sanitary Sewer
 - Storm Water Sewer
 - Telephone
 - Water
 - Cox Communications
 - Kansas Gas Service
 - Westar
 - Wichita Water & Sewer
 - Wichita Water & Sewer
 - AT&T
 - Wichita Water & Sewer

All stations and offsets are to back of curb unless otherwise shown.

See Sh. No's. 102-130 for SWS Plans.
See Sh. No's. 136-139 for San. Sewer Plans.
See Sh. No's. 140-162 for Water Plans.

CITY OF WICHITA
EAST KELLOGG OVER
GREEN VALLEY TRIBUTARY
CONTOUR MAP

4:28 PM 2/18/2011 J:\CIVIL\07432\DWG\BRDG\EK26VCTM.DWG SURV. - PLOT CADD DES. - DR. - TR. - APP. - CKD.