

STATE	PROJECT NO.	YEAR	SHEET NO.	TOTAL SHEETS
KANSAS	472 84614	.	24	534

From Balance Sta. 704+17.26

BALANCE NO. 2 - STA. 704+17.26 to STA. 752+20

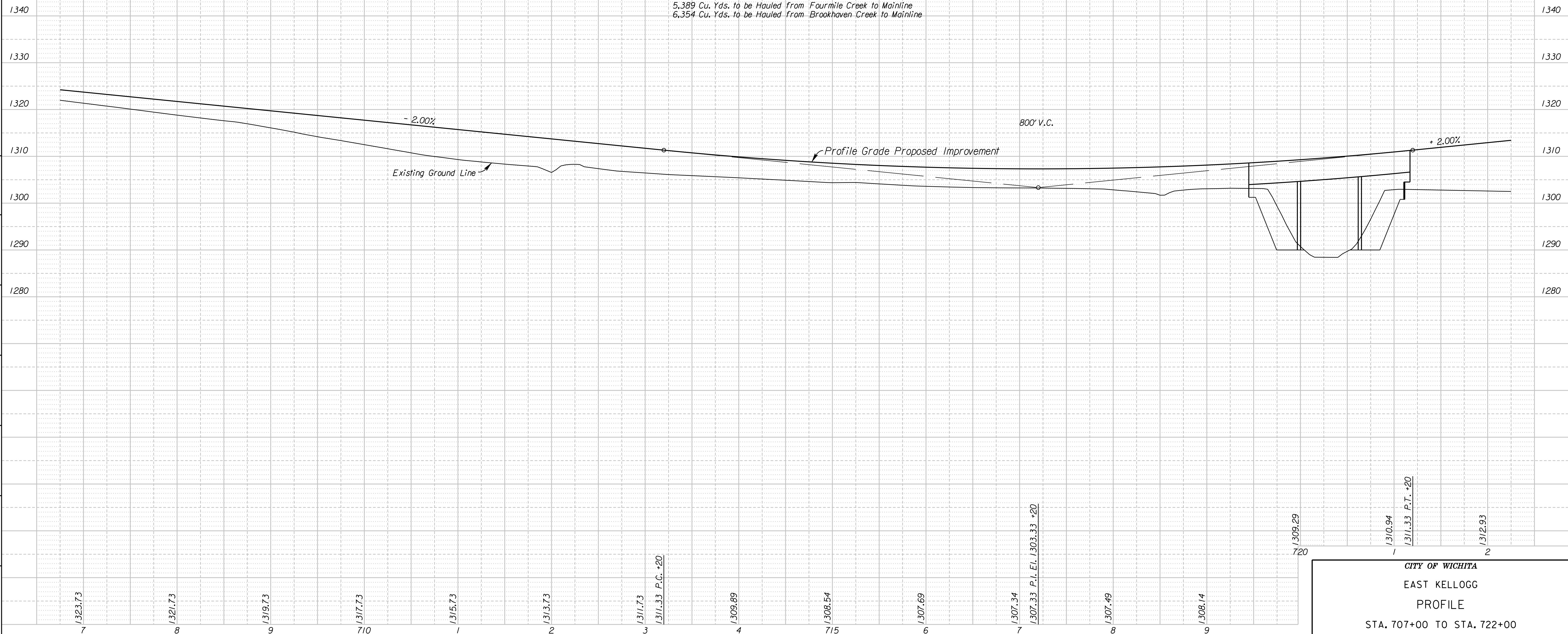
To Balance Sta. 752+20

- † 34,158 Cu. Yds. Common Excavation (VMF = 0.87)
- 299,034 Cu. Yds. Common Excavation (Contractor Furnished) (VMF = 0.87)
- 16,077 Cu. Yds. Existing Pavement to be Wasted (VMF = 1.00)
- \* 294,566 Cu. Yds. Embankment
- 2,157 Cu. Yds. Select Soil

- † Includes: 16,355 Cu. Yds. from North Frontage Road
- 5,294 Cu. Yds. from South Frontage Road
- 2,868 Cu. Yds. from 159th Street
- 6,221 Cu. Yds. from Fourmile Creek
- 1,687 Cu. Yds. from Brookhaven Creek

- \* Includes: 68,937 Cu. Yds. from North Frontage Road
- 58,158 Cu. Yds. from South Frontage Road
- 7,716 Cu. Yds. from 159th Street
- 724 Cu. Yds. from Fourmile Creek
- 628 Cu. Yds. from Brookhaven Creek

- 5,389 Cu. Yds. to be Hauled from Fourmile Creek to Mainline
- 6,354 Cu. Yds. to be Hauled from Brookhaven Creek to Mainline



11:21:26 PM  
 2/22/2011  
 I:\35166A\Cadd\Sheets\Roadway\EK2ML\_PRF07.dgn  
 SURV. PLOT CADD DES. DR. TR. CKD. APP.

CITY OF WICHITA  
 EAST KELLOGG  
 PROFILE  
 STA. 707+00 TO STA. 722+00