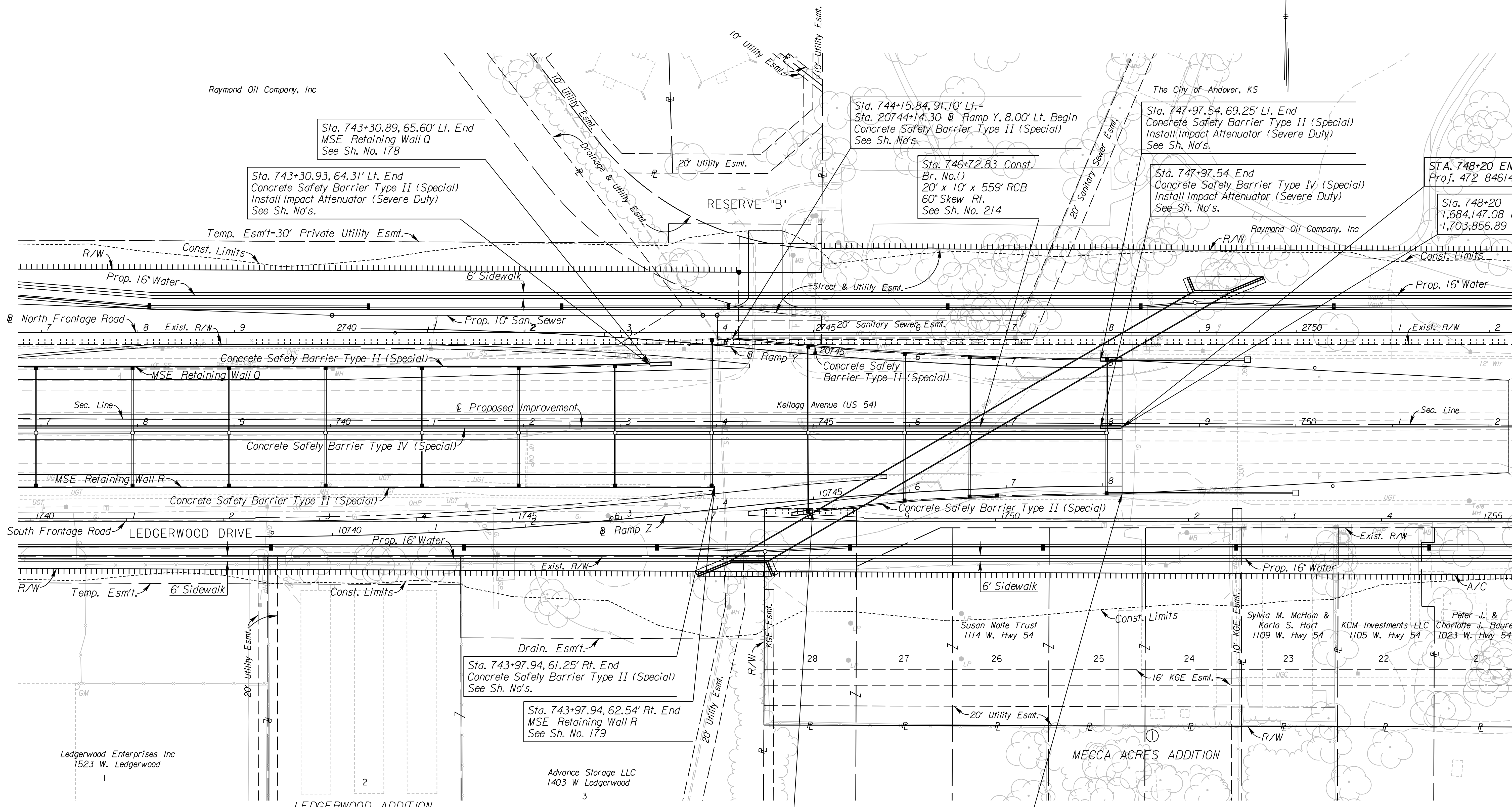


STATE	PROJECT NO.	YEAR	SHEET NO.	TOTAL SHEETS
KANSAS	472 84614	:	27	534



Sta. 743+30.89, 65.60' Lt. End  
MSE Retaining Wall Q  
See Sh. No. 178

Sta. 743+30.93, 64.31' Lt. End  
Concrete Safety Barrier Type II (Special)  
Install Impact Attenuator (Severe Duty)  
See Sh. No's.

Sta. 744+15.84, 91.10' Lt. =  
Sta. 20744+14.30 @ Ramp Y, 8.00' Lt. Begin  
Concrete Safety Barrier Type II (Special)  
See Sh. No's.

Sta. 746+72.83 Const.  
Br. No.( )  
20' x 10' x 559' RCB  
60° Skew Rt.  
See Sh. No. 214

Sta. 747+97.54, 69.25' Lt. End  
Concrete Safety Barrier Type II (Special)  
Install Impact Attenuator (Severe Duty)  
See Sh. No's.

Sta. 747+97.54 End  
Concrete Safety Barrier Type IV (Special)  
Install Impact Attenuator (Severe Duty)  
See Sh. No's.

STA. 748+20 END  
Proj. 472 84614

Sta. 748+20  
1,684,147.08 N  
1,703,856.89 E

Sta. 743+97.94, 61.25' Rt. End  
Concrete Safety Barrier Type II (Special)  
See Sh. No's.

Sta. 743+97.94, 62.54' Rt. End  
MSE Retaining Wall R  
See Sh. No. 179

Sta. 744+99.47, 86.99' Rt. =  
Sta. 10744+98.04 @ Ramp Z, 11.78' Rt. Begin  
Concrete Safety Barrier Type II (Special)  
Install Impact Attenuator (Severe Duty)  
See Sh. No's.

Sta. 748+20, 69.25' Rt. End  
Concrete Safety Barrier Type II (Special)  
See Sh. No's.

- UTILITIES**
- |                   |                       |
|-------------------|-----------------------|
| Cable             | Cox Communications    |
| Gas               | Kansas Gas Service    |
| Power             | Westar                |
| Sanitary Sewer    | Wichita Water & Sewer |
| Storm Water Sewer | Wichita Water & Sewer |
| Telephone         | AT&T                  |
| Water             | Wichita Water & Sewer |

See Sh. No's. 102-130 for SWS Plans.  
See Sh. No's. 136-139 for San. Sewer Plans.  
See Sh. No's. 140-162 for Water Plans.

**CITY OF WICHITA**  
EAST KELLOGG  
PLAN  
STA. 737+00 TO STA. 752+00

I:\02\59 AM  
 2/25/2011  
 T:\35766A\Cadd\Sheets\Roadway\K2ML\PLN09.dgn  
 SURV. PLOT CADD DES. TR. CKD. APP.