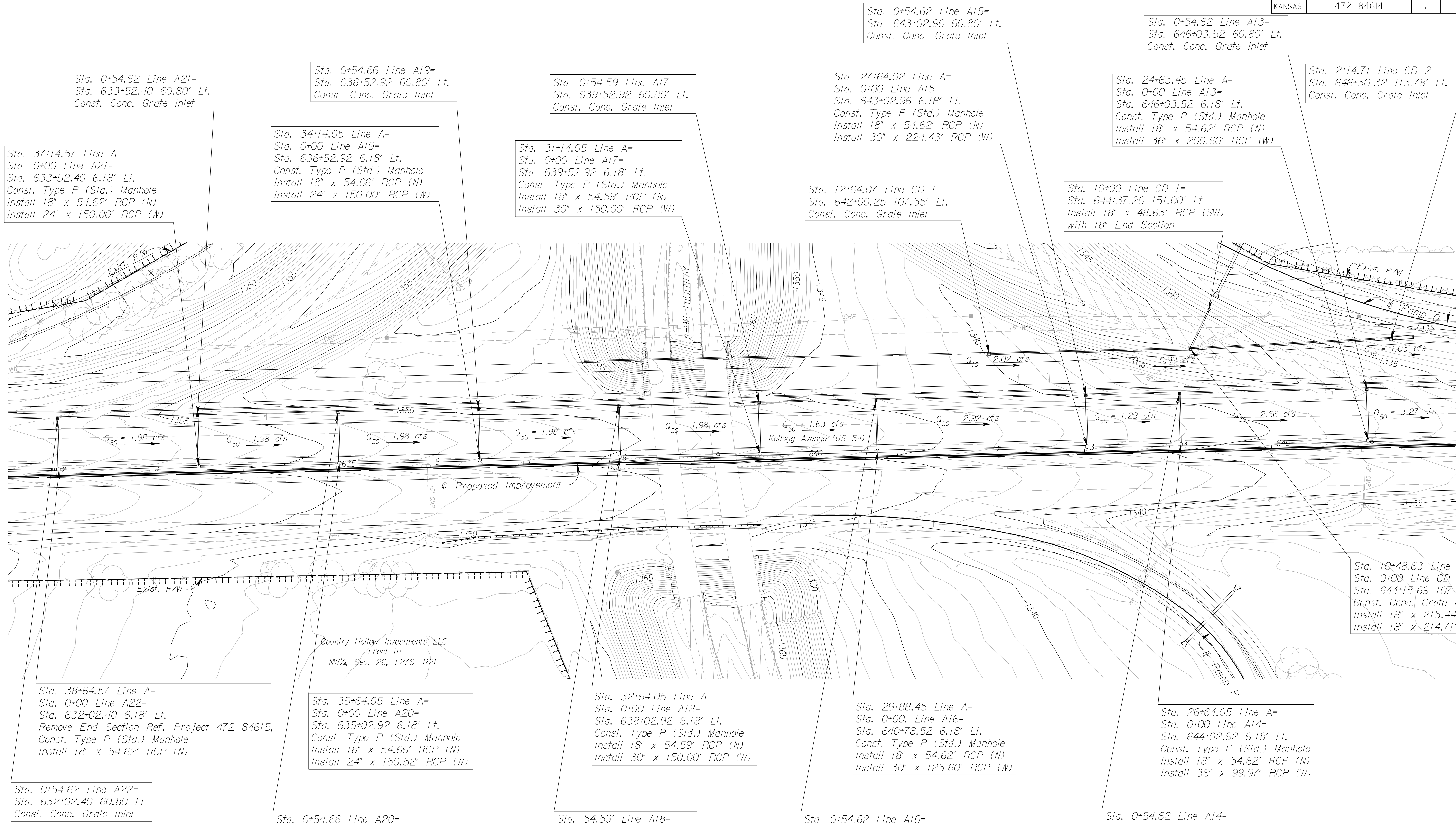
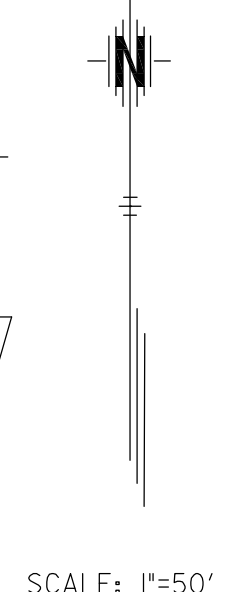


STATE	PROJECT NO.	YEAR	SHEET NO.	TOTAL SHEETS
KANSAS	472 84614	.	102	534



Sta. 0+54.62 Line A21=
Sta. 633+52.40 60.80' Lt.
Const. Conc. Grate Inlet

Sta. 0+54.66 Line A19=
Sta. 636+52.92 60.80' Lt.
Const. Conc. Grate Inlet

Sta. 0+54.59 Line A17=
Sta. 639+52.92 60.80' Lt.
Const. Conc. Grate Inlet

Sta. 0+54.62 Line A15=
Sta. 643+02.96 60.80' Lt.
Const. Conc. Grate Inlet

Sta. 0+54.62 Line A13=
Sta. 646+03.52 60.80' Lt.
Const. Conc. Grate Inlet

Sta. 2+14.71 Line CD 2=
Sta. 646+30.32 113.78' Lt.
Const. Conc. Grate Inlet

Sta. 37+14.57 Line A=
Sta. 0+00 Line A21=
Sta. 633+52.40 6.18' Lt.
Const. Type P (Std.) Manhole
Install 18" x 54.62' RCP (N)
Install 24" x 150.00' RCP (W)

Sta. 34+14.05 Line A=
Sta. 0+00 Line A19=
Sta. 636+52.92 6.18' Lt.
Const. Type P (Std.) Manhole
Install 18" x 54.66' RCP (N)
Install 24" x 150.00' RCP (W)

Sta. 31+14.05 Line A=
Sta. 0+00 Line A17=
Sta. 639+52.92 6.18' Lt.
Const. Type P (Std.) Manhole
Install 18" x 54.59' RCP (N)
Install 30" x 150.00' RCP (W)

Sta. 27+64.02 Line A=
Sta. 0+00 Line A15=
Sta. 643+02.96 6.18' Lt.
Const. Type P (Std.) Manhole
Install 18" x 54.62' RCP (N)
Install 30" x 224.43' RCP (W)

Sta. 24+63.45 Line A=
Sta. 0+00 Line A13=
Sta. 646+03.52 6.18' Lt.
Const. Type P (Std.) Manhole
Install 18" x 54.62' RCP (N)
Install 36" x 200.60' RCP (W)

Sta. 10+00 Line CD 1=
Sta. 644+37.26 151.00' Lt.
Install 18" x 48.63' RCP (SW)
with 18" End Section

Sta. 12+64.07 Line CD 1=
Sta. 642+00.25 107.55' Lt.
Const. Conc. Grate Inlet

Sta. 10+48.63 Line CD 1=
Sta. 0+00 Line CD 2=
Sta. 644+15.69 107.65' Lt.
Const. Conc. Grate Inlet
Install 18" x 215.44' (W)
Install 18" x 214.71' (E)

Sta. 38+64.57 Line A=
Sta. 0+00 Line A22=
Sta. 632+02.40 6.18' Lt.
Remove End Section Ref. Project 472 84615,
Const. Type P (Std.) Manhole
Install 18" x 54.62' RCP (N)

Sta. 35+64.05 Line A=
Sta. 0+00 Line A20=
Sta. 635+02.92 6.18' Lt.
Const. Type P (Std.) Manhole
Install 18" x 54.66' RCP (N)
Install 24" x 150.52' RCP (W)

Sta. 32+64.05 Line A=
Sta. 0+00 Line A18=
Sta. 638+02.92 6.18' Lt.
Const. Type P (Std.) Manhole
Install 18" x 54.59' RCP (N)
Install 30" x 150.00' RCP (W)

Sta. 29+88.45 Line A=
Sta. 0+00 Line A16=
Sta. 640+78.52 6.18' Lt.
Const. Type P (Std.) Manhole
Install 18" x 54.62' RCP (N)
Install 30" x 125.60' RCP (W)

Sta. 26+64.05 Line A=
Sta. 0+00 Line A14=
Sta. 644+02.92 6.18' Lt.
Const. Type P (Std.) Manhole
Install 18" x 54.62' RCP (N)
Install 36" x 99.97' RCP (W)

Sta. 0+54.62 Line A22=
Sta. 632+02.40 60.80' Lt.
Const. Conc. Grate Inlet

Sta. 0+54.66 Line A20=
Sta. 635+02.92 60.80' Lt.
Const. Conc. Grate Inlet

Sta. 54.59' Line A18=
Sta. 638+02.92 60.80' Lt.
Const. Conc. Grate Inlet

Sta. 0+54.62 Line A16=
Sta. 640+78.52 60.80' Lt.
Const. Conc. Grate Inlet

Sta. 0+54.62 Line A14=
Sta. 644+02.92 60.80' Lt.
Const. Conc. Grate Inlet

$Q_{50} = x.xx$ cfs - DESIGN YEAR FLOW PER INLET
See Sh. No's. 136-139 for San. Sewer Plans.
See Sh. No's. 140-162 for Water Plans.

UTILITIES

Power	Westar
Storm Water Sewer	Wichita Water & Sewer
Telephone	AT&T
Water	Wichita Water & Sewer

CITY OF WICHITA
EAST KELLOGG
STORM WATER SEWER PLAN
STA. 632+00 TO STA. 647+00

2:40 PM
 2/18/2011
 J:\CIVIL\07432\DWG\SWS\EK2ML_PLAN\EK2ML_SWPLO2.DWG
 SURV. - PLOT CADD DES. - TR. - CKD. - APP.