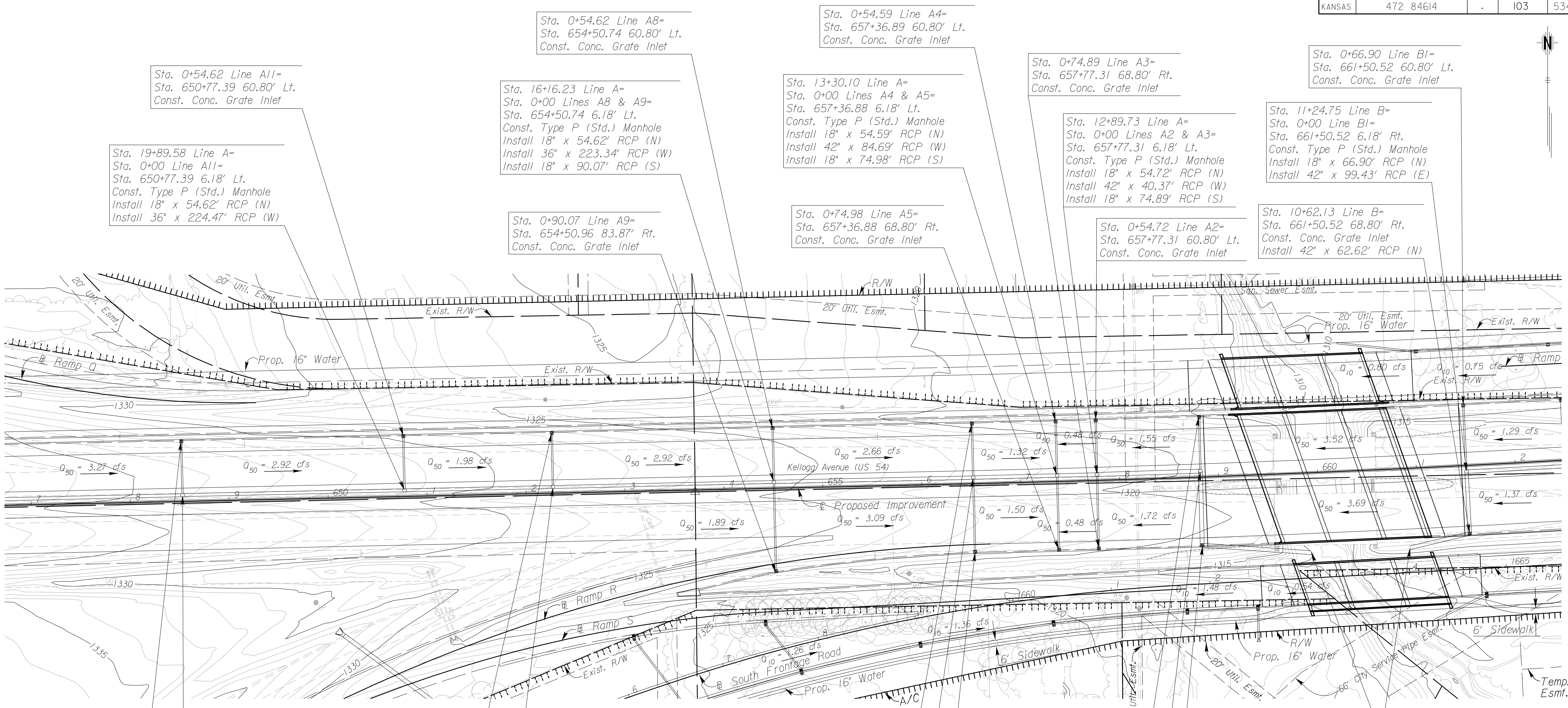


STATE	PROJECT NO.	YEAR	SHEET NO.	TOTAL SHEETS
KANSAS	472 84614	.	103	534



Sta. 19+89.58 Line A=
Sta. 0+00 Line A11=
Sta. 650+77.39 6.18' Lt.
Const. Type P (Std.) Manhole
Install 18" x 54.62' RCP (N)
Install 36" x 224.47' RCP (W)

Sta. 0+54.62 Line A8=
Sta. 654+50.74 60.80' Lt.
Const. Conc. Gate Inlet

Sta. 16+16.23 Line A=
Sta. 0+00 Lines A8 & A9=
Sta. 654+50.74 6.18' Lt.
Const. Type P (Std.) Manhole
Install 18" x 54.62' RCP (N)
Install 36" x 223.34' RCP (W)
Install 18" x 90.07' RCP (S)

Sta. 0+90.07 Line A9=
Sta. 654+50.96 83.87' Rt.
Const. Conc. Gate Inlet

Sta. 0+54.59 Line A4=
Sta. 657+36.89 60.80' Lt.
Const. Conc. Gate Inlet

Sta. 13+30.10 Line A=
Sta. 0+00 Lines A4 & A5=
Sta. 657+36.88 6.18' Lt.
Const. Type P (Std.) Manhole
Install 18" x 54.59' RCP (N)
Install 42" x 84.69' RCP (W)
Install 18" x 74.98' RCP (S)

Sta. 0+74.98 Line A5=
Sta. 657+36.88 68.80' Rt.
Const. Conc. Gate Inlet

Sta. 0+74.89 Line A3=
Sta. 657+77.31 68.80' Rt.
Const. Conc. Gate Inlet

Sta. 12+89.73 Line A=
Sta. 0+00 Lines A2 & A3=
Sta. 657+77.31 6.18' Lt.
Const. Type P (Std.) Manhole
Install 18" x 54.72' RCP (N)
Install 42" x 40.37' RCP (W)
Install 18" x 74.89' RCP (S)

Sta. 0+54.72 Line A2=
Sta. 657+77.31 60.80' Lt.
Const. Conc. Gate Inlet

Sta. 0+66.90 Line B1=
Sta. 661+50.52 60.80' Lt.
Const. Conc. Gate Inlet

Sta. 11+24.75 Line B=
Sta. 0+00 Line B1=
Sta. 661+50.52 6.18' Rt.
Const. Type P (Std.) Manhole
Install 18" x 66.90' RCP (N)
Install 42" x 99.43' RCP (E)

Sta. 10+62.13 Line B=
Sta. 661+50.52 68.80' Rt.
Const. Conc. Gate Inlet
Install 42" x 62.62' RCP (N)

Sta. 0+54.62 Line A12=
Sta. 648+52.92 60.80' Lt.
Const. Conc. Gate Inlet

Sta. 22+14.05 Line A=
Sta. 0+00 Line A12=
Sta. 648+52.92 6.18' Lt.
Const. Type P (Std.) Manhole
Install 18" x 54.62' RCP (N)
Install 36" x 249.40' RCP (W)

Sta. 0+54.62 Line A10=
Sta. 652+27.40 60.80' Lt.
Const. Conc. Gate Inlet

Sta. 18+39.58 Line A=
Sta. 0+00 Line A10=
Sta. 652+27.40 6.18' Lt.
Const. Type P (Std.) Manhole
Install 18" x 54.62' RCP (N)
Install 36" x 150.00' RCP (W)

Sta. 0+54.62 Line A6=
Sta. 656+52.19 60.80' Lt.
Const. Conc. Gate Inlet

Sta. 14+14.78 Line A=
Sta. 0+00 Lines A6 & A7=
Sta. 656+52.19 6.18' Lt.
Const. Type P (Std.) Manhole
Install 18" x 54.63' RCP (N)
Install 42" x 201.45' RCP (W)
Install 18" x 75.05' RCP (S)

Sta. 0+54.69, Line A1=
Sta. 658+81.89, 60.79' Lt.
Const. Conc. Gate Inlet

Sta. 11+85.18 Line A=
Sta. 0+00 Line A1=
Sta. 658+81.89 6.18' Lt.
Const. Type P (Std.) Manhole
Install 48" x 104.55' RCP (W)
Install 18" x 54.69' RCP (N)

Sta. 10+00 Line A=
Sta. 659+90.19 80.61' Rt.
Const. 48" Headwall
Install 48" x 110.20 RCP (W)

Sta. 11+10.20 Line A=
Sta. 658+81.89 68.80' Rt.
Const. Conc. Gate Inlet Stack Over
Reinf. Conc. Manhole
Install 48" x 74.98' RCP (N)

Sta. 10+00 Line B=
Sta. 660+89.70 80.14' Rt.
Const. 42" Headwall
Install 42" x 62.13 RCP (E)

Sta. 0+75.07 Line A7=
Sta. 656+52.19 68.89' Rt.
Const. Conc. Gate Inlet

Q₅₀ = x.xx cfs - DESIGN YEAR FLOW PER INLET
See Sh. No's. 136-139 for San. Sewer Plans.
See Sh. No's. 140-162 for Water Plans.

UTILITIES

Gas2	Southern Star Pipeline
Power	Westar
Sanitary Sewer	Wichita Water & Sewer
Storm Water Sewer	Wichita Water & Sewer
Telephone	AT&T
Water	Wichita Water & Sewer

CITY OF WICHITA
EAST KELLOGG
STORM WATER SEWER PLAN
STA. 647+00 TO STA. 662+00

2:40 PM
 2/18/2011
 J:\CIVIL\07432\DWG\SWSEK2ML_Plan\EK2ML_SWP103.DWG
 SURV. - PLOT CADD DES. - TR. - CKD. - APP.