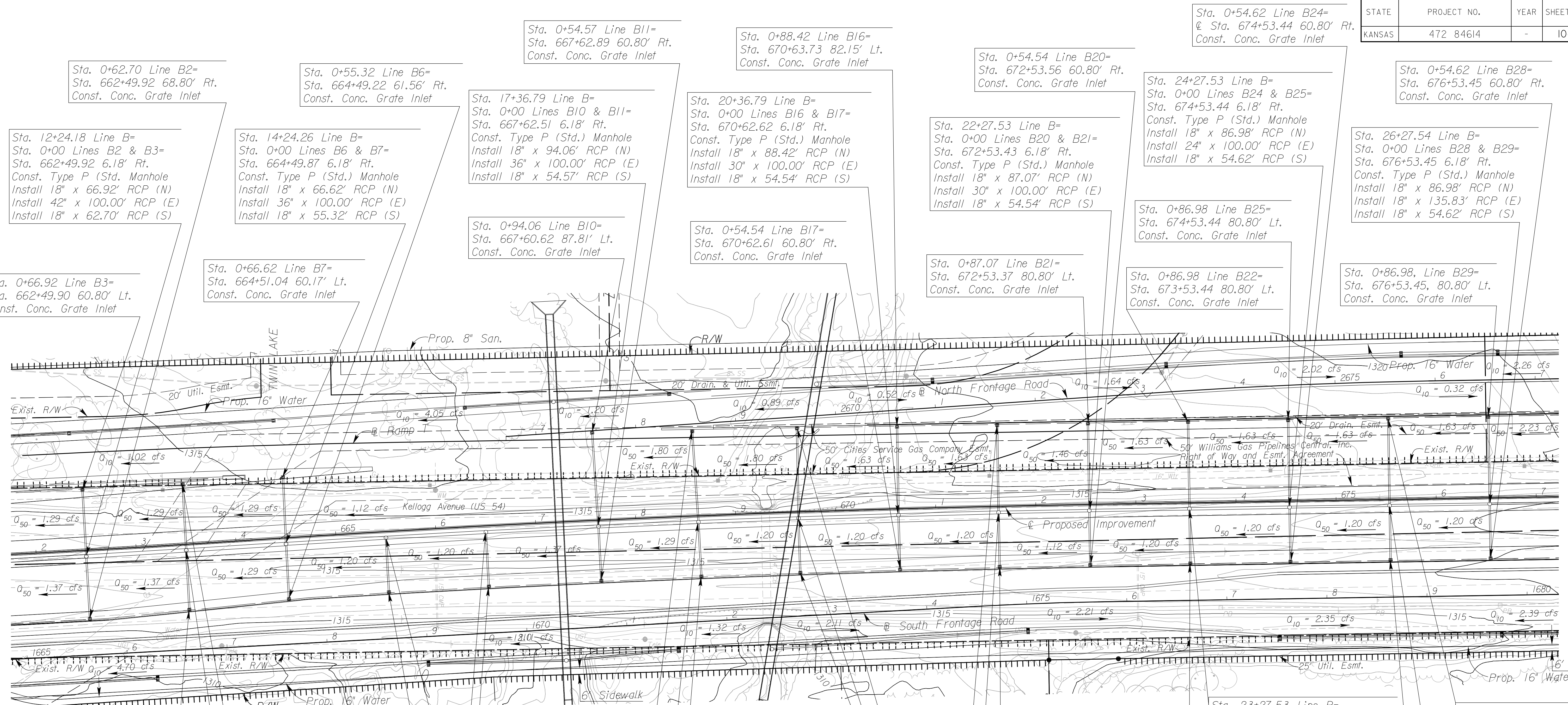


STATE	PROJECT NO.	YEAR	SHEET NO.	TOTAL SHEETS
KANSAS	472 84614	-	104	534



Proposed Manholes:

- Sta. 0+62.70 Line B2= Sta. 662+49.92 68.80' Rt. Const. Conc. Grate Inlet
- Sta. 12+24.18 Line B= Sta. 0+00 Lines B2 & B3= Sta. 662+49.92 6.18' Rt. Const. Type P (Std.) Manhole Install 18" x 66.92' RCP (N) Install 42" x 100.00' RCP (E) Install 18" x 62.70' RCP (S)
- Sta. 14+24.26 Line B= Sta. 0+00 Lines B6 & B7= Sta. 664+49.87 6.18' Rt. Const. Type P (Std.) Manhole Install 18" x 66.62' RCP (N) Install 36" x 100.00' RCP (E) Install 18" x 55.32' RCP (S)
- Sta. 15+24.26 Line B= Sta. 0+00 Line B8= Sta. 665+49.91 6.18' Rt. Const. Type P (Std.) Manhole Install 36" x 100.00' RCP (E) Install 18" x 54.57' RCP (S)
- Sta. 16+24.26 Line B= Sta. 0+00 Line B9= Sta. 666+49.94 6.18' Rt. Const. Type P (Std.) Manhole Install 36" x 112.53' RCP (E) Install 18" x 54.55' RCP (S)
- Sta. 17+36.79 Line B= Sta. 0+00 Lines B10 & B11= Sta. 667+62.51 6.18' Rt. Const. Type P (Std.) Manhole Install 18" x 94.06' RCP (N) Install 36" x 100.00' RCP (E) Install 18" x 54.57' RCP (S)
- Sta. 18+36.79 Line B= Sta. 0+00 Lines B12 & B13= Sta. 668+62.55 6.18' Rt. Const. Type P (Std.) Manhole Install 18" x 90.98' RCP (N) Install 36" x 100.00' RCP (E) Install 18" x 54.56' RCP (S)
- Sta. 19+36.79 Line B= Sta. 0+00 Lines B14 & B15= Sta. 669+62.58 6.18' Rt. Const. Type P (Std.) Manhole Install 18" x 89.97' RCP (N) Install 36" x 100.00' RCP (E) Install 18" x 54.55' RCP (S)
- Sta. 20+36.79 Line B= Sta. 0+00 Lines B16 & B17= Sta. 670+62.62 6.18' Rt. Const. Type P (Std.) Manhole Install 18" x 88.42' RCP (N) Install 30" x 100.00' RCP (E) Install 18" x 54.54' RCP (S)
- Sta. 21+36.79 Line B= Sta. 0+00 Lines B18 & B19= Sta. 671+62.66 6.18' Rt. Const. Type P (Std.) Manhole Install 18" x 87.44' RCP (N) Install 30" x 90.74' RCP (E) Install 18" x 54.54' RCP (S)
- Sta. 22+27.53 Line B= Sta. 0+00 Lines B20 & B21= Sta. 672+53.43 6.18' Rt. Const. Type P (Std.) Manhole Install 18" x 87.07' RCP (N) Install 30" x 100.00' RCP (E) Install 18" x 54.54' RCP (S)
- Sta. 23+27.53 Line B= Sta. 0+00 Lines B22 & B23= Sta. 673+53.44 6.18' Rt. Const. Type P (Std.) Manhole Install 18" x 86.98' RCP (N) Install 30" x 100.00' RCP (E) Install 18" x 54.62' RCP (S)
- Sta. 24+27.53 Line B= Sta. 0+00 Lines B24 & B25= Sta. 674+53.44 6.18' Rt. Const. Type P (Std.) Manhole Install 18" x 86.98' RCP (N) Install 24" x 100.00' RCP (E) Install 18" x 54.62' RCP (S)
- Sta. 25+27.53 Line B= Sta. 0+00 Lines B26 & B27= Sta. 675+53.45 6.18' Rt. Const. Type P (Std.) Manhole Install 18" x 86.98' RCP (N) Install 24" x 100.00' RCP (E) Install 18" x 54.62' RCP (S)
- Sta. 26+27.54 Line B= Sta. 0+00 Lines B28 & B29= Sta. 676+53.45 6.18' Rt. Const. Type P (Std.) Manhole Install 18" x 86.98' RCP (N) Install 18" x 135.83' RCP (E) Install 18" x 54.62' RCP (S)
- Sta. 0+54.57 Line B11= Sta. 667+62.89 60.80' Rt. Const. Conc. Grate Inlet
- Sta. 0+88.42 Line B16= Sta. 670+63.73 82.15' Lt. Const. Conc. Grate Inlet
- Sta. 0+54.54 Line B20= Sta. 672+53.56 60.80' Rt. Const. Conc. Grate Inlet
- Sta. 0+86.98 Line B25= Sta. 674+53.44 80.80' Lt. Const. Conc. Grate Inlet
- Sta. 0+86.98 Line B22= Sta. 673+53.44 80.80' Lt. Const. Conc. Grate Inlet
- Sta. 0+87.07 Line B21= Sta. 672+53.37 80.80' Lt. Const. Conc. Grate Inlet
- Sta. 0+86.98 Line B29= Sta. 676+53.45, 80.80' Lt. Const. Conc. Grate Inlet
- Sta. 0+59.46 Line B5= Sta. 663+49.30 65.56' Rt. Const. Conc. Grate Inlet
- Sta. 0+54.57 Line B8= Sta. 665+49.66 60.83' Rt. Const. Conc. Grate Inlet
- Sta. 0+54.55 Line B9= Sta. 666+49.94 60.80' Rt. Const. Conc. Grate Inlet
- Sta. 0+54.55 Line B15= Sta. 669+62.59 60.80' Rt. Const. Conc. Grate Inlet
- Sta. 0+54.54 Line B19= Sta. 671+62.53 60.80' Rt. Const. Conc. Grate Inlet
- Sta. 0+86.98 Line B26= Sta. 675+53.45 80.80' Lt. Const. Conc. Grate Inlet
- Sta. 0+54.57 Line B12= Sta. 668+60.07 85.86' Lt. Const. Conc. Grate Inlet
- Sta. 0+90.98 Line B12= Sta. 668+60.07 85.86' Lt. Const. Conc. Grate Inlet
- Sta. 0+54.56 Line B13= Sta. 668+63.32 60.80' Rt. Const. Conc. Grate Inlet
- Sta. 0+87.44 Line B18= Sta. 671+63.25 81.26' Lt. Const. Conc. Grate Inlet
- Sta. 0+89.97 Line B14= Sta. 669+64.24 83.70' Lt. Const. Conc. Grate Inlet
- Sta. 0+54.62 Line B27= Sta. 675+53.44 60.80' Rt. Const. Conc. Grate Inlet
- Sta. 0+54.62 Line B28= Sta. 676+53.45 60.80' Rt. Const. Conc. Grate Inlet

$Q_{50} = x.xx$ cfs - DESIGN YEAR FLOW PER INLET
See Sh. No's. 17-18 for Crossroad Structures
See Sh. No's. 136-139 for San. Sewer Plans.
See Sh. No's. 140-162 for Water Plans.

UTILITIES

Gas2	Southern Star Pipeline
Gas5	Coffeyville Resources
Power	Westar
Sanitary Sewer	Wichita Water & Sewer
Storm Water Sewer	Wichita Water & Sewer
Telephone	AT&T
Traffic Signal	City of Wichita
Water	Wichita Water & Sewer

CITY OF WICHITA
EAST KELLOGG
STORM WATER SEWER PLAN
STA. 662+00 TO STA. 677+00

8:24 AM 2/22/2011 J:\CIVIL\07432\DWG\SWS\EK2\ML_PLAN\EK2\ML_SWPLO4.DWG
 SURV. - PLOT CADD DES. - TR. - CKD. - APP.