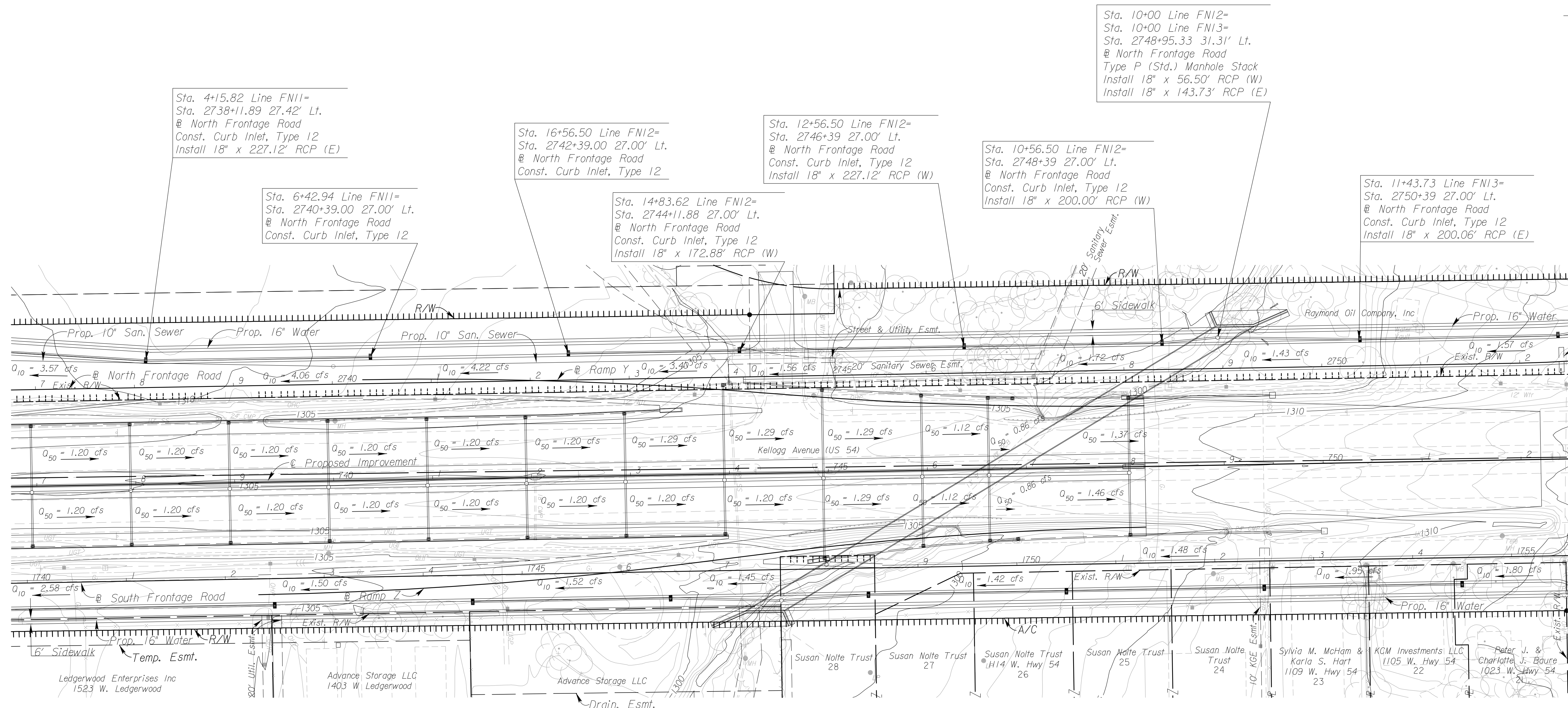
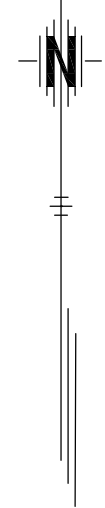


STATE	PROJECT NO.	YEAR	SHEET NO.	TOTAL SHEETS
KANSAS	472 84614	-	125	534



Sta. 4+15.82 Line FN11=
Sta. 2738+11.89 27.42' Lt.
@ North Frontage Road
Const. Curb Inlet, Type 12
Install 18" x 227.12' RCP (E)

Sta. 6+42.94 Line FN11=
Sta. 2740+39.00 27.00' Lt.
@ North Frontage Road
Const. Curb Inlet, Type 12

Sta. 16+56.50 Line FN12=
Sta. 2742+39.00 27.00' Lt.
@ North Frontage Road
Const. Curb Inlet, Type 12

Sta. 14+83.62 Line FN12=
Sta. 2744+11.88 27.00' Lt.
@ North Frontage Road
Const. Curb Inlet, Type 12
Install 18" x 172.88' RCP (W)

Sta. 12+56.50 Line FN12=
Sta. 2746+39 27.00' Lt.
@ North Frontage Road
Const. Curb Inlet, Type 12
Install 18" x 227.12' RCP (W)

Sta. 10+56.50 Line FN12=
Sta. 2748+39 27.00' Lt.
@ North Frontage Road
Const. Curb Inlet, Type 12
Install 18" x 200.00' RCP (W)

Sta. 10+00 Line FN12=
Sta. 10+00 Line FN13=
Sta. 2748+95.33 31.31' Lt.
@ North Frontage Road
Type P (Std.) Manhole Stack
Install 18" x 56.50' RCP (W)
Install 18" x 143.73' RCP (E)

Sta. 11+43.73 Line FN13=
Sta. 2750+39 27.00' Lt.
@ North Frontage Road
Const. Curb Inlet, Type 12
Install 18" x 200.06' RCP (E)

8:28 AM
 2/22/2011
 J:\CIVIL\07432\DWG\SWS\EK2\ML_PLAN\EK2FNSWPLO9.DWG
 SURV. - PLOT CADD DES. - DR. - TR. - APP. - CKD.

- UTILITIES**
- | | |
|-------------------|-----------------------|
| Cable | Cox Communications |
| Gas | Kansas Gas Service |
| Power | Westar |
| Sanitary Sewer | Wichita Water & Sewer |
| Storm Water Sewer | Wichita Water & Sewer |
| Telephone | AT&T |
| Water | Wichita Water & Sewer |

$Q_{50} = x.xx$ cfs - DESIGN YEAR FLOW PER INLET
 See Sh. No's. 136-139 for San. Sewer Plans.
 See Sh. No's. 140-162 for Water Plans.

CITY OF WICHITA
NORTH FRONTAGE ROAD
STORM WATER SEWER PLAN
STA. 2737+00 TO STA. 2752+00