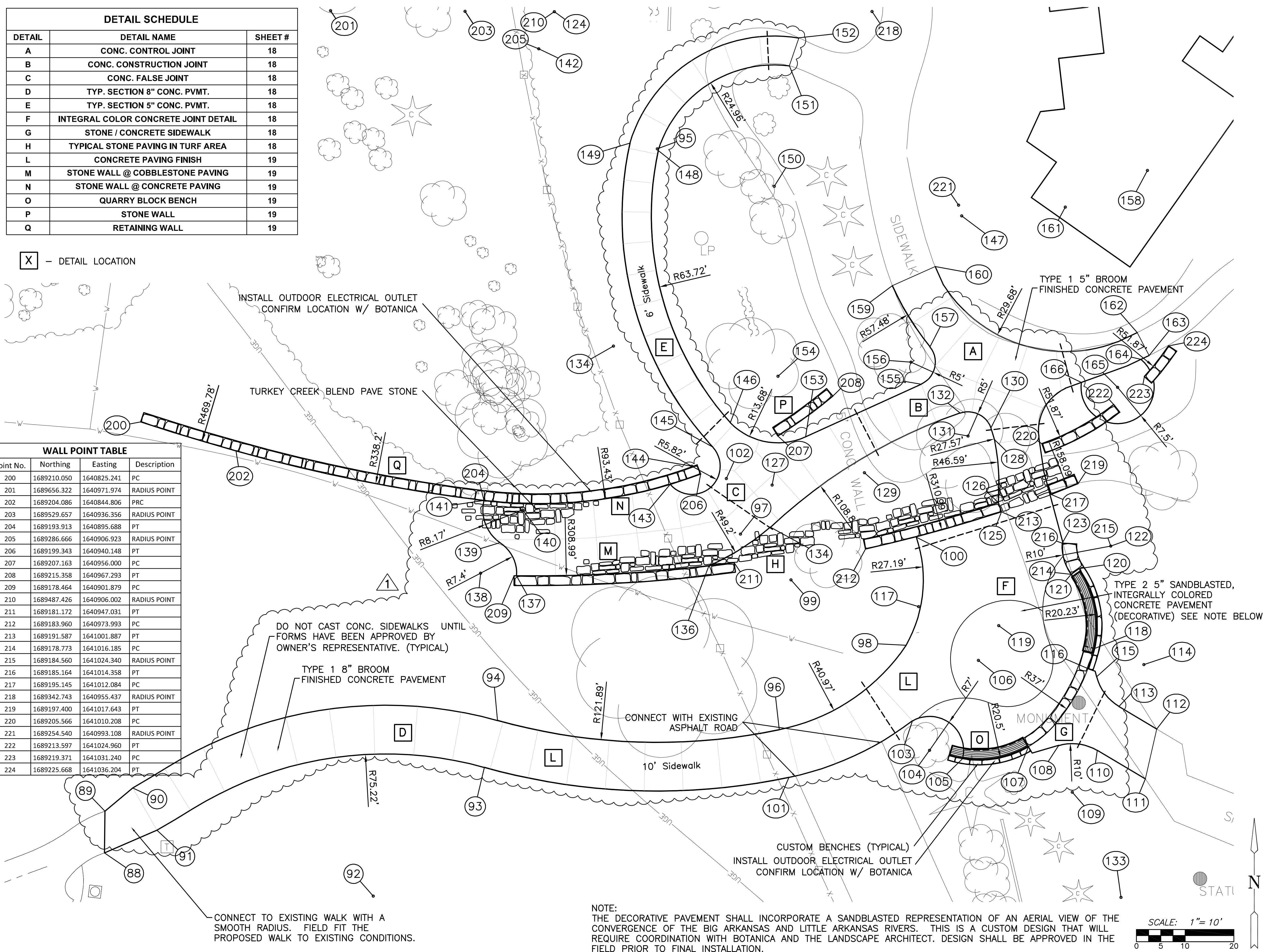


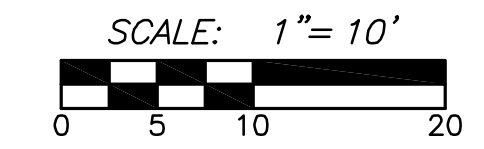
DETAIL SCHEDULE		
DETAIL	DETAIL NAME	SHEET #
A	CONC. CONTROL JOINT	18
B	CONC. CONSTRUCTION JOINT	18
C	CONC. FALSE JOINT	18
D	TYP. SECTION 8" CONC. PVMT.	18
E	TYP. SECTION 5" CONC. PVMT.	18
F	INTEGRAL COLOR CONCRETE JOINT DETAIL	18
G	STONE / CONCRETE SIDEWALK	18
H	TYPICAL STONE PAVING IN TURF AREA	18
L	CONCRETE PAVING FINISH	19
M	STONE WALL @ COBBLESTONE PAVING	19
N	STONE WALL @ CONCRETE PAVING	19
O	QUARRY BLOCK BENCH	19
P	STONE WALL	19
Q	RETAINING WALL	19

X - DETAIL LOCATION

WALL POINT TABLE			
Point No.	Northing	Eastng	Description
200	1689210.050	1640825.241	PC
201	1689656.322	1640971.974	RADIUS POINT
202	1689204.086	1640844.806	PRC
203	1689529.657	1640936.356	RADIUS POINT
204	1689193.913	1640895.688	PT
205	1689286.666	1640906.923	RADIUS POINT
206	1689199.343	1640940.148	PT
207	1689207.163	1640956.000	PC
208	1689215.358	1640967.293	PT
209	1689178.464	1640901.879	PC
210	1689487.426	1640906.002	RADIUS POINT
211	1689181.172	1640947.031	PT
212	1689183.960	1640973.993	PC
213	1689191.587	1641001.887	PT
214	1689178.773	1641016.185	PC
215	1689184.560	1641024.340	RADIUS POINT
216	1689185.164	1641014.358	PT
217	1689195.145	1641012.084	PC
218	1689342.743	1640955.437	RADIUS POINT
219	1689197.400	1641017.643	PT
220	1689205.566	1641010.208	PC
221	1689254.540	1640993.108	RADIUS POINT
222	1689213.597	1641024.960	PT
223	1689219.371	1641031.240	PC
224	1689225.668	1641036.204	PT



NOTE:
 THE DECORATIVE PAVEMENT SHALL INCORPORATE A SANDBLASTED REPRESENTATION OF AN AERIAL VIEW OF THE CONVERGENCE OF THE BIG ARKANSAS AND LITTLE ARKANSAS RIVERS. THIS IS A CUSTOM DESIGN THAT WILL REQUIRE COORDINATION WITH BOTANICA AND THE LANDSCAPE ARCHITECT. DESIGN SHALL BE APPROVED IN THE FIELD PRIOR TO FINAL INSTALLATION.



SIDEWALK POINT TABLE			
Point No.	Northing	Eastng	Description
88	1689121.570	1640817.792	MATCH EXIST.
89	1689130.124	1640817.887	MATCH EXIST.
90	1689134.909	1640823.583	PC
91	1689126.240	1640828.568	PC
92	1689066.666	1640875.515	RADIUS POINT
93	1689139.110	1640895.764	PRC
94	1689148.741	1640898.456	PRC
95	1689266.132	1640931.267	RADIUS POINT
96	1689146.841	1640956.304	PRC
97	1689187.024	1640948.339	RADIUS POINT
98	1689164.187	1640982.349	PRC
99	1689177.624	1640958.711	RADIUS POINT
100	1689186.354	1640984.461	PT
101	1689137.032	1640958.252	PRC
102	1689198.408	1640945.423	RADIUS POINT
103	1689148.684	1640983.623	PRC
104	1689142.622	1640987.143	RADIUS POINT
105	1689140.938	1640993.937	PT
106	1689161.098	1640997.164	RADIUS POINT
107	1689143.357	1641007.435	PC
108	1689143.644	1641013.656	PC
109	1689134.039	1641016.438	RADIUS POINT
110	1689142.628	1641021.561	PT
111	1689136.745	1641031.423	MATCH EXIST.
112	1689146.993	1641033.764	MATCH EXIST.
113	1689151.623	1641026.002	PC
114	1689160.211	1641031.124	RADIUS POINT
115	1689157.727	1641021.438	PT
116	1689159.376	1641019.739	PC
117	1689172.130	1640985.007	RADIUS POINT
118	1689163.487	1641021.001	PRC
119	1689168.226	1641001.320	RADIUS POINT
120	1689179.930	1641017.816	PT
121	1689178.773	1641016.185	PC
122	1689184.560	1641024.340	RADIUS POINT
123	1689185.164	1641014.358	PT
124	1689487.426	1640906.002	RADIUS POINT
125	1689191.587	1641001.887	PT
126	1689193.490	1641001.270	PT
127	1689197.079	1640954.821	RADIUS POINT
128	1689206.432	1641000.460	PRC
129	1689199.613	1640973.752	RADIUS POINT
130	1689208.832	1640999.729	PRC
131	1689207.160	1640995.017	RADIUS POINT
132	1689211.886	1640993.386	PRC
133	1689109.043	1641028.895	RADIUS POINT
134	1689188.423	1640954.488	PRC
135	1689225.606	1640922.275	RADIUS POINT
136	1689180.462	1640941.826	PT
137	1689178.458	1640902.379	PC
138	1689178.992	1640894.995	RADIUS POINT
139	1689185.245	1640898.958	PRC
140	1689191.956	1640903.624	RADIUS POINT
141	1689193.913	1640895.688	PT
142	1689286.666	1640906.923	RADIUS POINT
143	1689197.218	1640933.911	PC
144	1689200.954	1640938.371	RADIUS POINT
145	1689204.876	1640942.670	PRC
146	1689209.857	1640946.247	PRC
147	1689252.354	1640993.727	RADIUS POINT
148	1689265.774	1640931.436	PRC
149	1689267.286	1640925.624	PRC
150	1689258.410	1640955.280	RADIUS POINT
151	1689283.175	1640958.361	MATCH EXIST.
152	1689288.903	1640960.339	MATCH EXIST.
153	1689206.978	1640961.687	PC
154	1689219.426	1640956.020	RADIUS POINT
155	1689217.782	1640985.417	PC
156	1689222.333	1640983.345	RADIUS POINT
157	1689225.483	1640987.228	PRC
158	1689261.690	1641031.869	RADIUS POINT
159	1689238.029	1640979.486	MATCH EXIST.
160	1689241.952	1640988.286	MATCH EXIST.
161	1689254.160	1641014.985	RADIUS POINT
162	1689228.396	1641029.758	MATCH EXIST.
163	1689223.690	1641032.205	MATCH EXIST.
164	1689222.899	1641030.573	PT
165	1689217.168	1641025.735	RADIUS POINT
166	1689218.153	1641018.300	PC

**PLAZA HARDSCAPE AND
 FENCING IMPROVEMENTS
 BOTANICA - THE WICHITA GARDENS**

**PLAZA
 DIMENSION
 PLAN**
 SHEET TITLE
 472-84977
 PROJECT NUMBER

DESIGN BY: **BJH**
 DRAWN BY: **WJ**
 CHECKED BY: **JAG**

ISSUED: **MARCH 8, 2011**
 REVISED: **MARCH 22, 2011**