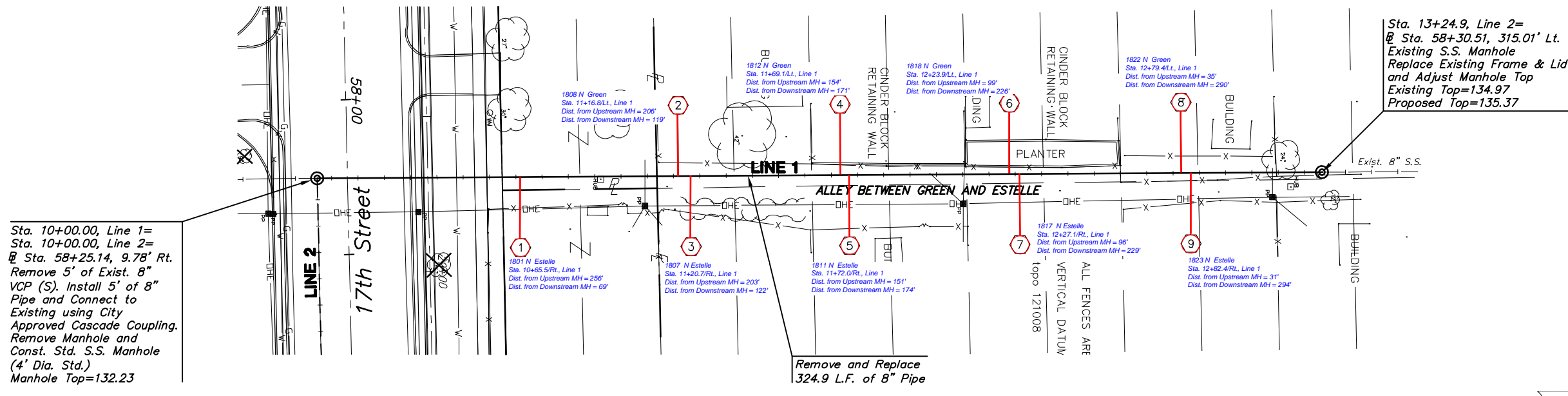


STATE	PROJECT NO.	YEAR	SHEET NO.	SHEETS
KANSAS	87 N-0349-01	2009	64	133

MKEC
ENGINEERING
CONSULTANTS, INC.

411 N. WEBB ROAD
WICHITA, KS. 67206
316 - 684 - 9600

④ Service location. See Sht. 55 for Station and direction.

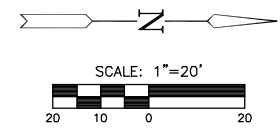


Sta. 10+00.00, Line 1=
Sta. 10+00.00, Line 2=
@ Sta. 58+25.14, 9.78' Rt.
Remove 5' of Exist. 8" VCP (S). Install 5' of 8" Pipe and Connect to Existing using City Approved Cascade Coupling. Remove Manhole and Const. Std. S.S. Manhole (4' Dia. Std.) Manhole Top=132.23

Remove and Replace 324.9 L.F. of 8" Pipe

Sta. 13+24.9, Line 2=
@ Sta. 58+30.51, 315.01' Lt.
Existing S.S. Manhole Replace Existing Frame & Lid and Adjust Manhole Top Existing Top=134.97 Proposed Top=135.37

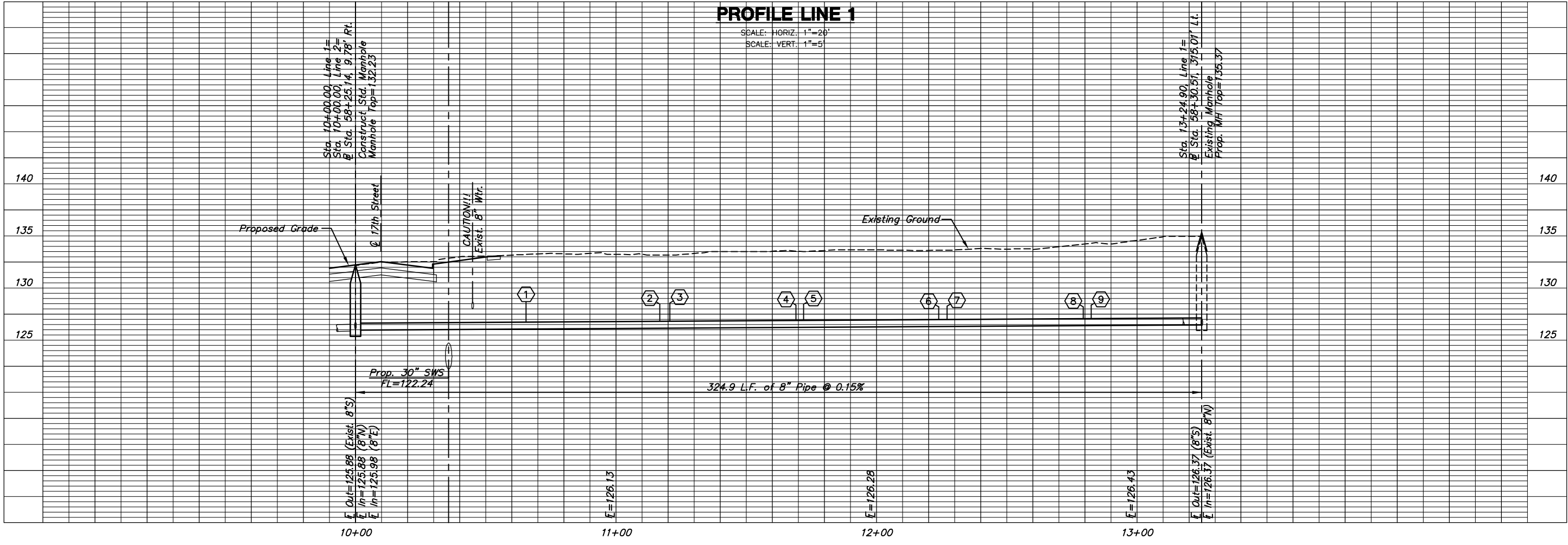
Built per plan



PLAN LINE 1

PROFILE LINE 1

SCALE: HORIZ. 1"=20'
SCALE: VERT. 1"=5'



**17th STREET
FROM GROVE TO HILLSIDE**

Sanitary Sewer Line 1

SHEET TITLE
87 N-0349-01
PROJECT NUMBER

DESIGN BY JRA
DRAWN BY DMU
CHECKED BY JRA

ISSUED
May 28, 2009
REVISED

SHEET NO.
64 of 133

PL0717B, Thursday, May 28, 2009 10:02:30AM

J:\CIVIL\04179 DWG\SA\04179 B 01.DWG