

PUBLIC STORM WATER SEWER #659

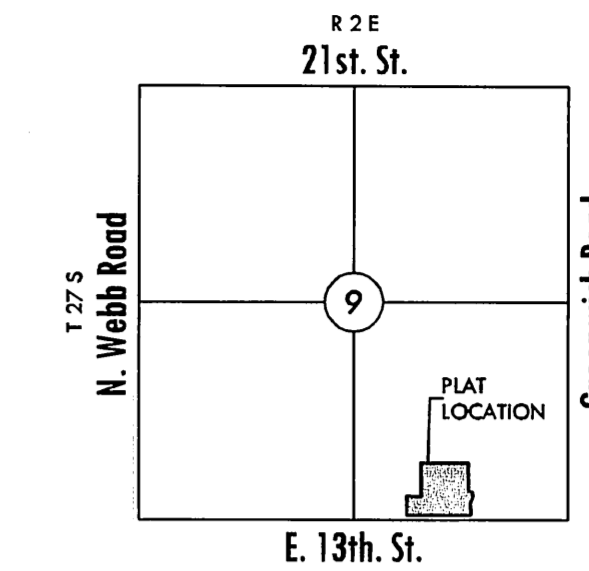
GREENWICH OFFICE PARK SECOND ADDITION

PROJECT NO. 468-84725

THE CITY OF WICHITA, KANSAS
JAMES L. ARMOUR, CITY ENGINEER

OCA NO. 751494

MKEC
ENGINEERING
CONSULTANTS, INC.
411 N. WEBB ROAD
WICHITA, KS. 67206
316-684-9600



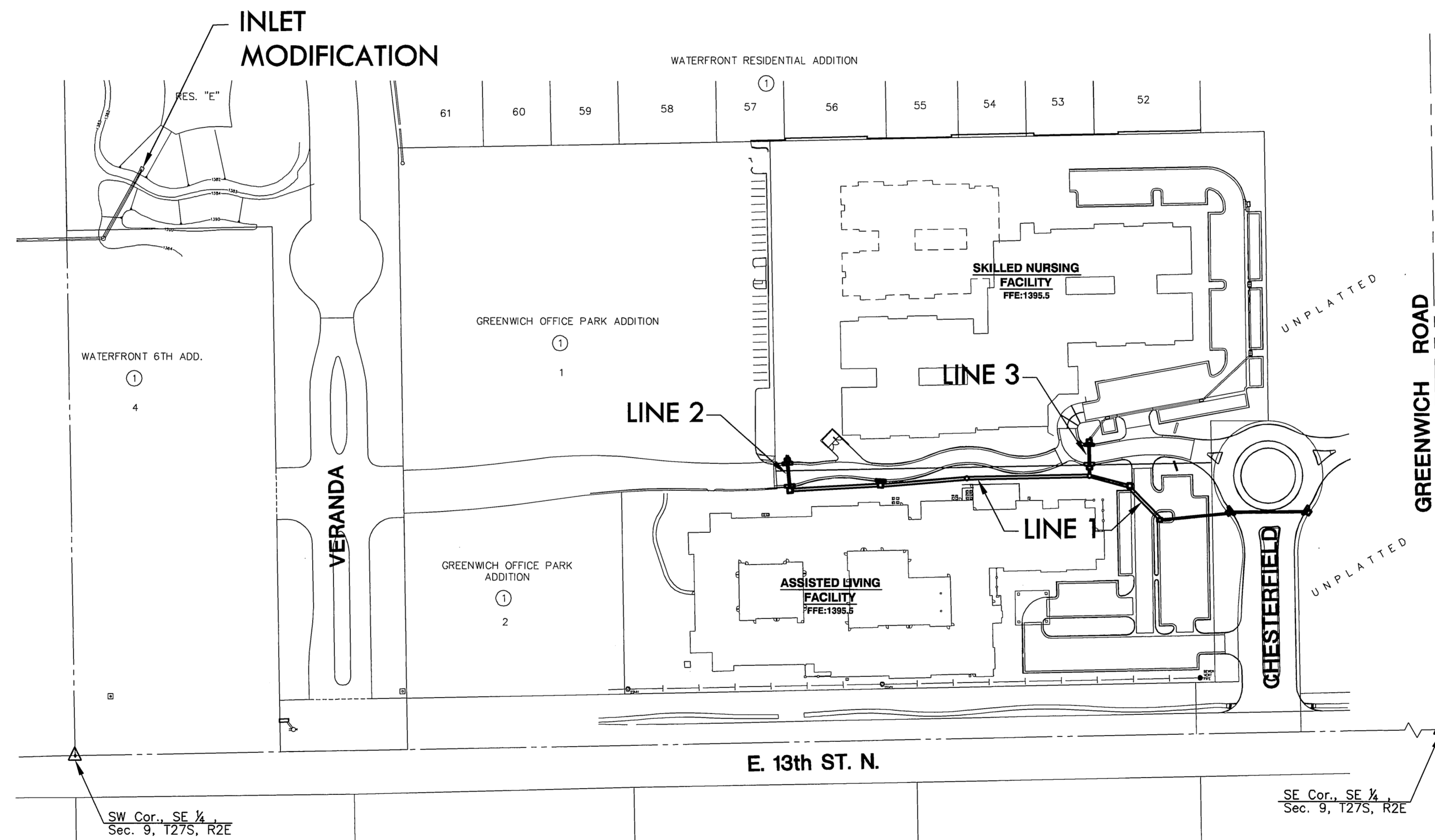
VICINITY MAP
No Scale

GENERAL NOTES

- UNLESS SHOWN OR OTHERWISE STATED ON THESE DRAWINGS, MATERIALS AND CONSTRUCTION SHALL BE IN ACCORDANCE WITH THE CITY OF WICHITA STANDARD SPECIFICATIONS.
 - THE TOPS OF INLETS AND MANHOLES AS NOTED ON THE PLANS MAY VARY SO AS TO MEET PROPOSED TOP OF CURB ELEVATIONS OR PAVEMENT ELEVATIONS. THE FIELD ENGINEER SHALL LOCATE INLETS AND MANHOLES WITH REFERENCE TO PROPOSED PAVING PLANS OF THE PERTINENT STREETS.
 - ALL CONCRETE SHALL BE STANDARD PAVING MIX UNLESS OTHERWISE NOTED.
 - THE CONTRACTOR SHALL BE RESPONSIBLE FOR PRESERVING PROPERTY IRONS. THE CONTRACTOR SHALL BE REQUIRED TO RE-ESTABLISH ANY PROPERTY IRONS WHICH ARE DAMAGED OR DESTROYED BY HIS CONSTRUCTION OPERATIONS. SUCH IRONS SHALL BE RE-ESTABLISHED BY A LICENSED LAND SURVEYOR IN ACCORDANCE WITH STATE LAWS.
 - TREES TO BE REMOVED ARE MARKED \otimes . ALL TREES WHICH IN THE OPINION OF THE FIELD ENGINEER CAN BE SAVED, SHALL BE SAVED.
 - CONTRACTOR SHALL NOTIFY UTILITY COMPANIES OF CONSTRUCTION SCHEDULING.
 - EXISTING UTILITIES AND THEIR LOCATIONS, AS SHOWN ON THE PLANS REPRESENT THE BEST INFORMATION OBTAINABLE FOR DESIGN. LOCATION INFORMATION HAS BEEN OBTAINED FROM THE VARIOUS COMPANIES AND IS EITHER FROM COMPANY UTILITY DRAWINGS OR COMPANY PROVIDED FIELD LOCATIONS. THE PLAN LOCATIONS SHOWN ARE NOT GUARANTEED. ADDITIONAL EXISTING UTILITIES MAY ALSO BE ENCOUNTERED.
 - CONTRACTOR WILL BE REQUIRED TO PROVIDE A MINIMUM ADVANCE NOTICE OF SEVENTY-TWO (72) HOURS TO UTILITY COMPANIES TO STARTING ANY EXCAVATION AS FOLLOWS:

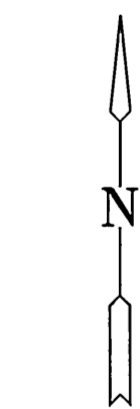
KANSAS ONE-CALL 800-344-7233
OR 687-2470 (LOCAL WICHITA)
- THE CONTRACTOR MUST NOTIFY THE FOLLOWING IN CASE OF EMERGENCY:
- | | |
|-------------------------------|--------------|
| COX COMMUNICATIONS (CABLE) | 262-0661 |
| WESTAR (ELECTRIC) | 383-8600 |
| KANSAS GAS SERVICE (GAS) | 832-3101 |
| SBC (TELEPHONE) | 800-870-8390 |
| CITY OF WICHITA WATER & SEWER | 262-6000 |
- RUBBLE FROM THE REMOVAL OF MISCELLANEOUS STRUCTURES AND EXCESS EXCAVATION WHICH IS TO BE WASTED SHALL BE DISPOSED OF ON SITES TO BE PROVIDED BY THE CONTRACTOR. THESE SITES SHALL BE APPROVED BY THE ENGINEER AS TO SUITABILITY, APPEARANCE AND SITE LOCATION. LOCATIONS THAT, IN THE OPINION OF THE ENGINEER, WILL LEAVE AN UNSIGHTLY APPEARANCE WILL NOT BE APPROVED. ALL DISPOSAL SITES MUST BE APPROVED BY THE KANSAS DEPARTMENT OF HEALTH AND ENVIRONMENT. MATERIAL EITHER STOCKPILED OR DISPOSED OF IN A FLOOD PLAIN WOULD REQUIRE A KANSAS STATE BOARD OF AGRICULTURE PERMIT. ANY MATERIAL DUMPED IN WATERS OF THE UNITED STATES OR WETLANDS IS SUBJECT TO U.S. CORPS OF ENGINEERS PERMITTING REGULATIONS. ANY MATERIAL BURIED OR STOCKPILED BEYOND APPROVED CONSTRUCTION LIMITS WOULD REQUIRE ADDITIONAL ARCHAEOLOGICAL INVESTIGATIONS UNLESS BURIED IN A PREVIOUSLY APPROVED BORROW LOCATION.
 - CONTRACTOR TO COORDINATE WORK WITH OTHER UTILITY AND/OR PAVING CONTRACTORS ON SITE.
 - CONTRACTOR SHALL RESEED AND MULCH ALL DISTURBED AREAS. COST SHALL BE CONSIDERED SUBSIDIARY TO SITE RESTORATION. SEE SHEET
 - DEVELOPER/OWNER FOR THIS PROJECT IS:

LEGEND SENIOR LIVING
8415 E 21st ST N, SUITE 100
WICHITA, KANSAS, 67206
CONTACT - TIM BUCHANAN
316-616-6288
 - CONTRACTOR TO REFER TO SWPPP FILED ON SITE FOR EROSION/SEDIMENT CONTROL.



INDEX TO DRAWINGS

SHEET NO.	DESCRIPTION
1	TITLE SHEET
2-4	DETAILS
5	INLET MODIFICATION
6	LINE 1
7	LINE 2
8	LINE 3
9-13	BUBBLE MAP
14	BMP SHEETS
	PLAT

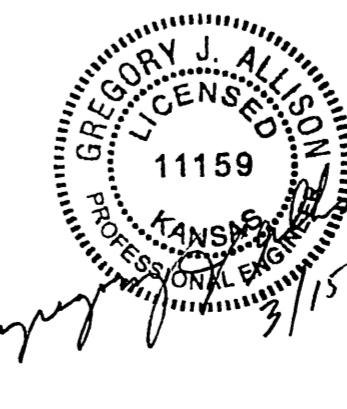


1"=100'

BENCHMARKS

"□" on top of curb at N. end of 2nd island N. of 13th St. N. on Veranda, 461' N. of 13th St. & centerline Veranda.
Elev. = 1387.03 NAVD 88

Railroad spike in N. side of power pole, 930' E. of centerline Veranda & 39' N. of centerline 13th St. N.
Elev. = 1399.01 NAVD 88



STORM WATER SEWER #659
**GREENWICH OFFICE PARK
SECOND ADDITION**

TITLE SHEET

SHEET TITLE
468-84725
PROJECT NUMBER

JTC | LES | DFL
DESIGNED | DRAWN | CHECKED

ISSUED
March 2011

REVISED

SHEET NO.

1 of 14