

# PAVING IMPROVEMENTS

Lots 1-18, Block 1  
**Casa Bella 3rd Addition**  
 PROJECT NO. 472-84945  
 O.C.A. NO. 766261

## GENERAL NOTES

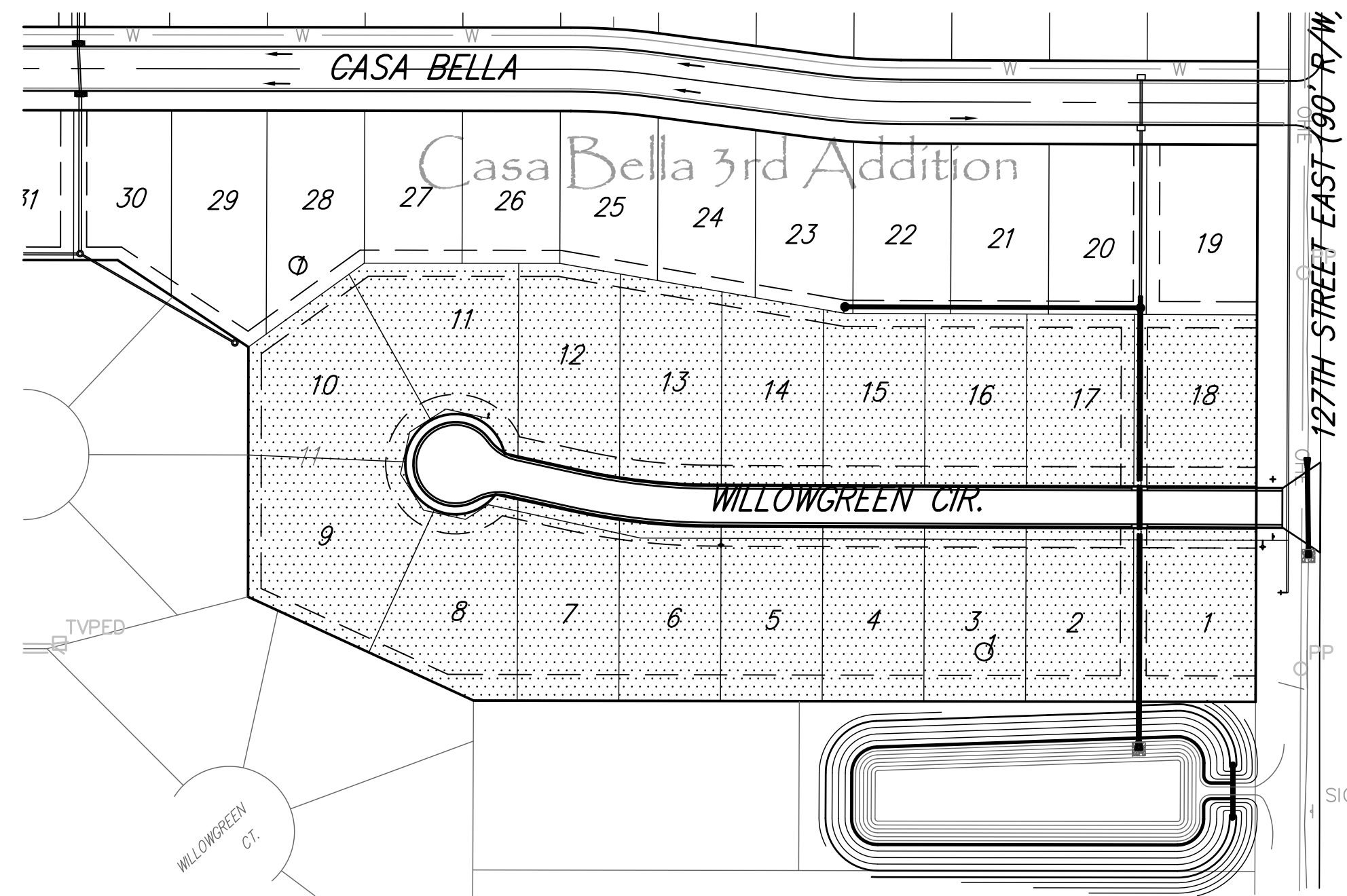
- Contractor will be required to provide a minimum advance notice of seventy-two (72) hours to utility companies prior to starting any excavation as follows:

Kansas One-Call 687-2470

The Contractor must notify the following in case of an emergency:

Cox Communications	260-7204
Kansas Gas Service	888-482-4950
Westar	383-8600
AT&T	1-800-286-8313
City of Wichita Water Department	262-6000
City of Wichita Sewer Maintenance	262-6000

- Underground utility service lines and overhead utility pole lines are to be adjusted as necessary by others prior to construction unless the plans specifically call for their adjustment by the Contractor or unless the plans specifically identify a utility to be adjusted by its owner during construction. Existing utilities and their location, as shown on the plans, represent the best information obtainable for design. Location information has been obtained from the various utility companies and is either from company record drawings or company-provided field locations. The Contractor will be required to work around existing utilities within the right-of-way which do not conflict with proposed construction.
- Rubble from the removal of miscellaneous structures and excess excavation which is to be wasted shall be disposed of on sites to be provided by the Contractor. These sites shall be approved by the Engineer as to suitability, appearance and site location. Locations that, in the opinion of the Engineer, will leave an unsightly appearance will not be approved.
- All disposal sites must be approved by the Kansas Department of Health and Environment. Material either stockpiled or disposed of in a flood plain would require a Kansas State Board of Agriculture permit. Any material dumped in waters of the United States or wetlands is subject to U.S. Corps permitting regulations. Any material buried or stockpiled beyond approved of Engineers construction limits would require additional archeological investigations unless buried in a previously approved borrow location.
- The Engineer shall take field ties to all quarter section corners. The Contractor shall set a City survey monument in the required location where such quarter section corners fall within the limits of pavement construction. Survey monuments will be furnished by the City. The Engineer will accurately locate and install the iron at the quarter section corner. This work will not be paid for directly, but shall be considered subsidiary to the other pay items of work in the contract.
- The Contractor shall give all property owners and/or tenants of developed property directly abutting the construction of this project a minimum of ten (10) days advance notice prior to start of construction.
- Any trash, rubble or other debris encountered at any time during the construction of this project shall be removed from the site. This work shall be incidental to the bid item for site clearing and restoration.
- A point file is available for the City of Wichita survey crew. Ruggles and Bohm will provide an upload of a staking file to City crews upon request.
- Subdivision Bench Marks shall be "Flat Survey Markers No. 8134-08 3" top diameter" provided by Kansas Blue Print Co., Inc. Bench mark installation cost to be subsidiary to curb & gutter.

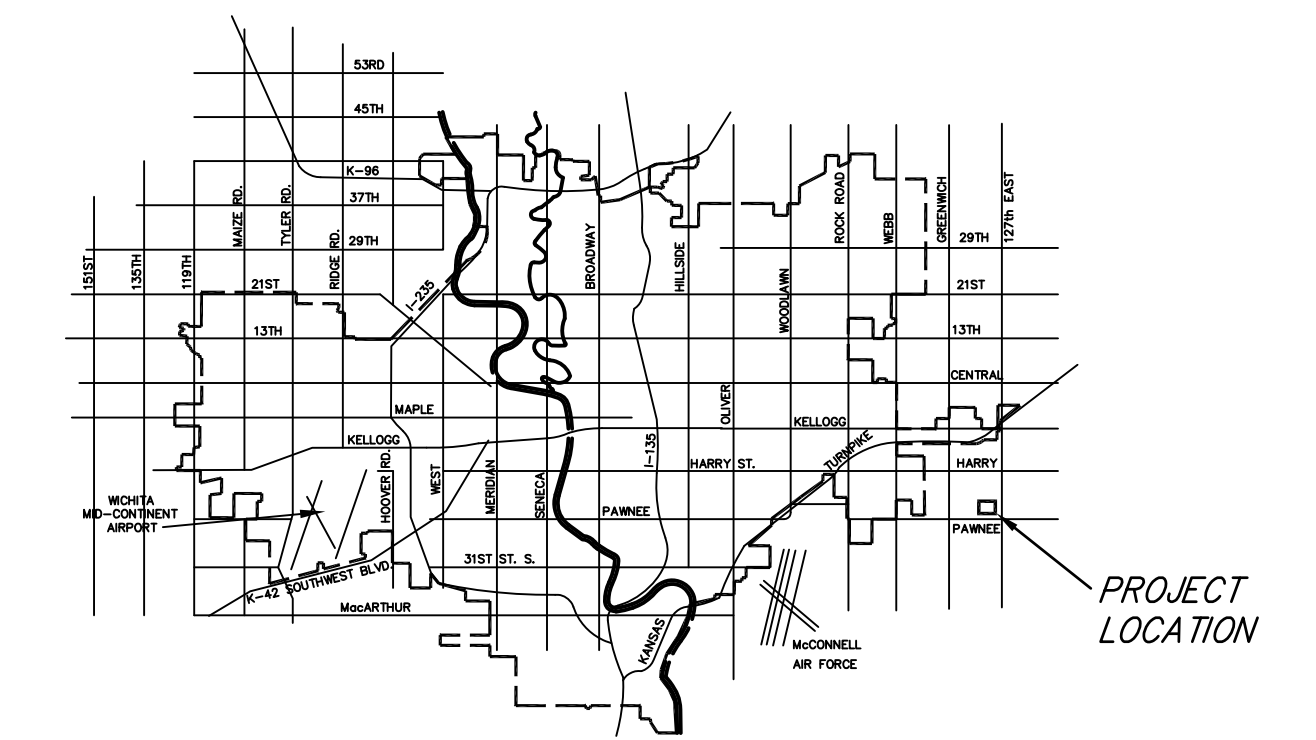
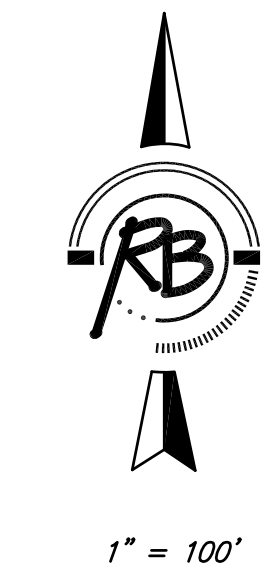


## BENCH MARKS

BENCH MARK #1: SRB BRASS DISC 55.45' E. & 5.13'  
 S. OF THE N.W. COR., SW1/4, SEC. 35, T27S, R2E.  
 ELEV.=1348.35 (NGVD) = 160.95 (CITY DATUM)

## INDEX OF SHEETS

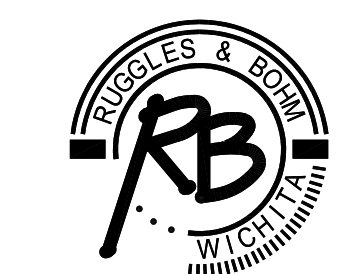
- TITLE SHEET
- TYPICAL SECTION
4. WILLOWGREEN CIR. PLAN/PROFILE
- CUL-DE-SAC GRADING
- 6-7. STORM SEWER PLAN/PROFILE
- POND PLANS
- WEIR WALL DETAILS
- TYPE 1A INLET DETAILS
- TYPE P MANHOLE WITH BEEHIVE TOP DETAILS
- EROSION CONTROL PLAN
- 13-17. EROSION CONTROL BMP DETAILS
- SIGNING DETAILS
- KEY MAP
- 20-21. CROSS SECTIONS
- CASA BELLA 3RD FINAL PLAT



## VICINITY MAP

 IMPROVEMENT DISTRICT

CITY OF WICHITA, KANSAS  
 JAMES ARMOUR, P.E. - CITY ENGINEER



Ruggles & Bohm, P.A.  
 Engineering, Surveying, Land Planning  
 924 North Main (316) 264-8008  
 Wichita, Kansas 67203 (316) 264-4621 fax  
 www.rbkansas.com E-mail: info@rbkansas.com