

**LEGEND**

- 1338.32 Proposed Pavement Elevation
- 42.4 Proposed Ground Elevation
- ↘ Denotes direction of Drainage

**EROSION CONTROL GENERAL NOTES:**

TEMPORARY SEDIMENT CONTROL MEASURES (SILT FENCE, CONSTRUCTION ENTRANCE, ETC.) SHALL BE MAINTAINED UNTIL ALL CONTRIBUTING AREAS ARE GRADED AND STABILIZED.

A COMPLETE PLAN FOR MAINTENANCE OF CONTROL DEVICES IS CONTAINED WITHIN THE STORM WATER POLLUTION PREVENTION PLAN WHICH IS PART OF THE SITE WORK SPECIFICATIONS.

DUST CONTROL ON SITE SHALL BE MINIMIZED BY SPRAYING WATER ON DRY AREAS OF THE SITE. THE USE OF OILS AND OTHER PETROLEUM BASED OR TOXIC LIQUIDS FOR DUST SUPPRESSION IS STRICTLY PROHIBITED.

IF THE MAJORITY OF MUD OR DIRT IS NOT REMOVED FROM EXITING TRAFFIC, CONTRACTOR SHALL ESTABLISH VEHICLE WASH AREAS AT CONSTRUCTION TRAFFIC EXIT POINTS AND VEHICLE OPERATION SHALL BE INTERCEPTED AND TRAPPED BEFORE WASH WATER IS ALLOWED TO BE DISCHARGED OFFSITE. RINSE-OFF WILL NOT BE ALLOWED OUTSIDE THE PROJECT CONSTRUCTION LIMITS.

REPAIR ERODED AREAS IMMEDIATELY. RESEED AS NECESSARY TO MAINTAIN GOOD VEGETATIVE COVER, MOW VEGETATIVE COVER TO MAINTAIN A MAXIMUM HEIGHT OF SIX INCHES, AND REMOVE TRASH AS NEEDED.

INSPECT AND REPAIR THE COLLECTION SYSTEM (I.E. CATCH BASINS, PIPING, SWALES, RIP RAP, ETC.) AFTER SIGNIFICANT RAINFALL TO MAINTAIN PROPER FUNCTIONING.

ALL WASH WATER (CONCRETE TRUCK, VEHICLE CLEANING, EQUIPMENT CLEANING, ETC.) SHALL BE DISPOSED OF IN A MANNER THAT PREVENTS CONTACT BETWEEN THESE MATERIALS AND STORM WATER THAT IS DISCHARGED FROM THE SITE.

ALL MATERIALS SPILLED, DROPPED, WASHED, OR TRACKED FROM VEHICLES ONTO ROADWAYS OR INTO STORM DRAINS MUST BE REMOVED IMMEDIATELY.

CONTRACTOR SHALL REMOVE ALL TEMPORARY EROSION CONTROL DEVICES/DITCHES AND DISPOSE OF PER LOCAL CODES ONCE THE SITE HAS BEEN STABILIZED. CONTRACTOR SHALL REFER TO THE GRADING PLAN FOR FINAL GRADES.

LAND DISTURBING ACTIVITIES SHALL NOT COMMENCE UNTIL APPROVAL TO DO SO HAS BEEN RECEIVED BY GOVERNING AUTHORITIES.

THE GENERAL CONTRACTOR SHALL STRICTLY ADHERE TO THE SWPPP DURING CONSTRUCTION OPERATIONS.

NO LAND CLEARING OR GRADING SHALL BEGIN UNTIL ALL EROSION CONTROL MEASURES HAVE BEEN INSTALLED.

ALL EXPOSED AREAS SHALL BE SEEDED AS SPECIFIED WITHIN 14 DAYS OF FINAL GRADING.

SHOULD CONSTRUCTION STOP FOR LONGER THAN 14 DAYS, THE SITE SHALL BE SEEDED AS SPECIFIED.

AFTER EVERY SIGNIFICANT RUNOFF PRODUCING RAINFALL EVENT OF 1/2" OR GREATER AND AT LEAST ONCE A WEEK:

- A. INSPECT THE DETENTION BASIN SYSTEM FOR SEDIMENT ACCUMULATION, EROSION, TRASH ACCUMULATION, VEGETATED COVER, AND GENERAL CONDITION.
- B. CHECK AND CLEAR THE OUTFALL DEVICE OF ANY OBSTRUCTIONS.

THIS PLAN SHALL NOT BE CONSIDERED ALL INCLUSIVE AS THE GENERAL CONTRACTOR SHALL TAKE ALL NECESSARY PRECAUTIONS TO PREVENT SOIL SEDIMENT FROM LEAVING THE SITE.

GENERAL CONTRACTOR SHALL COMPLY WITH ALL STATE AND LOCAL ORDINANCES THAT APPLY.

ADDITIONAL EROSION AND SEDIMENT CONTROL MEASURES WILL BE INSTALLED IF DEEMED NECESSARY BY ON SITE INSPECTION.

GENERAL CONTRACTOR SHALL BE RESPONSIBLE TO TAKE WHATEVER MEANS NECESSARY TO ESTABLISH PERMANENT SOIL STABILIZATION.

ALL WORK TO BE DONE IN STRICT ACCORDANCE WITH CITY OF WICHITA'S STANDARD SITE SPECIFICATIONS.

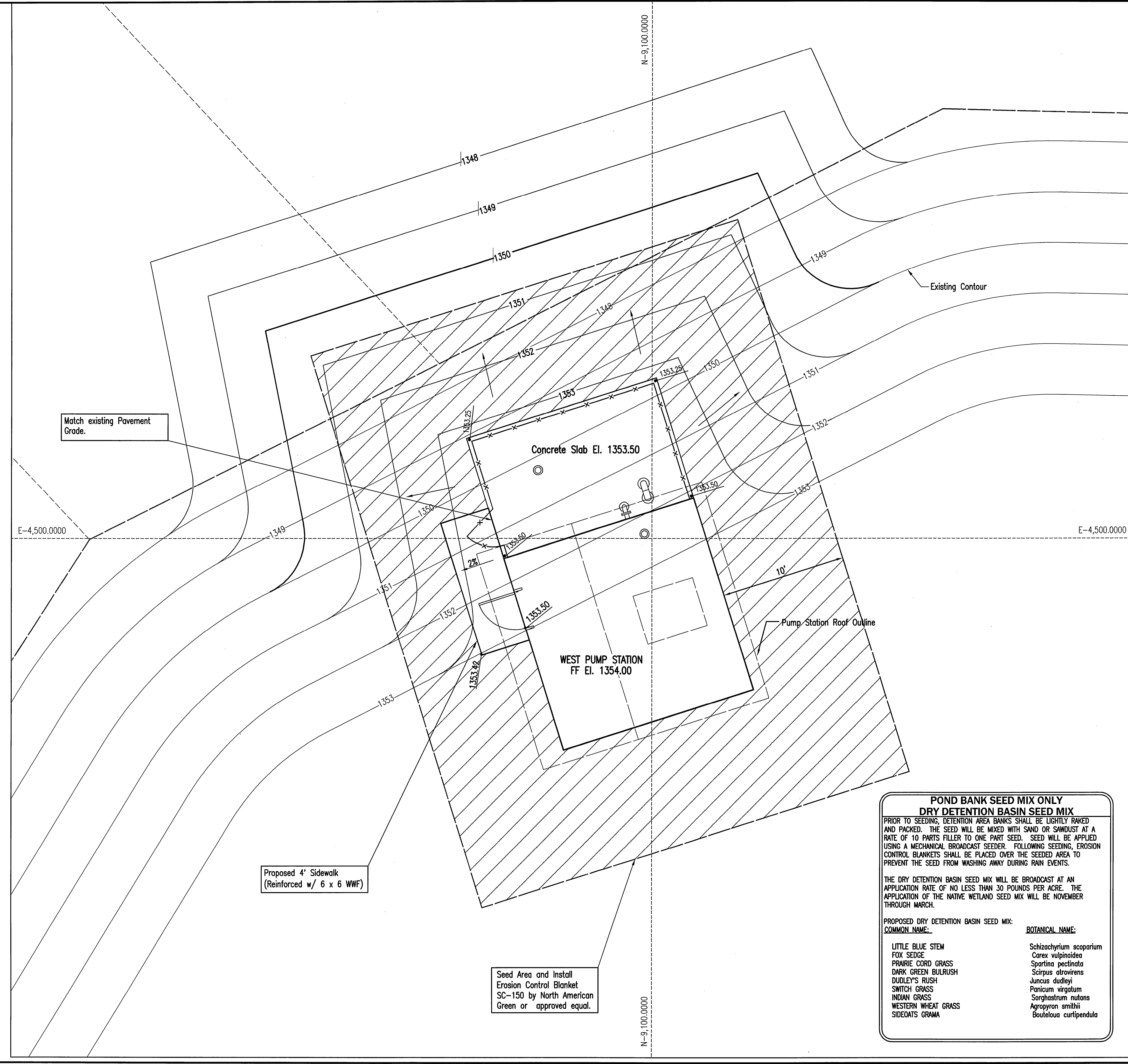
**POND BANK SEED MIX ONLY  
DRY DETENTION BASIN SEED MIX**

PRIOR TO SEEDING, DETENTION AREA BANKS SHALL BE LIGHTLY RAKED AND PACKED. THE SEED WILL BE MIXED WITH SAND OR SAND/DUST AT A RATE OF 10 PARTS FILLER TO ONE PART SEED. SEED WILL BE APPLIED USING A MECHANICAL BROADCAST SEEDER. FOLLOWING SEEDING, EROSION CONTROL BLANKETS SHALL BE PLACED OVER THE SEEDED AREA TO PREVENT THE SEED FROM WASHING AWAY DURING RAIN EVENTS.

THE DRY DETENTION BASIN SEED MIX WILL BE BROADCAST AT AN APPLICATION RATE OF NO LESS THAN 30 POUNDS PER ACRE. THE APPLICATION OF THE NATIVE WETLAND SEED MIX WILL BE NOVEMBER THROUGH MARCH.

PROPOSED DRY DETENTION BASIN SEED MIX:

<b>COMMON NAME:</b>	<b>BOTANICAL NAME:</b>
LITTLE BLUE STEM	Schizachyrium scoparium
FOX SEDGE	Carex vulpinoidea
PRAIRIE CORD GRASS	Spartina pectinata
DARK GREEN BULRUSH	Scirpus atrovirens
DUDLEY'S RUSH	Juncus dudleyi
SWITCH GRASS	Panicum virgatum
INDIAN GRASS	Sorghastrum nutans
WESTERN WHEAT GRASS	Agropyron smithii
SIDEOSTS GRAMA	Bouteloua curtipendula



Saved: 04-04-2011 9:35:43 AM by: TDS  
 Plot Scale: 1/4" = 1'-0"  
 C:\2004\0427\005\Plan\STATION AND POND EROSION PLAN\0427-005-C-2-West-Site Grading Plan

	Revision		By	Date
	<b>SITE GRADING AND EROSION CONTROL PLAN FOR WEST PUMP STATION</b> JAMES L. ARMOUR, P.E. - CITY ENGINEER CITY OF WICHITA PROJECT NO. 468-84741			
		PROFESSIONAL ENGINEERING CONSULTANTS, P.A. 303 SOUTH TOPEKA WICHITA, KS 67202 316-262-2691 www.pec1.com		
Designed by	MEB	Job No.	35-04274-5-042	Sht. 2 of 13
Drawn by	CAE, TDS	Date	APRIL 2011	