

- LEGEND**
- ⊕ PP UTILITY POLE
 - ⊕ LP LIGHT POLE
 - ↓ DM DEAD MAN
 - ⊕ WM WATER METER
 - ⊕ WV WATER VALVE
 - ⊕ GV GAS VALVE
 - ⊕ SS MH SANITARY SEWER MANHOLE
 - ⊕ SWS MH STORM SEWER MANHOLE

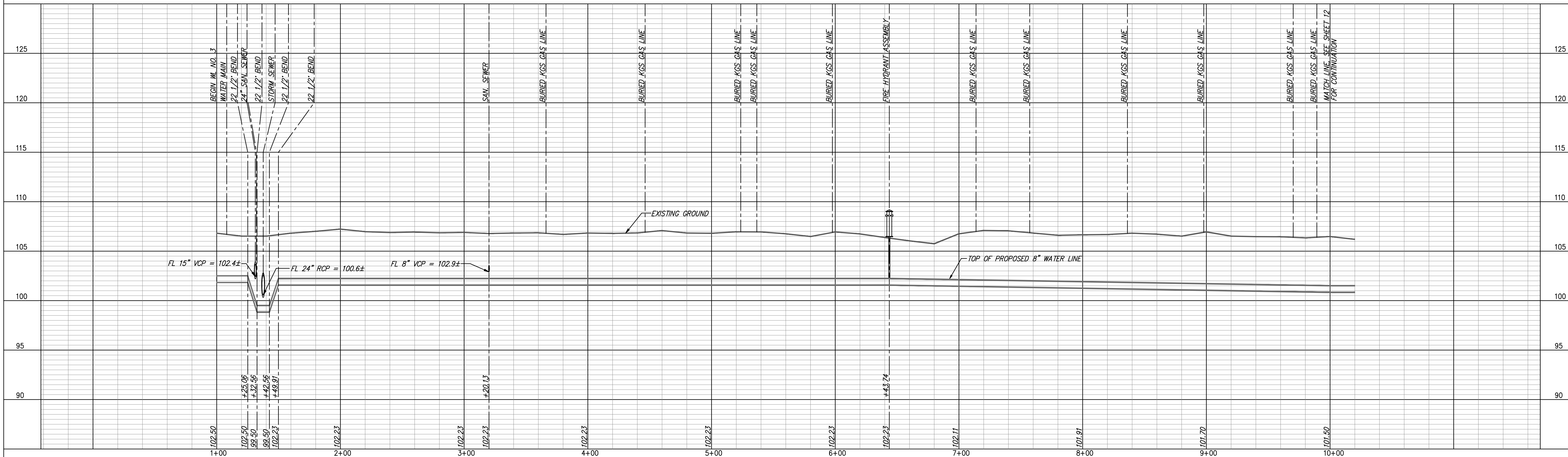
FIRE HYDRANTS REQUIRED

STATION	BURY LINE ELEVATION	TOP OF PIPE ELEVATION	FIRE HYDRANT BURY REQUIRED*
WL NO. 3, STA. 6+43.74	106.61	102.23	5.0'

(FOR FIRE HYDRANT ASSEMBLY, SEE DETAIL, SHEET 27)

- NOTES:**
- UNLESS OTHERWISE INDICATED, DIMENSIONS ARE MEASURED TO CENTERLINE OF FITTINGS IN PLAN VIEW AND TOP OF PIPE IN PROFILE VIEW.
 - WL NO. 3 BASELINE = CENTERLINE OF MILLWOOD AVENUE RIGHT OF WAY.
 - REFER TO SHEET 2, NOTE NO. 8, FOR DIRECTIONAL DRILLING REQUIREMENTS.

REMOVE & REPLACE CONCRETE SIDEWALK IN KIND, THIS SHEET = 13 LF
 REMOVE & REPLACE CONCRETE DRIVEWAY IN KIND, THIS SHEET = 34 LF
 REMOVE & REPLACE CONCRETE PAVEMENT IN KIND, THIS SHEET = 87 LF



**WATER LINE NO. 3
PLAN AND PROFILE**

McCormicks Water Main Replacement

City of Wichita, Sedgwick County, Kansas

PROJECT NO: 06-228
 DATE: 2-15-07
 DRAWN: DMS
 DESIGNED: DAS
 CHECKED: GRY
 APPROVED:

REVISIONS	DATE	COMMENTS	BY	APP.

SHEET
11
of 37

YOUNG & ASSOCIATES, P.A.
Civil and Environmental Engineers
100 S. Georgia, Derby, KS 67037
Tel: (316) 788-2555 | Fax: (316) 788-4408 | Email: young@emaia.com

Copyright 2006, by Young & Associates, P.A., all rights reserved. Prepared in the United States of America. This drawing is the property of Young & Associates, P.A. and may not be reproduced in any form without the specific written permission of Young & Associates, P.A. This plan and design is the exclusive property of Young & Associates, P.A. The accuracy of the original or copied material does not constitute a warranty.