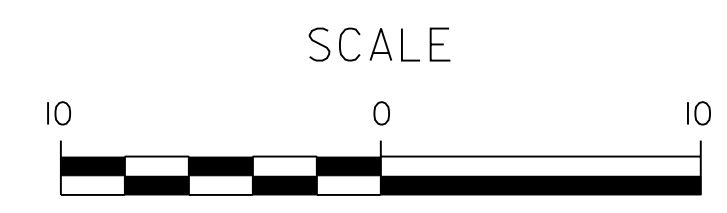
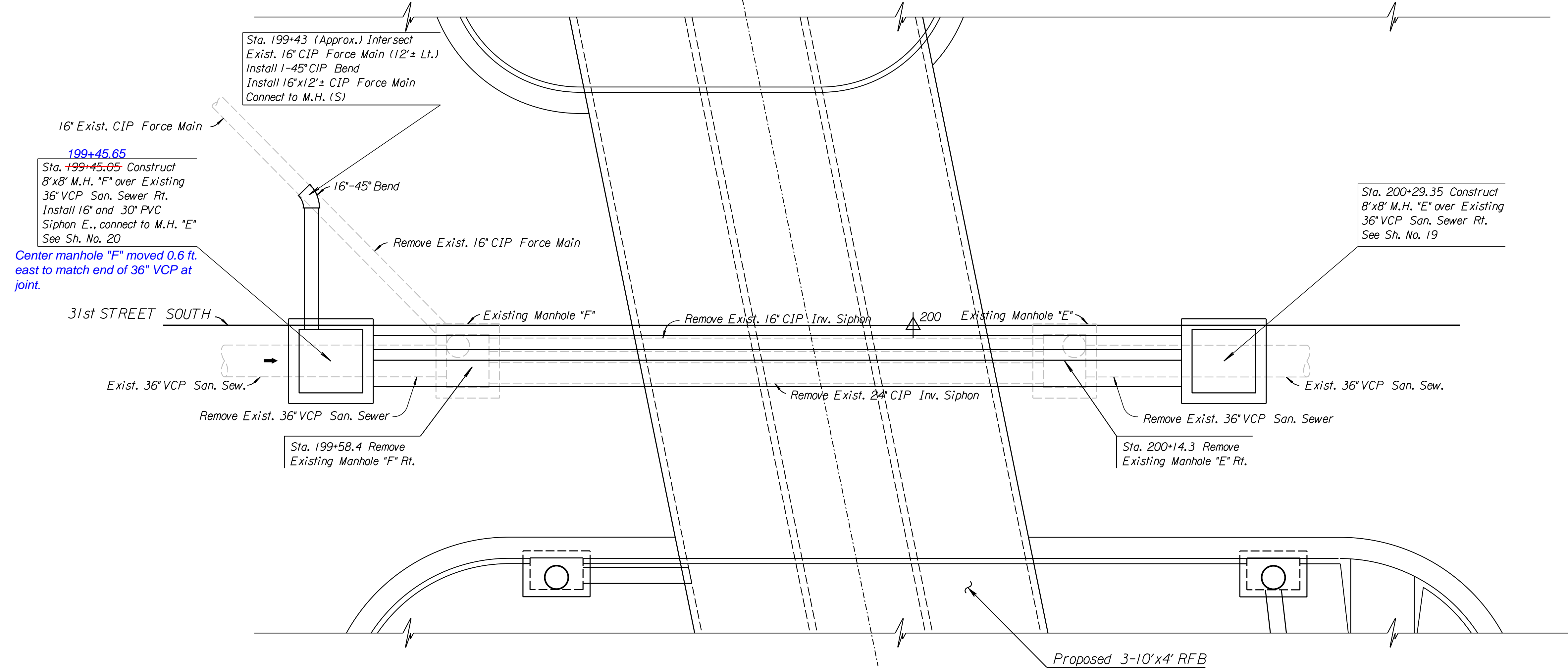


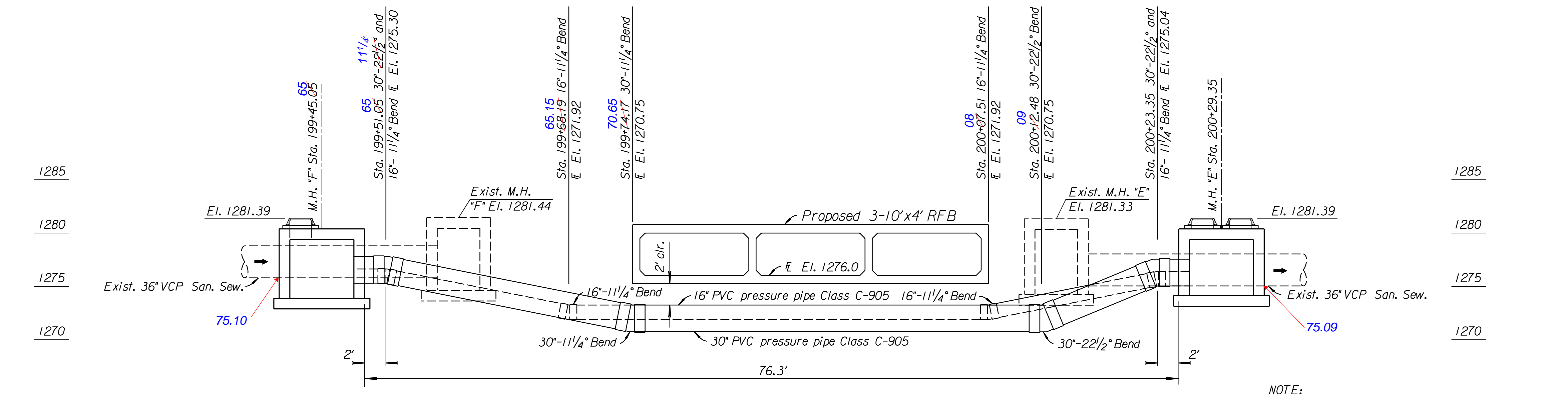
COUNTY	STATE	PROJECT NO.	YEAR	SHEET NO.	TOTAL SHEETS
SEDGWICK	KANSAS	472-84702	2010	18	36



199+45.65
 Sta. 199+45.05 Construct
 8'x8' M.H. "F" over Existing
 36" VCP San. Sewer Rt.
 Install 16" and 30" PVC
 Siphon E., connect to M.H. "E"
 See Sh. No. 20
 Center manhole "F" moved 0.6 ft.
 east to match end of 36" VCP at
 joint.

Sta. 200+29.35 Construct
 8'x8' M.H. "E" over Existing
 36" VCP San. Sewer Rt.
 See Sh. No. 19

PART PLAN



PROFILE

NOTE:
 The location and depth of the existing siphon and force main are approximate.
 It is the Contractor's responsibility to contact each of the utility companies involved, prior to beginning any excavation or construction work on this project, for accurate field location of their utility and to coordinate the work with any necessary utility adjustment or relocation.
 Prior to start of Sanitary Sewer Siphon replacement work, Contractor shall submit plans that detail the methods and installation to be used for bypassing of sanitary flow at this location.
 Cost of fittings shall be subsidiary to the pipe installation and not bid or paid for separately.
 See Specification Section 01562 for details.

NOTE:
 The 30" Bend Fittings to be epoxy coated DIMJ.

CITY OF WICHITA
 JAMES ARMOUR, P.E., CITY ENGINEER
 31ST STREET BRIDGE AT GLENN
PIPE SIPHON LAYOUT

PB PARSONS BRINCKERHOFF
 122. Wichita, Kansas

SCALE: DATE: 4/28/2010 DWG. NO.: 35768A

T:\35768A\CADD\SHEETS\ROADWAY\DETAILS\31STSPHNLAYOUT.dgn
 SURV. PLOT CADD DES. DR. TR. APP. CKD.