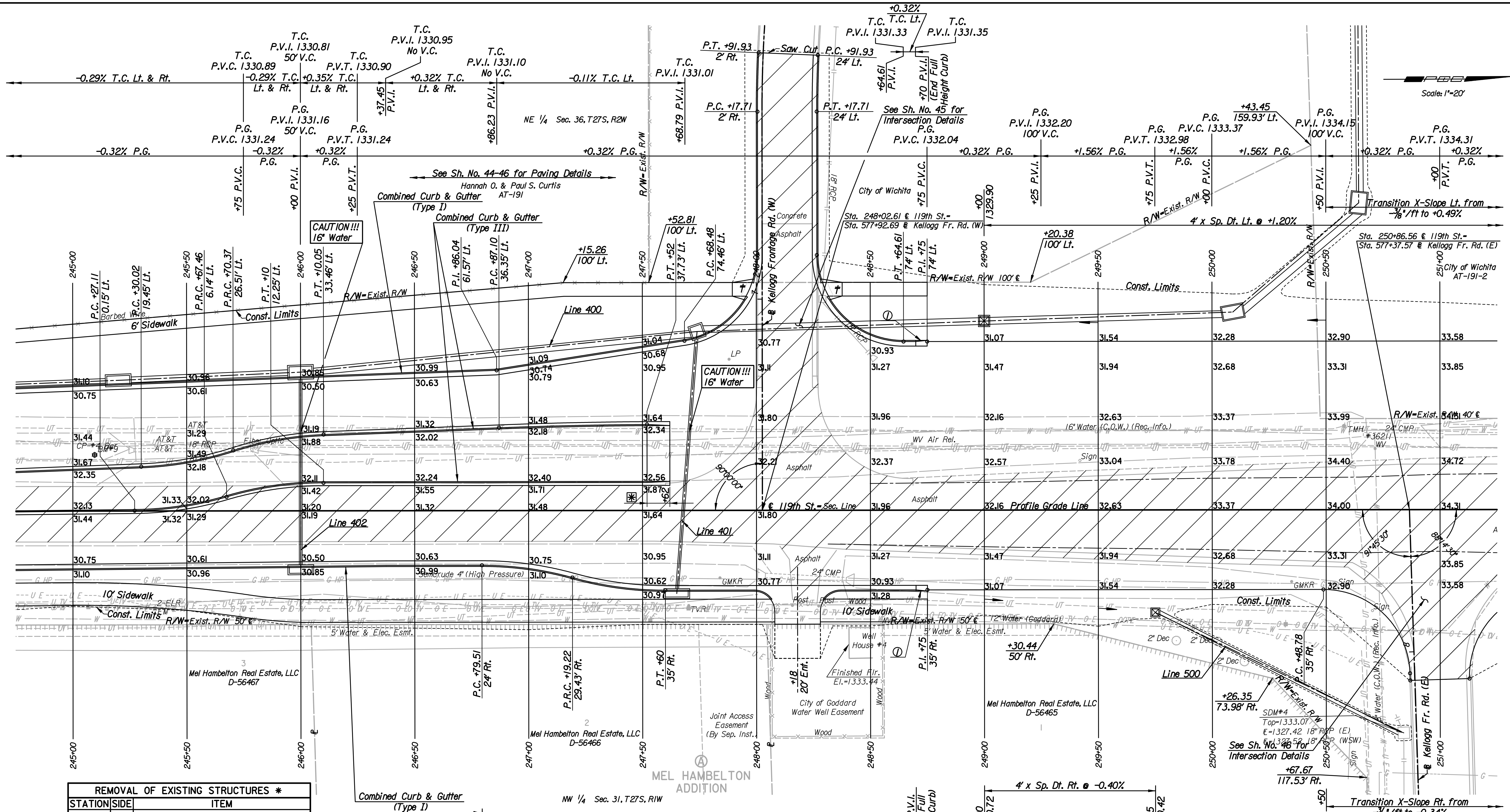


10:02:32 AM
 Date: 1/21/2011
 Plotted By: svb
 FILE: I:\2008\08208\Plan\08208-PL245.dgn



Scale: 1"=20'

REMOVAL OF EXISTING STRUCTURES *		
STATION	SIDE	ITEM
245+53	Lt.	18" RCP with End Sections
247+88	Lt.	Light Pole
248+07	Rt.	65 LF Wood Fence (N & E)
248+22	Rt.	24" CMP with End Sections
248+30	Lt.	MH, 109 LF 18" RCP (W), 31 LF 18" RCP (NE)
249+42	Lt.	Sign
250+55	Rt.	Sign
250+70	Rt.	Sign
250+84	Lt.	24" CMP

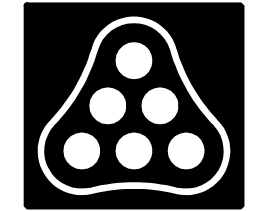
* For Information Only

BM#9 Set 3" x 3" Post 0.3'± below surface in W ditch 119th, 775'± S of center Kellogg, 26' E to center Traveled Way 119th, 135' S to center Mel Hamblton Ford Dealer S Entrance 24.62' Lt. & Sta. 245+09.59 Elev. = 1330.70

- ① 5' transition from Combined Curb & Gutter (Type I) to no curb.
- ⊠ 10' transition from Combined Curb & Gutter (Type III) to no curb.
- † Wheelchair Ramp w/ Detectable Warning

Utilities
 Gas
 Power
 Telephone
 Television
 Water
 Water

SemCrude, LP
 Westar Energy
 AT&T
 Cox Communications
 City of Goddard
 Wichita Water & Sanitary Sewer Dept.



No.	Revision	By	Date
	119TH ST.		
PLAN			
STA. 245+00 TO STA. 251+00			
JAMES L. ARMOUR, P.E.—CITY ENGINEER CITY OF WICHITA PROJECT NO. 472-84894			
Professional Engineering Consultants, P.A. 303 S. TOPEKA • WICHITA, KANSAS 67202 316-262-2691 • FAX 316-262-3003			
Designed by	JPS	Job No.	08208
Drawn by	SVB	Date	Sept., 2010
			Sheet 14 of 149