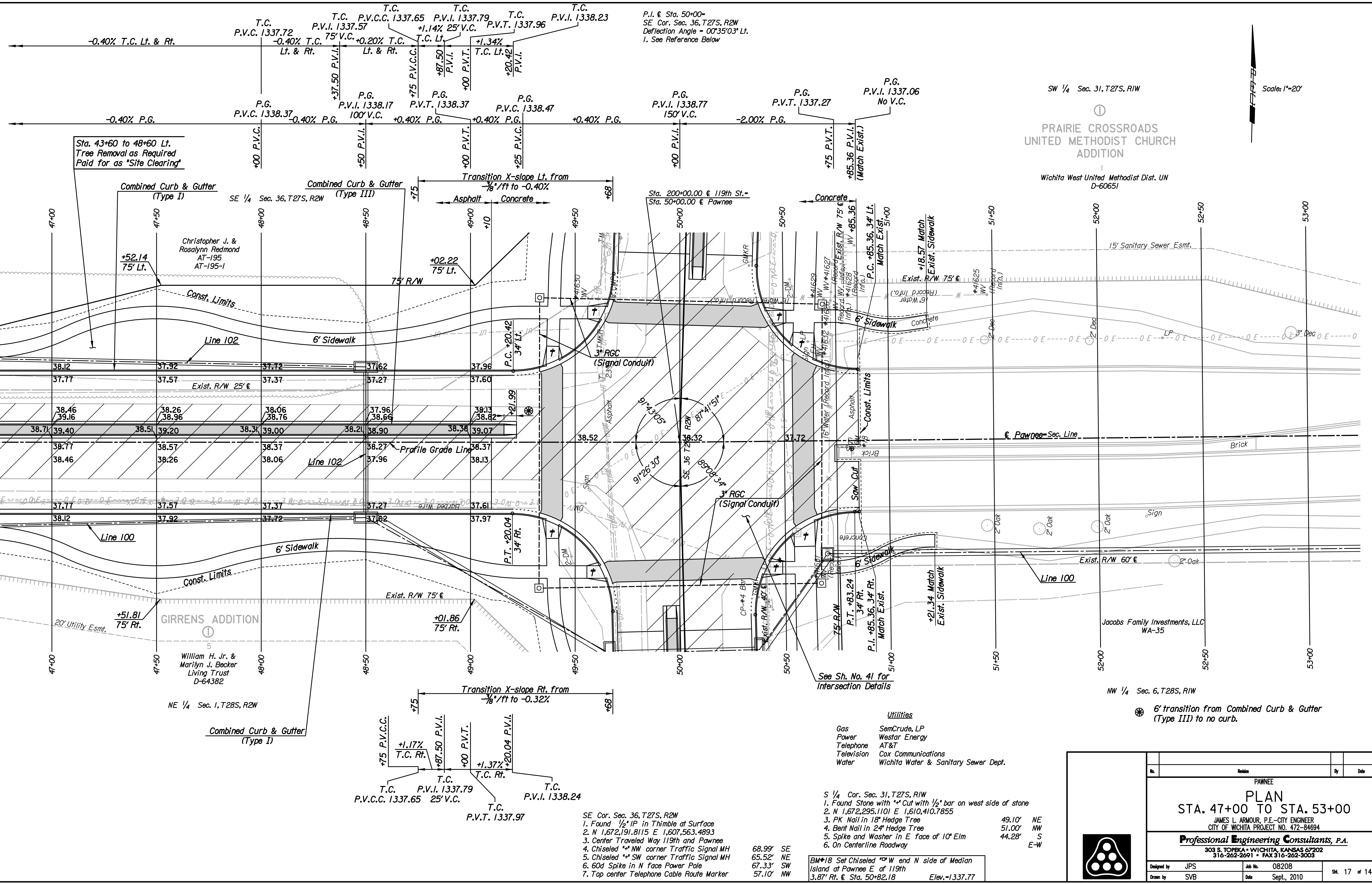


10:31:25 AM  
 Date: 1/21/2011  
 Plotted By: svb  
 FILE: I:\2008\08208\Plan\08208-PL47.dgn



SW 1/4 Sec. 31, T27S, R1W  
 PRAIRIE CROSSROADS  
 UNITED METHODIST CHURCH  
 ADDITION  
 Wichita West United Methodist Dist. UN  
 D-60651

NW 1/4 Sec. 6, T28S, R1W  
 6' transition from Combined Curb & Gutter  
 (Type III) to no curb.

- Utilities**
- Gas: SemCrude, LP
  - Power: Westar Energy
  - Telephone: AT&T
  - Television: Cox Communications
  - Water: Wichita Water & Sanitary Sewer Dept.
- S 1/4 Cor. Sec. 31, T27S, R1W
- Found Stone with \*\* Cut with 1/2" bar on west side of stone 49.10' NE
  - N 1,672,295.1101 E 1,610,410.7855 51.00' NW
  - PK Nail in 18" Hedge Tree 44.28' S
  - Bent Nail in 24" Hedge Tree
  - Spike and Washer in E face of 10" Elm
  - On Centerline Roadway
- BM\*18 Set Chiseled \*\* W end N side of Median  
 Island at Pawnee E of 119th  
 3.87' Rt. @ Sta. 50+82.18 Elev.=1337.77

No.	Revision	By	Date
PAWNEE			
<b>PLAN</b>			
<b>STA. 47+00 TO STA. 53+00</b>			
JAMES L. ARMOUR, P.E.-CITY ENGINEER CITY OF WICHITA PROJECT NO. 472-84694			
<b>Professional Engineering Consultants, P.A.</b>			
303 S. TOPKA - WICHITA, KANSAS 67202 316-262-2691 • FAX 316-262-3003			
Designed by	JPS	Job No.	08208
Drawn by	SVB	Date	Sept., 2010
			Sheet 17 of 149