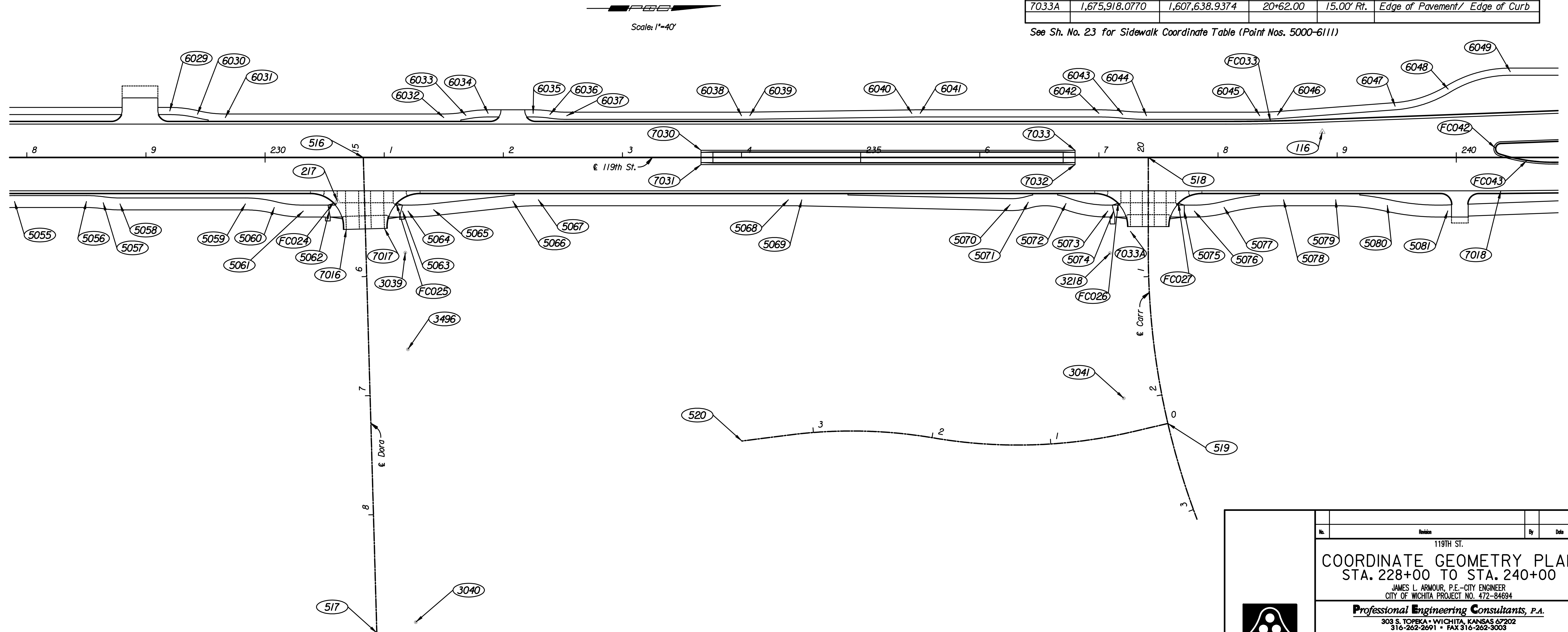


NO.	Δ	R	T	L	E	CURVE DATA							
						P.C. COORDINATES		P.I. COORDINATES		P.T. COORDINATES		C.C. COORDINATES	
						NORTH	EAST	NORTH	EAST	NORTH	EAST	NORTH	EAST
FC024	88°22'21" Rt.	28.00'	27.22'	43.19'	11.05'	1,675,229.8075	1,607,604.9730	1,675,257.0231	1,607,605.0507	1,675,257.7184	1,607,632.2575	1,675,229.7276	1,607,632.9729
FC025	91°37'39" Rt.	28.00'	28.81'	44.78'	12.17'	1,675,293.7734	1,607,633.9509	1,675,293.0375	1,607,605.1535	1,675,321.8442	1,607,605.2357	1,675,321.7643	1,607,633.2356
FC026	90°00'00" Rt.	28.00'	28.00'	43.98'	11.60'	1,675,888.1685	1,607,606.8519	1,675,916.1684	1,607,606.9318	1,675,916.0885	1,607,634.9317	1,675,888.0886	1,607,634.8518
FC027	90°00'00" Rt.	28.00'	28.00'	43.98'	11.60'	1,675,950.0883	1,607,635.0287	1,675,950.1682	1,607,607.0288	1,675,978.1681	1,607,607.1087	1,675,978.0882	1,607,635.1086
FC033	02°08'51" Lt.	1,998.00'	37.45'	74.89'	0.35'	1,675,998.4861	1,607,547.1665	1,676,035.9353	1,607,547.2733	1,676,073.3622	1,607,545.9768	1,676,004.1880	1,605,549.1746
FC042	160°11'22" Lt.	4.75'	27.20'	13.28'	22.86'	1,676,229.2075	1,607,565.8431	1,676,202.0225	1,607,566.7848	1,676,227.9178	1,607,575.1122	1,676,229.3720	1,607,570.5902
FC043	18°14'10" Lt.	148.75'	23.87'	47.34'	1.90'	1,676,227.9178	1,607,575.1122	1,676,250.6454	1,607,582.4208	1,676,274.5187	1,607,582.2503	1,676,273.4558	1,607,433.5040

CONTROL POINTS					
POINT NO.	NORTH COORDINATE	EAST COORDINATE	STATION	OFFSET	DESCRIPTION
116	1,676,079.3888	1,607,555.9193	238+87.54	21.48' Lt.	*4 Bar
217	1,675,252.3358	1,607,611.6760	230+60.65	36.64' Rt.	*4 Bar
516	1,675,274.2635	1,607,575.0998	15+00.00	0.00' Rt.	Dora & Point
517	1,675,284.4631	1,607,974.1918	18+99.22	0.00' Rt.	Dora & Point
518	1,675,933.2539	1,607,576.9804	20+00.00	0.00' Rt.	Carr & Point
519	1,675,949.0797	1,607,800.3388	22+24.57	0.00' Rt.	Carr & Point
3039	1,675,309.2869	1,607,655.1014	231+17.73	79.90' Rt.	Chiseled **
3040	1,675,317.1777	1,607,965.2876	231+26.50	390.06' Rt.	Chiseled **
3041	1,675,912.0662	1,607,779.0103	237+20.86	202.09' Rt.	Chiseled **
3218	1,675,900.9385	1,607,657.1616	237+09.38	80.27' Rt.	Chiseled **
3496	1,675,311.2364	1,607,736.2318	231+19.91	161.03' Rt.	Chiseled **

COORDINATE TABLE					
POINT NO.	NORTH COORDINATE	EAST COORDINATE	STATION	OFFSET	DESCRIPTION
7016	1,675,259.8017	1,607,635.4890	230+68.18	60.43' Rt.	Edge of Pavement/ Edge of Curb
7017	1,675,291.7912	1,607,634.6714	231+00.17	59.52' Rt.	Edge of Pavement/ Edge of Curb
7018	1,676,229.1566	1,607,605.8250	240+37.45	28.00' Rt.	Edge of Pavement P.I.
7030	1,675,557.8054	1,607,569.9089	233+66.00	6.00' Lt.	Edge of Pavement/ Edge of Curb
7031	1,675,557.7711	1,607,581.9089	233+66.00	6.00' Rt.	Edge of Pavement/ Edge of Curb
7032	1,675,871.7699	1,607,582.8050	236+80.00	6.00' Rt.	Edge of Pavement/ Edge of Curb
7033	1,675,871.8041	1,607,570.8050	236+80.00	6.00' Lt.	Edge of Pavement/ Edge of Curb
7033A	1,675,918.0770	1,607,638.9374	20+62.00	15.00' Rt.	Edge of Pavement/ Edge of Curb

See Sh. No. 23 for Sidewalk Coordinate Table (Point Nos. 5000-6111)



Plotted By: svb Date: 1/21/2011 11:24:49 AM
 FILE: I:\2008\08208\Geometry\08208-cogo228.dgn

No.		Revision		By		Date	
119TH ST.							
COORDINATE GEOMETRY PLAN							
STA. 228+00 TO STA. 240+00							
JAMES L. ARMOUR, P.E. - CITY ENGINEER CITY OF WICHITA PROJECT NO. 472-84694							
Professional Engineering Consultants, P.A.							
303 S. TOPEKA - WICHITA, KANSAS 67202 316-262-2691 • FAX 316-262-3003							
Designed by	JPS	Job No.	08208	Sht.		21 of 149	
Drawn by	AKL	Date	Sept., 2010				