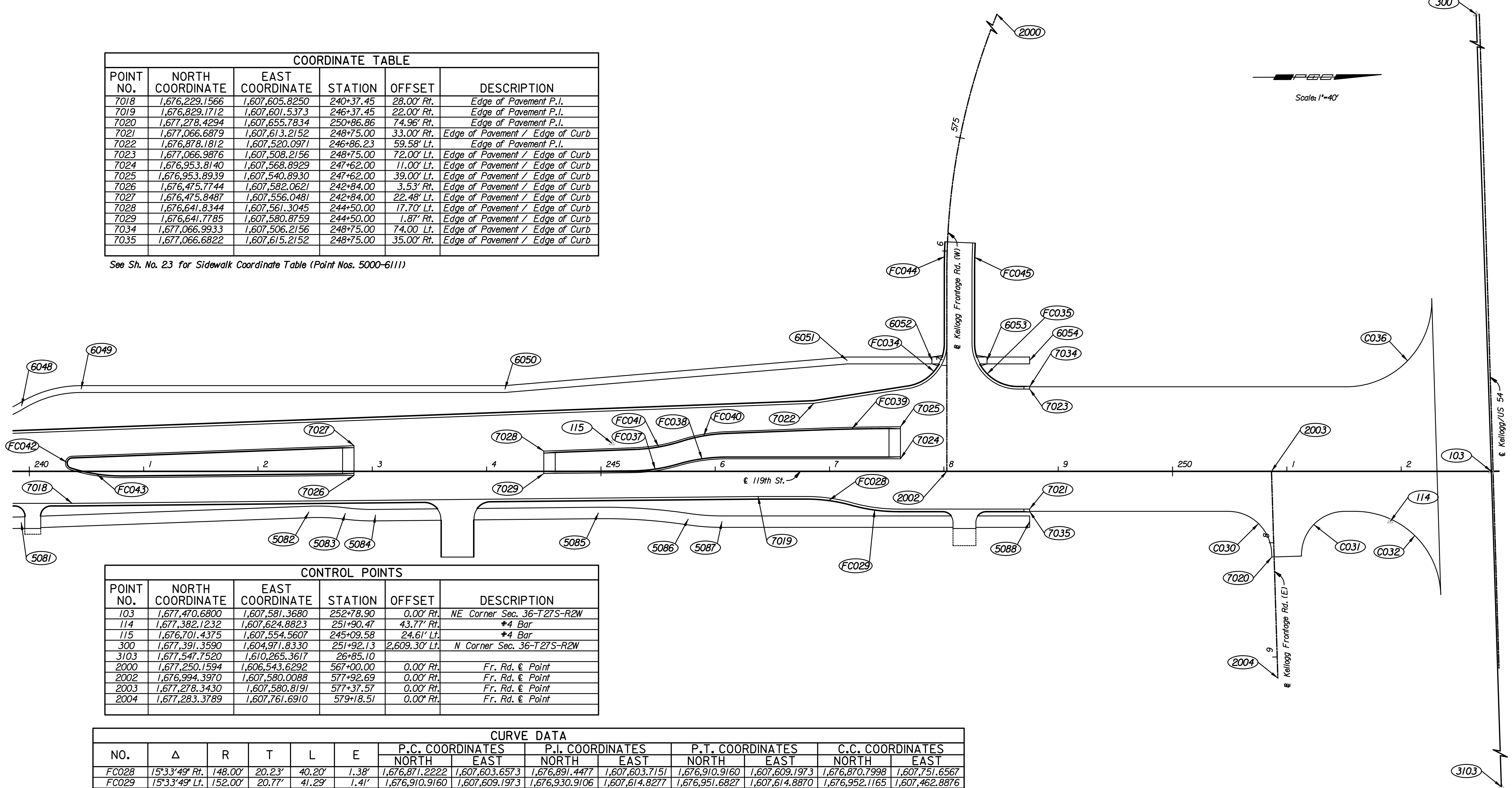


COORDINATE TABLE					
POINT NO.	NORTH COORDINATE	EAST COORDINATE	STATION	OFFSET	DESCRIPTION
7018	1,676,229.1566	1,607,605.8250	240+37.45	28.00' Rt.	Edge of Pavement P.I.
7019	1,676,829.1712	1,607,601.5373	246+37.45	22.00' Rt.	Edge of Pavement P.I.
7020	1,677,278.4294	1,607,655.7834	250+86.86	74.96' Rt.	Edge of Pavement P.I.
7021	1,677,066.6879	1,607,613.2152	248+75.00	33.00' Rt.	Edge of Pavement / Edge of Curb
7022	1,676,878.1812	1,607,520.0971	246+86.23	59.58' Lt.	Edge of Pavement P.I.
7023	1,677,066.9876	1,607,508.2156	248+75.00	72.00' Lt.	Edge of Pavement / Edge of Curb
7024	1,676,953.8140	1,607,568.8929	247+62.00	11.00' Lt.	Edge of Pavement / Edge of Curb
7025	1,676,953.8939	1,607,540.8930	247+62.00	39.00' Lt.	Edge of Pavement / Edge of Curb
7026	1,676,475.7744	1,607,582.0621	242+84.00	3.53' Rt.	Edge of Pavement / Edge of Curb
7027	1,676,475.8487	1,607,556.0481	242+84.00	22.48' Lt.	Edge of Pavement / Edge of Curb
7028	1,676,641.8344	1,607,561.3045	244+50.00	17.70' Lt.	Edge of Pavement / Edge of Curb
7029	1,676,641.7785	1,607,580.8759	244+50.00	1.87' Rt.	Edge of Pavement / Edge of Curb
7034	1,677,066.9933	1,607,506.2156	248+75.00	74.00' Lt.	Edge of Pavement / Edge of Curb
7035	1,677,066.6822	1,607,615.2152	248+75.00	35.00' Rt.	Edge of Pavement / Edge of Curb

See Sh. No. 23 for Sidewalk Coordinate Table (Point Nos. 5000-6111)



CONTROL POINTS					
POINT NO.	NORTH COORDINATE	EAST COORDINATE	STATION	OFFSET	DESCRIPTION
103	1,677,470.6800	1,607,581.3680	252+78.90	0.00' Rt.	NE Corner Sec. 36-T27S-R2W
114	1,677,382.1232	1,607,624.8823	251+90.47	43.77' Rt.	#4 Bar
115	1,676,701.4375	1,607,554.5607	245+09.58	24.61' Lt.	#4 Bar
300	1,677,391.3590	1,604,971.8330	251+92.13	2,609.30' Lt.	N Corner Sec. 36-T27S-R2W
3103	1,677,547.7520	1,610,265.3617		26+85.10	
2000	1,677,250.1594	1,606,543.6292	567+00.00	0.00' Rt.	Fr. Rd. & Point
2002	1,676,994.3970	1,607,580.0088	577+92.69	0.00' Rt.	Fr. Rd. & Point
2003	1,677,278.3430	1,607,580.8191	577+37.57	0.00' Rt.	Fr. Rd. & Point
2004	1,677,283.3789	1,607,761.6910	579+18.51	0.00' Rt.	Fr. Rd. & Point

NO.	Δ	R	T	L	E	P.C. COORDINATES		P.I. COORDINATES		P.T. COORDINATES		C.C. COORDINATES	
						NORTH	EAST	NORTH	EAST	NORTH	EAST	NORTH	EAST
						FC028	15°33'49" Rt.	148.00'	20.23'	40.20'	1.38'	1,676,871.2222	1,607,603.6573
FC029	15°33'49" Lt.	152.00'	20.77'	41.29'	1.41'	1,676,910.9160	1,607,609.1973	1,676,930.9106	1,607,614.8277	1,676,951.6827	1,607,614.8870	1,676,952.1165	1,607,462.8876
C030	88°14'30" Rt.	38.00'	36.85'	58.52'	14.93'	1,677,240.4654	1,607,615.7111	1,677,277.3167	1,607,615.8163	1,677,278.3423	1,607,652.6534	1,677,240.3570	1,607,653.7110
C031	91°45'30" Rt.	38.00'	39.18'	60.86'	16.58'	1,677,304.4194	1,607,655.0598	1,677,303.3288	1,607,615.8905	1,677,342.5131	1,607,616.0024	1,677,342.4046	1,607,654.0022
C032	88°20'59" Rt.	75.00'	72.87'	115.65'	29.57'	1,677,351.3439	1,607,616.0276	1,677,424.2140	1,607,616.2355	1,677,426.1046	1,607,689.0814	1,677,351.1299	1,607,691.0273
FC034	81°07'11" Lt.	38.00'	32.52'	53.80'	12.02'	1,676,960.4757	1,607,505.4561	1,676,992.6238	1,607,500.5271	1,676,992.7166	1,607,468.0035	1,676,954.7168	1,607,467.8951
FC035	90°00'00" Lt.	38.00'	38.00'	59.69'	15.74'	1,677,018.7165	1,607,468.0777	1,677,018.6081	1,607,506.0776	1,677,056.6079	1,607,506.1860	1,677,056.7163	1,607,468.1862
C036	91°40'25" Lt.	75.00'	77.22'	120.00'	32.65'	1,677,343.7744	1,607,507.0055	1,677,420.9974	1,607,507.2259	1,677,418.9623	1,607,430.0294	1,677,343.9884	1,607,432.0058
FC037	15°45'43" Lt.	148.75'	20.59'	40.92'	1.42'	1,676,718.8963	1,607,579.0747	1,676,739.4861	1,607,578.9276	1,676,759.2618	1,607,573.1930	1,676,717.8334	1,607,430.3285
FC038	16°20'05" Rt.	151.25'	21.71'	43.12'	1.55'	1,676,759.2618	1,607,573.1930	1,676,780.1106	1,607,567.1472	1,676,801.8182	1,607,567.2091	1,676,801.3865	1,607,718.4585
FC039	02°08'51" Lt.	1,998.75'	37.46'	74.92'	0.35'	1,676,953.8903	1,607,542.1430	1,676,916.4271	1,607,542.0361	1,676,878.9861	1,607,543.3331	1,676,948.1862	1,609,540.8849
FC040	15°33'49" Lt.	148.75'	20.33'	40.41'	1.38'	1,676,801.9255	1,607,546.0027	1,676,781.6097	1,607,546.7065	1,676,762.2275	1,607,552.8354	1,676,807.0755	1,607,694.6635
FC041	15°33'49" Rt.	151.25'	20.67'	41.08'	1.41'	1,676,762.2275	1,607,552.8354	1,676,742.5197	1,607,559.0673	1,676,721.8624	1,607,559.7829	1,676,716.6258	1,607,408.6236
FC044	02°27'42" Rt.	602.00'	12.93'	25.87'	0.14'	1,676,992.8963	1,607,405.0203	1,676,992.9333	1,607,392.0858	1,676,993.5257	1,607,379.1648	1,677,594.8939	1,607,406.7383
FC045	02°27'42" Lt.	576.00'	12.38'	24.75'	0.13'	1,677,019.4984	1,607,380.3557	1,677,018.9316	1,607,392.7186	1,677,018.8962	1,607,405.0945	1,677,594.8939	1,607,406.7383

Revision		By	Date
119TH ST.			
<b>COORDINATE GEOMETRY PLAN</b>			
<b>STA. 240+00 TO STA. 252+50</b>			
JAMES L. ARMOUR, P.E. - CITY ENGINEER CITY OF WICHITA PROJECT NO. 472-84694			
<b>Professional Engineering Consultants, P.A.</b> 303 S. TOPEKA - WICHITA, KANSAS 67202 316-262-2691 • FAX 316-262-3003			
Designed by	JPS	Job No.	08208
Drawn by	AKL	Date	Sept., 2010
			Sh. 22 of 149

Plotted By: svb Date: 1/21/2011 11:50:05 AM  
 FILE: I:\2008\08208\Geometry\08208-cogo240.dgn