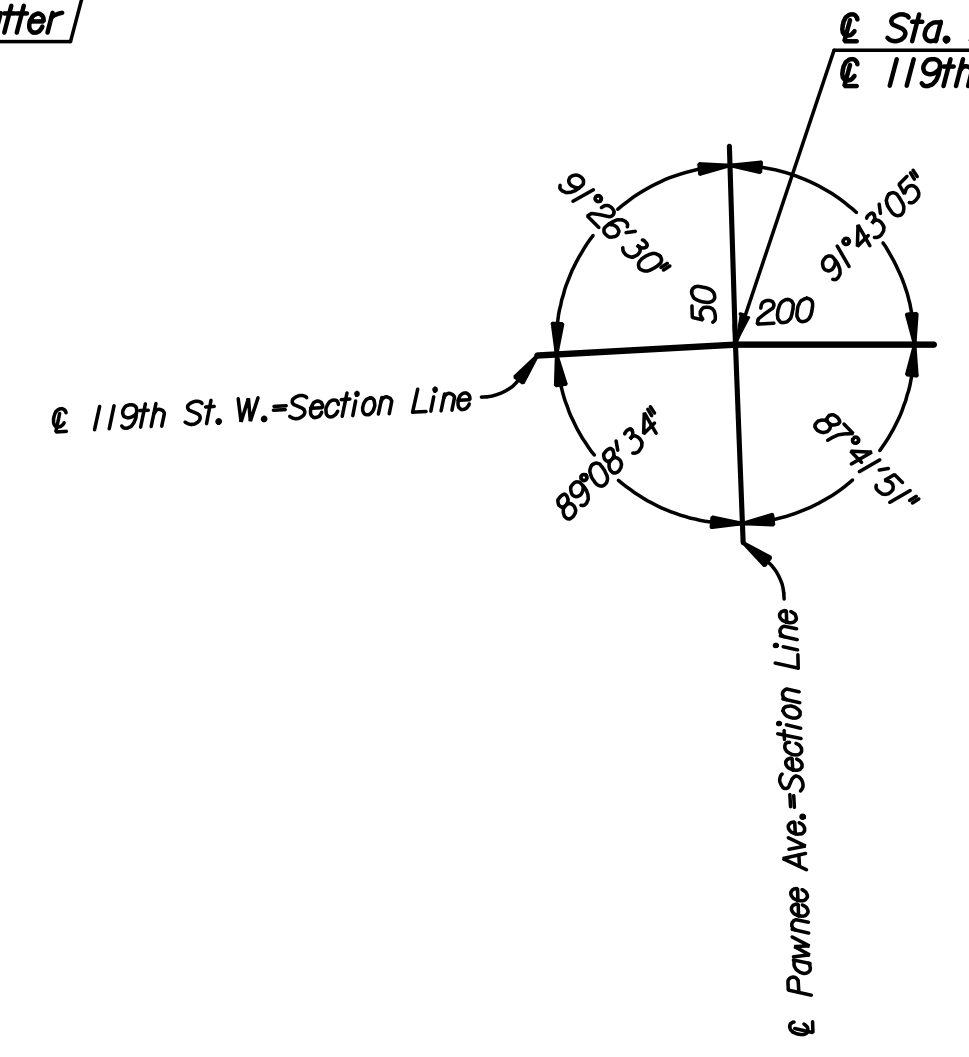
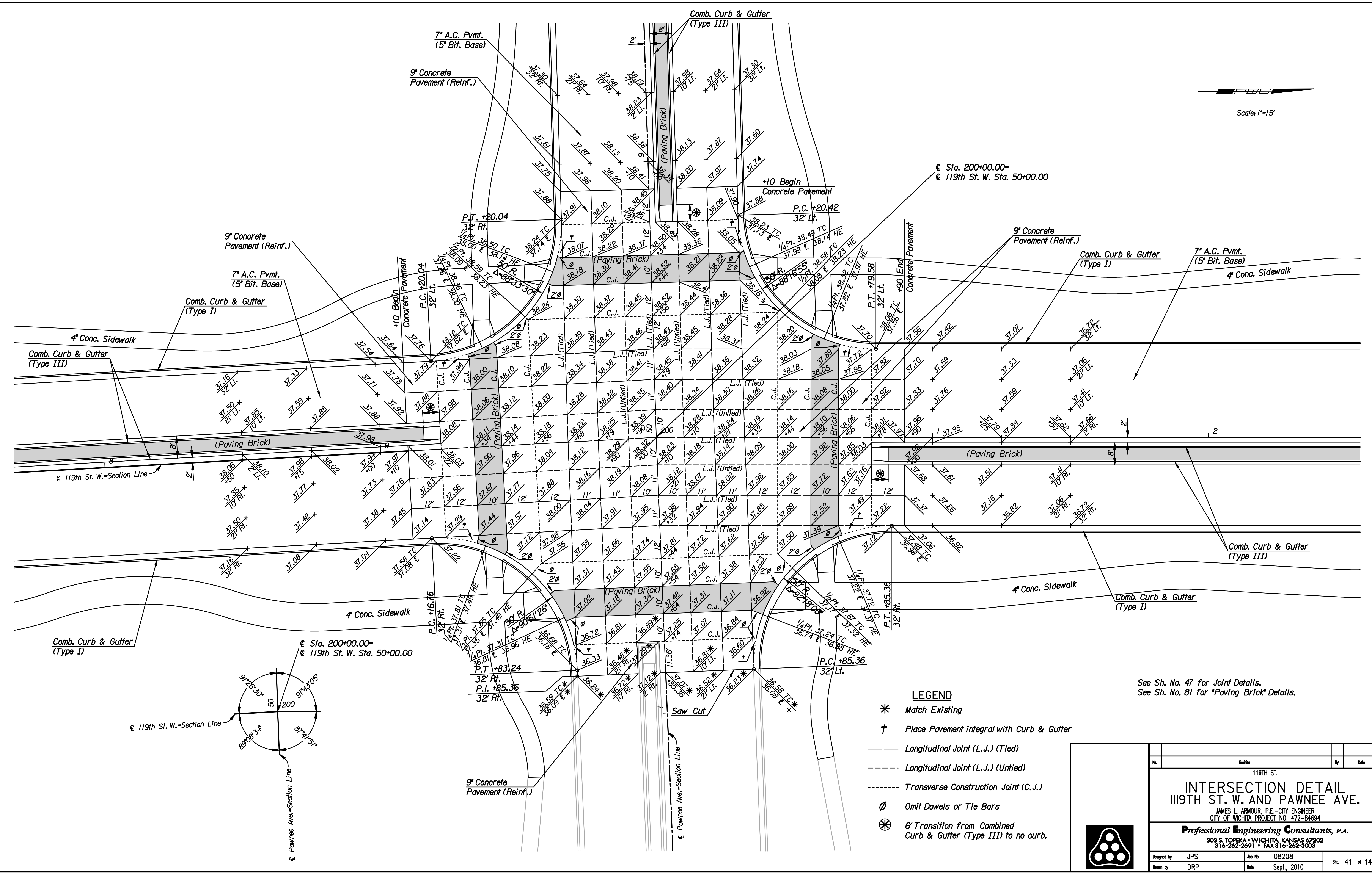


Scale: 1"=15'



- LEGEND**
- \* Match Existing
  - † Place Pavement integral with Curb & Gutter
  - Longitudinal Joint (L.J.) (Tied)
  - - - Longitudinal Joint (L.J.) (Untied)
  - · - · - Transverse Construction Joint (C.J.)
  - ∅ Omit Dowels or Tie Bars
  - ⊗ 6' Transition from Combined Curb & Gutter (Type III) to no curb.

See Sh. No. 47 for Joint Details.  
See Sh. No. 81 for "Paving Brick" Details.

No.	Revision	By	Date
119TH ST.			
<b>INTERSECTION DETAIL</b>			
<b>119TH ST. W. AND PAWNEE AVE.</b>			
JAMES L. ARMOUR, P.E.—CITY ENGINEER CITY OF WICHITA PROJECT NO. 472-84694			
<b>Professional Engineering Consultants, P.A.</b>			
303 S. TOPEKA • WICHITA, KANSAS 67202 316-262-2691 • FAX 316-262-3003			
Designed by	JPS	Job No.	08208
Drawn by	DRP	Date	Sept., 2010
			Sheet 41 of 149

Plotted By: svb Date: 1/21/2011 3:33:53 PM  
 FILE: I:\2008\Intersections\08208-Pawnee.dgn