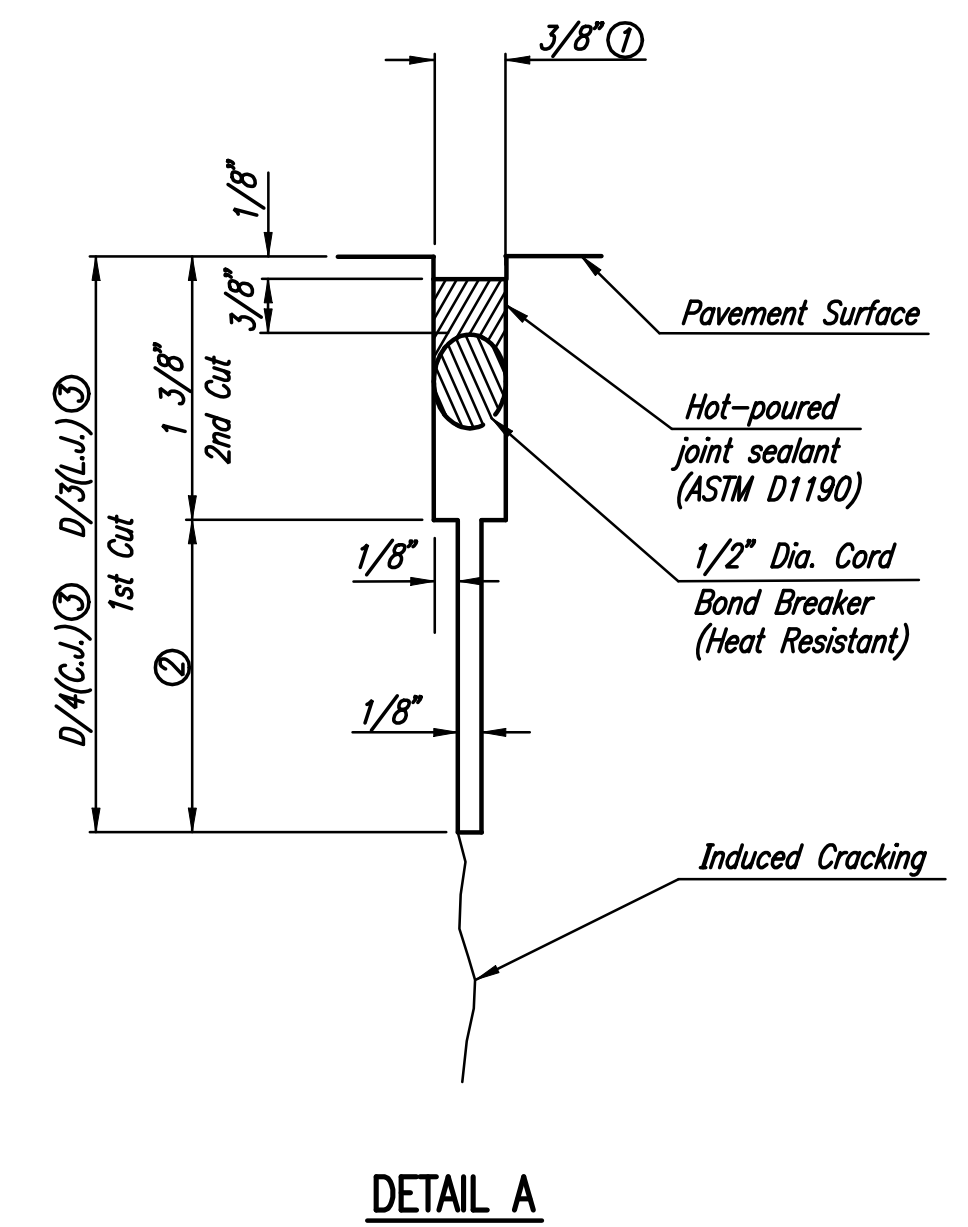
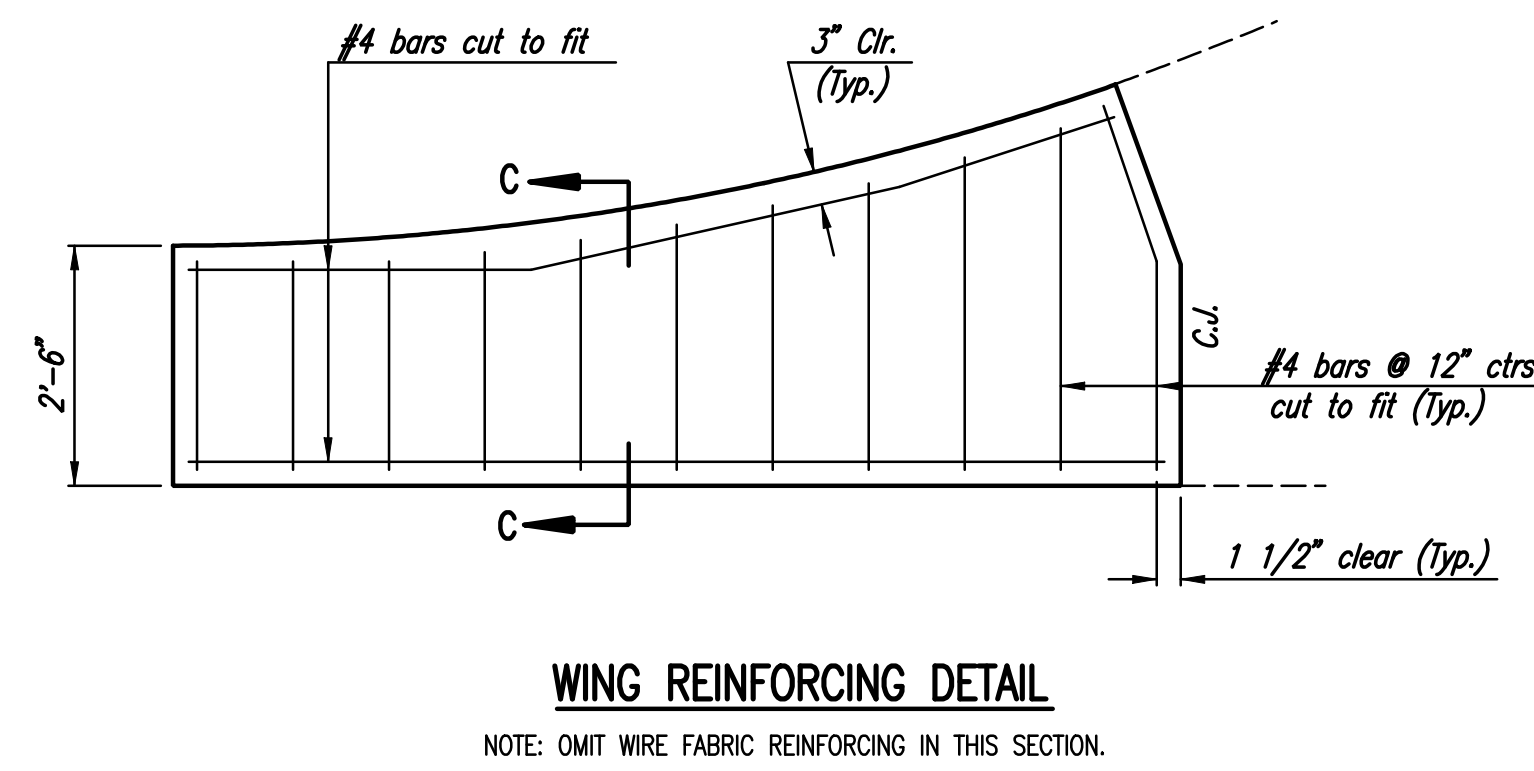
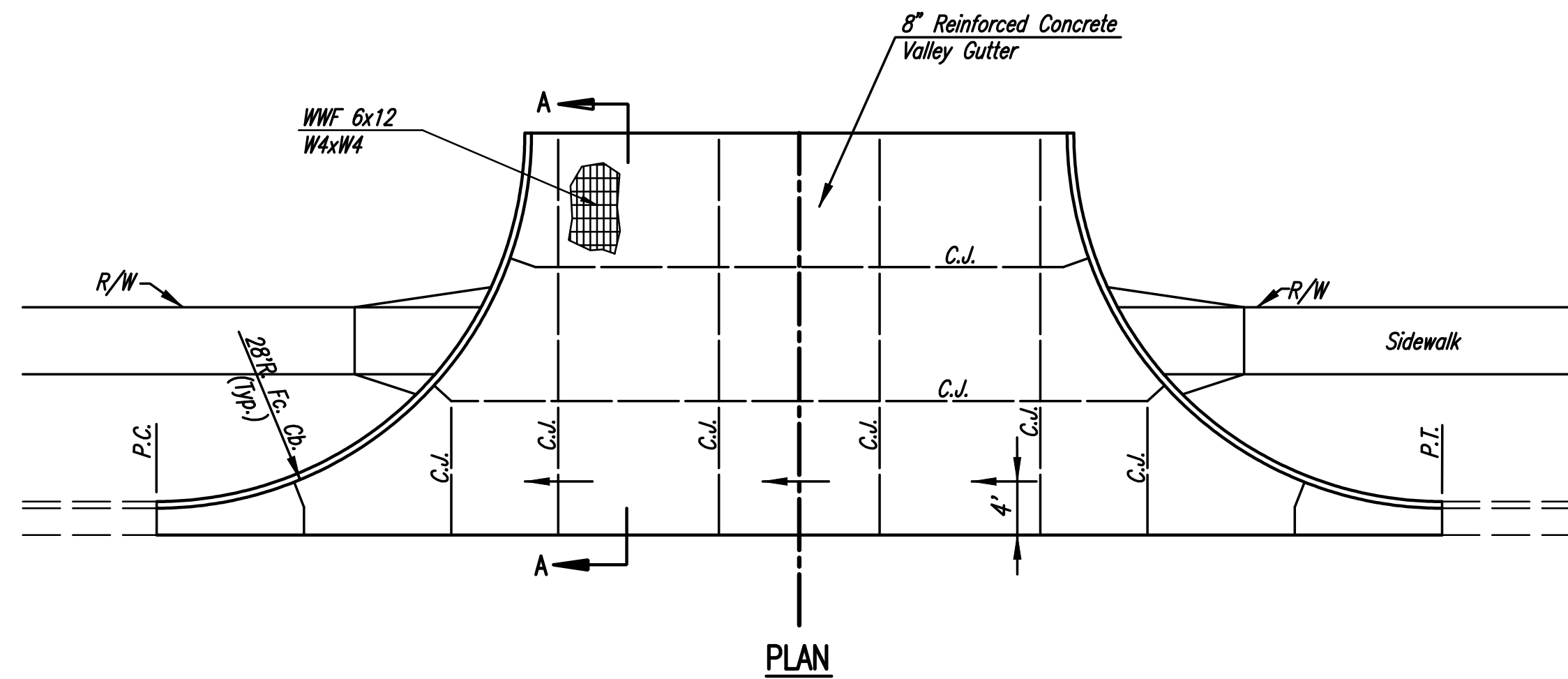
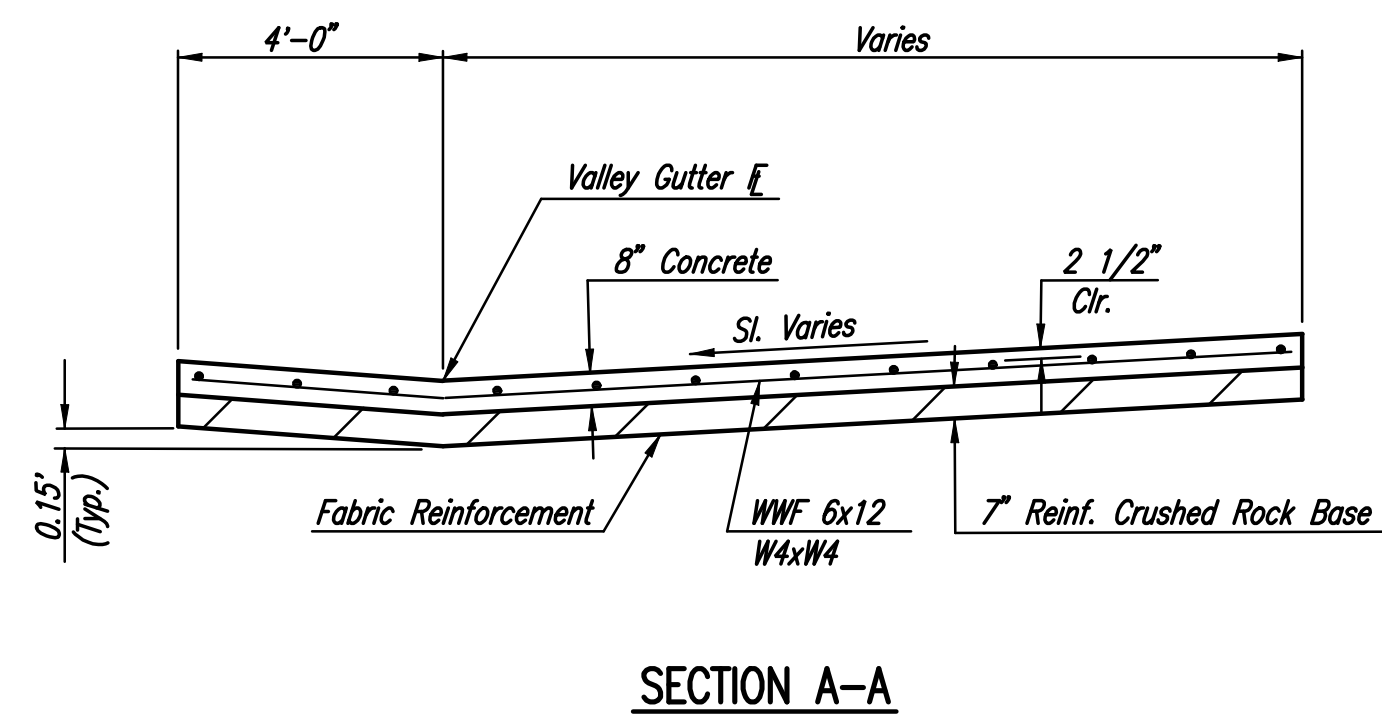


DSNR: OPER: s/vb SCALE: I:/2008/08208/STANDARDS/08208--VALGUTDL v8.DGN 6-11-2010 13:33:14 LAST REV: BY:

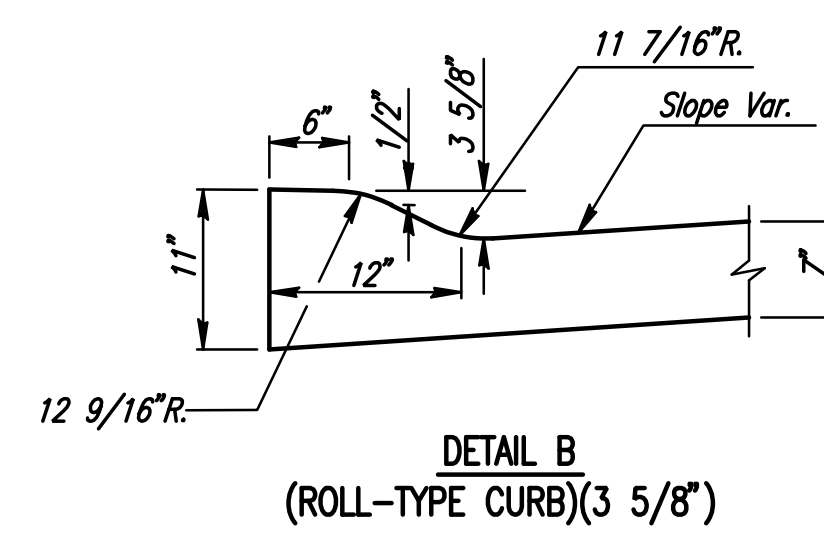
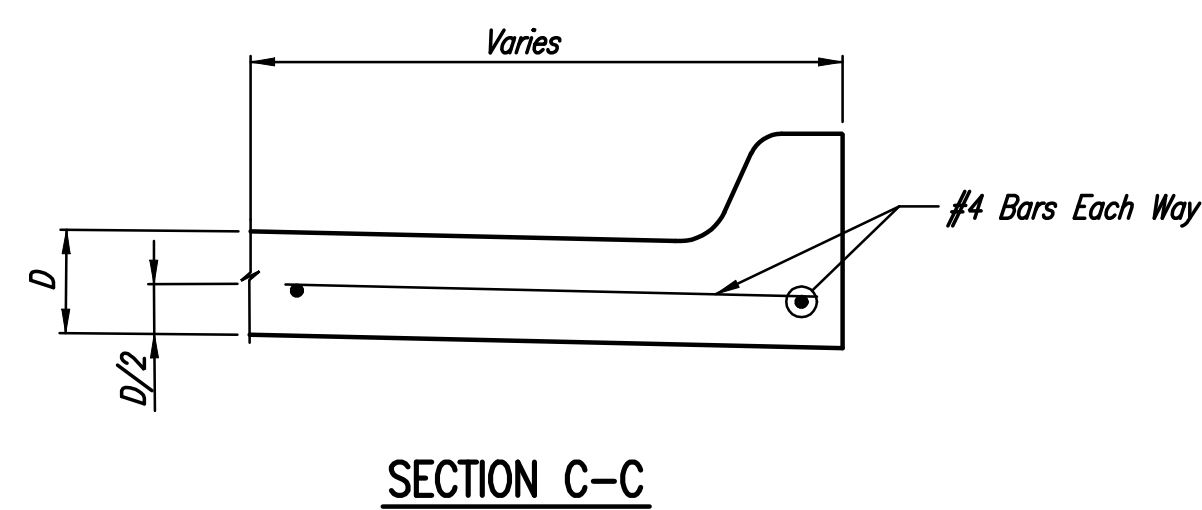
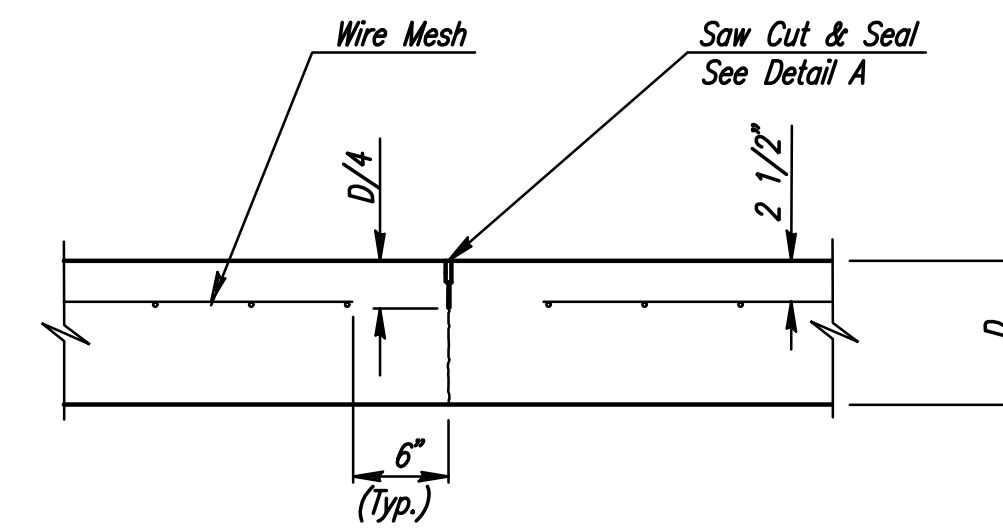


- ⓐ To be accomplished in 2 cuts for Longitudinal Joints and Contraction Joints. Initial cut to be 1/8" wide.
- ⓑ Eliminate bottom of cut when metal keyway is used as part of Longitudinal or Transverse Construction Joint and at Doweled Construction Joint Locations.
- ⓒ 1 1/2" Minimum

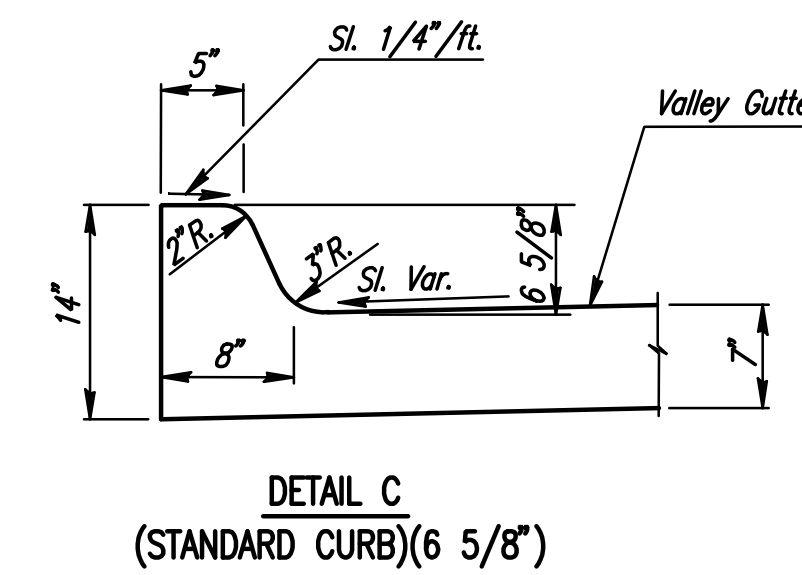


NOTE: OMIT REINFORCING MESH AT ALL JOINTS

NOTE: ALL CONCRETE VALLEY GUTTER REINFORCEMENT SHALL BE ADEQUATELY SUPPORTED BY BAR CHAIRS IN THE REQUIRED POSITION UNLESS APPROVED OTHERWISE BY THE ENGINEER.



MONOLITHIC EDGE CURB



No.	Revision	By	Date
119TH ST. <b>VALLEY GUTTER DETAILS</b>			
JAMES L. ARMOUR, P.E.-CITY ENGINEER CITY OF WICHITA PROJECT NO. 472-84694			
<b>Professional Engineering Consultants, P.A.</b> 303 S. TOPEKA • WICHITA, KANSAS 67202 316-262-2691 • FAX 316-262-3003			
Designed by	Job No.	08208	
Drawn by	Date	Sept., 2010	
			Sht. 49 of 149