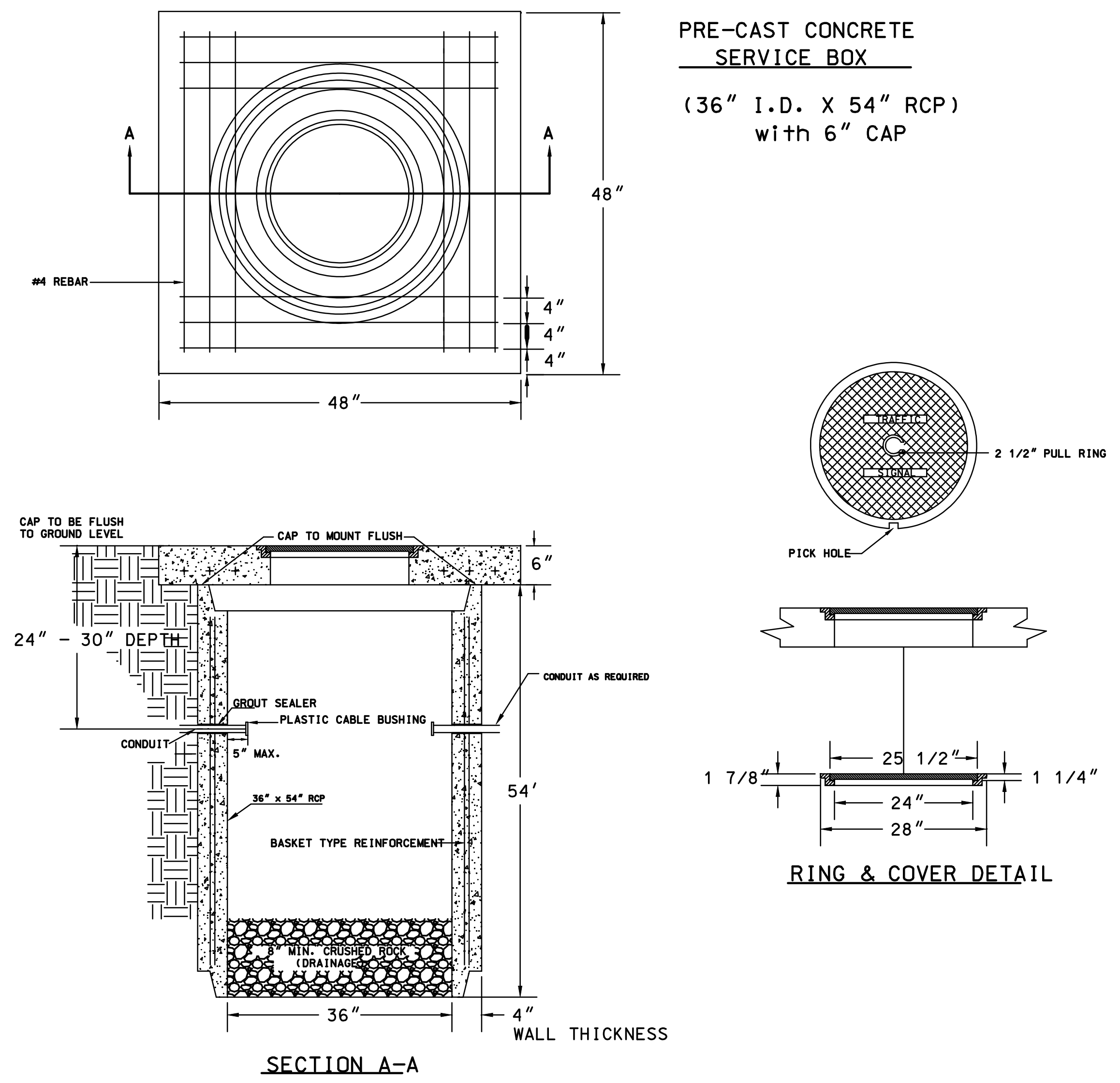
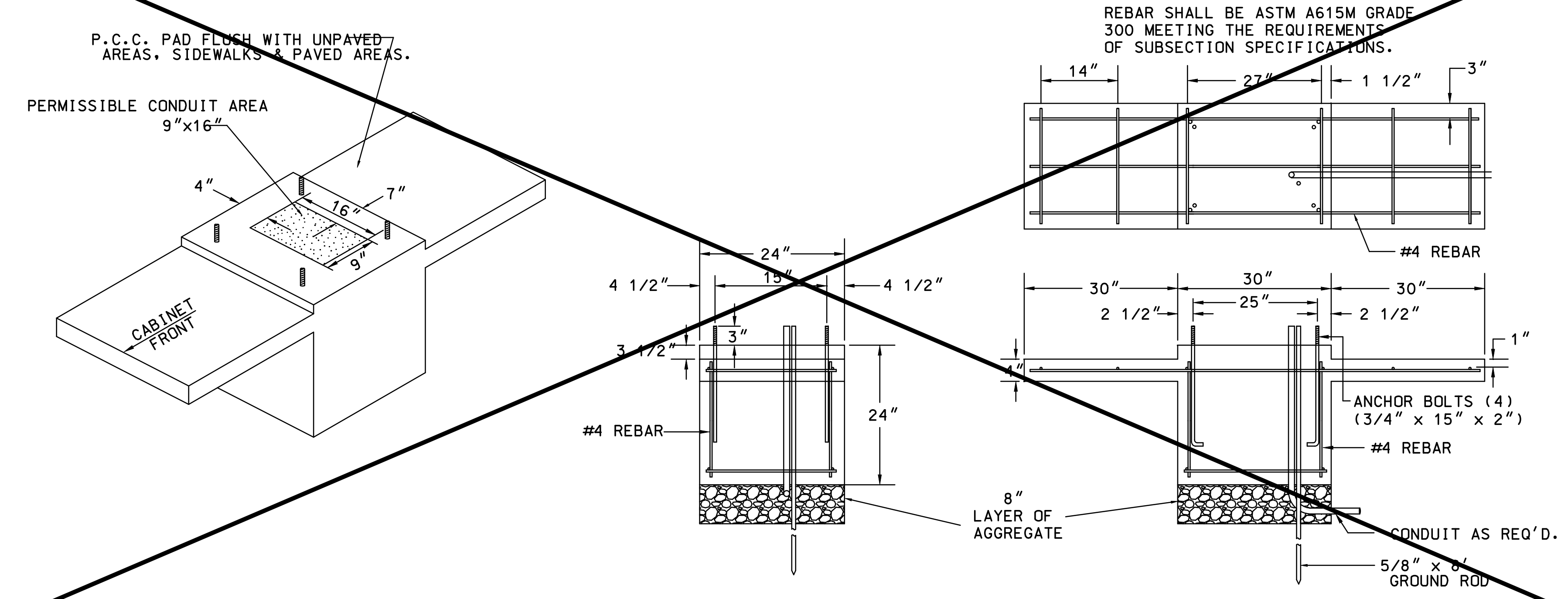


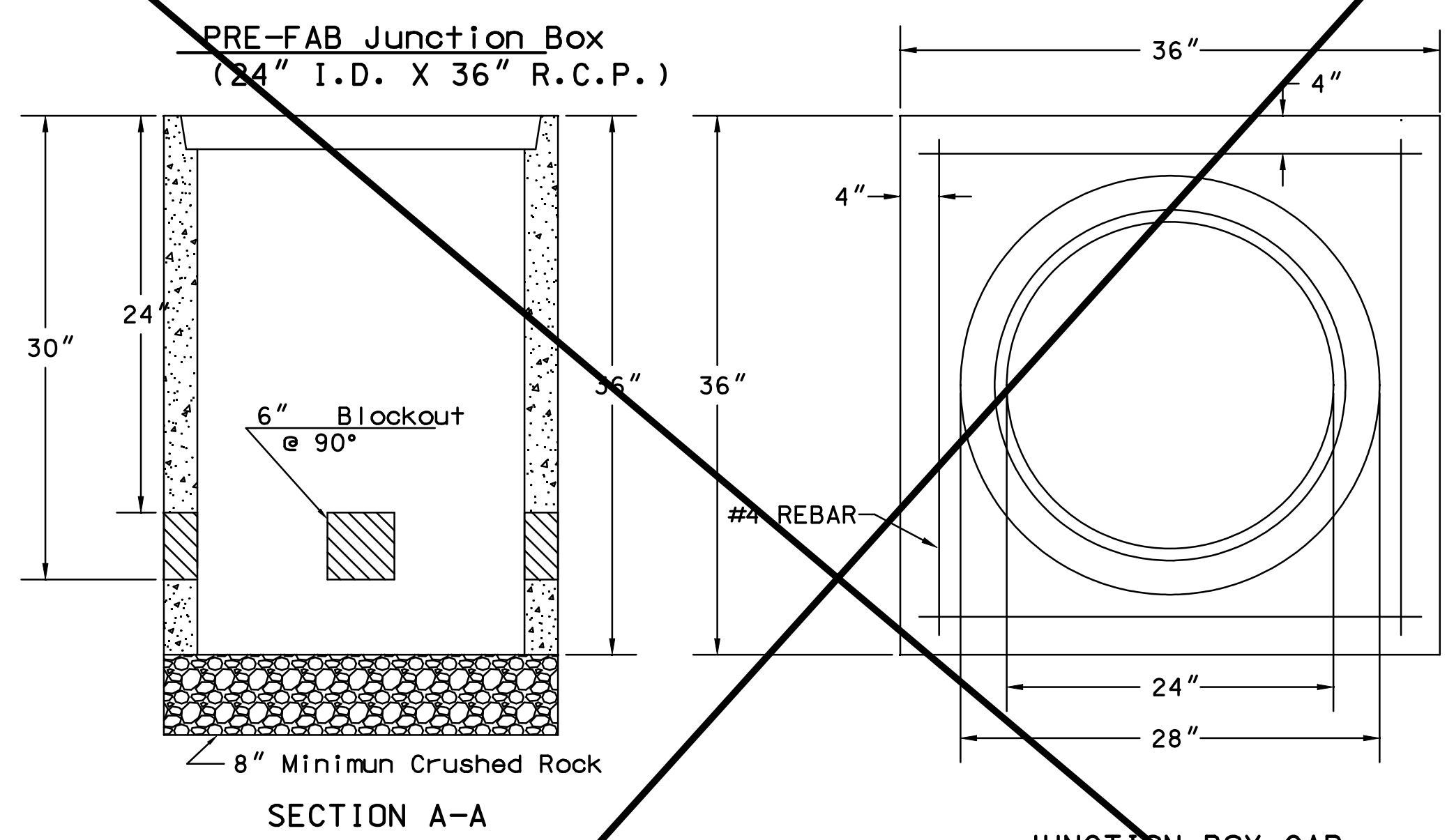
# SERVICE BOX CONSTRUCTION/INSTALLATION DETAILS



# 170 CONTROLLER PAD DETAILS



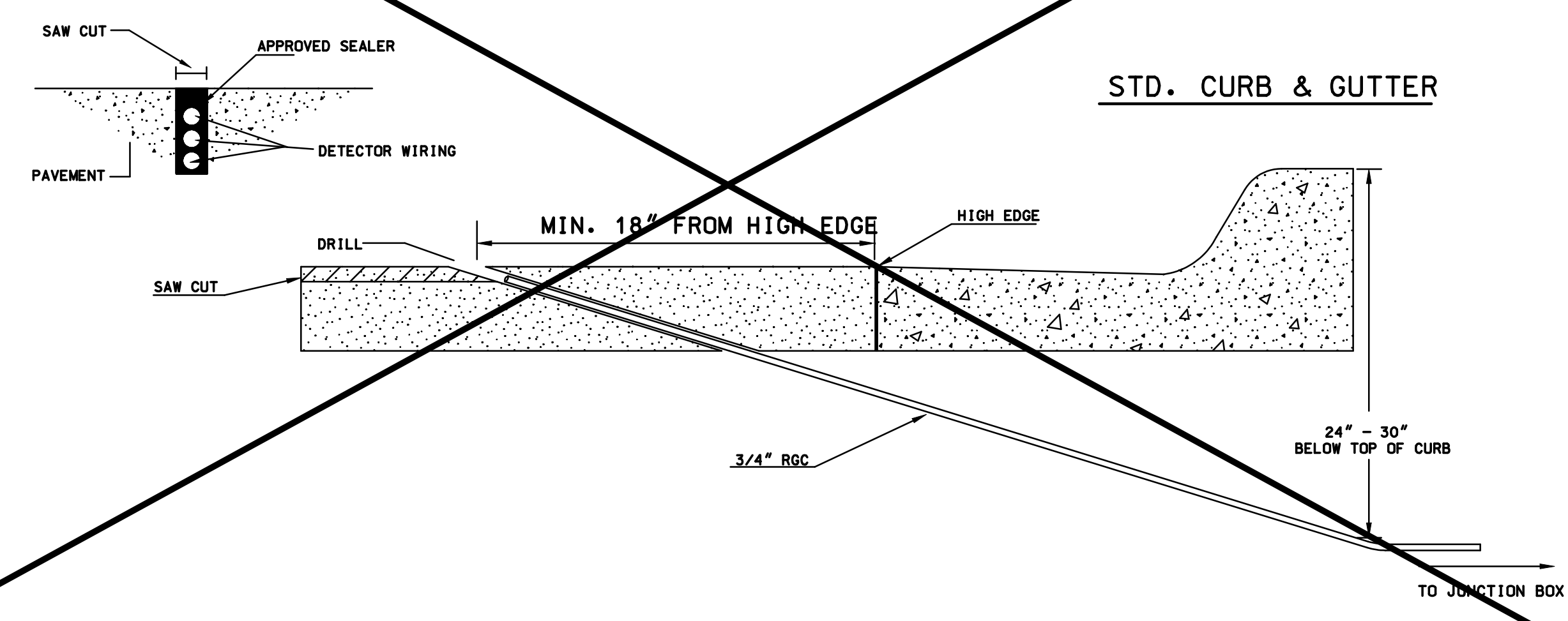
# JUNCTION BOX DETAILS



## NOTES:

- SERVICE & JUNCTION BOX:**
- CONDUIT CONNECTION TO BE FLUSH TO WITHIN 125 mm OF INSIDE FACE OF SIDE WALL. CONDUIT TO DRAIN INTO SERVICE BOX.
  - CONDUIT CONNECTIONS TO SERVICE BOX SHALL BE TERMINATED WITH PLASTIC CABLE BUSHING.
  - CONDUIT SHALL BE SEALED WITH APPROVED SEALER AT INSIDE WALL FACE.
  - ALL SERVICE & JUNCTION BOXES TO HAVE 200 mm OF CRUSHED ROCK.
- TRENCHING:**
- DEPTH TO BE 30" MINIMUM WITH ROCK & STUBBLE FREE BACKFILL TO SERVE AS BEDDING MATERIAL. MAINTAIN MINIMUM CONDUIT DEPTH IN TRENCH.
  - BACKFILL TO BE COMPACTED IN 6" LOOSE LIFTS BY HAND OR MECHANICAL TAMPING TO A 95% STANDARD DENSITY.
- CONDUIT:**
- SLOPE CONDUIT TO DRAIN AS DIRECTED BY THE ENGINEER.
  - 3" RIGID STEEL CONDUIT BTWN. SERVICE BOXES.  
1 1/4" " " " BTWN. SERVICE & JUNCTION BOXES.  
3/4" " " " BTWN. JUNCTION BOXES.  
3/4" " " " BTWN. JUNCTION BOX & DETECTOR LOOP SAW CUT

# CONDUIT/DETECTOR WIRE INSTALLATION DETAILS



\*\*SEE SERVICE BOX INSTALLATION FOR RING & COVER DETAILS.

REV. DATE	COMMENTS	INT

**THE CITY OF WICHITA**

CITY ENGINEER'S OFFICE  
CITY HALL - SEVENTH FLOOR  
455 NORTH MAIN STREET  
WICHITA, KANSAS 67202  
(316) 268-4501  
(316) 268-4114 FAX

119TH STREET

**SERVICE/JUNCTION BOX, CONTROLLER PAD CONSTRUCTION/INSTALLATION DETAILS**

PROJECT NUMBER: 472-84694

DRAWN BY: T.M.      SCALE: NO SCALE      REVISED BY:      DATE: April, 2002

CITY OF WICHITA  
DEPARTMENT OF PUBLIC WORKS

DIVISION OF TRAFFIC ENGINEERING  
PAUL GUNZELMAN, P.E.      TRAFFIC ENGINEER

SHEET 85 OF 149

Dsrn: Oper: SJB Scale: 1"=1' Plot Scale: 1/4"=1' Standards: 062008-sb-dtl.dgn Last Rev: 6-3-2010 By: swb