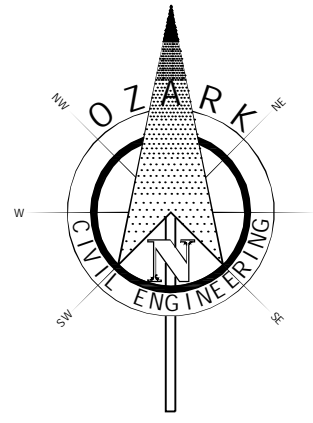
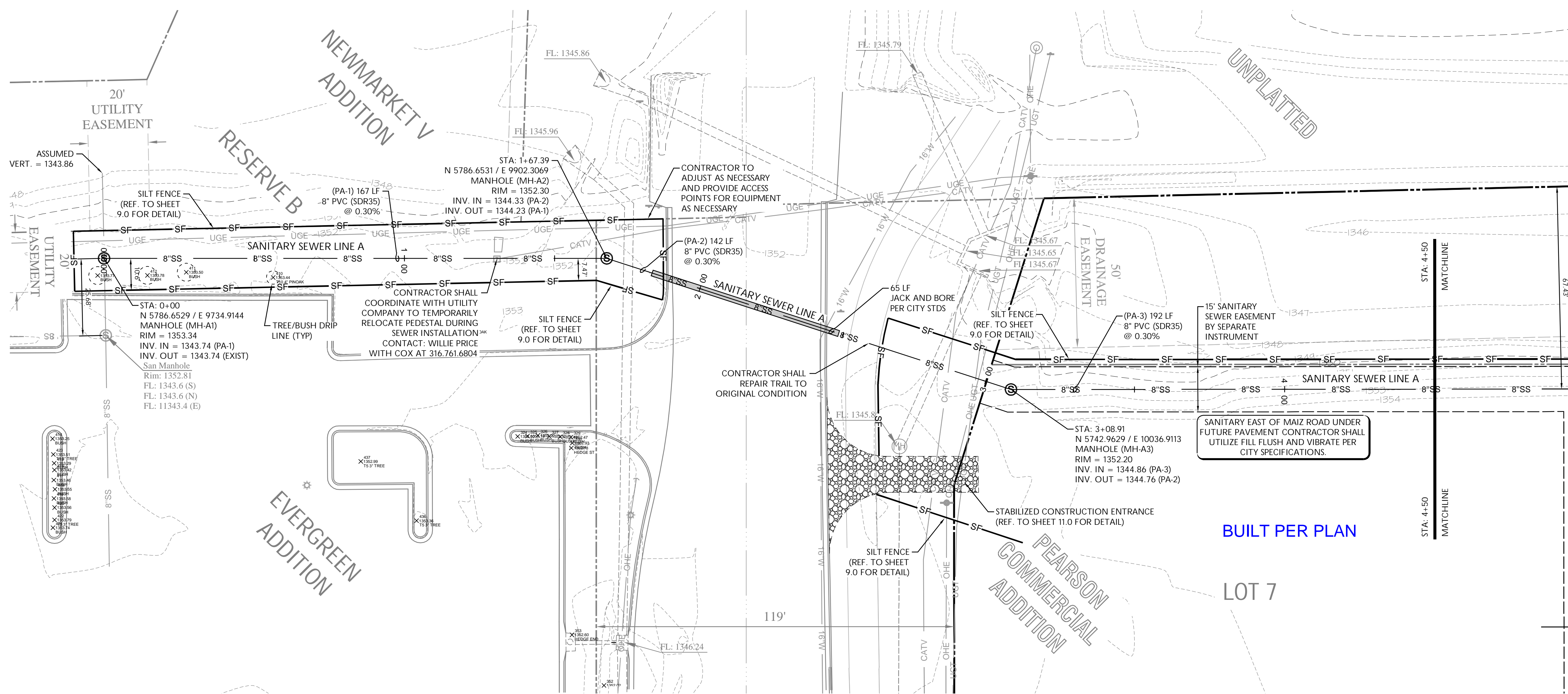




Know what's below. Call before you dig.



0 20' 30' 40' SCALE IN FEET



UTILITY PROPOSED FEATURES	
	BOUNDARY LINE
	RIGHT OF WAY LINE
	EASEMENT LINE
	CONCRETE CURB AND GUTTER
	FENCE
	GUARD RAIL
	RETAINING WALL
	STORM DRAIN (SEE GRADING PLAN FOR SIZE)
	SANITARY SEWER SERVICE
	WATER SERVICE
	UNDERGROUND ELECTRIC SERVICE
	UNDERGROUND TELEPHONE SERVICE
	OVERHEAD ELECTRIC SERVICE
	OVERHEAD TELEPHONE SERVICE
	FIBER OPTIC CABLE SERVICE
	GAS SERVICE
	DRAINAGE STRUCTURES (SEE GRADING PLAN FOR TYPE)
	SANITARY SEWER MANHOLE
	FIRE HYDRANT WITH GUARD POSTS
	UTILITY POLE
	WATER LINE TEE, BEND, VALVE, AND PLUG

UTILITY GENERAL NOTES

ALL SANITARY SEWER LINES SHALL HAVE A MINIMUM COVER OF 3'-0" COVER ABOVE TOP OF PIPE. PROPOSED UTILITIES TO BE BURIED IN THE SAME TRENCH INSTALLATION SHALL BE COORDINATED AND APPROVED BY LOCAL UTILITY COMPANIES.

VERIFY LOCATION AND DEPTH OF EXISTING UTILITY BEFORE CONSTRUCTING PROPOSED UTILITY. CONTRACTOR SHALL COORDINATE ANY DISRUPTIONS TO EXISTING UTILITY SERVICES WITH ADJACENT PROPERTY OWNERS.

ALL ELECTRIC, TELEPHONE AND GAS EXTENSIONS INCLUDING SERVICE LINES SHALL BE CONSTRUCTED TO THE APPROPRIATE UTILITY COMPANY SPECIFICATIONS. ALL UTILITY DISCONNECTIONS SHALL BE COORDINATED WITH THE DESIGNATED UTILITY COMPANIES.

CONSTRUCTION SHALL NOT START ON ANY PUBLIC UTILITY SYSTEM UNTIL WRITTEN APPROVAL HAS BEEN RECEIVED BY THE ENGINEER FROM THE APPROPRIATE GOVERNING AUTHORITY AND CONTRACTOR HAS BEEN NOTIFIED BY THE ENGINEER.

THE MINIMUM HORIZONTAL SEPARATION BETWEEN THE CLOSEST TWO POINTS OF THE WATER AND SEWER LINE IS TEN FEET (10'). THE MINIMUM VERTICAL SEPARATION BETWEEN THE CLOSEST TWO POINTS OF THE WATER AND SEWER LINE IS EIGHTEEN INCHES (18").

PRIOR TO THE CONSTRUCTION OF OR CONNECTION TO ANY STORM DRAIN, SANITARY SEWER, WATER MAIN OR ANY OF THE DRY UTILITIES, THE CONTRACTOR SHALL EXCAVATE, VERIFY AND CALCULATE ALL POINTS OF CONNECTION AND ALL UTILITY CROSSINGS AND INFORM OZARK CIVIL ENGINEERING AND THE OWNER/OWNER OF ANY CONNECTION OR CROSSING FROM THE PLAN. NOTIFICATION SHALL BE MADE A MINIMUM OF 48 HOURS PRIOR TO CONSTRUCTION. OZARK CIVIL ENGINEERING AND ITS CLIENTS SHALL BE HELD HARMLESS IN THE EVENT THAT THE CONTRACTOR FAILS TO MAKE SUCH NOTIFICATION.

ALL WATER AND SEWER LINE PIPE BEDDING SHALL BE INSTALLED PER DETAIL (D122) (SEE DETAIL SHEETS).

CONTRACTOR SHALL BE RESPONSIBLE FOR NOTIFYING THE CITY CONSTRUCTION DIVISION TO SCHEDULE A PRE-CONSTRUCTION MEETING AT LEAST 48 HOURS PRIOR TO STARTING ANY WORK ON THIS PROJECT. CONTRACTOR SHALL OBTAIN ALL NECESSARY PERMITS.

EXISTING UTILITIES ACROSS OR ALONG THE LINE OF THE PROPOSED WORK ARE SHOWN ONLY IN AN APPROXIMATE LOCATION ON THESE PLANS. CONTRACTOR SHALL CALL THE STATE ONE-CALL SYSTEM OR DESIGNATED UTILITY COMPANY PRIOR TO CONSTRUCTION. CONTRACTOR SHALL ON HIS OWN INITIATIVE AND AT NO ADDITIONAL COST, LOCATE ALL UNDERGROUND LINES AND STRUCTURES AS NECESSARY. CONTRACTOR SHALL BE RESPONSIBLE FOR ANY DAMAGE TO UNDERGROUND LINES OR STRUCTURES.

CONTRACTOR SHALL NOT TAP OR OTHERWISE PENETRATE EXISTING WATER AND SEWER MAIN LINES WITHOUT PRIOR APPROVAL FROM THE CITY'S INSPECTOR. CONTRACTOR IS RESPONSIBLE FOR AVOIDING SPILLAGE OF RAW SEWAGE. CONTRACTOR SHALL PROVIDE ALL SEWER PLUGGING AND PLUMBING EQUIPMENT NECESSARY TO AVOID SPILLAGE. CONTRACTOR SHALL NOT OPERATE VALVES ON EXISTING WATER MAINS.

THE EXISTING UTILITIES AND OBSTRUCTIONS SHOWN ARE FROM THE BEST AVAILABLE RECORDS AND SHALL BE VERIFIED BY THE CONTRACTOR TO HIS SATISFACTION PRIOR TO CONSTRUCTION. NECESSARY PRECAUTIONS SHALL BE TAKEN BY THE CONTRACTOR TO PROTECT EXISTING SERVICES AND MARKS, AND ANY DAMAGE TO THEM SHALL BE REPAIRED IMMEDIATELY AT THE CONTRACTOR'S EXPENSE.

IT SHALL BE DISTINCTLY UNDERSTOOD THAT FAILURE TO SPECIFICALLY MENTION WORK WHICH IS REQUIRED TO COMPLETE THE PROJECT SHALL NOT RELIEVE THE CONTRACTOR OF HIS RESPONSIBILITY TO PERFORM SUCH WORK.

CONTRACTOR SHALL MATCH TOP OF PROPOSED SANITARY SEWER MANHOLE TO PROPOSED GRADES. IF A DISCREPANCY OCCURS BETWEEN PROPOSED GRADES AND PROPOSED STRUCTURE TOPS, THE GRADING SHALL GOVERN. IF THE DISCREPANCY IS MORE THAN 4 INCHES THE CONTRACTOR SHALL CONTACT THE ENGINEER OF RECORD.

ALL DIMENSIONS, UNLESS OTHERWISE NOTED, ARE MEASURED TO THE CENTRELINE OF PIPE OR FITTING, FACE OF CURB, THE EDGE OF PAVEMENT, THE EDGE OF SIDEWALK OR THE FACE/CORNER OF THE BUILDING(S). ALL TRENCHING, PIPE LAYING, AND BACK FILLING PROCEDURES SHALL BE IN ACCORDANCE WITH FEDERAL OSHA REGULATIONS.

GENERAL CONTRACTOR SHALL HAVE APPROVAL OF ALL GOVERNING AGENCIES HAVING JURISDICTION OVER THIS SYSTEM PRIOR TO INSTALLATION.

ALL DISTURBED AREAS OF THE SITE WHERE CONSTRUCTION ACTIVITY HAS CEASED FOR MORE THAN 14 DAYS (OR MORE FREQUENT) IF REQUIRED BY THE STATE PERMITS PERMITS SHALL BE TEMPORARILY SEEDED AND WATERED. AREAS OF FINAL GRADING SHALL BE TEMPORARILY OR PERMANENTLY SEEDED.

SITE BENCHMARK

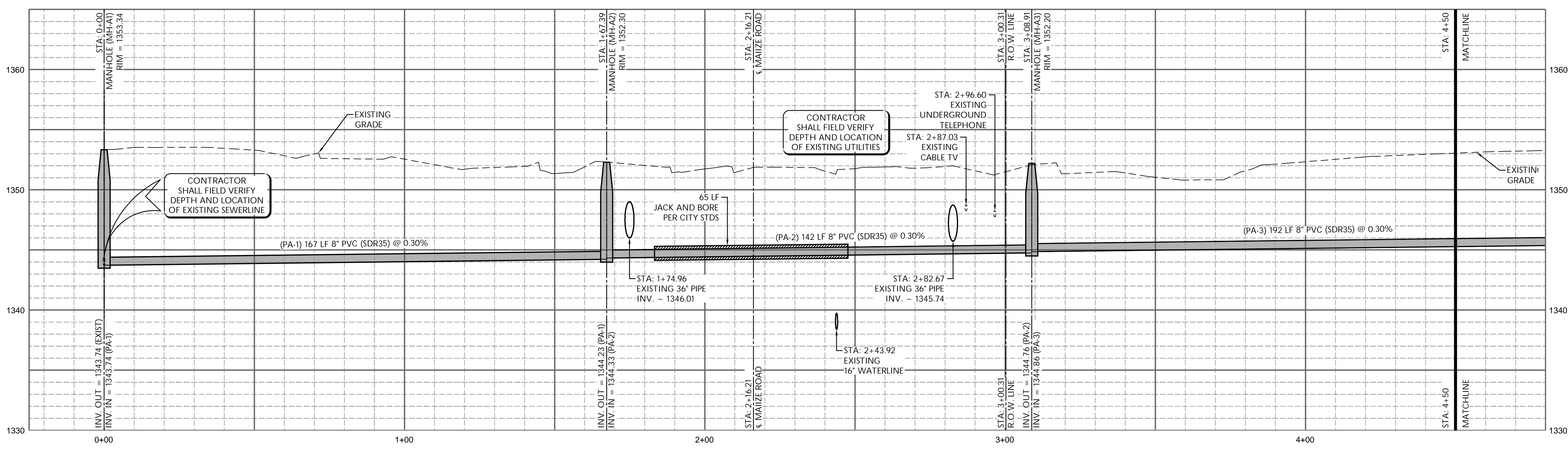
SQUARE CUT ON TOP OF CURB AT NOSE OF ISLAND IN CENTER OF W. CENTRAL PARK STREET ON WEST SIDE OF N. MAIZE ROAD.

ELEVATION = 1351.84

UTILITY DETAIL LIST

Items labeled by the following symbols are shown on this sheet and referenced on detail sheets, which are included as part of this set of plans.

	JACK & BORE DETAIL
	WATER AND SEWER TRENCH BACKFILL DETAILS
	SEWER APPURTENANCES DETAILS



SANITARY SEWER LINE "A" STA: 0+00 TO STA: 4+50
 HORZ. SCALE 1" = 20'
 VERT. SCALE 1" = 5'

BY	JON
DATE	01/25/2011
DESCRIPTION	SHORTENED CASING LENGTH, NOTED USE OF FILL SAND PER CITY COMMENTS
DATE	02/02/2011
DESCRIPTION	ADDED TREE/BUSH DRIP LINE LOCATIONS ON PLAN

SS LINE "A" - STA: 0+00 TO STA: 4+50

SEWER IMPROVEMENT PLANS FOR THE CITY OF WICHITA

EAST OF MAIZE RD AND SOUTH OF 29TH STT N WICHITA, KANSAS

DRAWN BY: JON
 APPV. BY: SM
 DWG. NAME: 10-0998 SPPP ADD 2
 DATE: 01/25/2011
 JOB NO: 10-0998
 SHEET NO:

q:\10-0998 city of wichita ks e maize and 29th st\dwg\addendum 210-0998 ssp add 2.dwg - Plotted on 2/12/2011 2:21:02 PM at a scale of 1:1 to pdf:exchange 4.0 (2x3x3).pc3 by Scott Magee