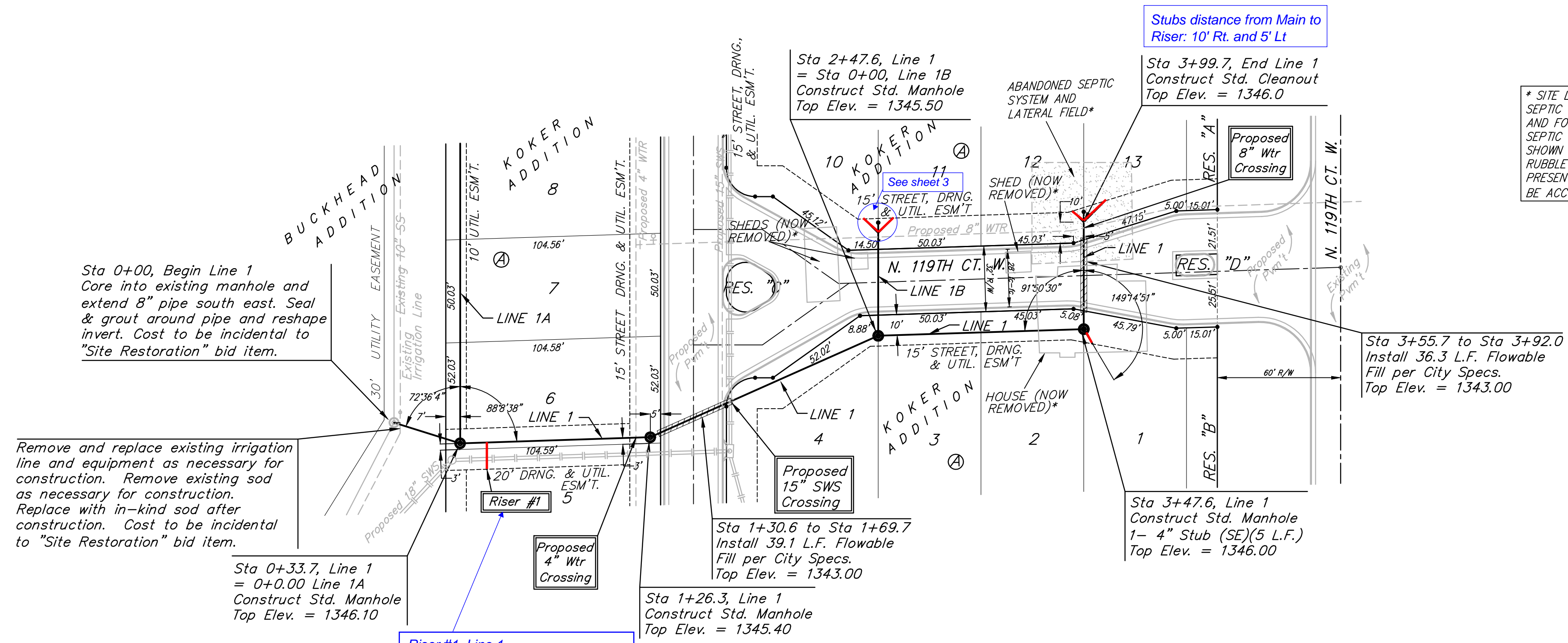


BENCHMARKS

BM #1: City of Wichita Benchmark
Disc - 119th St. W & Lost Creek
(Cowskin) 175' ± north of Lost
Creek Circle, SW corner of RCB,
South end of Hubguard. Elev. =
1339.22 (NGVD29)

BM #2 "□" cut top of curb
eastside of 119th adjacent to fire
hydrant east of house #927.
Elev. = 1342.13 (NGVD29)

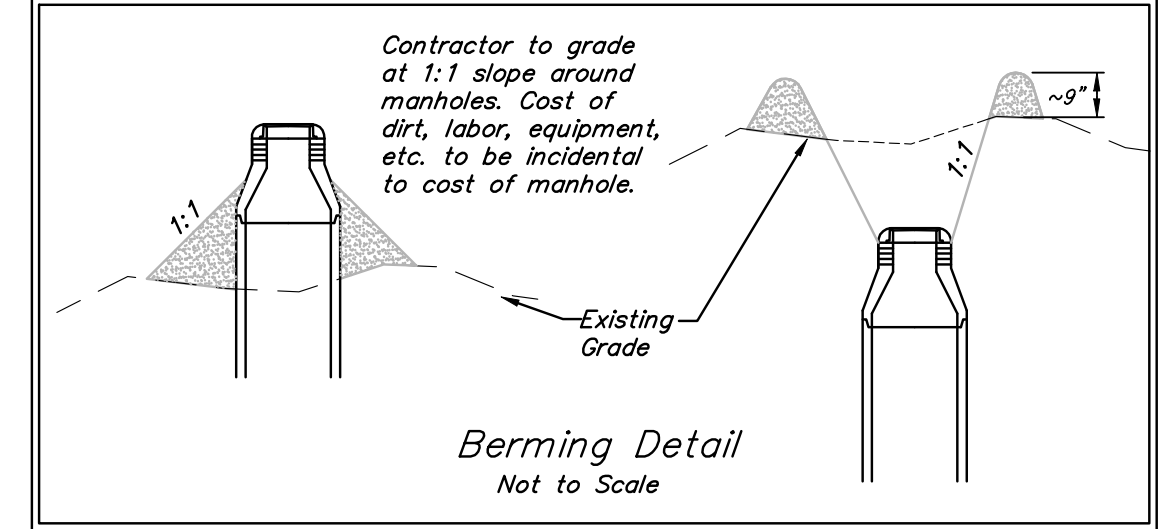


* SITE LOCATION PREVIOUSLY HAD HOUSE, SHED, DRIVE, SEPTIC SYSTEM, ETC. HOUSE AND SHED WERE SCRAPED AND FOUNDATIONS AND CELLARS WERE CAVED IN. SEPTIC SYSTEM WAS ABANDONED IN PLACE AND IS SHOWN IN A LOCATION DESCRIBED BY THE OWNER. SOME RUBBLE AND UNDERGROUND FACILITIES MAY STILL BE PRESENT IN THE PATH OF CONSTRUCTION AND SHOULD BE ACCOUNTED FOR IN THE "SITE CLEARING" BID ITEM.

Scale:
1" = 40' Horizontal
1" = 5' Vertical
• = Iron

Remove trees only as necessary for sanitary sewer construction and only with permission of Developer or Baughman Co. Cost of removal to be incidental to lump sum bid item "Site Clearing".

All trench and manhole excavation areas from Sta. 1+69.7 to Sta. 3+47.6, Line 1 shall be backfilled with sand. The sand backfill shall be within two feet of existing grade and shall be water-jetted and vibrated during backfilling. All costs shall be subsidiary to pipe cost.



Remove and replace existing irrigation line and equipment as necessary for construction. Remove existing sod as necessary for construction. Replace with in-kind sod after construction. Cost to be incidental to "Site Restoration" bid item.

Sta 0+00, Begin Line 1
Core into existing manhole and extend 8" pipe south east. Seal & grout around pipe and reshape invert. Cost to be incidental to "Site Restoration" bid item.

Sta 0+33.7, Line 1 = 0+0.00 Line 1A
Construct Std. Manhole
Top Elev. = 1346.10

Riser #1, Line 1
Sta. 0+46.71, Rt.
Distance from Main to Riser - 13' Rt.
Distance from Upstream MH - 77'
Distance from Downstream MH - 12'

Sta 1+26.3, Line 1
Construct Std. Manhole
Top Elev. = 1345.40

Sta 1+30.6 to Sta 1+69.7
Install 39.1 L.F. Flowable Fill per City Specs.
Top Elev. = 1343.00

Sta 3+47.6, Line 1
Construct Std. Manhole
1- 4" Stub (SE) (5 L.F.)
Top Elev. = 1346.00

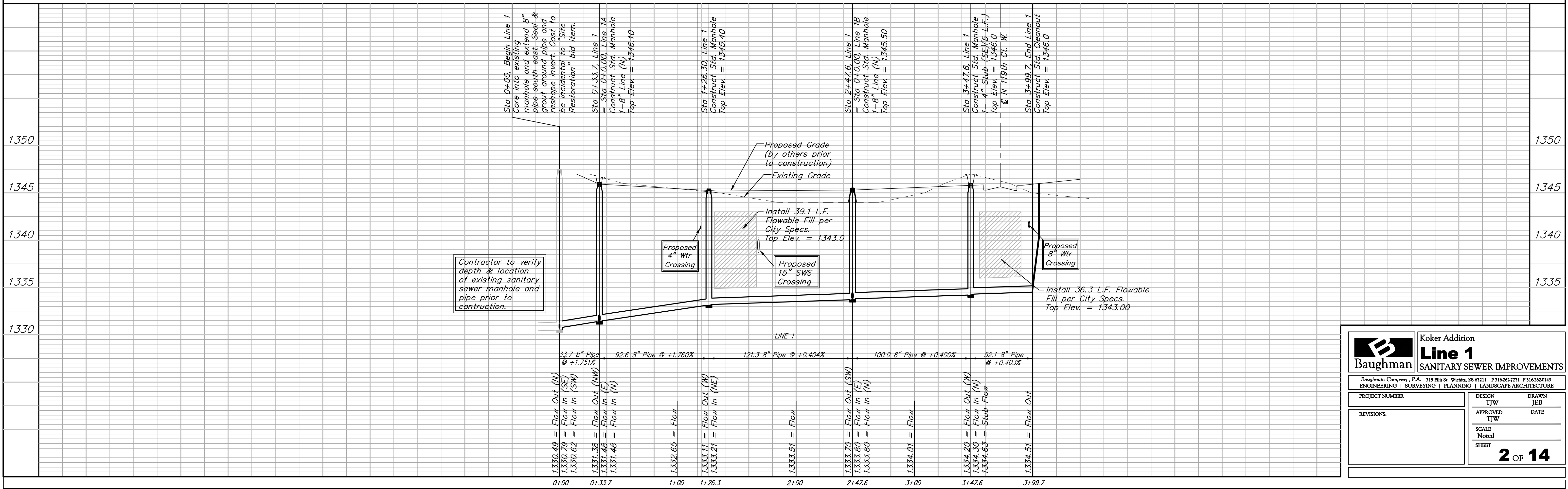
Sta 3+55.7 to Sta 3+92.0
Install 36.3 L.F. Flowable Fill per City Specs.
Top Elev. = 1343.00

SEWER SERVICE TABLE

NUMBER	TYPE	LOCATION			STATION \ DIRECTION	FOR INFORMATION ONLY	
		LOT NO.	BLOCK NO.	LINE NO.		APPROXIMATE LENGTH 4" PIPE	
1	8" X 4" Tee	5	A	1	0+46.71/Rt.	VERTICAL	HORIZONTAL
						12' 13"	5' 13"

Note:
Riser #1 was installed 13' horizontally to pass under SWS pipe.

NOTE: Vertical Riser Pipe shall be extended to 2' minimum above ground water elevation and 4' maximum below proposed ground elevation.



Baughman

Baughman Company, P.A. 315 Ellis St. Wichita, KS 67211 P 316-262-7271 F 316-262-0149
ENGINEERING | SURVEYING | PLANNING | LANDSCAPE ARCHITECTURE

Koker Addition
Line 1
SANITARY SEWER IMPROVEMENTS

DESIGN: TJW
APPROVED: TJW
SCALE: Noted
SHEET: **2 OF 14**