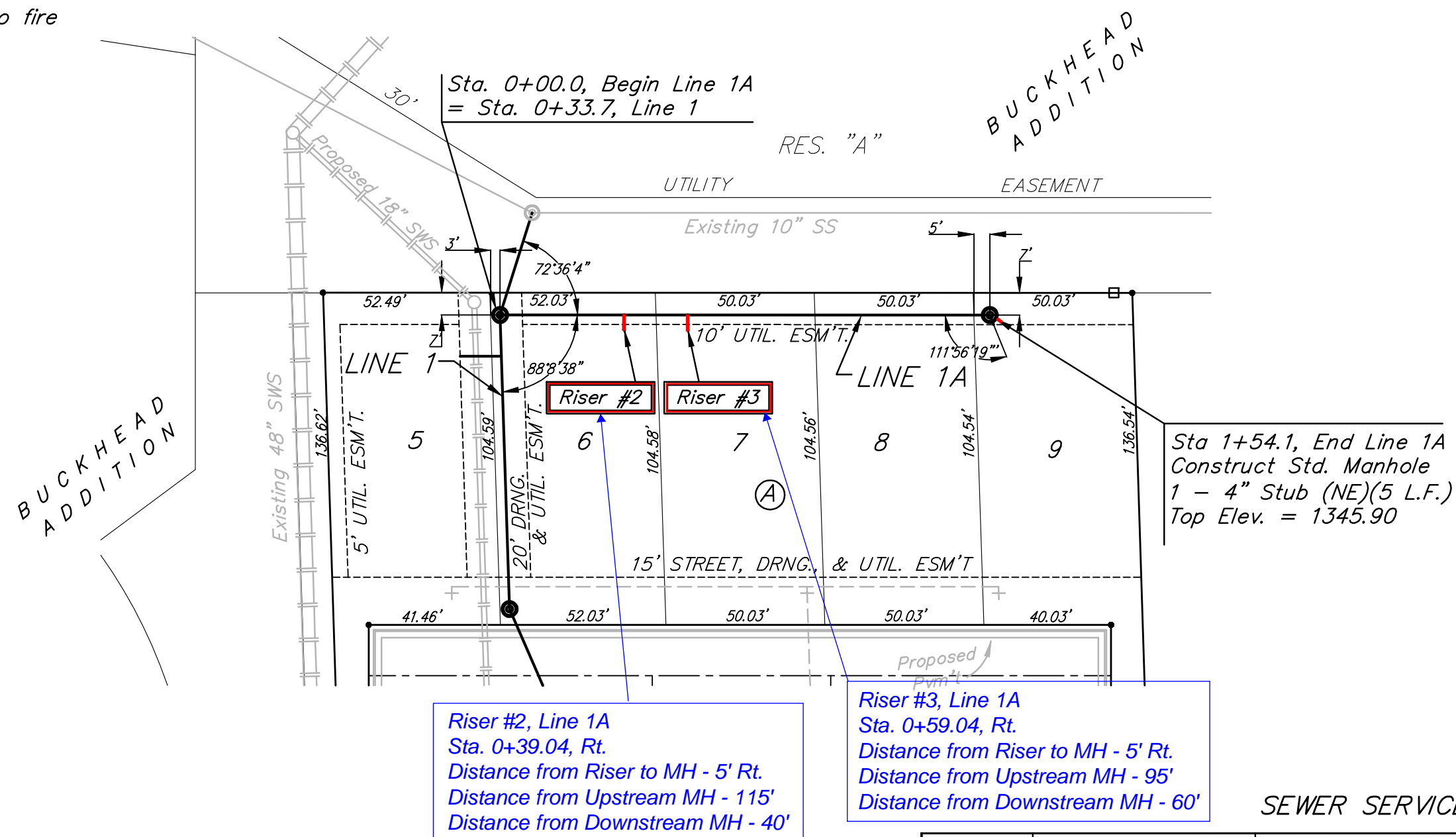


BENCHMARKS
 BM #1: City of Wichita Benchmark
 Disc - 119th St. W & Lost Creek
 (Cowskin) 175' ± north of Lost
 Creek Circle, SW corner of RCB,
 South end of Hubguard. Elev. =
 1339.22 (NGVD29)

BM #2 "□" cut top of curb
 eastside of 119th adjacent to fire
 hydrant east of house #927.
 Elev. = 1342.13 (NGVD29)



Riser #2, Line 1A
 Sta. 0+39.04, Rt.
 Distance from Riser to MH - 5' Rt.
 Distance from Upstream MH - 115'
 Distance from Downstream MH - 40'

Riser #3, Line 1A
 Sta. 0+59.04, Rt.
 Distance from Riser to MH - 5' Rt.
 Distance from Upstream MH - 95'
 Distance from Downstream MH - 60'

SEWER SERVICE TABLE

NUMBER	TYPE	LOCATION				FOR INFORMATION ONLY	
		LOT NO.	BLOCK NO.	LINE NO.	STATION \ DIRECTION	APPROXIMATE LENGTH 4" PIPE	VERTICAL
2	8" X 4" Tee	6	A	1A	0+39.04/Rt.	12'	5'
3	8" X 4" Tee	7	A	1A	0+59.04/Rt.	12'	5'

NOTE: Vertical Riser Pipe shall be extended to 2' minimum above ground water elevation and 4' maximum below proposed ground elevation.

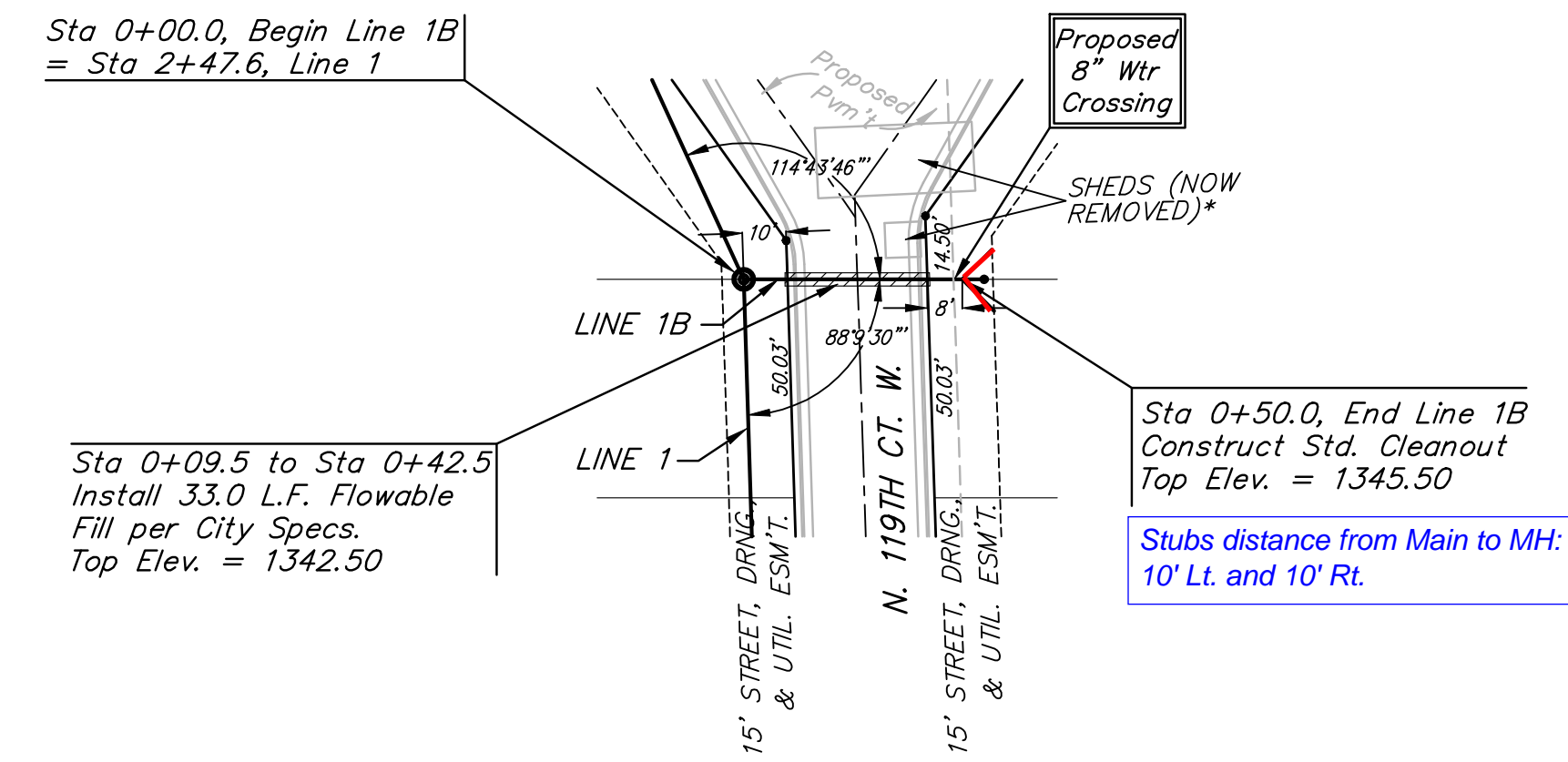
Remove trees only as necessary
 for sanitary sewer construction
 and only with permission of
 Developer or Baughman Co.
 Cost of removal to be incidental
 to lump sum bid item "Site
 Clearing".



Scale:
 1" = 40' Horizontal
 1" = 5' Vertical
 • = Iron



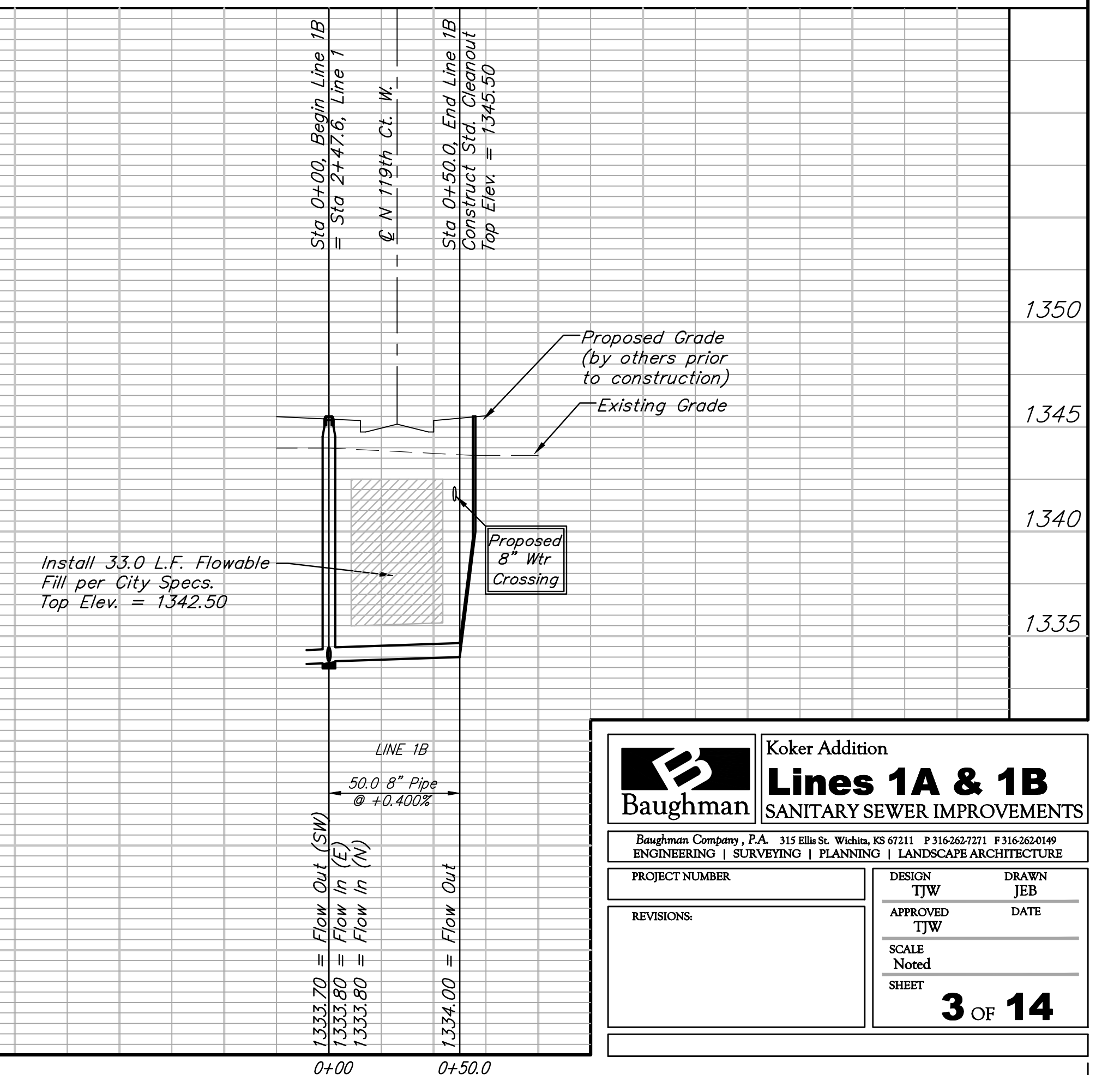
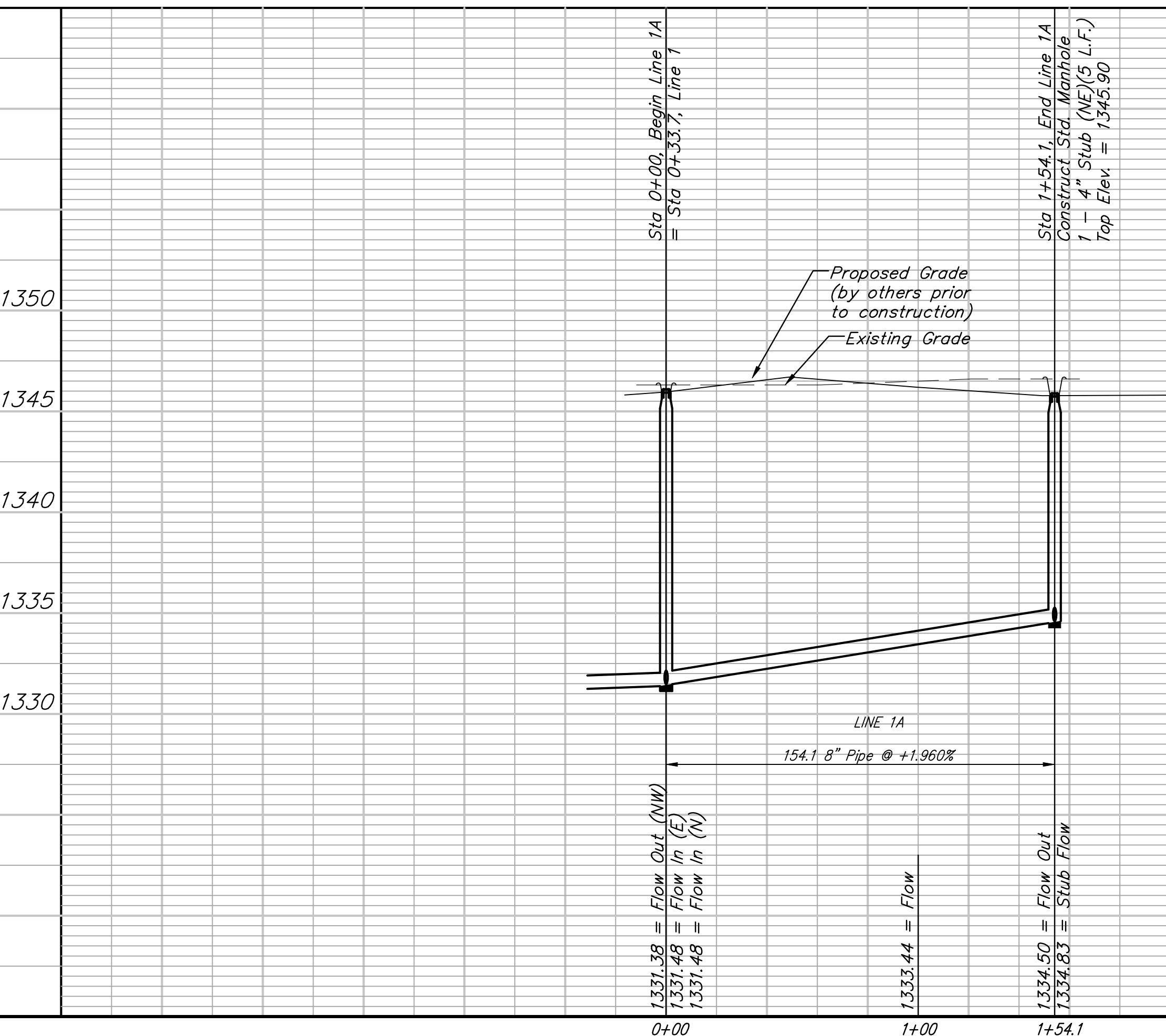
Scale:
 1" = 40' Horizontal
 1" = 5' Vertical
 • = Iron



Sta 0+09.5 to Sta 0+42.5
 Install 33.0 L.F. Flowable
 Fill per City Specs.
 Top Elev. = 1342.50

Sta 0+50.0, End Line 1B
 Construct Std. Cleanout
 Top Elev. = 1345.50
 Stubs distance from Main to MH:
 10' Lt. and 10' Rt.

* SITE LOCATION PREVIOUSLY HAD HOUSE, SHED, DRIVE, SEPTIC SYSTEM, ETC. HOUSE AND SHED WERE SCRAPED AND FOUNDATIONS AND CELLARS WERE CAVED IN. SEPTIC SYSTEM WAS ABANDONED IN PLACE AND IS SHOWN IN A LOCATION DESCRIBED BY THE OWNER. SOME RUBBLE AND UNDERGROUND FACILITIES MAY STILL BE PRESENT IN THE PATH OF CONSTRUCTION AND SHOULD BE ACCOUNTED FOR IN THE "SITE CLEARING" BID ITEM.



	Koker Addition	
	Lines 1A & 1B SANITARY SEWER IMPROVEMENTS	
<small>Baughman Company, P.A. 315 Ellis St. Wichita, KS 67211 P 316-262-7271 F 316-262-0149 ENGINEERING SURVEYING PLANNING LANDSCAPE ARCHITECTURE</small>		
PROJECT NUMBER	DESIGN	DRAWN
REVISIONS:	TJW	JEB
	APPROVED	DATE
	TJW	
	SCALE	
	Noted	
	SHEET	
		3 OF 14