

# PRIVATE SANITARY SEWER IMPROVEMENTS PETERSON ELEMENTARY SCHOOL ADDITION PROJECT NUMBER 2095 PPS (607861)

## INDEX OF SHEETS

(CITY SUBMITTAL INDEX)  
C2.0 TITLE SHEET  
C2.1 SS PLAN & PROFILE  
C2.2 TYPE P MANHOLE DETAILS

## BENCHMARKS

BENCH MARK: CHISELED SQUARE ON THE TOP OF CURB AT THE SOUTHWEST CORNER OF DELANO AVENUE AND CADDY LANE. ELEVATION = 144.09 (CITY DATUM)

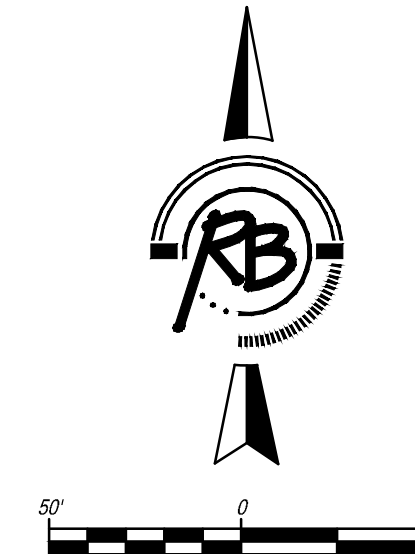
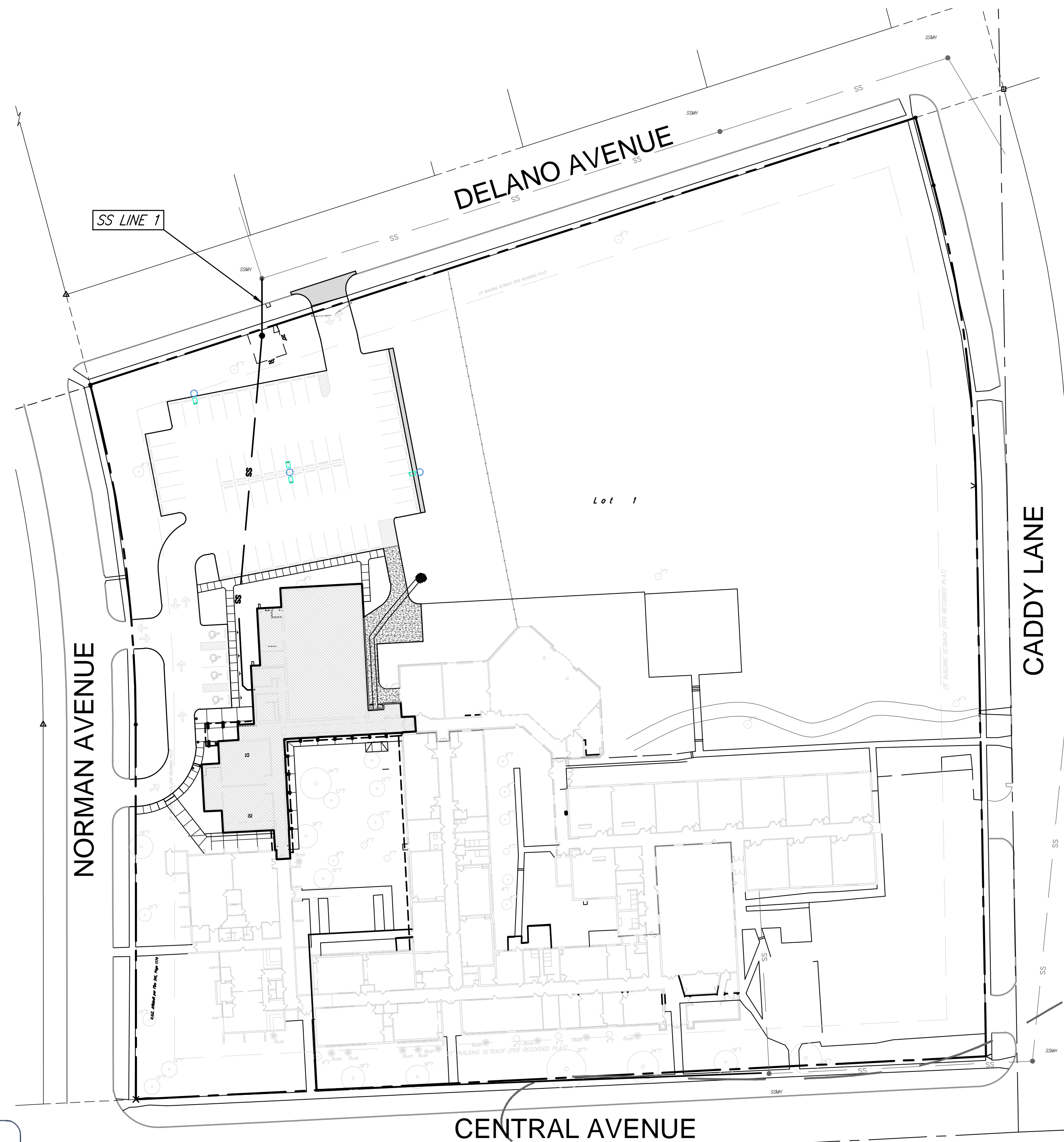
## GENERAL NOTES

- Contractor will be required to provide a minimum notice of 72 hours to utility companies prior to starting any excavation as follows:  

Kansas One-Call	687-2470
-----------------	----------

The Contractor must notify the following in case of an emergency:

Cox Communications	262-0661
Kansas Gas Service	383-8600
Westar Energy	383-8600
AT&T	1-800-286-8313
City of Wichita Water Utility	268-6000
Black Hills Energy	1-800-303-0357
- Existing utilities and their location, as shown on the plans, represent the best information obtainable for design. Location information has been obtained from the various utility companies and is either from company record drawings or company-provided field locations. The Contractor will be required to work around existing utilities within the right-of-way which do not conflict with proposed construction.
- A saw cut of the full depth of existing surface courses or pavement thickness shall be provided at locations where proposed construction abuts an existing surface course or pavement for which partial removal of that surface or pavement is required, except when such saw cuts are within three (3) feet of an existing joint the limits of removal shall be extended to the existing joint.
- This project is limits of a larger project which will include building construction. A Storm Water Pollution Prevention Plan is on file with the Kansas Department of Health and Environment.
- This project is to be constructed in accordance with City of Wichita Standard Specifications for the Construction of City Projects and Policy on Construction of Infrastructure by Private Contract.
- No work shall begin on this project before required bonds are submitted to the City of Wichita, and the project inspector has been notified.
- All areas of public R/W disturbed by construction of this project are to be restored in accordance with Administrative Regulation AR 6.5 of the City of Wichita.
- One-lane traffic on Delano in each direction shall be maintained at all times. Traffic control shall be positioned to the latest MUTCD standard specifications.



APPROVED AS NOTED  
BY CITY ENGINEER OF WICHITA

Sanitary Sewers Julianne Kellman 3-14-11

Storm Sewers \_\_\_\_\_

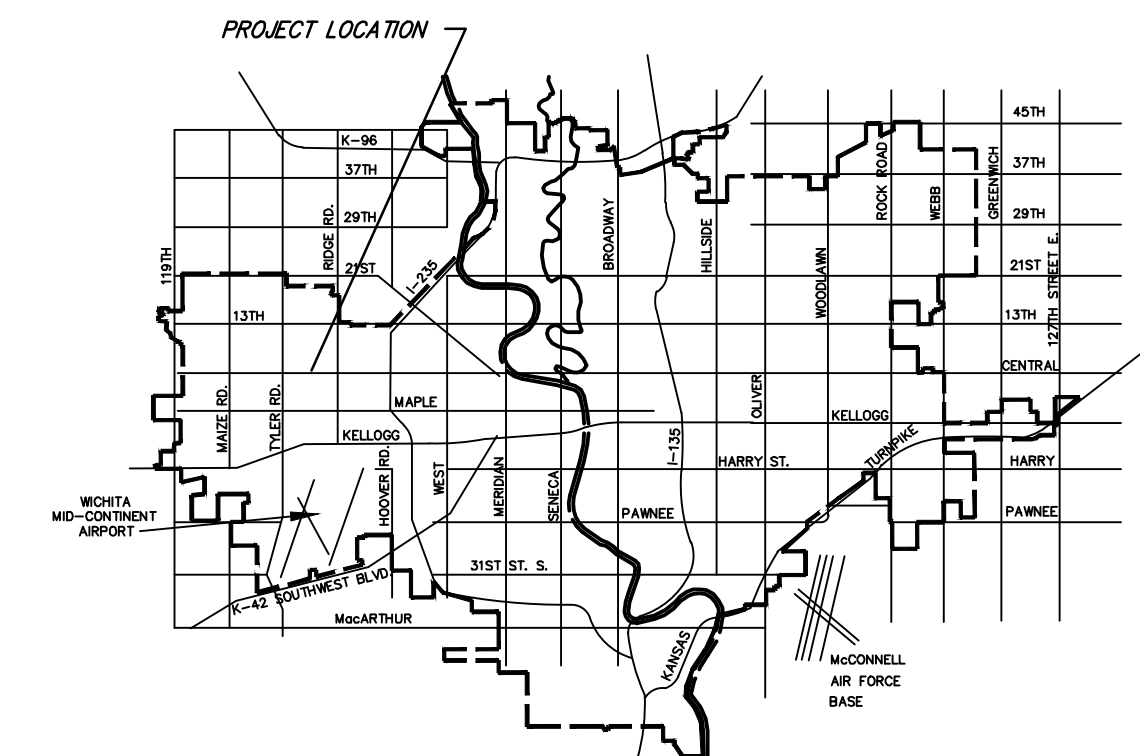
Driveway Approaches \_\_\_\_\_

Water Mains \_\_\_\_\_

Paving \_\_\_\_\_

NOTE TO CONTRACTORS

Inspection and testing for this project are to be provided by a Licensed Consulting Engineering Firm under contract with the Owner/Developer. Said inspection to be in accordance with the City of Wichita standard construction engineering practices and certified by a Licensed Professional Engineer. No work shall be performed in dedicated easements or public right-of-way by the Contractor without such inspection, nor shall any work be commenced without written authorization by the City Engineer.

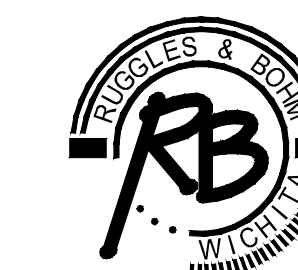
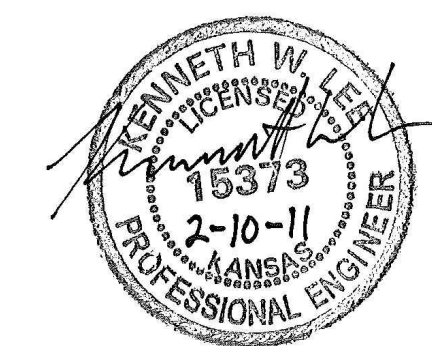


VICINITY MAP

Release Date: June 22, 2011  
:APRosas 6/23/2011

AS BUILTS	
Contractor: McCullough Excavation, Inc.  6/20/2011	Project Inspector: Tom Jones  <b>kemiller</b> engineering 516 S. Market, Wichita, KS 67202 (316)264-0242

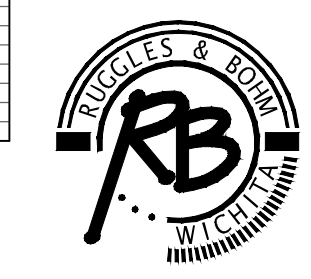
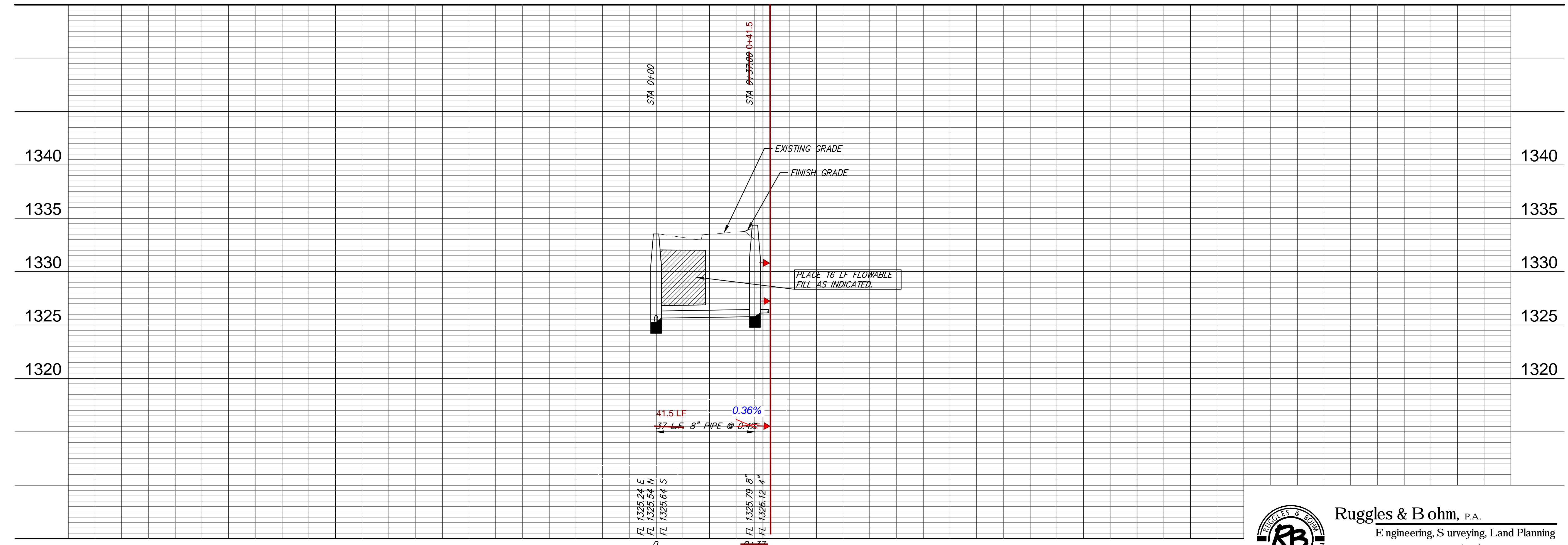
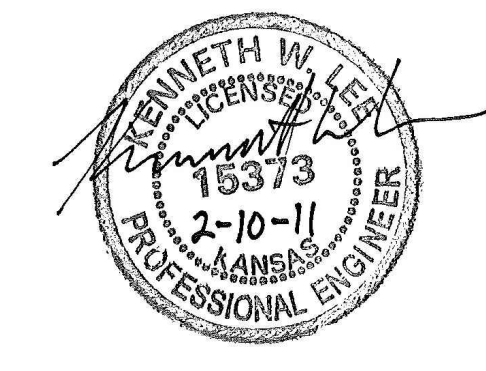
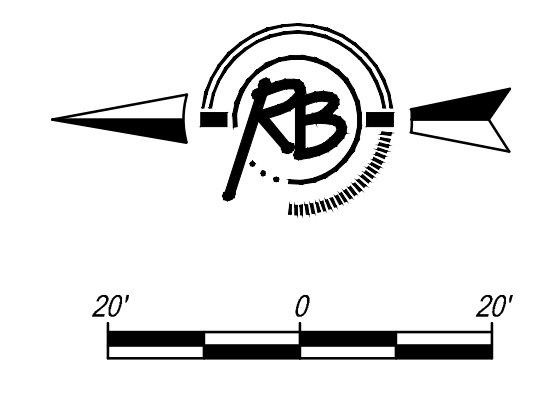
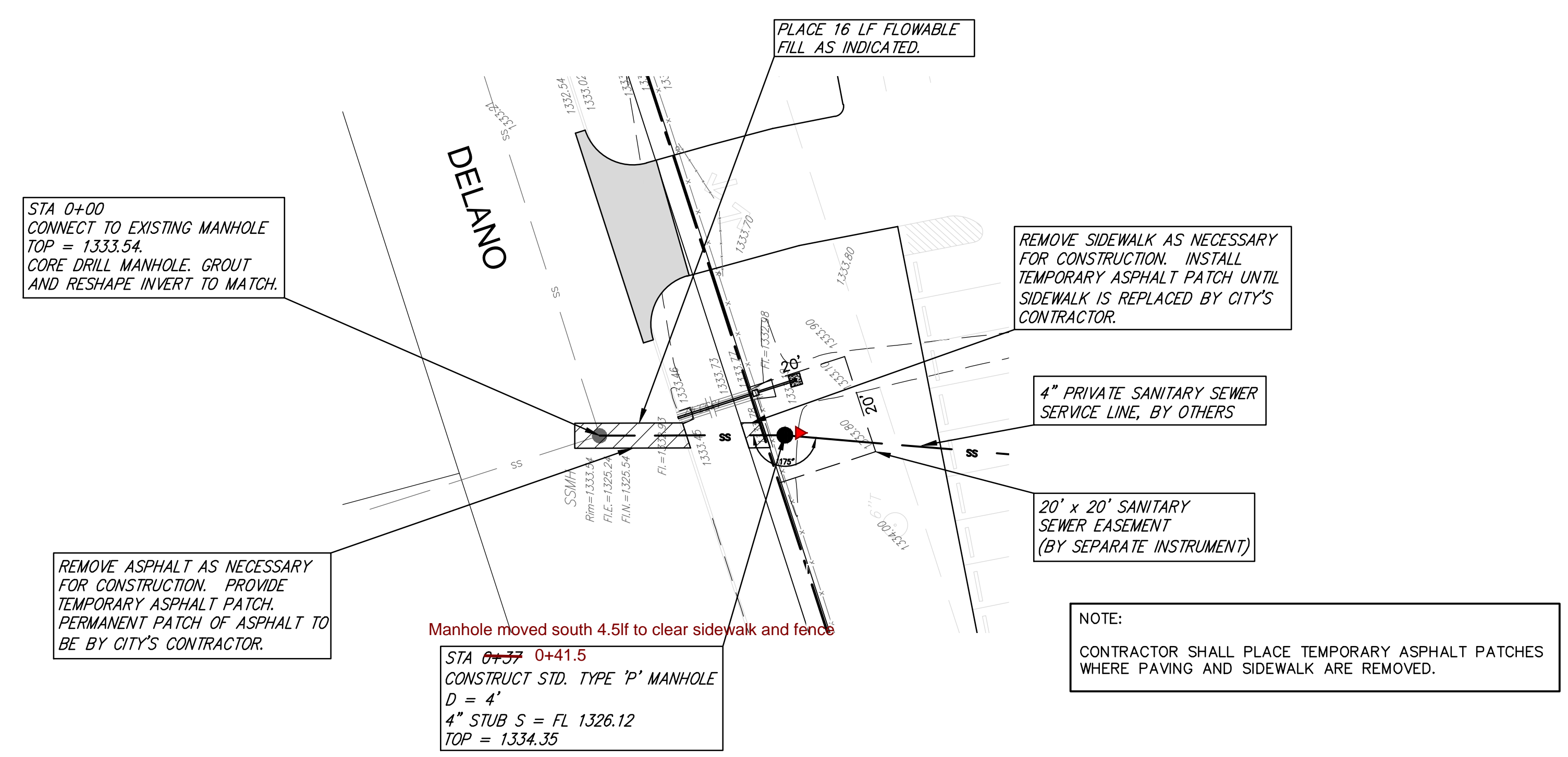
CITY OF WICHITA, KANSAS  
JAMES L. ARMOUR, P.E., CITY ENGINEER



Ruggles & Bohm, P.A.  
Engineering, Surveying, Land Planning  
924 North Main (316) 264-8008  
Wichita, Kansas 67203 (316) 264-4621 fax  
www.rbkansas.com E-mail: info@rbkansas.com

BID SET  
09 FEB 2011  
SS Cover  
BID NO. 11-25044  
C2.0

SPANGENBERG PHILLIPS TICE ARCHITECTURE  
 121 N Mead Ste 201 Wichita KS 67202  
 T 316.267.4002 F 316.267.1509  
 www.sptarchitecture.com  
 PETERSON ELEMENTARY SCHOOL ADDITION  
 USD 259 WICHITA SCHOOL DISTRICT  
 9710 WEST CENTRAL - WICHITA, KS 67212



**Ruggles & Bohm, P.A.**  
 Engineering, Surveying, Land Planning  
 924 North Main (316) 264-8008  
 Wichita, Kansas 67203 (316) 264-4621 fax  
 www.rbkansas.com E-mail: info@rbkansas.com