

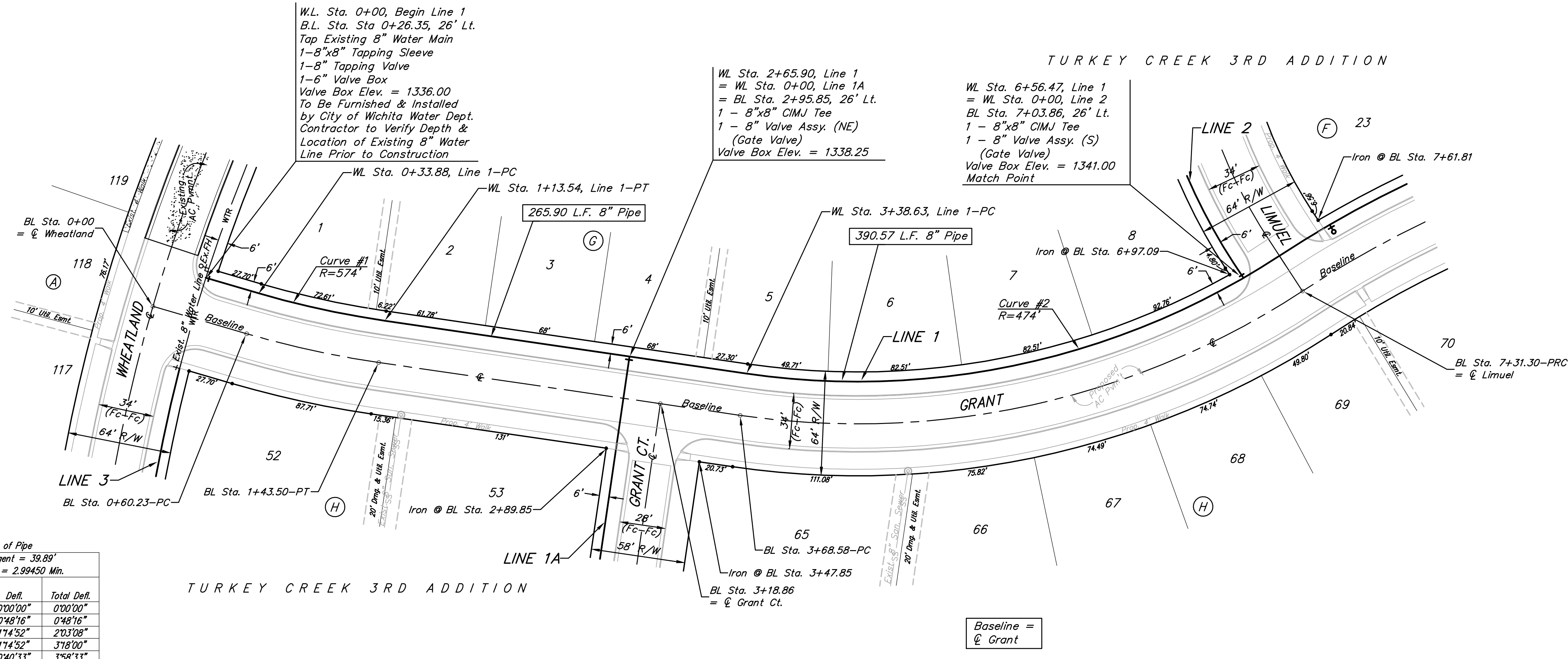
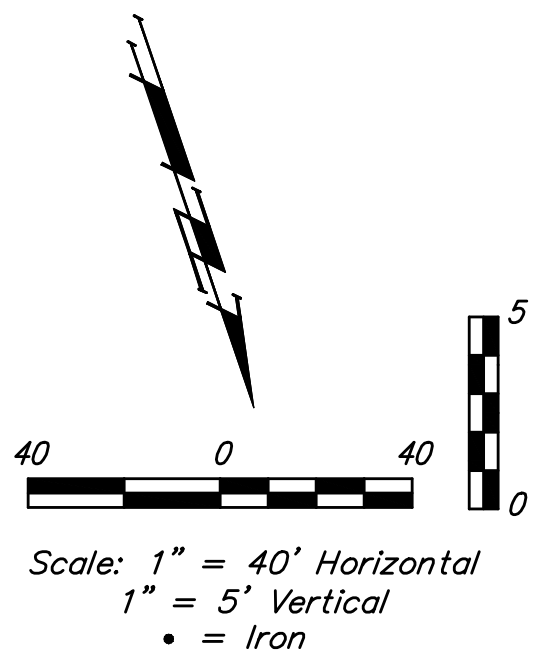
BENCHMARKS:
 BM #1: 135th St. W. & Pawnee
 City of Wichita Benchmark Disc,
 northeast corner of intersection
 on SW corner of concrete base
 of high line pole.
 Elev. = 1359.65 NGVD29

BM #2: City of Wichita
 Benchmark Disc, 0.4 Mi. South of
 Kellogg on 135th St. W., west
 side of concrete base for high
 line pole, west of K.C.&E.
 Substation, 135± south of
 railroad tracks on east side of
 135th St. W.
 Elev. = 1367.77 NGVD29

W.L. Sta. 0+00, Begin Line 1
 B.L. Sta. Sta 0+26.35, 26' Lt.
 Tap Existing 8" Water Main
 1-8"x8" Tapping Sleeve
 1-8" Tapping Valve
 1-6" Valve Box
 Valve Box Elev. = 1336.00
 To Be Furnished & Installed
 by City of Wichita Water Dept.
 Contractor to Verify Depth &
 Location of Existing 8" Water
 Line Prior to Construction

W.L. Sta. 2+65.90, Line 1
 = W.L. Sta. 0+00, Line 1A
 = B.L. Sta. 2+95.85, 26' Lt.
 1 - 8"x8" CIMJ Tee
 1 - 8" Valve Assy. (NE)
 (Gate Valve)
 Valve Box Elev. = 1338.25

W.L. Sta. 6+56.47, Line 1
 = W.L. Sta. 0+00, Line 2
 B.L. Sta. 7+03.86, 26' Lt.
 1 - 8"x8" CIMJ Tee
 1 - 8" Valve Assy. (S)
 (Gate Valve)
 Valve Box Elev. = 1341.00
 Match Point

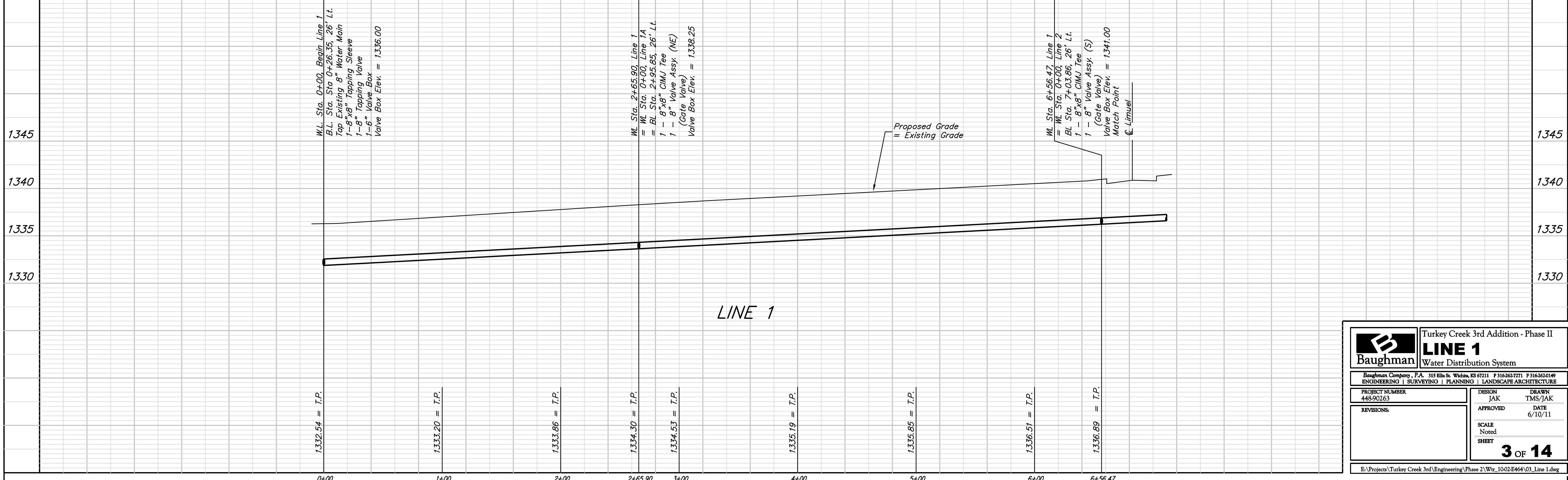


Curve #1
 Curve Data Based on Centerline of Pipe
 Rad. = 574' Delta = 75°05' Tangent = 39.89'
 Arc = 79.66' L.C. = 79.59' Def./Ft. = 2.99450 Min.

Station	Arc	Chord 6' Left	Deft.	Total Deft.
0+33.88	-	-	0°00'00"	0°00'00"
0+50.00	16.12'	15.95'	0°48'16"	0°48'16"
0+75.00	25.00'	24.74'	1°14'52"	2°03'08"
1+00.00	25.00'	24.74'	1°14'52"	3°18'00"
1+13.54	13.54'	13.40'	0°40'33"	3°58'33"

Curve #2
 Curve Data Based on Centerline of Pipe
 Rad. = 474' Delta = 41°33'54" Tangent = 179.89'
 Arc = 343.86' L.C. = 336.37' Def./Ft. = 3.62633 Min.

Station	Arc	Chord 6' Left	Deft.	Total Deft.
3+38.63	-	-	0°00'00"	0°00'00"
3+50.00	11.37'	11.23'	0°41'14"	0°41'14"
3+75.00	25.00'	24.68'	1°30'39"	2°11'53"
4+00.00	25.00'	24.68'	1°30'39"	3°42'33"
4+25.00	25.00'	24.68'	1°30'39"	5°13'12"
4+50.00	25.00'	24.68'	1°30'39"	6°43'52"
4+75.00	25.00'	24.68'	1°30'39"	8°14'31"
5+00.00	25.00'	24.68'	1°30'39"	9°45'11"
5+25.00	25.00'	24.68'	1°30'39"	11°15'50"
5+50.00	25.00'	24.68'	1°30'39"	12°46'30"
5+75.00	25.00'	24.68'	1°30'39"	14°17'09"
6+00.00	25.00'	24.68'	1°30'39"	15°47'49"
6+25.00	25.00'	24.68'	1°30'39"	17°18'28"
6+50.00	25.00'	24.68'	1°30'39"	18°49'08"
6+75.00	25.00'	24.68'	1°30'39"	20°19'47"
6+82.49	7.49'	7.40'	0°27'10"	20°46'57"



Turkey Creek 3rd Addition - Phase II

LINE 1
Water Distribution System

Baughman Company, P.A. 315 Ellis St. Wichita, KS 67211 F 316-262-7271 F 316-262-0149
 ENGINEERING | SURVEYING | PLANNING | LANDSCAPE ARCHITECTURE

PROJECT NUMBER 448-90263	DESIGN JAK	DRAWN TMS/JAK
REVISIONS:	APPROVED	DATE 6/10/11
SCALE Noted		3 OF 14
SHEET		

E:\Projects\Turkey Creek 3rd\Engineering\Phase 2\Wtr_1002-E464\03_Line 1.dwg