

BENCHMARKS:
 BM #1: 135th St. W. & Pawnee
 City of Wichita Benchmark Disc,
 northeast corner of intersection
 on SW corner of concrete base
 of high line pole.
 Elev. = 1359.65 NGVD29

BM #2: City of Wichita
 Benchmark Disc, 0.4 Mi. South of
 Kellogg on 135th St. W., west
 side of concrete base for high
 line pole, west of K.G.&E.
 Substation, 135± south of
 railroad tracks on east side of
 135th St. W.
 Elev. = 1367.77 NGVD29

WL Sta. 6+56.47, Line 1
 = WL Sta. 0+00, Line 2
 BL Sta. 7+03.86, 26' Lt.
 Match Point

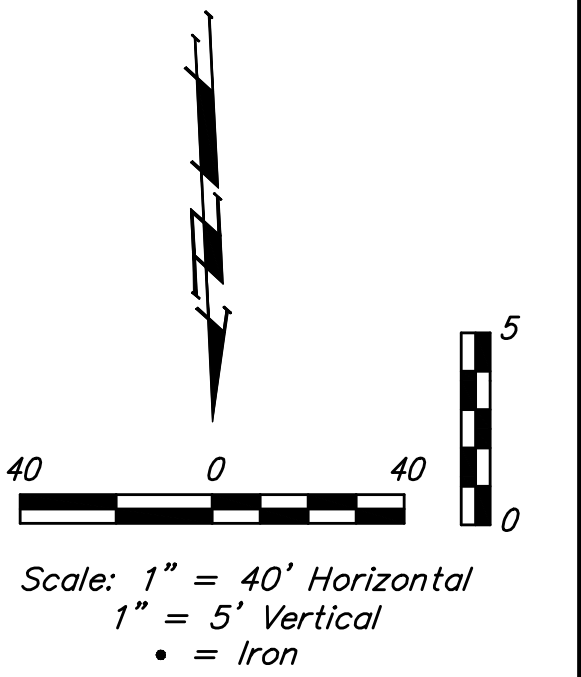
WL Sta. 7+18.92, Line 1
 BL Sta. 7+66.33, 26' Lt.
 1 - Fire Hydrant Assy.
 L = 5'
 Bury Line Elev. = 1341.15
 Valve Box Elev. = 1341.25

WL Sta. 10+70.00, Line 1
 BL Sta. 11+03.93, 26' Lt.
 1 - 8" 45° Bend (V)
 WL Sta. 10+37.83, Line 1
 BL Sta. 10+72.98, 26' Lt.
 1 - 8" Line Valve Assy.
 (Gate Valve)
 Valve Box Elev. = 1342.05

WL Sta. 11+05.00, Line 1
 BL Sta. 11+39.85, 26' Lt.
 1 - 8" 45° Bend (V)
 Remove existing 8" cap
 and connect to existing 8"
 waterline pipe

WL Sta. 11+10.00, Line 1
 BL Sta. 11+45.00, 26' Lt.
 1 - 8" 45° Bend (V)

WL Sta. 11+24.00, End Line 1
 BL Sta. 11+59.78, 26' Lt.
 1 - 2" Blowoff Assy.
 Valve Box Elev. = 1342.10

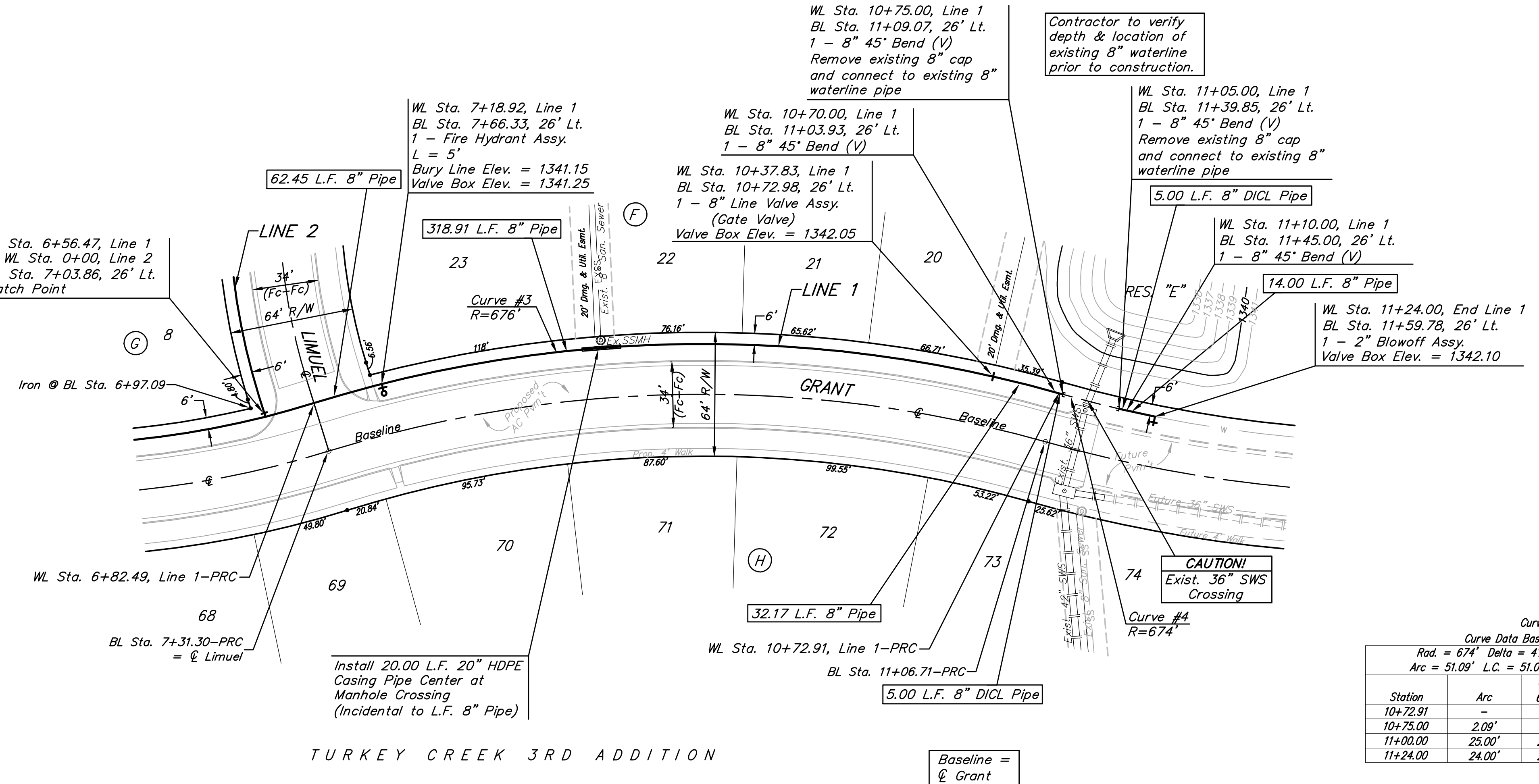


Curve #3
 Curve Data Based on Centerline
 Rad. = 676' Delta = 33°05'29" Tangent = 200.83'
 Arc = 390.42' L.C. = 385.02' Def./Ft. = 2.54275 Min.

Station	Arc	Chord 6' Left	Defl.	Total Defl.
6+82.49	-	-	0°00'00"	0°00'00"
7+00.00	17.51'	17.67'	0°44'31"	0°44'31"
7+25.00	25.00'	25.22'	1°03'35"	1°48'06"
7+50.00	25.00'	25.22'	1°03'34"	2°51'40"
7+75.00	25.00'	25.22'	1°03'34"	3°55'14"
8+00.00	25.00'	25.22'	1°03'34"	4°58'48"
8+25.00	25.00'	25.22'	1°03'34"	6°02'22"
8+50.00	25.00'	25.22'	1°03'34"	7°05'56"
8+75.00	25.00'	25.22'	1°03'34"	8°09'30"
9+00.00	25.00'	25.22'	1°03'34"	9°13'04"
9+25.00	25.00'	25.22'	1°03'35"	10°16'39"
9+50.00	25.00'	25.22'	1°03'34"	11°20'13"
9+75.00	25.00'	25.22'	1°03'34"	12°23'47"
10+00.00	25.00'	25.22'	1°03'34"	13°27'21"
10+25.00	25.00'	25.22'	1°03'34"	14°30'55"
10+50.00	25.00'	25.22'	1°03'34"	15°34'29"
10+72.91	22.91'	23.11'	0°58'15"	16°32'44"

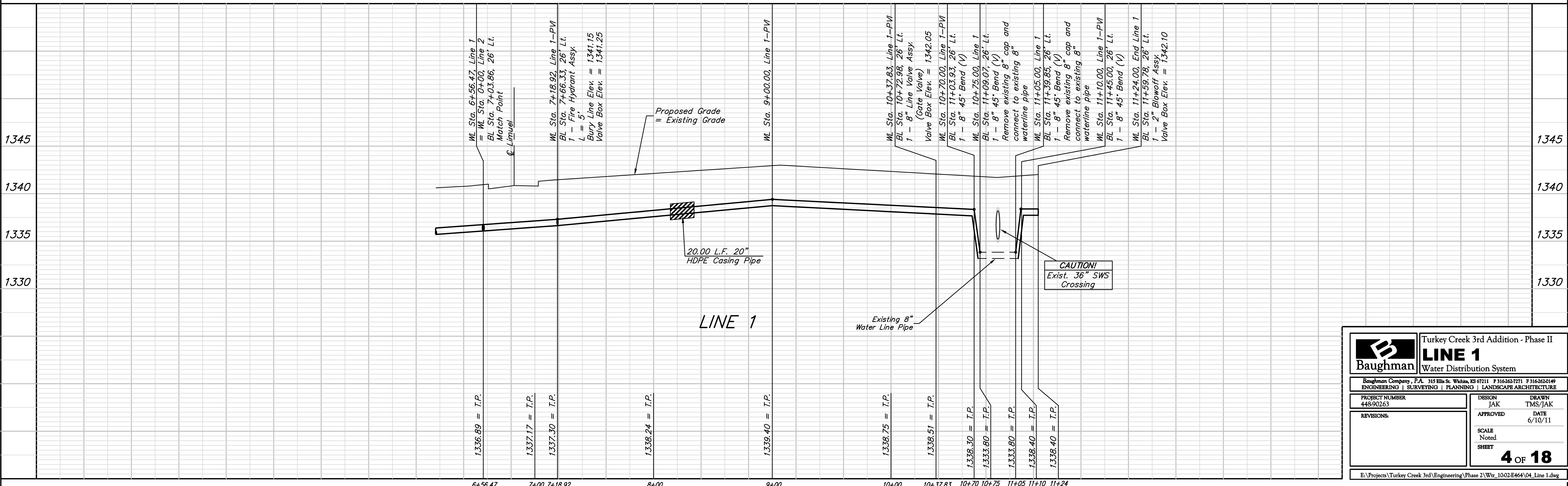
Curve #4
 Curve Data Based on Centerline
 Rad. = 674' Delta = 42°03'38" Tangent = 25.56'
 Arc = 51.09' L.C. = 51.09' Def./Ft. = 2.55073 Min.

Station	Arc	Chord 6' Left	Defl.	Total Defl.
10+72.91	-	-	0°00'00"	0°00'00"
10+75.00	2.09'	2.07'	0°05'20"	0°05'20"
11+00.00	25.00'	24.78'	1°03'46"	1°09'06"
11+24.00	24.00'	23.79'	1°01'13"	2°10'19"



TURKEY CREEK 3RD ADDITION

Baseline =
 Grant



B Baughman
 Turkey Creek 3rd Addition - Phase II
LINE 1
 Water Distribution System

Engineering | Surveying | Planning | Landscape Architecture

PROJECT NUMBER: 448-90263
 DESIGN: JAK
 DRAWN: TMS/JAK
 APPROVED: JAK
 DATE: 6/10/11

REVISIONS:

SCALE: Noted
 SHEET: 4 OF 18

E:\Projects\Turkey Creek 3rd\Engineering\Phase 2\Wtr_1002E464\04_Line 1.dwg