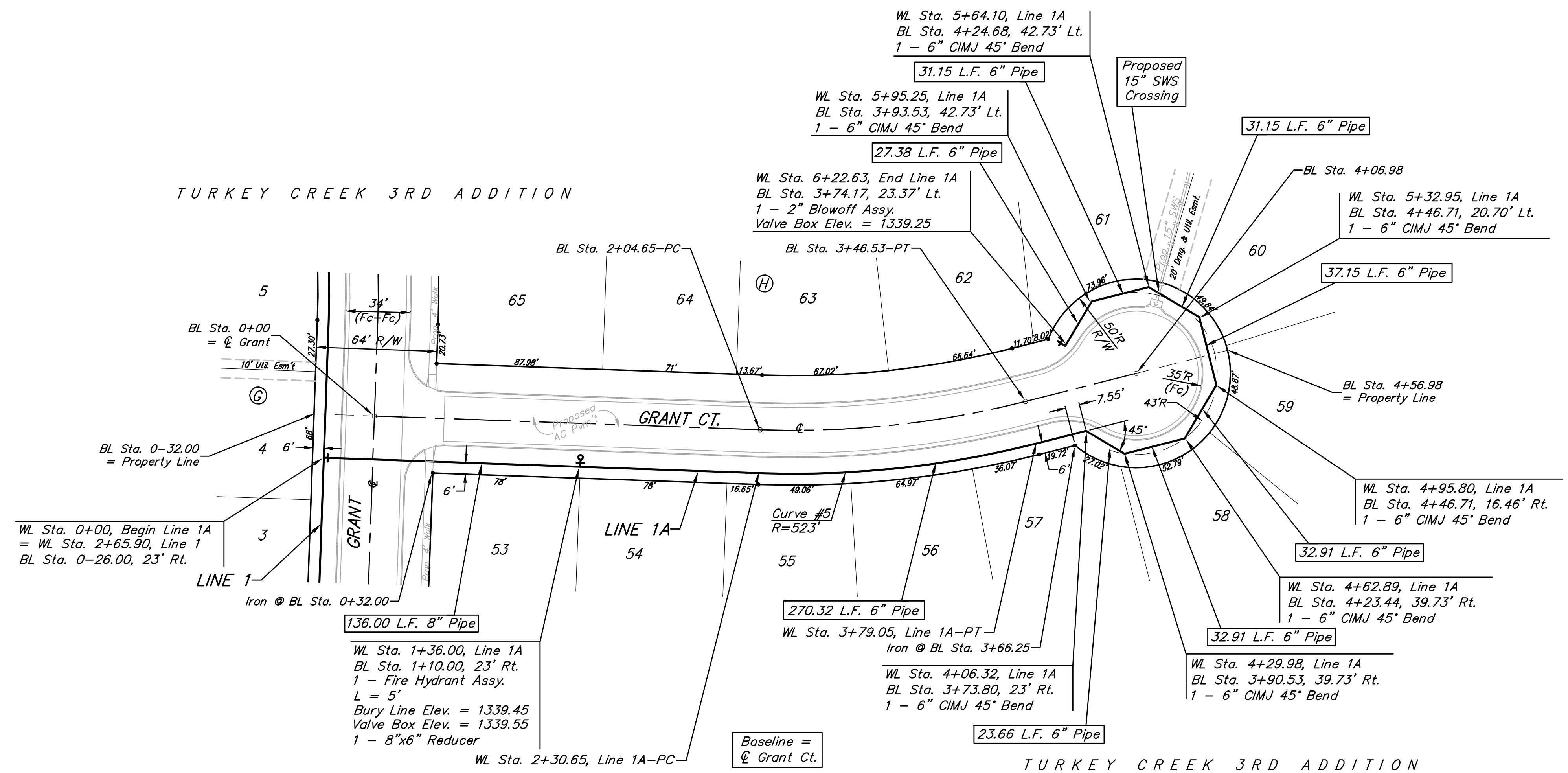
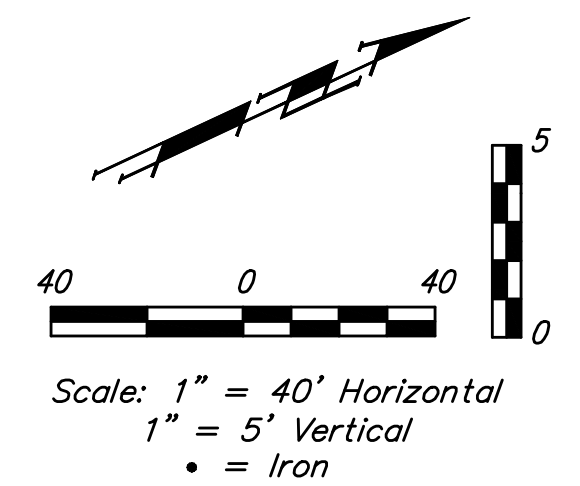


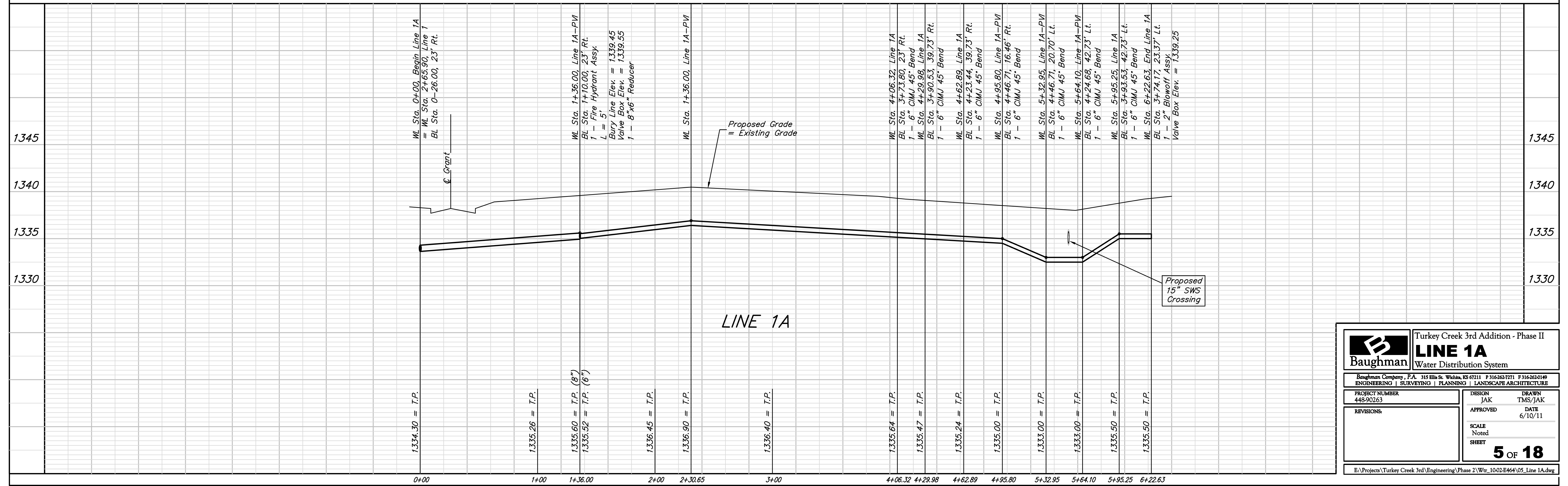
BENCHMARKS:
 BM #1: 135th St. W. & Pawnee
 City of Wichita Benchmark Disc,
 northeast corner of intersection
 on SW corner of concrete base
 of high line pole.
 Elev. = 1359.65 NGVD29

BM #2: City of Wichita
 Benchmark Disc, 0.4 Mi. South of
 Kellogg on 135th St. W., west
 side of concrete base for high
 line pole, west of K.C.&E.
 Substation, 135± south of
 railroad tracks on east side of
 135th St. W.
 Elev. = 1367.77 NGVD29



Curve #5
 Curve Data Based on Centerline
 Rad. = 523' Delta = 161°5'29" Tangent = 74.70'
 Arc = 148.40' L.C. = 147.91' Def./Ft. = 3.28667 Min.

Station	Arc	Chord 6' Right	Defl.	Total Defl.
2+30.65	-	-	0'00"00"	0'00"00"
2+50.00	19.35'	19.57'	1'03"36"	1'03"36"
2+75.00	25.00'	25.29'	1'22"10"	2'25"46"
3+00.00	25.00'	25.29'	1'22"10"	3'47"56"
3+25.00	25.00'	25.29'	1'22"10"	5'10"06"
3+50.00	25.00'	25.29'	1'22"10"	6'32"16"
3+75.00	25.00'	25.29'	1'22"10"	7'54"26"
3+79.05	4.05'	4.10'	0'13"18"	8'07"44"



Turkey Creek 3rd Addition - Phase II

LINE 1A
Water Distribution System

Baughman Company, P.A. 315 Ellis St. Wichita, KS 67211 F 316-262-7771 F 316-262-0149
 ENGINEERING | SURVEYING | PLANNING | LANDSCAPE ARCHITECTURE

PROJECT NUMBER 448-90263	DESIGN JAK	DRAWN TMS/JAK
REVISIONS:	APPROVED	DATE 6/10/11
SCALE Noted		5 OF 18
SHEET		

E:\Projects\Turkey Creek 3rd\Engineering\Phase 2\Wtr_1002-E464\05_Line 1A.dwg