

BENCHMARKS:
 BM #1: 135th St. W. & Pawnee
 City of Wichita Benchmark Disc,
 northeast corner of intersection
 on SW corner of concrete base
 of high line pole.
 Elev. = 1359.65 NGVD29

BM #2: City of Wichita
 Benchmark Disc, 0.4 Mi. South of
 Kellogg on 135th St. W., west
 side of concrete base for high
 line pole, west of K.G.&E.
 Substation, 135± south of
 railroad tracks on east side of
 135th St. W.
 Elev. = 1367.77 NGVD29

WL Sta. 0+00, Begin Line 3
 BL Sta. 1+29.33, 26' Lt.
 Remove Existing 2" Blowoff
 Valve and Extend 8" Water
 Line Pipe Northeast.
 Contractor to Verify Depth &
 Location of Existing 8" Water
 Line Prior to Construction.

Curve #7
 Curve Data Based on Centerline of Pipe
 Rad. = 974' Delta = 22°18'54" Tangent = 192.11'
 Arc = 379.34' L.C. = 376.95' Def./ft. = 1.76478Min.

Station	Arc	Chord	6' Left	Defl.	Total Defl.
0+00.00	-	-	-	0°00'00"	0°00'00"
0+25.00	25.00'	24.85'	0°44'07"	0°44'07"	0°44'07"
0+50.00	25.00'	24.85'	0°44'07"	1°28'14"	1°28'14"
0+75.00	25.00'	24.85'	0°44'07"	2°12'21"	2°12'21"
1+00.00	25.00'	24.85'	0°44'08"	2°56'29"	2°56'29"
1+25.00	25.00'	24.85'	0°44'07"	3°40'36"	3°40'36"
1+50.00	25.00'	24.85'	0°44'07"	4°24'43"	4°24'43"
1+75.00	25.00'	24.85'	0°44'07"	5°08'50"	5°08'50"
2+00.00	25.00'	24.85'	0°44'07"	5°52'57"	5°52'57"
2+25.00	25.00'	24.85'	0°44'07"	6°37'04"	6°37'04"
2+50.00	25.00'	24.85'	0°44'08"	7°21'12"	7°21'12"
2+75.00	25.00'	24.85'	0°44'07"	8°05'19"	8°05'19"
3+00.00	25.00'	24.85'	0°44'07"	8°49'26"	8°49'26"
3+25.00	25.00'	24.85'	0°44'07"	9°33'33"	9°33'33"
3+50.00	25.00'	24.85'	0°44'07"	10'17'40"	10'17'40"
3+75.00	25.00'	24.85'	0°44'07"	11'01'47"	11'01'47"
3+79.34	4.34'	4.31'	0°07'40"	11'09'27"	11'09'27"

Contractor to verify
 depth & location of
 existing 8" waterline
 prior to construction.

WL Sta. 6+56.74, Line 3
 BL Sta. 7+96.20, 26' Lt.
 1 - 8" 45° Bend (V)
 Remove existing 8" cap
 and connect to existing
 8" waterline pipe

WL Sta. 9+46.36, End Line 3
 BL Sta. 11+34.05, 26' Rt.
 1 - 2" Blowoff Assy.
 Valve Box Elev. = 1333.60

WL Sta. 6+52.15, Line 3
 BL Sta. 7+91.60, 26' Lt.
 1 - 8" 45° Bend (V)

For Radii Under 200'
 Contractor to Use
 Short Pipe Lengths

WL Sta. 6+38.74, Line 3
 BL Sta. 7+78.20, 26' Lt.
 1 - Fire Hydrant Assy.
 L = 5'
 Bury Line Elev. = 1331.05
 Valve Box Elev. = 1331.15

CAUTION!
 8" San. Sewer
 Crossing

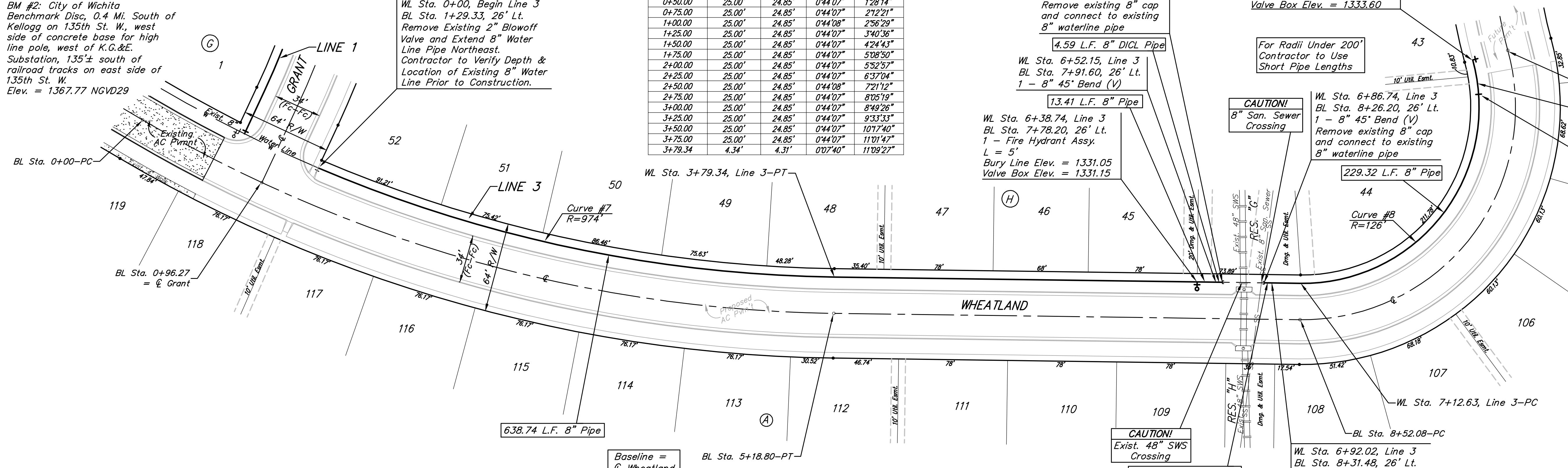
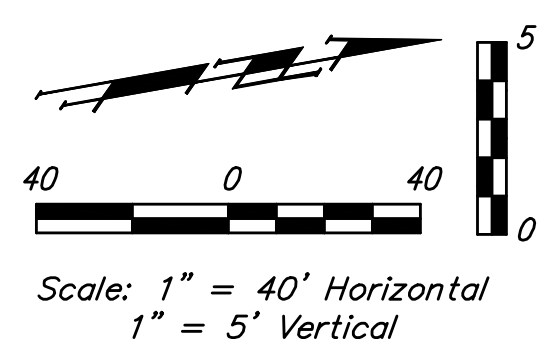
WL Sta. 6+86.74, Line 3
 BL Sta. 8+26.20, 26' Lt.
 1 - 8" 45° Bend (V)
 Remove existing 8" cap
 and connect to existing
 8" waterline pipe

25.00 L.F. 8" Pipe

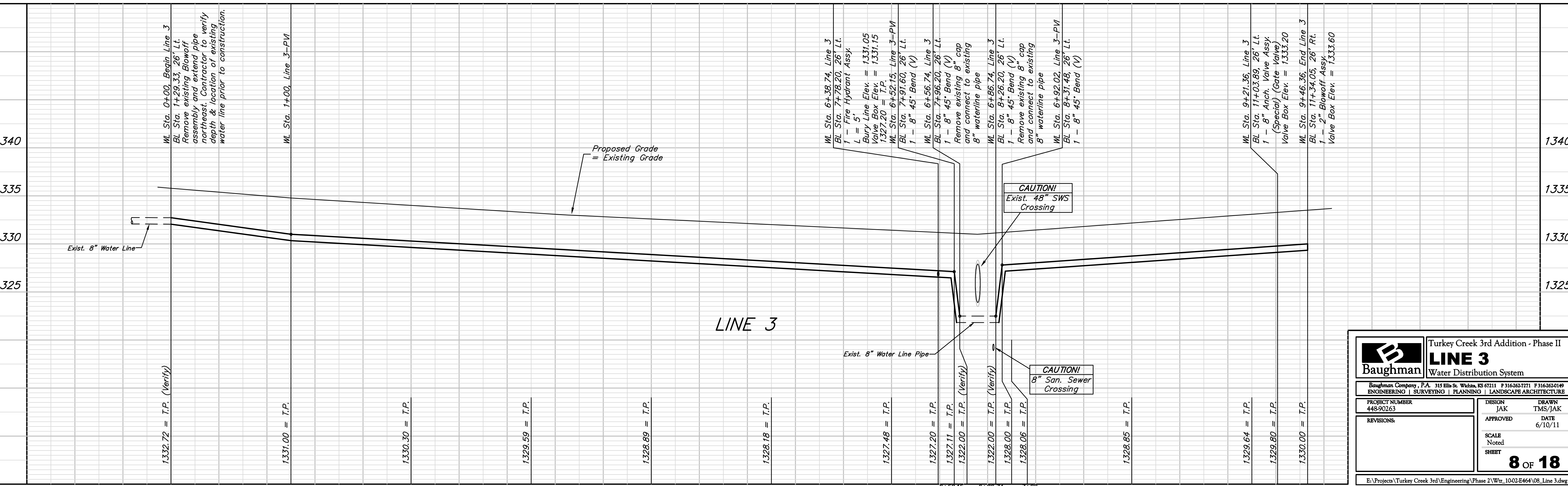
WL Sta. 9+21.36, Line 3
 BL Sta. 11+03.89, 26' Lt.
 1 - 8" Anch. Valve Assy.
 (Special) (Gate Valve)
 Valve Box Elev. = 1333.20

Curve #8
 Curve Data Based on Centerline of Pipe
 Rad. = 126' Delta = 101°07'03" Tangent = 153.17'
 Arc = 222.36' L.C. = 194.61' Def./ft. = 13.64240Min.

Station	Arc	Chord	6' Left	Defl.	Total Defl.
7+12.63	-	-	-	0°00'00"	0°00'00"
7+25.00	12.37'	11.78'	2°48'45"	2°48'45"	2°48'45"
7+50.00	25.00'	23.77'	5°41'04"	8°29'49"	8°29'49"
7+75.00	25.00'	23.77'	5°41'04"	14°10'53"	14°10'53"
8+00.00	25.00'	23.77'	5°41'03"	19°51'56"	19°51'56"
8+25.00	25.00'	23.77'	5°41'04"	25°33'00"	25°33'00"
8+50.00	25.00'	23.77'	5°41'03"	31'14'03"	31'14'03"
8+75.00	25.00'	23.77'	5°41'04"	36°55'07"	36°55'07"
8+84.99	9.99'	9.51'	2°16'17"	39°11'24"	39°11'24"
9+00.00	15.01'	14.29'	3°24'47"	42°36'11"	42°36'11"
9+25.00	25.00'	23.77'	5°41'03"	48'17'14"	48'17'14"
9+34.99	9.99'	9.51'	2°16'16"	50°33'32"	50°33'32"



Baseline =
 Wheatland



Baughman Turkey Creek 3rd Addition - Phase II
LINE 3 Water Distribution System

Baughman Company, P.A. 315 Ellis St. Wichita, KS 67211 F 316-262-7271 F 316-262-0149
 ENGINEERING | SURVEYING | PLANNING | LANDSCAPE ARCHITECTURE

PROJECT NUMBER 448-90263	DESIGN JAK	DRAWN TMS/JAK
REVISIONS:	APPROVED	DATE 6/10/11
SCALE Noted		SHEET 8 OF 18

E:\Projects\Turkey Creek 3rd\Engineering\Phase 2\Wtr_1002-E464\08_Line 3.dwg