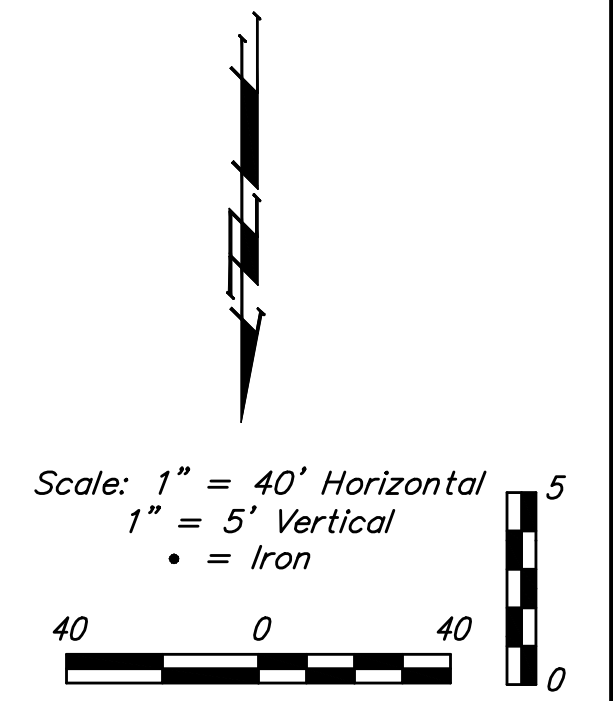
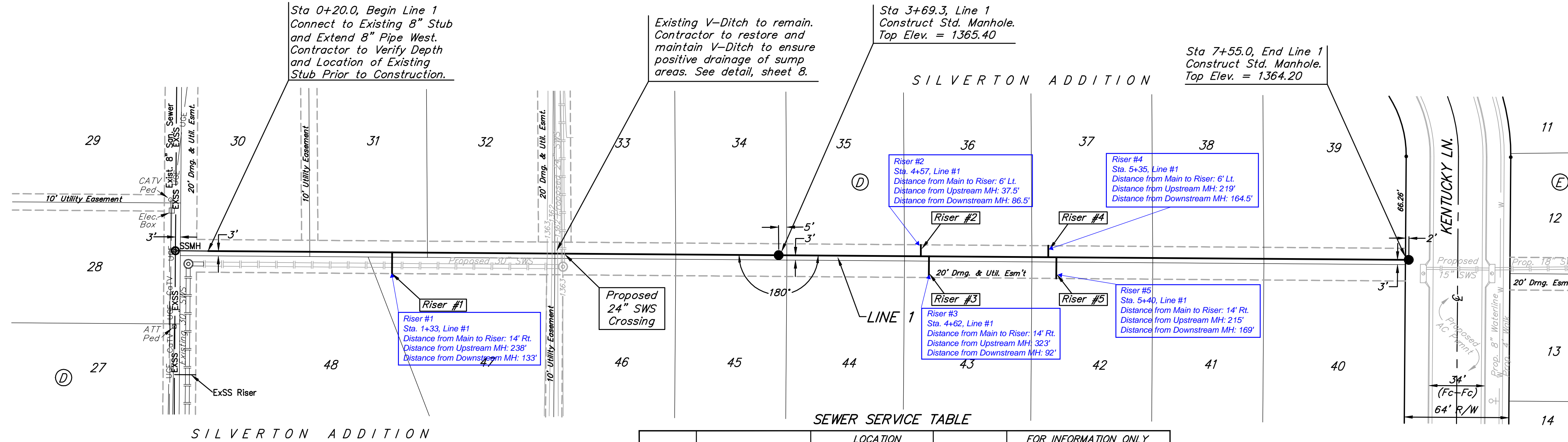


BENCHMARKS:
 135th St. W. & 13th St. N. - City of
 Wichita Disc at southwest corner of
 intersection, 30.00'± S. of C of 13th
 St. N. 35.00'± W. of C of 135th St. W.
 Elev. = 1355.65 MSL (NGVD 29)

"□" Cut in top of curb north side of
 Westport adjacent to the southeast
 corner of Lot 30, Block D, Silverton
 Addition.
 Elev. = 1364.44 MSL (NGVD 29)

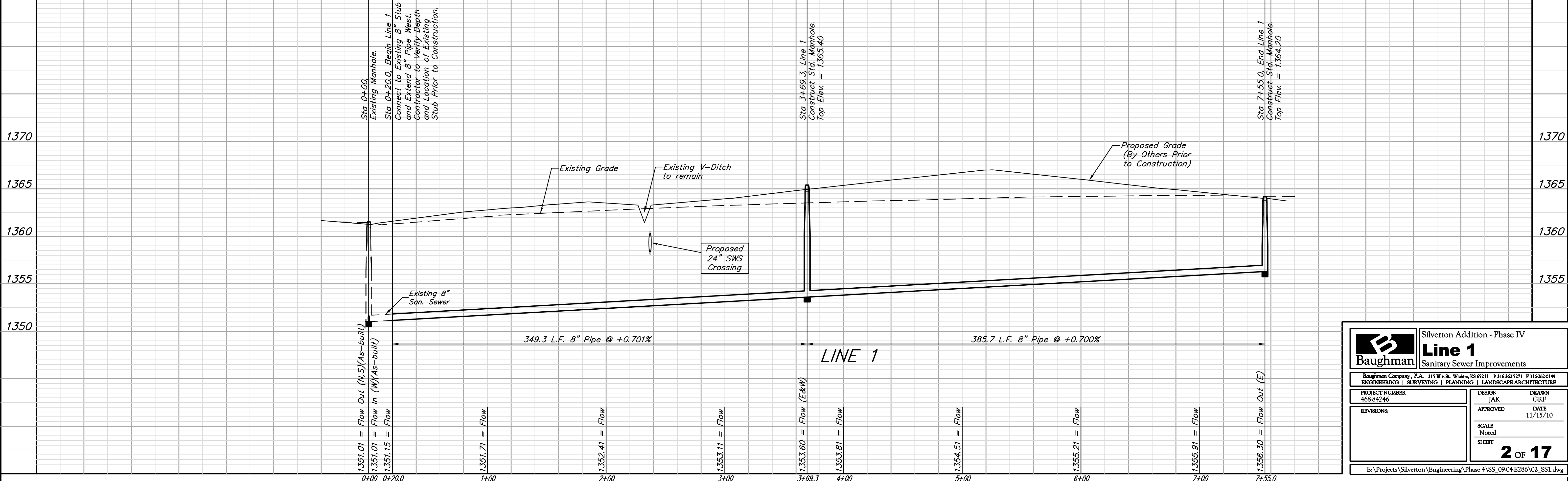
"□" Cut in curb inlet top at the west
 end of Bellick Ct. adjacent to Lot 10 &
 Lot 11, Block D, Silverton Addition.
 Elev. = 1364.12 MSL (NGVD 29)



SEWER SERVICE TABLE

NUMBER	TYPE	LOCATION				FOR INFORMATION ONLY	
		LOT NO.	BLOCK NO.	LINE NO.	STATION/DIRECTION	APPROXIMATE LENGTH 4" PIPE	
1	8" X 4" Tee	47	D	1	1+33/Rt.	7.0'	-13' 14'
2	8" X 4" Tee	36	D	1	4+57/Lt.	7.0'	-7' 14'
3	8" X 4" Tee	43	D	1	4+62/Rt.	7.0'	-13' 6'
4	8" X 4" Tee	37	D	1	5+35/Lt.	7.0'	-7' 6'
5	8" X 4" Tee	42	D	1	5+40/Rt.	7.0'	-13' 14'

NOTE: Vertical Riser Pipe shall be extended to 2' minimum above ground water elevation and 4' maximum below proposed ground elevation.



B Baughman		Silverton Addition - Phase IV Line 1 Sanitary Sewer Improvements	
<small>Baughman Company, P.A. 315 Ellis St. Wichita, KS 67211 P 316-262-7271 F 316-262-0149 ENGINEERING SURVEYING PLANNING LANDSCAPE ARCHITECTURE</small>			
PROJECT NUMBER 468-84246	DESIGN JAK	DRAWN GRF	
REVISIONS:	APPROVED	DATE 11/15/10	
	SCALE Noted	SHEET	2 OF 17
<small>E:\Projects\Silverton\Engineering\Phase 4\SS_09-04-E286\02_SS1.dwg</small>			