

BENCHMARKS:
 135th St. W. & 13th St. N. - City of Wichita Disc at southwest corner of intersection, 30.00± S. of ϕ of 13th St. N. 35.00± W. of ϕ of 135th St. W. Elev. = 1355.65 MSL (NGVD 29)

"□" Cut in top of curb north side of Westport adjacent to the southeast corner of Lot 30, Block D, Silverton Addition. Elev. = 1364.44 MSL (NGVD 29)

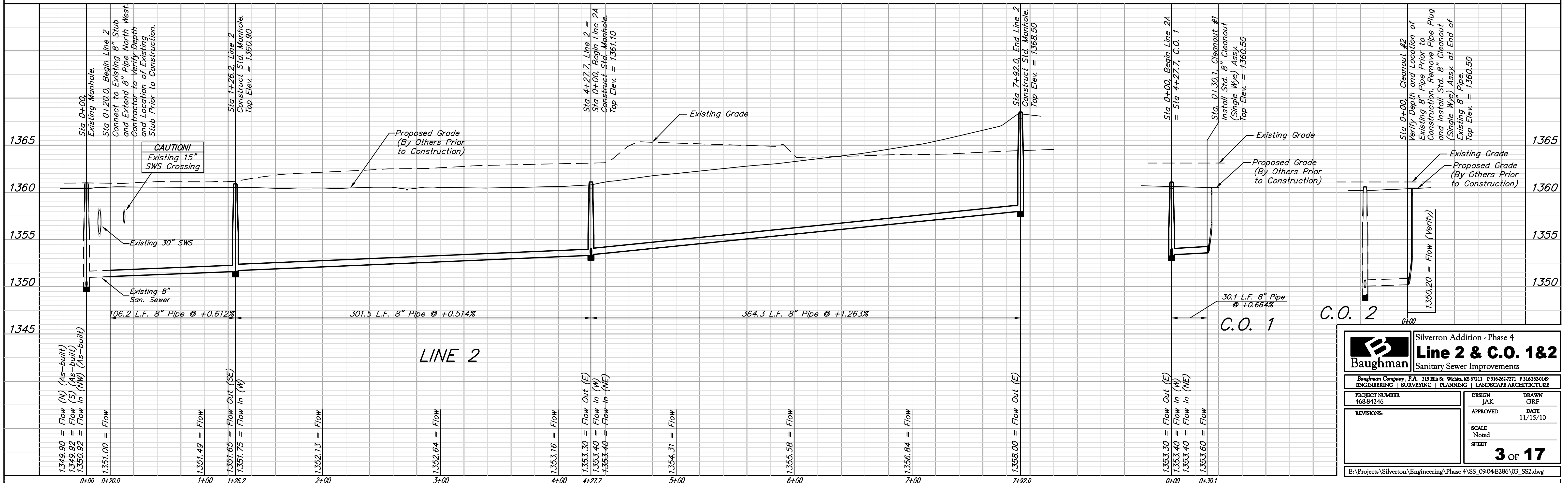
"□" Cut in curb inlet top at the west end of Bellick Ct. adjacent to Lot 10 & Lot 11, Block D, Silverton Addition. Elev. = 1364.12 MSL (NGVD 29)

EXISTING POND
 STATIC POOL ELEVATION: 1358.0 MSL
 BOTTOM ELEVATION: 1348.0 MSL
 100 YEAR DESIGN WATER SURFACE: 1359.6 MSL

NOTE:
 8" cleanout assy. shall be bid per each. 8" pipe from manhole to cleanout riser shall be bid as L.F. 8" pipe. Each 4" service line shall extend 8' from the 8"x4" wye fitting. This shall be incidental to the 8" cleanout.

Sta 0+00, Cleanout #2
 Verify Depth and Location of Existing 8" Pipe Prior to Construction. Remove Pipe Plug and Install Std. 8" Cleanout (Single Wye) Assy. at End of Existing 8" Pipe.
 Top Elev. = 1360.50

EXISTING POND
 STATIC POOL ELEVATION: 1358.0 MSL
 BOTTOM ELEVATION: 1348.0 MSL
 100 YEAR DESIGN WATER SURFACE: 1359.6 MSL



		Silverton Addition - Phase 4	
		Line 2 & C.O. 1&2	
Sanitary Sewer Improvements		Baughman Company, P.A. 315 Ellis St. Wichita, KS 67211 F 316-262-7271 F 316-262-0149 ENGINEERING SURVEYING PLANNING LANDSCAPE ARCHITECTURE	
PROJECT NUMBER 468-84246	DESIGN JAK	DRAWN GRF	DATE 11/15/10
REVISIONS:	APPROVED	SCALE Noted	SHEET 3 OF 17

E:\Projects\Silverton\Engineering\Phase 4\SS_0904E286\03_SS2.dwg