

Storm Sewer Modification MAPLE SHADE ADDITION 2079PPS (607861)

GENERAL NOTES

1. Contractor will be required to provide a minimum advance notice of forty eight (48) hours to utility companies prior to starting any excavation as follows:

Kansas One-Call	687-2470
The Contractor must notify the following in case of an emergency:	
Cox Communications	260-7204
Kansas Gas Service	888-482-4950
Westar Electric	383-8600
AT&T	1-800-286-8313
City of Wichita Water Department	262-6000
City of Wichita Sewer Maintenance	262-6000

2. The Contractor shall give all property owners and/or tenants of developed property directly abutting the construction of this project a minimum of ten (10) days advance notice prior to start of construction.

3. The Contractor shall be responsible for preserving property irons. The Contractor will be required to re-establish any property irons which are damaged or destroyed by his construction operations. Such irons shall be re-established by a licensed land surveyor in accordance with state laws.

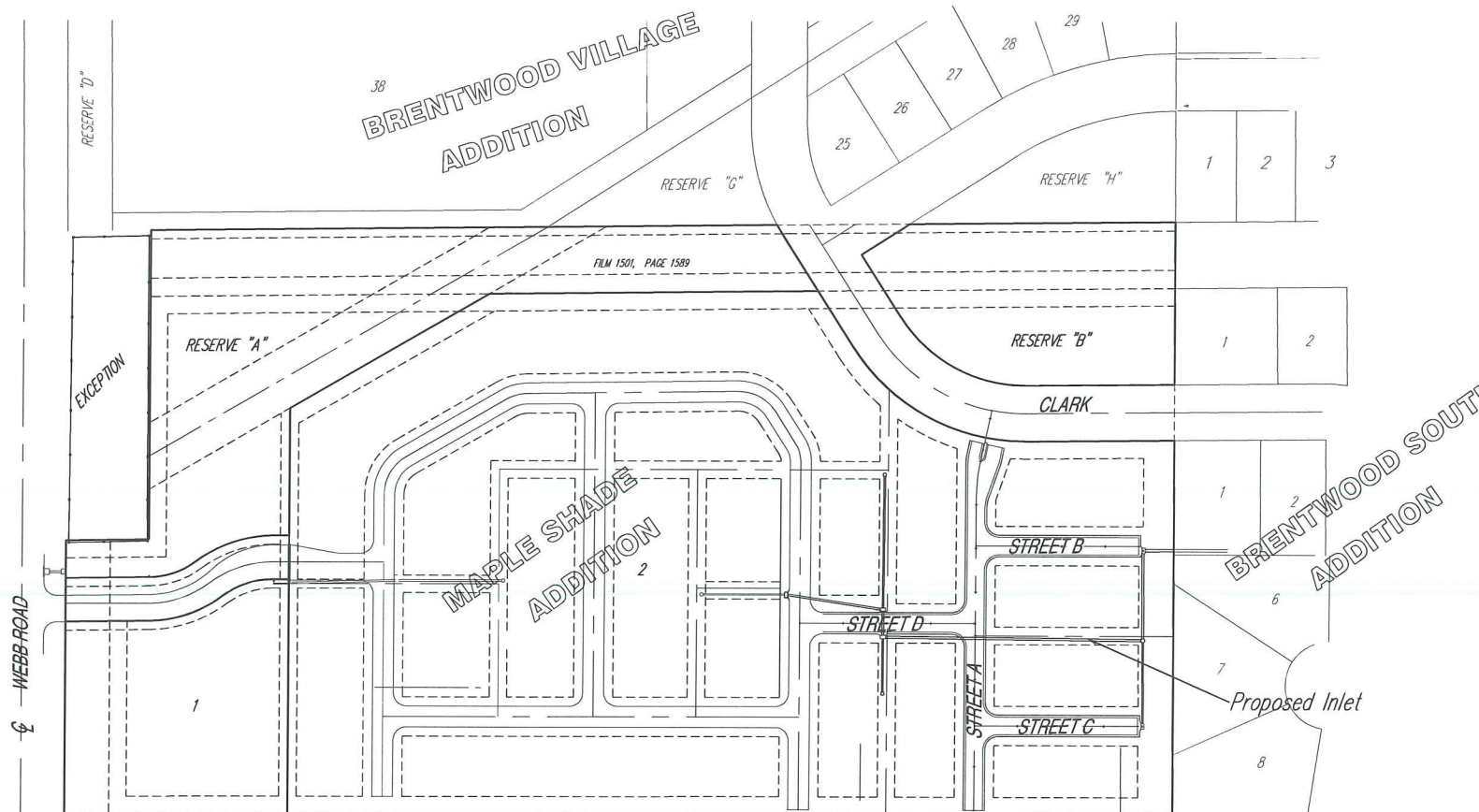
4. All storm sewer materials and construction to comply with City of Wichita standard specifications.

5. The Contractor shall seed, fertilize and mulch all disturbed areas per City specifications upon completion of construction.

BENCH MARKS

BENCH MARK #1: USGS BRASS PLUG 28' S. & 530' W. OF CENTERLINE INTERSECTION OF CAPRI & PAWNEE
ELEV.=1386.25 NGVD

BENCH MARK #2: CITY OF WICHITA STD. DISC
20.8' W & 54.5' S. OF CENTERLINE INTERSECTION
DALTON & PAWNEE
ELEV.=1379.60



INDEX OF SHEETS

1. Title Sheet
2. Plan/Profile Sheets

**APPROVED AS NOTED
BY CITY ENGINEER OF WICHITA**

Sanitary Sewers _____

Storm Sewers Julian Kellman 11-2-10

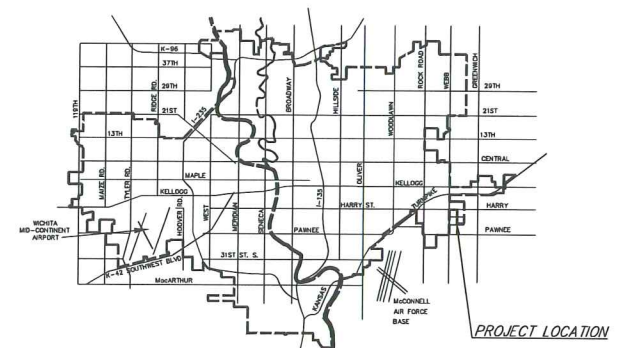
Driveway Approaches _____

Water Mains _____

Paving _____

NOTE TO CONTRACTORS

Inspection and testing for this project are to be provided by a Licensed Consulting Engineering Firm under contract with the Owner/Developer. Said inspection to be in accordance with the City of Wichita standard construction engineering practices and certified by a Licensed Professional Engineer. No work shall be performed in dedicated easements or public right-of-way by the Contractor without such inspection, nor shall any work be commenced without written authorization by the City Engineer.



VICINITY MAP

"AS-BUILT"
Contractor: Clint Miller Homes
Inspector: Kenneth W. Lee
July 21, 2011

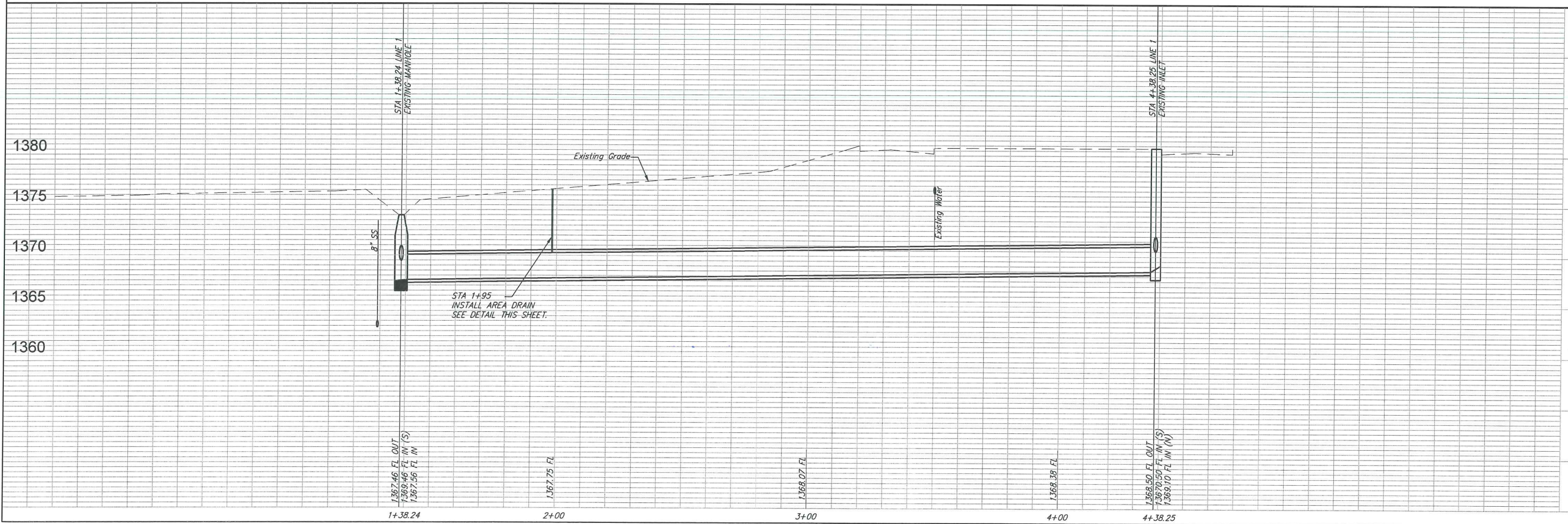
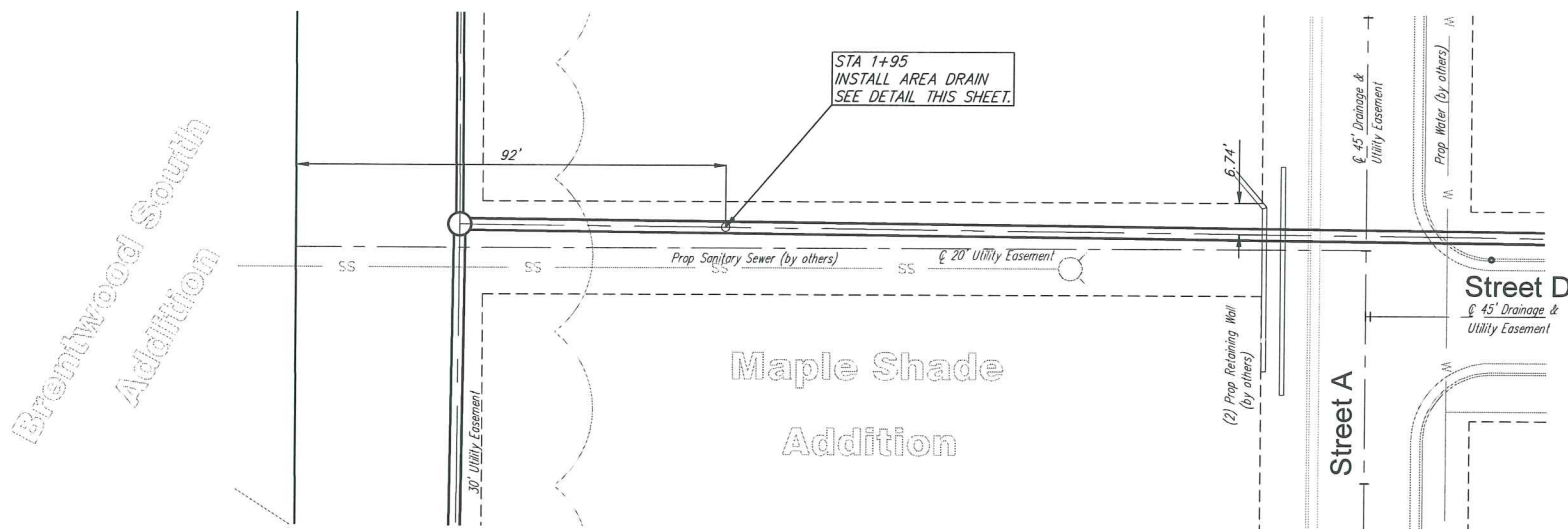
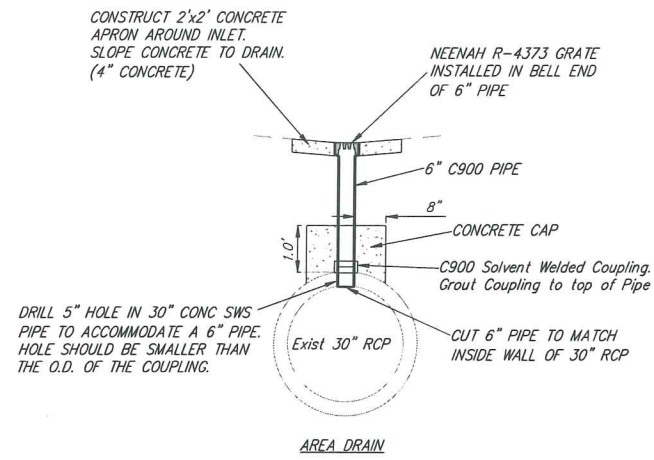


Scale: 1" = 100'

**CITY OF WICHITA, KANSAS
JAMES ARMOUR, P.E. - CITY ENGINEER**



Ruggles & Bohm, P.A.
Engineering, Surveying, Land Planning
924 North Main (316) 264-8008
Wichita, Kansas 67203 (316) 264-4621 fax
www.rbkansas.com E-mail: info@rbkansas.com



PROJECT NUMBER	PPS	DESIGN	OMB	REVISION	
DRAWING FILE	Storm Water Sewer	UTILITY	DATE	NOV 1, 2010	REVIEW
Maple Shade Addition Special Yard Drain WICHITA, KANSAS					
RB JOB	1934E				
SHEET	2				

Ruggles & Bohm, P.A.
Engineering, Surveying, Land Planning
184 North Lincoln Street
Wichita, Kansas 67203
www.rugbo.com
Email: info@rugbo.com