

STORM WATER DRAIN 377 TO SERVE Lots 1-5, Block 1 REEDS COVE MEDICAL CAMPUS

PROJECT NO. 468-84765
O.C.A. NO. 751503

GENERAL NOTES

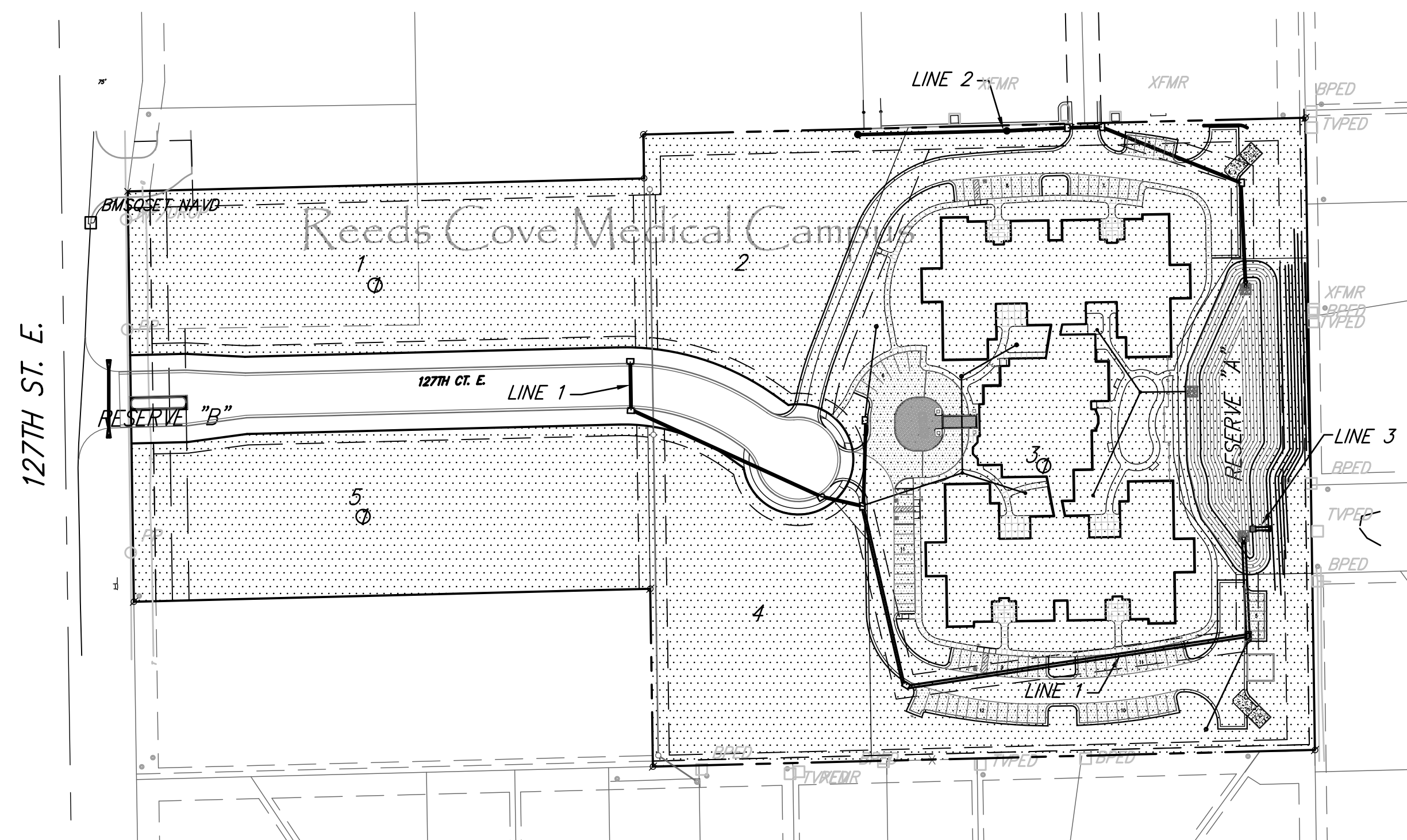
- Contractor will be required to provide a minimum advance notice of seventy-two (72) hours to utility companies prior to starting any excavation as follows:

Kansas One-Call 687-2470

The Contractor must notify the following in case of an emergency:

| | |
|-----------------------------------|----------------|
| Cox Communications | 260-7204 |
| Kansas Gas Service | 888-482-4950 |
| Westar | 383-8600 |
| AT&T | 1-800-286-8313 |
| City of Wichita Water Department | 262-6000 |
| City of Wichita Sewer Maintenance | 262-6000 |

- Underground utility service lines and overhead utility pole lines are to be adjusted as necessary by others prior to construction unless the plans specifically call for their adjustment by the Contractor or unless the plans specifically identify a utility to be adjusted by its owner during construction. Existing utilities and their location, as shown on the plans, represent the best information obtainable for design. Location information has been obtained from the various utility companies and is either from company record drawings or company-provided field locations. The Contractor will be required to work around existing utilities within the right-of-way which do not conflict with proposed construction.
- Rubble from the removal of miscellaneous structures and excess excavation which is to be wasted shall be disposed of on sites to be provided by the Contractor. These sites shall be approved by the Engineer as to suitability, appearance and site location. Locations that, in the opinion of the Engineer, will leave an unsightly appearance will not be approved.
- All disposal sites must be approved by the Kansas Department of Health and Environment. Material either stockpiled or disposed of in a flood plain would require a Kansas State Board of Agriculture permit. Any material dumped in waters of the United States or wetlands is subject to U.S. Corps permitting regulations. Any material buried or stockpiled beyond approved of Engineers construction limits would require additional archeological investigations unless buried in a previously approved borrow location.
- The Engineer shall take field ties to all quarter section corners. The Contractor shall set a City survey monument in the required location where such quarter section corners fall within the limits of pavement construction. Survey monuments will be furnished by the City. The Engineer will accurately locate and install the iron at the quarter section corner. This work will not be paid for directly, but shall be considered subsidiary to the other pay items of work in the contract.
- The Contractor shall give all property owners and/or tenants of developed property directly abutting the construction of this project a minimum of ten (10) days advance notice prior to start of construction.
- Any trash, rubble or other debris encountered at any time during the construction of this project shall be removed from the site. This work shall be incidental to the bid item for site clearing and restoration.
- A point file is available for the City of Wichita survey crew. Ruggles and Bohm will provide an upload of a staking file to City crews upon request.
- No work shall begin on this project until the Approved N.O.I. has been submitted to the City.

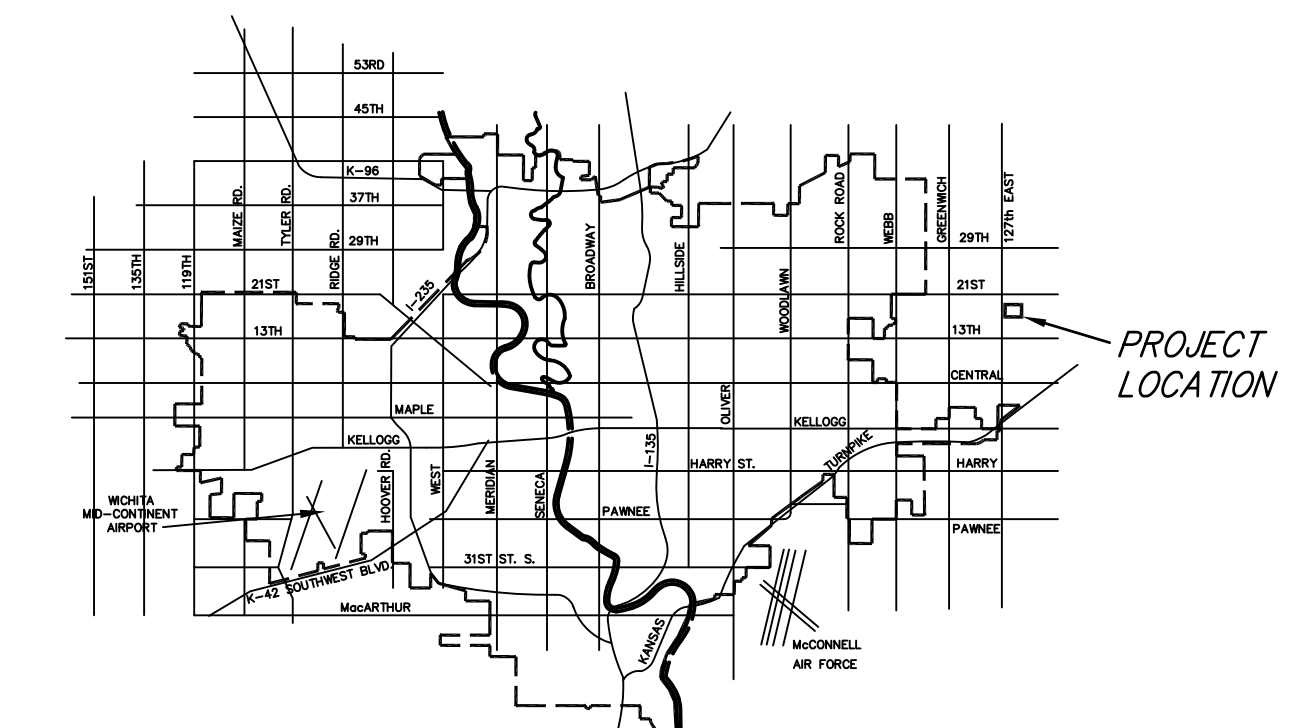


BENCH MARKS

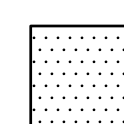
BENCH MARK #1: SQ. CUT TC concrete drive E side of 127th, 375' S & 25' E of NW Cor Sec 11, 27S, R2E Elev. 1381.07

INDEX OF SHEETS

- TITLE SHEET
3. SITE GRADING PLANS
4. STORM DRAIN PLAN/PROFILES
6. RETAINING WALL DETAILS
7. DROP INLET DETAILS
8. TYPE 1 INLET DETAILS
9. TYPE P MANHOLE WITH BEEHIVE TOP DETAILS
10. EROSION CONTROL PLAN
- 11-15. EROSION CONTROL BMP DETAILS
16. KEY MAP
17. FINAL PLAT REEDS COVE MEDICAL CAMPUS

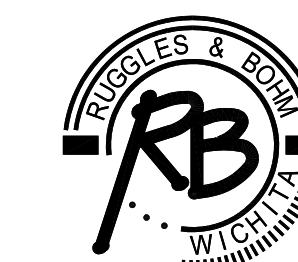


VICINITY MAP



IMPROVEMENT DISTRICT

CITY OF WICHITA, KANSAS
JAMES ARMOUR, P.E. - CITY ENGINEER



Ruggles & Bohm, P.A.
Engineering, Surveying, Land Planning
924 North Main (316) 264-8008
Wichita, Kansas 67203 (316) 264-4621 fax
www.rbkansas.com E-mail: info@rbkansas.com